

A GOOD TIP
For a Wholesome, Comfortable and Inexpensive Breakfast come to the Palm Room, 6th Floor. Open 8.30 a.m.

GOODS ADVERTISED ON THIS PAGE ARE ON SALE TODAY

THE ROBERT SIMPSON COMPANY LIMITED

STORE HOURS:
8.30 a.m. to 5.30 p.m.
During June, July and August, Store Closes at 1 p.m. Saturdays.

Gloves and Hose

Women's Silk Ankle Hose, 39c—Black and white, clear clean weave, deep lisle thread top, double garter welt, spiced heel, toe and sole. Sizes 8 1/2 to 10. Wednesday, 3 pairs, \$1.10; pair, 39c.

Women's Gloves, wrist length, cotton, two dome fasteners, strong sewn seams, close fine fabric, come in white only. Sizes 5 1/2 to 8. Wednesday, pair 39

Women's Long Silk Gloves, made in Canada, opened at wrist, dome fasteners, double tipped fingers, 12 and 16-button length; black and white. Sizes 5 1/2 to 8. Wednesday, \$1.00 and 75c.

Children's "Little Cutie" Socks, white and white with colored tops, turned cuff, extra fine quality; fit ages 4 months to 9 years. Wednesday, 15c and 20c.

Children's Stockings, mercerized, fine one-and-one ribbed lisle thread, seamless, nice weight, like real silk; white, black and colors. Sizes 4 to 8 1/2. Wednesday, pair 25

Women's Lisle Thread Gloves, 2 dome fasteners, strong sewn seams, neat stitching on back, Milanese weave, made in England, white only. Sizes 5 1/2 to 8. Wednesday 59

Women's Chamouette Fabric Gloves, made in France, white and white with heavy black stitched back, 2 dome fasteners. Sizes 5 1/2 to 8. Wednesday 1.00

The Men's Store is just now full of the best summer apparel for the young man. Smart, clean-cut styles that appeal to the man who is careful of his personal appearance. And serviceable clothes for boys and clothes that the older men like are here too.

Summer Satisfaction is assured in these new Tweed Suits. Very new is the new green mixed cloth. It is an English tweed, showing green and brown threads, in a swagger single-breasted soft roll saque suit, with patch pockets. Sizes 32 to 36. It comes at 13.50

A TWO-BUTTON MODEL.
In English tweed, blue with white hairline stripe. Sizes 32 to 36. Wednesday 15.00

YOUTH'S SUITS AT \$9.00.
Made from black and white tweed, check pattern, cut in smart young men's single-breasted, soft roll saque style. Sizes 32 to 36, at 9.00

The Pinch-Back Suits are favorites with the younger men. There is no surplus fulness anywhere about these suits to detract from their clean, summery appearance. But they are as comfortable to wear and to move in as they are smart to look at. They are single-breasted, with cuff trousers. A pinch-back suit in gray English tweed, pin check pattern. Sizes 33 to 36. Wednesday 10.50

Good Summer Shoes at Special Prices Today

SIX HUNDRED PAIRS OF MEN'S BOOTS, \$2.19.
Regular \$3.00 Men's Blucher Cut Boots, made of box kip and dongola kid leather, with standard screw soles; popular toe shapes and medium heels. Wednesday 2.19

BOYS' BEST BOOTS.
300 Pairs Boys' Goodyear Welt Boots, made of tan calf and dongola kid leather; both button and Blucher; neat recede toe; military heels. Sizes 3 1/2 to 5 1/2. Wednesday 2.69

WOMEN'S BOSTON-MADE LOW SHOES.
1,000 pairs, new styles and patterns for summer wear, shown in Colonial, pump and lace and button Oxfords, in kid, patent calf, gunmetal and colored kid leathers; Goodyear welt turn and flexible McKay soles; choice of several toe and heel shapes. Sizes 2 1/2 to 7. Regular \$4.00 and \$5.00. Wednesday 2.49

GIRLS' ROMAN SANDALS.
Made with six straps, white Sea Island duck, with fancy white buttons; white tailored bow; low heels. Sizes 8 to 10 1/2, \$1.45; sizes 11 to 2, \$1.65. Barefoot Sandals, in tan, black and white, from 49c to 1.45

Boys' Blue Serge Suits \$5.95
Single-breasted Norfolk Coat, full yoke, small knife pleats to stitched belt; patch pockets; full cut bloomers; fine English navy blue worsted serge. Sizes 25 to 31. Selling Wednesday 5.95

BOYS' SPORT SHIRTWAISTS, 75c.
Plain white, blue, khaki and stripe effects. Sizes 11 to 13. Wednesday 75

KHAKI BLOOMERS, 75c.
Medium weight khaki drill; washable; 7 to 16 years. Sizes 25 to 34 inches. Wednesday 75

Better Quality Drill. Sizes 25 to 33. Wednesday 1.00

Handy Stationery for Overseas Packages

Shipping Tags, 12 tags, printed for regimental number, rank, space for name, with full address, for the trenches. Package 5

Gummed Labels, 12 gummed labels, fully addressed in clear type, same as above. Package 5

Newspaper Wrappers, full size wrappers; printed same as above. Package of 60 for 20

Corrugated Boxes, in which to send gifts of clothing and stationery to your soldier friends; very light; splendidly made, and in five sizes. Each 50 to 100. 2.75

Metal Beds
Brass Bed, heavy ball corners, massive fillers, 2-inch posts and top rails; bright, polette or satin finishes; all standard sizes. Simpson's price 16.75

Brass Bed, satin, light or polette finishes, all standard sizes, extra heavy fillers. Simpson's price 22.75

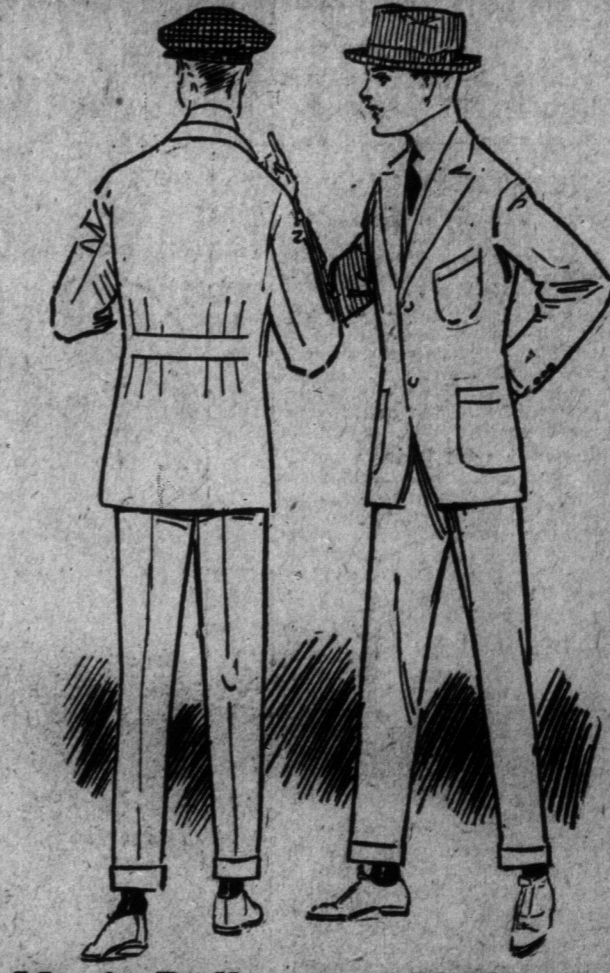
Brass Bed, 2-inch posts, double top rails, neatly designed mounts; satin, bright or polette finishes; standard sizes. Simpson's price 22.75

Bed Spring, heavy steel tube frame, strong woven steel coil wire springs, in all standard sizes. Simpson's price 3.25

Mattress, built in layers, deeply tufted, filled with all-cotton felt, roll stitched edges and covering of high-grade art ticking. Simpson's price 7.75

Box Spring, oil tempered springs, covered in fine canvas with a heavy layer of cotton felt on top; these are again covered in art ticking; all standard sizes. Simpson's price, pair 9.6

Pillows, selected feathers, covering of high-grade art ticking. Simpson's price, pair 2.95



Men's Balbriggan Underwear

Natural shade; short or long sleeves; drawers knee or ankle length; two-thread Egyptian yarns. Sizes 34 to 44. Regular 50c. Wednesday 35

69c AND 75c NEGLIGEE SHIRTS AT 59c.
Men's Shirts, hairline and cluster stripes; laundered cuffs; coat styles. Sizes 14 to 17. Special 59

Lawn and Garden Tools

GARBAGE CANS, CROQUET SETS SPECIALLY PRICED FOR WEDNESDAY.
Garbage Cans, ball handles, slip-over covers, galvanized, medium size, regular \$1.15, Wednesday 85c; large size, regular \$1.35, Wednesday 99c. Pearl Gray Janned, medium size, regular 90c, Wednesday 69c; large size, regular \$1.15, Wednesday 79c.

Croquet Sets, oiled and striped, 4-ball set, regular 98c, Wednesday 69c; 6-ball set, regular \$1.25, Wednesday 99c; 8-ball set, regular \$1.50, Wednesday \$1.19.

Multiple Corrugated Lawn Hose, is strictly high grade and fully warranted. Wednesday's price is about manufacturer's cost. Any length required from 25 feet upwards; complete with couplings and clamps, 1/2-inch size, Wednesday, per foot, 12c; 3/4-inch size, Wednesday, per foot, 14c.

Simpson's Ready Roofing, 108 square feet in a roll; complete with nails and cement. Specially priced for Wednesday at 1 ply, \$1.25; 2 ply, \$1.50; 3 ply, \$1.75.

Lawn Mower, the "Imperial," reliable Canadian-made mower, 9-inch wheel, 16-inch cut. Specially priced for Wednesday 4.69

Four-in-One Garden Tools, a combination of a trowel, rake, hoe and fork all in one handle; strong, convenient and serviceable. Regular 50c. Wednesday 39

Deluge Sprayers, for spraying plants, vines, trees, etc. Wednesday 37

Five-string Corn Brooms, a very good grade broom corn, well made, with enamel handle. Regular 40c. Wednesday 33

Today's List from the New Market

- TELEPHONE ADELAIDE 6100**
- MEATS.**
1,000 lbs. Round Steak, best quality, per lb. 25
2,000 lbs. Sirloin Steak, best quality, per lb. 25
Choice Mince Shoulder Steak, per lb. 15
Choice Sirloin of Prime Beef, per lb. 25
Mild Cured Smoked Ham, whole or half ham, per lb. 25
York Ham, Back Bacon, whole or half, per lb. 25
H.A. Pure Lard, 5-lb. pails, gross weight 40
H.A. Domestic Shortening, 5-lb. pails, gross weight 40
Cold Roast Beef, our own cooking, per lb. 45
Cold Roast Leg of Pork, our own cooking, per lb. 45
Jellied Lunch Tongue, per lb. 35
Jellied Ham, per lb. 35
Jellied Corned Beef, per lb. 35
- GROCERIES.**
4,000 packages Redpath's Granulated Sugar, in 5-lb. packages, 3 packages 1.21
Ogilvie's or Purdy Flour, Regular 10c, 3 lbs. 35
Low Stone Fresh Killed Oats, per stone 45
Finest Corn Meal, 5-lb. pails, 3 lbs. 35
Choice California Prunes, three lbs. each 35
Choice Pink Salmon, 1/2 lb. tin 35
Lipton's Pure Orange Marmalade, 4-lb. pail 50
- FRUIT AND VEGETABLES.**
Choice California Sun-dried Raisins, per doz. 35
Finest White Delaware Potatoes, per doz. 35
Finest Green Onions, 5 bunches 10
Fresh Mushrooms, large bunches, 5 bunches 10
Finest Parsnips, each 50
Dracons, for hanging baskets, 12 in. 35
Finest Fennel, 2 1/2 and 3 1/2 in. 35
Finest Parsley, 2 1/2 and 3 1/2 in. 35
Finest Parsley, 2 1/2 and 3 1/2 in. 35

White Sale Specials for Today

Wonderful value-giving in the June Sale of White Goods. The styles, qualities and varieties are particularly good.

\$1.75 Nainsook Gowns at \$1.19. Slip-over or Mother Hubbard style. Sizes 36, 38 and 40 inches.

\$1.75 Envelope Chemise for \$1.19. Made of nainsook, with deep yoke back and front. Sizes 34 to 44 bust.

75c Lace Trimmed Drawers for 50c. Made of nainsook; umbrellas, sizes 23, 25 and 27.

\$2.00 Undershirts for \$1.27. Good quality white nainsook, with flounce of Swiss embroidery. Sizes 36, 38, 40 and 42 inches.

\$1.00 Corset Covers for 79c. In nainsook, with round neck and yoke of sheer Swiss embroidery. Sizes 34 to 42 bust.

Women's 65c Kitchen Aprons for 39c. Checked gingham; all-over style; square neck and short set-in sleeves. Sizes to fit up to 42 bust.

\$3.00 Bathing Suits for \$1.95. Black mohair; several designs, with round, square or V-shaped neck. Sizes 34 to 42 bust.

Women's 85c Kitchen Aprons for 39c. Checked gingham; all-over style; square neck and short set-in sleeves. Sizes to fit up to 42 bust.

\$3.00 Bathing Suits for \$1.95. Black mohair; several designs, with round, square or V-shaped neck. Sizes 34 to 42 bust.

Paris and New York Styles in Silk Bags at \$1.59

Moiré silk, taffeta silk and corded silk, plain and with cut steel trimming in scroll, sunburst and floral designs; also plain centres, with gathered and gathered into dainty frames of old silver; small coin purse on chain; also mirror separate or attached to bag.

The Draw String Bags in plain silk and steel studded, all hand embroidered, silk lining, steel tassel or covered buttons. Our leader 1.59



Pretty Millinery on Sale Today

Light, Summery Dress Hats 6.50
A special purchase of Untrimmed Shapes 1.50
Clearing odd lines Sport Hats at 2.95

The Particulars Are as Follows:

Our workrooms have produced 200 Dress Hats, made from the best summery materials; a big variety of white Milan tagel hats, with white or colored facings; Wenchows, Italian Milans and hair braid combinations, in light shades, maize, Copenhagen, pink, white and old rose; the majority are large sailor styles, with either straight or roll brim. Wednesday 6.50

1,000 UNTRIMMED SHAPES AND READY-TO-WEAR HATS, WEDNESDAY, \$1.50.
Specially purchased for quick clearance; bought in the regular way we would have to sell them for \$2.75 to \$3.75. Wednesday 1.50

SPORT HATS CLEARING AT \$2.95.
All the odd lines of earlier hats, in tagel, silk and combinations. Were \$3.50 and \$5.00. Wednesday 2.95

Misses' New Model Summer Dresses \$13.50 and \$22.50

New models in high-class, lightweight dresses, for every summer time occasion. French voile dresses in plain white, striped, floral, plaid and novelty effects; with quaint collars and skirts flounced, ruffled, corded and tucked. White net dresses, combined with figured voiles.

NEW PALM BEACH AND LINEN SUITS.

A new shipment just received; several other distinctively new models in pink, blue, helio and white. Very special value. Wednesday 10.00

1,000 NEW TUB SKIRTS.

For all-round wear, lake, golf and sports wear; cotton gabardine, pique, rep, corduroy, stripes, straight line effects; flare models and full with shirred backs; adjustable belts; high-grade pearl buttons, and all the new pockets shown this season; some button down centre front. \$1.00, \$1.50, \$2.50, \$3.75, \$3.98, \$5.00 and upwards.

Wash Suits for Women WEDNESDAY, \$7.95 AND \$10.00.

At \$7.95—Several styles, including white rep, pique, cotton gabardine and beach cloth in linen shade. Coats are ripple or pleated and smart flaring skirt. Priced at 7.95

At \$10.00—Genuine American Palm Beach, made with flaring coat, trimmed with combination stripe collar, cuffs and belt, and flared skirt. Regular \$14.50. Special 10.00

WHITE MARQUETTE DRESSES, \$8.50.

Imported dresses, several styles in the newest American designs; exceptionally smart 8.50

COATS FOR GENERAL WEAR, \$12.50.

A number of our best selling lines, in the latest styles of the season. Gabardines, serges, whipcords, coverts and twills 12.50

WHITE CORDUROY SKIRTS, \$5.00.

Beautiful quality, medium width cord, full flare belt and pocket tabs. Sizes 24 to 28 band; 37 to 40 length. Special 5.00

Do You Remember Those Good Panamas You Saw in Our Window? They Are on Sale This Morning.

Men's Panama Hats at \$2.95

Frankly the most attractive lot of Men's Panamas and Bangkoks we have ever offered at the price. Panamas, in all shapes, including tourist, negligee, pencil brim, telescopes and Alpines. Were \$4.50 to \$10.00.

Bangkoks, in telescope, negligee and Alpine shapes. Were \$5.50 to \$8.00.

Positively only one hat to each customer. No phone or mail orders filled. Wednesday 2.95

Men's \$6 Watches at \$3.69

48 only. Men's Watches, in a 16-size thin model, fully tested and guaranteed for one year. Set with 15 jewels. The case is an Empress quality, gold plated case, open face, which will give first-class satisfaction. Regular \$6.00. Wednesday 3.69

Dessert Knives

Silver-plated blades, with a very fine quality of white handle knife or imitation ivory; your choice of round or square. Regular \$6.00 per dozen, Wednesday, dozen 3.99

Umbrellas

360 only. Men's Self-opening Umbrellas, covers of taffeta-finished cloth, fast color; good range of handles. Regular \$1.50. Wednesday 1.19

PARASOLS.

Good Sunbade for \$1.00—Fancy sunshades in floral or stripe designs, in a good range of the new shades, made on brass standard shape frame, long smart handles. Wednesday 1.00

Wall Papers With Decorative Values

Superb textile treatments for living rooms, walls, embossed, basket, wavy, overprinted with lines in contrasting colors, two-inch band border to match. Walls, single roll, 40c; Border, yard, 6c.

Tapstry Wall Papers, revealing all the clothy appearance of real tapestries, some with verdure designs, in old blue, tan, grays, browns and mixed colorings. Wednesday, single roll, 35c, 50c and \$1.00.

Stripes for bedrooms, gray, blue, yellow and rose. Dainty floral cut-out borders, some shadow print effects match these stripes. Walls, single roll, 22c; Cut-out borders, yard, 15c.

Chintz Wall Papers, some with black outlines; others small well covered designs with light shadowy treatment. Large selection of choice patterns and colorings. Wednesday, single roll, 35c and 50c.

Fancy Linens From China

A purchase of samples; warranted pure linen; woven by hand in China; richly embroidered and drawn by the clever Chinese needleworkers; doilies, centrepieces, tea and luncheon cloths, chiffonier runners, tray cloths, etc.; practically no USA pieces alike. Special selling space and salespeople. On sale, Linen Dept., Fourth Floor. Priced as follows:

Doilies, size 4-inch, each 10c; 6-inch, each 19c; 7-inch, each 25c; 8-inch, each 29c; 10-inch, each 39c; 12-inch, each 49c.

Centrepieces, size 20-inch, regular \$2.50, for \$1.48; size 27-inch, regular \$4.50, for \$2.95.

Scarves, size 13 x 68 inches, for \$3.95; size 19 x 60 inches, regular \$4.00, for \$2.95.

Tray Cloths, size 20 x 27 inches, regular \$1.50, for 98c; regular \$2.50, for \$1.95.

Luncheon Cloth, size 36 x 36 inches, regular \$4.50, for \$2.95; regular \$5.00, for \$3.48; size 48 x 46 inches, regular \$5.50, for \$3.95; size 40 x 40 inches, regular \$6.00, for \$4.48; size 54 x 54 inches, regular \$8.50, for \$5.95.

FOR ROYA
PROBS-
RUS
GER
40
UNITED
TROOP
INF
Mexicans Us
Then Op
Gu
FORTY TR
General Com
ista Forces
porte
WASHINGTON
FROM THE PLAN
SAY: A detach
ely clashed wit
Carriol, about
Paso, early tod
heavy casualties,
reports received
authorities in Ju
According to
Mexican authori
Americans were
fire in a surpris
casualties were
no heavy, but Ge
as being among
The American c
Kochman, return
line of commun
Later General
Mexican comman
a statement, in
ally that the
taken 17 Ameri
said that Gener
been confirmed,
rial reports as fo
ties on either si
General F
General Funst
that he had rec
tion of a clash
American troops
Kochman, Bente
war department
from General Ba
"There was a
Carriol, near V
(Continued)
BERLIN, ON
PICKS
Brock, Kitch
anac, Keov
Are
By a Staff Rep
BERLIN, Ont.
council at a sp
called for the
names to be sub
for them to ma
ter a selection
made from a th
bulletin make
Brock, Kitcher
Kochman, Bente
taken on these