

## Canadian cities join Intelpost

Intelpost, Canada's electronic and satellite mail link, was recently expanded across Canada.

Montreal, Ottawa, Halifax, Winnipeg, Calgary and Edmonton have officially joined the Intelpost link operating between Toronto, and cities in England, Europe and the United States.

A joint venture between Canada Post, CNCP Telecommunications and Teleglobe Canada, Intelpost is a high-speed facsimile service which allows Canadians to send clear copies of documents across Canada and overseas.

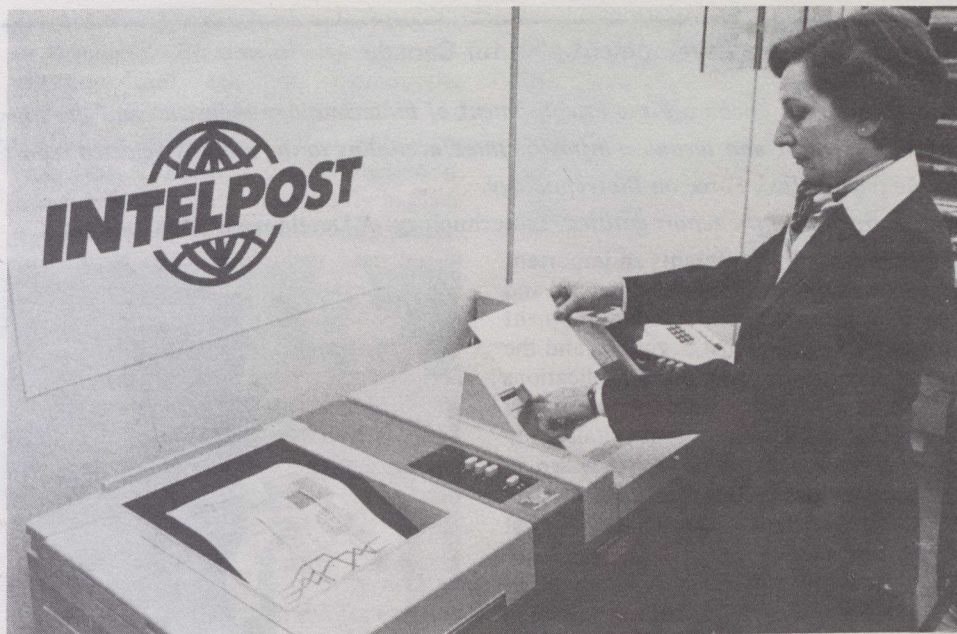
Located at main postal facilities, Intelpost uses CNCP's microwave network and Teleglobe Canada's international satellite facilities to transmit letters, charts and other documents in seconds.

Intelpost handles almost any communication that is printed, typed, handwritten, drawn or photocopied onto a sheet of paper no smaller than five inches by five inches (127 mm by 127 mm) and no larger than eight-and-a-half inches by 14 inches (216 mm by 356 mm).

Documents transmitted electronically by the new domestic Intelpost service are handled over the coast-to-coast microwave network of CNCP Telecommunications.

The 16,000-kilometre CNCP network relays a vast amount of Telex and other written messages, computer data, and voice and facsimile signals by means of microwave towers located every 50 or 60 kilometres from coast to coast.

To provide the domestic Intelpost ser-



*Intelpost centres are located in main postal facilities in Edmonton, Calgary, Winnipeg, Montreal, Ottawa, Toronto and Halifax.*

vice, CNCP has installed its Infocourier facsimile transmitting and receiving terminals in post offices in Halifax, Montreal, Ottawa, Toronto, Winnipeg, Edmonton, Calgary and Vancouver.

These units can transmit a page of 350 words in about 25 seconds — much faster than the office copiers which use telephones and telephone lines.

Messages sent by Intelpost cost \$4 a page in Canada and \$5 a page internationally and can be picked up in 30

minutes.

Introduced in June 1980, between London, England and Toronto, Intelpost was the first international electronic mail service of its kind. Washington, New York, Berne, Switzerland, and Amsterdam, the Netherlands, have since joined the system. The addition of Vancouver to the system has been delayed by a labour dispute in the British Columbia telephone system and will take place as soon as possible.

## Mitel to open plants in Britain and United States

Mitel Corporation of Ottawa will open two new plants within the next two years. The company will open a plant later this year in Newport, South Wales to be followed by a manufacturing plant in Burlington, Vermont next year.

Mitel already has two other British plants — in England and Ireland. Although details will not be announced until later, sources speculate that the new British plant could employ 3,000 employees by 1990.

The British facility — expected to be about 250,000 square feet — will be almost 20 times larger than the two earlier British plants.

It will produce most of the telephone switching equipment Mitel is building under a \$14-million contract with British Telecom.

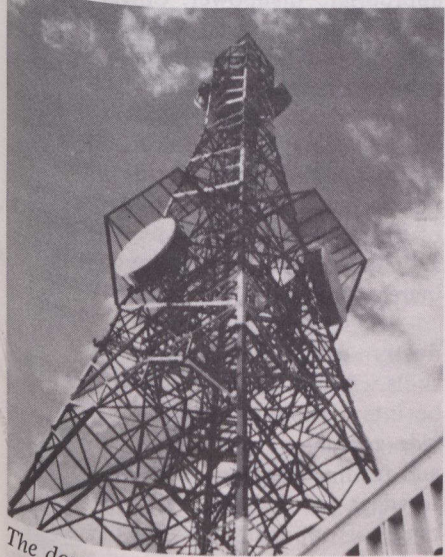
When it is fully operational, it will also be the major manufacturing centre for all Mitel telecommunications equipment sold in Europe.

Production was to begin this month in temporary facilities in Chepstow, about 30 miles from Newport, and will move to the new quarters when they are completed later this year.

The \$5-million U.S. plant will be the company's tenth world-wide and the second in the Vermont area.

It will carry out some of the final packaging and assembly of silicon chips used in Mitel's telephone switching.

The highly-successful firm, just eight years old, has facilities across Canada and the United States, in Denmark and Hong Kong, and will soon open an office in Japan.



*The domestic system uses a coast-to-coast network of microwave towers.*