

• THE • CANADIAN •
• ARCHITECT • AND •
• BUILDER •

Vol. XIV. - No. 12.

DECEMBER, 1901

PRICE 25 CENTS
\$3.00 PER YEAR

SAFFORD RADIATORS

WITH PATENT SCREWED JOINTS
For Steam or Hot water Heating
Are Specified by all the Leading Architects.

HYDRAULIC
ELECTRIC
STEAM
HAND-POWER
THE **ELEVATORS**
For Passenger or Freight Service, Designed to meet Every Requirement
LEITCH & TURNBULL CO., LIMITED.
HAMILTON, CANADA

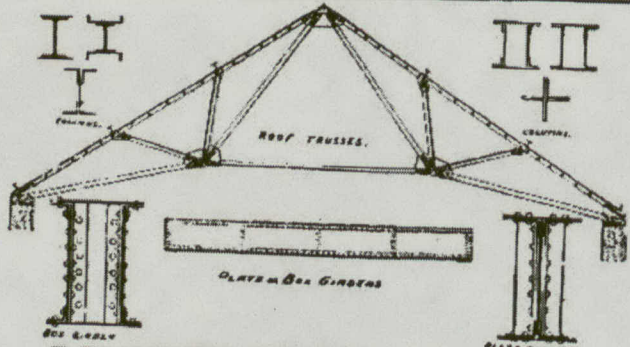
FENSOM'S

Electric
Hydraulic
Steam
Hand-Power

All made of the best material and
given workmanship.

ELEVATORS

Fensom Elevator Works:
52, 54, 56
Duke Street,
TORONTO,
ONT.



DOMINION BRIDGE CO. (LIMITED)

WE BUILD

Bridges of all designs in both Iron and Steel, Roofs, Telephone Poles, House Girders, and all kinds of Structural Iron Work.

OUR STOCK IN HAND COMPRISES

Steel Beams, Angles, Tees, Channels, Plates, Rolled Edged Flats, Bars, Rivets, Rounds, &c.; Iron Beams, Bars, Squares, Rounds, Turnbuckles, Rivets, &c.

Estimates furnished for Structural Iron Work delivered at building or erected.

GEORGE E. EVANS,
Ontario Agency: Room 38, Canada Life
Building, Toronto Telephone 284.

P. O. Address
DOMINION BRIDGE CO. Ltd., Montreal, P. O.
Works at Lac Beauport, P. Q.

For Information About

MAIL CHUTES

WHICH ARE

A Necessity in Office Buildings and Hotels,
Write to the sole makers

THE CUTLER MFG. CO., ROCHESTER, N. Y., U.S.A.
PATENTED AUTHORIZED

A. B. ORMSBY & CO.

SHEET METAL CONTRACTORS

Ceilings, Cornices,
Sky-Lights, Roofing, Etc.

126 QUEEN ST. E. TORONTO
Telephone 1123