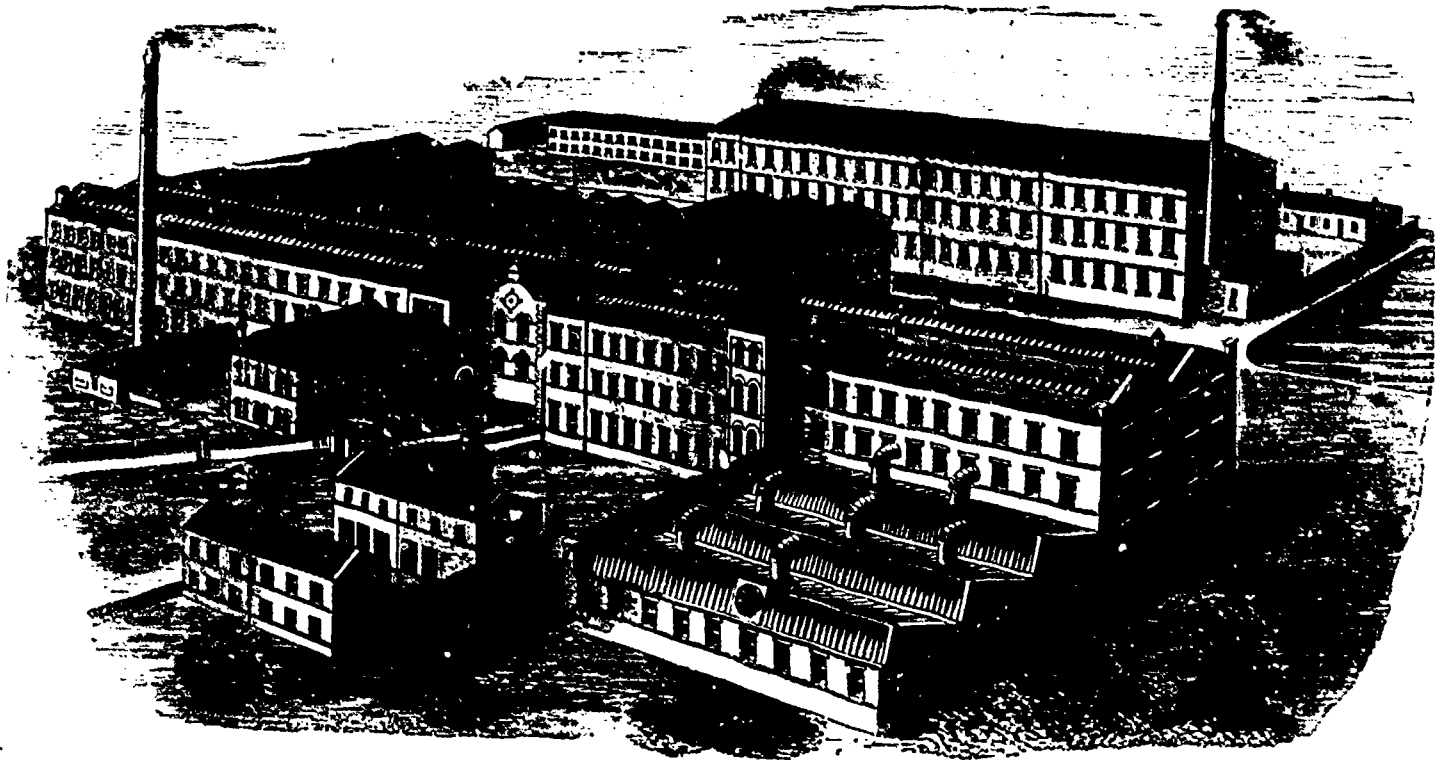


# CARD CLOTHING OF EVERY DESCRIPTION



## SAMUEL LAW & SONS, LIMITED

Established 1816

MOORLAND AND ROUND HILL MILLS

Incorporated 1888

CLECKHEATON, - ENGLAND

Largest Manufacturers in the World of

### CARD CLOTHING

—FOR CARDING—

Cotton, Wool, Worsted, Silk  
and other Fibrous Materials.

MAKERS OF

Plough-Ground, Side-Ground, Needle  
and Diamond-Pointed

### CARD CLOTHING

With HARDENED and TEMPERED Cast Steel Wire

PATENTEES AND MANUFACTURERS OF

Patent Rolled and Compressed Double Convex Wire, Angular, Flat,  
Round and Flat, and Ordinary Round Wire Cards.

Samples, Prices and Testimonials on application

Canadian Agent: GEORGE REID, 118 Duke Street, TORONTO