

Back to the Old BARGAIN DAY Idea Again, with a Bountiful Supply of New Spring Merchandise.

Men's Soft

FELT HATS.

These Hats are made in the very latest styles with wide silk band and neat boy at back. They are finished with double stitched rim and will always retain their shape. Colors: Green, Brown and Black. Regular \$2.20 each. Friday and Saturday and Saturday **\$1.95**



Friday and Saturday will witness a return to the old Bargain Sale Idea, that has been so successfully featured by this Store. Many new lines have been opened suggestive of the approach of Spring. These together with a large assortment of Staple Goods that are required all the year round, are offered at exceptionally low prices.

The interesting Bargain List given below is only a small part of what you can expect here Friday and Saturday.

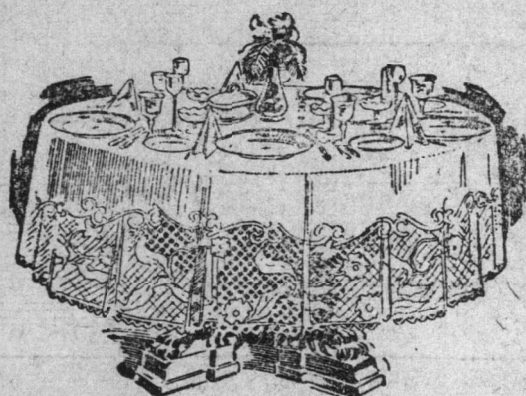
Sale of

Ladies' Waists



The very newest Spring models in White Embroidered Voiles, Soft Striped Cottons and Muslins. The new cape and sailor collars and the full lace trimmed lapel are leading features of these. You will be tempted to buy if you see them. Reg. \$1.75 and \$1.80 each. Friday and Saturday **\$1.40**

Fancy Linens, etc. Greatly Reduced.



WHITE TABLE DAMASK.
Snowy White Table Damask, in a fine close texture; neat floral designs, bordered to match; comes 50 inches wide. Reg. 45c. yard. Friday and Saturday **42c**

DAMASK TABLE NAPKINS.

Several different designs to choose from in blocked and flowered; the material used for these is much better than can be had to-day at a much higher price. Size 15 x 17 inches. Reg. 14c. each. Friday and Saturday **12c**

DUCHESSE SETS.

Made from fine English Cotton in sets of four pieces; they are neatly trimmed with rows of insertion and the edges are finished with lace to match; the large piece measures 11 x 40 inches. Reg. 45c. set. Friday and Saturday **39c**

LACE CURTAINS.

White and Cream Lace Curtains, 3 and 3½ yards long, strongly finished edges. Later Lace Curtains will be difficult to obtain—secure yours now, while the price is low. Reg. \$3.00 pair. Friday and Saturday **\$2.70**

TURKISH TOWELS.

Large size hand towels in fawn and cream striped Turkish with fringed edge; good heavy make; measures 21 x 40 inches. Reg. 35c. each. Friday and Saturday **30c**

FACE CLOTHS.

American face cloths, made from medium weight knitted cotton and finished with pink and blue silk overstretching at the edges; size 12 x 12 inches. Splendid values at this low price. Reg. 7c. each. Friday and Saturday **6c**

TOILET COVERS.

In Marcella, finished with looped cotton edges, and honeycomb with knotted fringe; they come size 26 x 38 and 23 x 42 inches, in neatly woven designs. Splendid values at this low price. Reg. 45c. each. Friday and Saturday **38c**

Splendid SHOWROOM Values EVERY ITEM A BARGAIN.

LADIES' SWEATERS.

Made in a popular heavy stitch, trimmed with darker shades at the front, collar and pockets in a close contrasting stitch; warm, comfortable, frost-resisting garments that for value cannot be equalled to-day. Reg. \$2.10 each. Friday and Saturday **\$1.75**

NECK and SLEEVE FRILLING.

Chiffon, net, lace, etc., in double and single makes, one and two inches wide; the colors are Paris, White, Cream and Black. Reg. 25c. yard. Friday and Saturday **20c**

RIBBONS.

In Taffetas, Merves, Corded and Fancy stripes, 5 and 6 inches wide, in shades of Cream, Pale Blue, Sage, Royal, Navy, Brown, Pink, Cardinal, Helio, Cerise, Pink, V. Rose, Black and White. Reg. 30c. yard. Friday and Saturday **25c**

TUCKED NET.

For blouses, sleeves, yokes of dresses, etc., made in assorted meshes; 18 inches wide, in Black, White and Paris. Reg. 50c. yard. Friday and Saturday **44c**

LADIES' COLLARS.

Fresh and crisp from the cases; a line of American Collars in lawns and muslins in the new fancy and plain sailor styles; some are trimmed with frilling and insertion, others beautifully embroidered with lace trimmed edge and some plain, finished with a wide hemstitched hem. Remarkable values; specially priced for Friday and Saturday each **16c**

LADIES' SKIRTS.

Black Serge and mid-Grey Tweeds, trimmed with belted waist and self-covered buttons; raised seams; perfectly fitting styles; length 36, 38 and 40 inches; waist measure 24, 25 and 26. Reg. \$3.75 each. Friday and Saturday **\$3.25**

LADIES' DRESSING JACKETS.

Of ripple finished Elderdown, in plain, loose fitting styles; a band of 2 inch trimming finishing the edge at the collar and continuing down the front both sides; the cuffs are also trimmed; the shades are Sage, Cream, Pale Blue, Red and Cerise. Reg. \$3.25 ea. Friday and Saturday **\$1.95**



LADIES' RAGLANS.

Various weights in fine smooth finished Covert Cloth; shades of Fawn, Brown, Grey and Green; belted and loose fitting styles; patch pockets; Raglan or set in sleeves; close fitting military or ordinary style collars. Reg. \$8.50 each. Friday and Saturday **\$7.00**

BIG SAVINGS ON SMALLWARES.

PURSES.—Black and Colored Leather Bag Purses; strong nickel-plated frame with ball fastening clips; three and four compartments; strong make; large size. Regular 25c. each. Friday and Saturday **20c**

NOTE PAPER.—"Cobalt" note paper in packages containing 100 sheets; letter size. Reg. 25c. pkg. Friday and Saturday **22c**

WRITING TABLETS.—"Progressive" writing tablets; size 5 x 8 inches; smooth finished ruled paper; blotter inside cover. Reg. 8c. ea. Friday and Saturday **7c**

OVAL PICTURES.—Can be used for post cards or photo frames. The frame is made of non-tarnishable "Imperial Silver"; close-fitting velvet back. Regular 45c. ea. Friday and Saturday **40c**

"SILVERETTE" PHOTO FRAMES.—Post card size, bright finish metal with metal back stand. Regular 17 cents each. Friday and Saturday **14c**

GILT WAIST SETS.—Soldierless make with hinged pins, in plain and fancy makes; 5 pieces to set. Regular 6 cents set. Friday and Saturday **5c**

Groceries.

Cherries in tins. Reg. 30c. for **27c**
Sliced Peaches. Reg. 25c. for **23c**
Currants in pkts. Reg. 20c. for **18c**
Peach Pulp. Reg. 65c. tin for **60c**
Apricot Pulp. Reg. 65c. tin for **60c**
Pineapple Pulp. Reg. 80c. for **75c**
National Rolled Oats, pkts. Reg. 35c. for **30c**
Jersey Cream Toilet Soap. Reg. 6c. for **4c**
Infants' Delight Toilet Soap. Reg. 10c. for **8c**
Prepared Mustard in tumbler. Reg. 10c. for **8c**
Coke's Shaving Sticks. Reg. 15c. for **12c**

BIG SAVINGS ON SMALLWARES.

CARTER'S WRITING FLUID.—An excellent ink for general use, writes Blue Black and changes to a permanent Black; large bottles. Reg. 9 cents each. Friday and Saturday **7c**

PETROLEUM JELLY.—A highly concentrated essence of petroleum, valuable for coughs, colds, sore throats, burns, wounds, sprains, etc. Reg. 6c. bottle. Friday and Saturday **5c**

HAIR PINS.—Holdfast and waved styles; assorted lengths in box. Reg. 4c. box. Friday and Saturday **3c**

ASBESTOS IRON HOLDERS.—Covered in fine colored Chintz and neatly bound at the edges with grey binding cotton; size 6 x 6 inches. Reg. 6c. each. Friday and Saturday **5c**

PINS.—Electro plated solid headed pins, in convenient loose leaf book form—any size of pin instantly. Regular 6c. book. Friday and Saturday **5c**

ALPHABET CARDS.—Collins improved cards lettered on both sides. Reg. 4c. each. Friday and Saturday **3c**

SPECIAL VALUES



PILLOW CASES.

Made from fine American Cotton, beautifully embroidered and finished at the edges with a full frill of self material; size 20 x 28. Reg. 30c. each. Friday and Saturday **24c**

CUSHION COVERS.

Fawn Linen, Crank and Repp, frilled, hemstitched and frilled edges, daintily embroidered centres, in many different designs and colorings; assorted sizes. Reg. 60c. each. Friday and Saturday **50c**

CUSHION COVERS.

Frilled and Hemstitched, Repp and Crank, with beautifully embroidered centres in various pretty shades; sizes 18 x 18 and 19 x 19 inches. Reg. 90c. each. Friday and Saturday **72c**

SKELETON DOOR MATS.

Good wearing qualities, made of plaited rope, size 15 x 24 inches. Reg. 85c. each. Friday and Saturday **75c**

INFANTS' BOOTS.

Black and Tan Vici Kid, with solid leather soles and spring heels; buttoned and laced styles; sizes 8 to 6. Reg. \$1.40 pr. Friday and Saturday **\$1.29**

CHILDREN'S SPATS.

Made from fine cloth in shades of Tan, Navy and Black, 11 to 13 inches long, sizes 6 to 10; solid leather strap and buckle fastening under the foot. Reg. 90c. pair. Friday and Saturday **48c**

WONDERFUL ECONOMIES IN THE GENTS' DEPT.

MEN'S BOOTS.

Black goat skin in Blucher style and Tan in Buttoned style, block toes; medium heels and soles. A splendid bargain at this low price. Regular \$3.90 values. Friday and Saturday **\$2.60**

MEN'S VICI KID BOOTS.

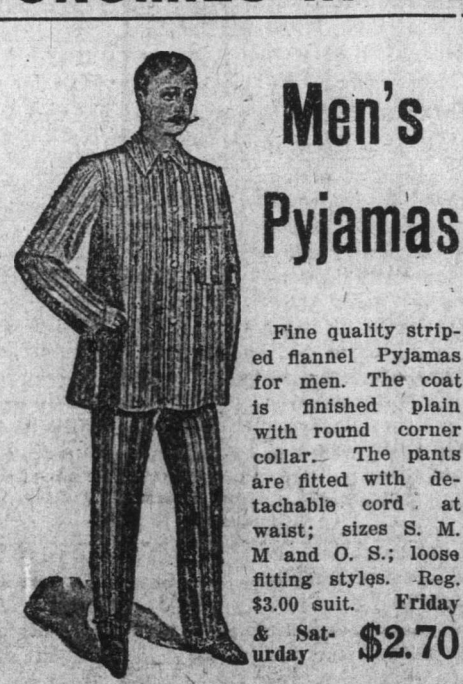
Stylish cut blucher shapes with medium heels and soles. A comfortable dressy boot that will give lasting satisfaction; sizes 6 to 10. Regular \$4.35 pair. Friday and Saturday **\$4.00**

YOUTHS' STORM BOOTS.

Tan storm calf boots, high cut blucher style, broad make with two full soles; fastened at the top with buckles and straps; sole leather counters and inner sole. Just the boot for hard usage. Regular \$4.55 to \$5.20 pair. Friday and Saturday **\$4.65**

MEN'S WORK SHIRTS.

Firm finish Khaki flannel supplies the material for these. They are double stitched throughout and finished with two breast pockets and collar attached. Reg. \$2.85 ea. Friday and Saturday **\$2.60**



Men's Pyjamas

Fine quality striped flannel Pyjamas for men. The coat is finished plain with round corner collar. The pants are fitted with detachable cord at waist; sizes S. M. M and O. S.; loose fitting styles. Reg. \$3.00 suit. Friday and Saturday **\$2.70**



MEN'S TUNIC SHIRTS.

Made from fancy striped cotton in plain shades of Pale Blue, Grey and Cream; pointed collars attached. A remarkable saving chance that you cannot afford to miss. Specially priced each **70c**

MEN'S SHIRTS.

Fine American Cotton in Blue, Helio and Black stripes on White grounds; sizes 14 to 17 collars; good roomy makes. Reg. \$1.70 ea. Friday and Saturday **\$1.50**

MEN'S TIES.

Wide flowing ends in plain, fancy striped, floral and spotted patterns; this is a special bargain that keen buyers should take advantage of. Reg. 35c. each; worth considerably more. Friday and Saturday **30c**

MEN'S WIDE END TIES.

A splendid assortment of light and dark shades; newest designs in stripes, scroll and spotted. Reg. 75c. each. Friday and Saturday **68c**

MEN'S WORSTED HALF HOSE.

Fancy Heather Mixtures and Black; assorted ribs; sizes 10, 10½ and 11 inch feet. Take advantage of this opportunity and lay in a supply of these now as the new hosiery will be much higher in price. Regular 40c. pair. Friday and Saturday **36c**

MEN'S UNDERWEAR.

Stanley's famous Unshrinkable make, offered at the time they are mostly needed. "This make of underwear is becoming more popular every day, because of its soft feel to the skin, combined with its hard wear resisting qualities. Reg. \$2.25 gar. Fr. and Sat. **\$2.00**

MEN'S & BOYS' NORFOLK JACKETS.

Made from all wool Mackinaw in assorted checks. These coats are made in the most up-to-date style and are well finished. The inside seams are bound with strong linen tape to prevent fraying. They come in Belted or Norfolk styles with large side pockets. Regular \$5.80 each. Friday and Saturday **\$5.40**

EXTRA VALUES



A variety of standard qualities for Friday and Saturday. There are Coating and Man-o-War Serges in Black and Navy, 50 inches wide; Myrtle and Brown Diagonal, 48 inches wide; Heather, Green and Fancy Mixed Tweeds, 50 inches wide; and Scarlet Cheviot Serge, 52 inches wide. Reg. \$1.50 yd. Friday and Saturday **\$1.38**

FINE AMERICAN WASH FABRICS.

In Percales, Cotton, Muslins, etc., striped, bud and floral designs; 1 yard wide; perfect goods for Shirts, Shirts, Pinafores, etc. They're pretty and attractive—well worthy of your inspection. Come and see them. Reg. values to 35c. yard. Friday and Saturday **22c**

50c. BUSTER BROWN BELTS for 10c.

Wide Patent Leather Belts in Black and Crimson, with strong nickel plated and self-colored buttons. Values to 50c. ea. Friday and Saturday **10c**

J. W. R. COTTON—Just what's required for machine or hand use; superior quality six cord Cotton. Reg. 6c. reel. Friday and Saturday **4c**

CIRCULAR CLOTHES BRUSHES.—Black and White Bristles fastened on twisted galvanized wire, making them washable. Black Enamelled handles. Reg. 13c. 15c. each. Friday and Saturday **13c**

Patriotic Hockey.

To help to swell the funds of the W.P.A., hockeyists who have long since been out of the game played seven of this year's champions at the Prince's Rink last evening. The opposing forces were: Victorias. Has-Reens Hunt. Vinnicombe Goal. Parsons Point. Marshall Cover. Hutchings Rover. Dickson Centre. W. Herder Right. James Left.

The attendance was large, though it could have been larger, considering the object. His Excellency the Governor and Lady Davidson attended by Capt. Riley, M.C., A.D.C., were present. The game, which was fast and interesting all through, was played under Canadian rules, in three 20 minute periods. The Victorias won by 6 goals to 2.

Though lack of practice was apparent, the has-beens at times displayed their old time vigour and their rushes were very effective. They were beaten by combination play.

There was also a ladies' match between the Reds and Whites, the latter winning by 3 goals to 0.

Messrs. J. Tobin and E. Jerrett acted as referees, and Mr. J. M. McKenzie timekeeper.

The C. C. C. band was present during the evening and rendered lively and patriotic airs.

Have your Suit or Overcoat Cleaned or Pressed for New Year. Phone or send to SPURRELL, 365 Water Street. Telephone 574.—dec28.eod.tf

Information for Seal Hunters.

Seal Hunters.

Yesterday afternoon the Marine Department received the following messages regarding ice and weather conditions North and in the Gulf:—

Tilt Cove—Moderate N. W. wind; weather clear and cold; a little water on this side; smart surf.

Nipper's Hr.—Moderate W. wind; weather fair; heavy ground sea on La Seie—Strong N. W. wind; weather clear and cold; sheet ice passing Cape. No seals.

Page—Wind N. W. blowing a good breeze; weather fine, frosty and clear. Greenspond—Strong N. W. wind; Bay full of ice.

Belle Isle—Strong N. W. wind; loose sheet slob ice about; no Arctic ice sighted yet.

Codroy—Wind S. moderate; ice closely packed.

Flower's Cove—Wind W. weather fair and cold; Straits blocked.

Catalina—Strong N. W. wind; fine clear weather; no ice in sight; heavy sea.

Twillingate—N. by E. wind, fresh; weather fine, clear and moderately cold; ice conditions unchanged; no seals.

Westleyville—Strong W. N. W. wind; heavy sea; ice breaking up.

Bonavista—Wind N. by W.; weather clear and cold; from the highest hill with a good glass there is no water to be seen E. and N. of the Cape, but in a N. W. direction from the Cape there is only 7 miles of ice; the shortest route to the main water is N. N. W. from Stone Island; the centre of the Bay is clear of ice, extending to Little Bernier.

Port aux Basques—Light N. W. wind, weather fine; no ice in sight.

Heath Pt. St. Paul's Island and Flat Pt.—Heavy close packed ice everywhere.

Cape Ray—Weather clear; wind N. W. heavy close packed ice distant.

Money Pt.—Wind N. W. weather clear; heavy close packed ice stationary.

Scatterie—Weather clear; strong E. wind; heavy close packed ice inshore.

Fairbanks Brass Globe and Angle Valves to be had at BOWRING BROS., Ltd., Hardware Dept.—feb6.tf

Foreign Fish Market

The Board of Trade has received the accompanying communication from Oporto:—

"The higher prices now being asked, which are considerably below what shippers are demanding, are seriously curtailing consumption last week is due to speculators clearing off parcels at lower prices which showed them a good profit. The rate of exchange is 31d."

STOMACH TROUBLES.—Stafford's Prescription "A" cures indigestion and dyspepsia. Price 25 and 50c. bottles. Postage 5 and 10c. extra. feb9.44

The Royal Stores Ltd.