

MUNICIPAL ENGINEERS, CONTRACTORS AND MATERIALS

WILLIS CHIPMAN

Hon. Grad. McGill University.
M. Can. Soc. C.E. M. Am. Soc. C.E.
Mem. Am. W.W. Ass'n.
**WATERWORKS, SEWERAGE WORKS, GAS
WORKS, ELECTRIC LIGHT AND
POWER PLANTS**
Reports, Surveys, Construction, Valuations
103 BAY STREET - TORONTO

R. E. SPEAKMAN, C.E.

A. M. Inst. C. E., 1878.
CONSULTING ENGINEER

Waterworks, Sewerage and Sewage Disposal.
Municipal Improvements.
Gravelly Pavements.
Electric Light Plants.
Drainage and Irrigation of Land.
Coal Handling Plant and Machinery.
Plans, Specifications and Estimates.
Construction and Valuations.

Canada Life Building - TORONTO

Roderick J. Parke

M. Am. Soc. C.E., A.M. Amer. Inst. E.E.
CONSULTING ENGINEER

Hydraulic Power Development Long Distance
Power Transmission. Steam Plants, Electric
Lighting and Power Systems. Tests.
Valuations. Reports.

51-53 James Building, Cor. TORONTO, CANADA
King and Yonge Streets
Telephones: Office—Long Distance Main 3047
Residence—Long Distance North 2204
Telegraphic address: "Rodparke."
W. U. Code, Univ. Edition.

WILLIAM H. BREITHAUP, C.E.

M. Am. Soc. C.E., M. CAN. SOC. C.E.
CONSULTING STRUCTURAL ENGINEER

Foundations, Bridges, Buildings.
BERLIN, ONT.

CEMENT TESTING

Dr. J. T. Donald

Official Analyst to the Dominion Government.
Established 1880.
Physical and Chemical Tests on all kinds of
CEMENTS and RAW MATERIALS. Prompt
returns and lowest rates consistent with accurate
work.
112 St. Francois Xavier Street, Montreal, Canada

ROSS & HOLTGATE

Consulting and
Supervising Engineers

Waterworks, Electric Light and Power
Plants, Structural Work, Reports,
Estimates, Arbitrations.

80 ST. FRANCOIS XAVIER ST. - MONTREAL

RAILS For Contractors, Switches, Gir-
dars, &c.
New and Second Hand
**LOCOMOTIVES AND
CARS**

John J. Gartshore

81 Front St. West,
Opposite Queen's Hotel.) TORONTO.

FIREMEN'S LADDERS

—AND—
LADDER TRUCKS

We make the lightest, quickest,
strongest and cheapest. Every Town
and Village needs them and can afford
them. They will save 50 times their
price in insurance premiums. Write
for circulars and quotations.

THE WAGGONER LADDER CO., Limited
LONDON - ONT.

John H. Jackson

CIVIL ENGINEER

WATER POWER, ELECTRIC RAIL-
WAYS, STRUCTURAL STEEL.
Niagara Falls, Canada

Associated with Charles H. Mitchell,
C. E., Hydraulic Engineer.

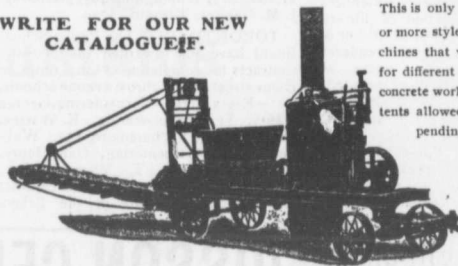
CHARLES BRANDEIS

Consulting Electrical and Mechan-
ical Engineer.

Electric Lighting, Power and Railway
Plants.
Liverpool London and Globe Building,
MONTREAL.
Long Distance Telephone Main 3256.

The **Greatest Concrete Mixer** Yet Made

WRITE FOR OUR NEW
CATALOGUE.



This is only one of 30
or more styles of ma-
chines that we make
for different kinds of
concrete work. 10 pa-
tents allowed, others
pending

NUMBER OF
PATENTS

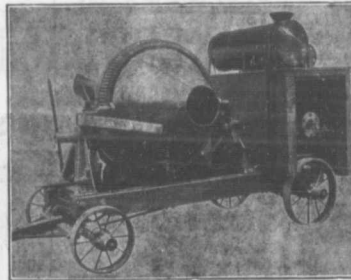
35,664
672,934
675,035
675,036
675,037
698,182
698,910
699,667
699,668
701,312

Also
Mortar and
Asphalt Mixers

DRAKE STANDARD MACHINE WORKS

Factory,
79-11-13 Garden Street, Chicago.

Office and Salesroom, 298-300-302 W. Jackson Blvd.,
CHICAGO, ILL., U. S. A.



18
Different
Sizes
and
styles.

Mounted
on
trucks
or
Trucks.

With
or
Without
Power
Attach d

No. 1 Smith Mixer on Trucks With Gasoline Engine.

SMITH MIXERS

Are Unexcelled for Rapid and Thorough Mixing.
They are the Simplest and Strongest in Con-
struction. Capacities up to 350 Cubic Yards
per Day.

W.H.C. MUSSEN & CO., 763-765 Craig St.,
MONTREAL.

**CANADIAN
CONTRACTOR'S
HAND BOOK**

and
Estimator

Third Edition

Price \$1.50; to
subscribers of
the Canadian
Architect and
Builder, \$1.00.

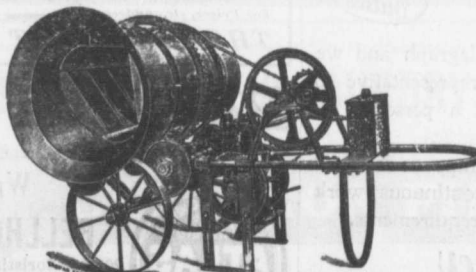
SEND FOR A COPY

C. H. Mortimer
Publishing Co.
Toronto.

Please mention THE CONTRACT RECORD when corresponding with advertisers.

THE McKELVEY CONCRETE MIXERS

MANUFACTURED BY **W. A. McKELVEY,** McKinnon Building,
TORONTO.



These machines
are made to mix
either continu-
ously or in
batches, and can
be operated
either by Hand,
Steam or Gas-
oline Power.