

A Hart-Parr Will Do It

BREAKING

experience of thousands in practically every grain raising country in the world and in all kinds of weather and soil. have demonstrated beyond the question of a doubt that no matter what the work, provided it is power, either "belt or tractive" that is wanted, the Hart-Parr Gas Tractor has always been able to furnish it and that at a Saving over either horses or steam.



The Hart-Parr Gas Tractor has long ago passed the experimental stage. It has been tried at practically every kind of farm work known to the farmer to-day and it vindicates itself in every case. It has been called the "Modern Farm Horse" because it will do any work on the farm that horses can do and this at a considerable saving over horse power. It will take the place of five men and twenty-two horses. It is oil cooled, making it a winter as well as a summer power. It burns kerosene, the cheapest known fuel for the farmer.



It is made in a wide range covering, 30, 45 and 80 brake horse power, so that no matter what the size of your farm or the amount of work you have to do, there is a Hart-Parr engine built for your purpose.

The first step is a catalogue; the second step is to buy Hart-Parr; the third step is where you farm for profit.

Portage la Prairie

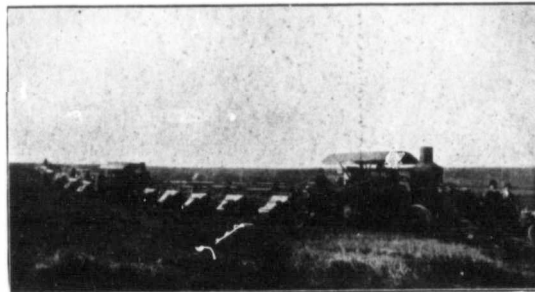
MANITOBA

Sales Agents for Alberta.



You as a farmer in Western Canada have doubtless had more or less experience with the breaking of raw prairie and you know what a slow, heart-rending process it is when horses are used. You who have tried it also know what it means to have your big steam tractor laid up for weeks on account of rainy weather that makes the ground so soft that your steam engine mires. No such troubles with a Hart-Parr; the hotter the weather the better it works and soft ground is not the "Jonah" of a Hart-Parr owner. It is always ready to break its fifteen to twenty acres in any kind of weather and any kind of soil.

HARVESTING



Harvesting in Western Canada has ever been an anxious time for the farmer. Hot weather places a low limit upon the endurance of horseflesh and the farmer longs for the power that can be driven to its limit every hour in the day. The Hart-Parr is that power and with four or five 8-foot binders attached behind and travelling at a rate of 2 to 2½ miles per hour, it is but a matter of simple calculation to see what you can do. Remember, you keep going all the time. There are no stopps.

THRESHING



Power for threshing is a strong feature of the Hart-Parr. Twenty miles from water is no terror for the outfit that is run by a Hart-Parr. In the belt it develops a large amount of steady power that will drive a threshing machine to a record day's run, as is evidenced by the thousands of letters on file in our office from those who have used Hart-Parr Gas Tractors for threshing purposes. It is results that count with the thresherman and it is results of a profitable kind that the Hart-Parr always gives.