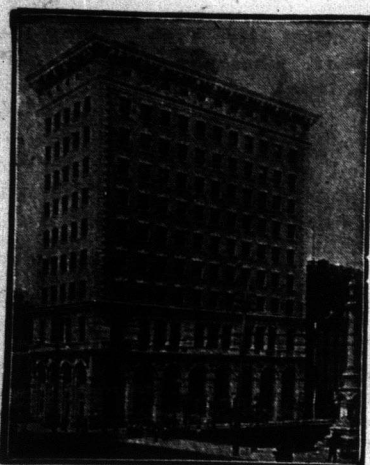


## UNION BANK OF CANADA

Established 1865



**HEAD OFFICE - WINNIPEG**  
 Paid Up Capital.....\$5,000,000  
 Reserve.....3,400,000  
 Total Assets, over.....\$8,500,000  
**HON. PRESIDENT—Wm. PRICE, ESQ.,**  
**PRESIDENT—JOHN GALT, ESQ.,**  
**VICE-PRESIDENTS**  
**R. T. RILEY, ESQ. G. H. THOMSON, ESQ.**  
**DIRECTORS**  
 W. R. ALLAN, ESQ.  
 HON. S. BARKER, ESQ., P.C., M.  
 M. BULL, ESQ.  
 COL. JOHN W. CARSON.  
 B. B. CRONIN, ESQ.  
 E. L. DREWRY, ESQ.  
 E. E. A. DU VERNET, ESQ., K.C.  
 S. HAAS, ESQ.  
 J. S. HOUGH, ESQ., K.C.  
 F. E. KENASTON, ESQ.  
 Wm. SHAW, ESQ.  
 G. H. BALFOUR, General Manager  
 H. B. SHAW, Assistant General Manager.  
 F. W. S. CRISPO, Superintendent of Branches.

Head Office, Winnipeg.

6 Princes Street, E.C., and West End Branch, Haymarket, S.W.

### Branches and Agencies West of the Great Lakes.

Manitoba—Baldur, Birtle, Boissevain, Brandon, Carberry, Carman, Carroll, Clearwater, Crystal City, Cypress River, Dauphin, Deloraine, Glenboro, Hamiota, Hartney, Holland, Killarney, Manitou, McCreary, Melita, Minnedosa, Minto, Morden, Neepawa, Newdale, Nings, Rapid City, Roblin, Roland, Russell, Shoal Lake, Somerset, Souris, Strathclair, The Pas, Virden, Waskada, Wawanesa, Wellwood, Winnipeg.

Saskatchewan—Abbey, Adanac, Alaskan, Arcola, Asquith, Assiniboia, Bounty, Buchanan, Cabri, Canora, Carlyle, Craik, Cupar, Cut Knife, Dinsmore, Lummer, East End, Esterhazy, Estevan, Eyebrow, Fillmore, Gravelbourg, Guernsey, Gull Lake, Herbert, Houghton, Humboldt, Indian Head, Jansen, Kelfield, Kerrobert, Kindersley, Landis, Lang, Lanigan, Lemberg, Loversa, Lumsden, Luseland, Macklin, Maple Creek, Maryfield, MacRorie, Melfort, Milestone, Moose Jaw, Moosomin, Morse, Netherhill, Neudorf, Ogema, Outlook, Oxbow, Pense, Perdue, Piapot, Plenty, Prince Albert, Qu'Appelle, Regina, Robsart, Rocanville, Rosetown, Saskatoon, Scott, Sceptre, Shaunavon, Simpson, Sintaluta, Southey, Strassburg, Swift Current, Tessier, Theodore, Togo, Tompkins, Vanguard, Virden, Verigin, Viceroy, Wapella, Wawota, Watrous, Webb, Weyburn, Wilkie, Windthorst, Wolseley, Yorkton, Zealandia.

Alberta—Airdrie, Alix, Barons, Bashaw, Bassano, Bellevue, Blackie, Blairmore, Bowden, Bow Island, Brooks, Bruderheim, Calgary, Carbon, Cardston, Carstairs, Carleton Place, Chinook, Claresholm, Cochrane, Consort, Cowley, Didsbury, Edmonton, Empress, Foremost, Fort Saskatchewan, Grande Prairie, Grassy Lake, Hanna, High River, Hillcrest, Innisfail, Irvine, Jenner, Lacombe, Langdon, Lethbridge, MacLeod, Medicine Hat, Okotoks, Passburg, Pincher Creek, Seven Persons, Standard, Strathmore, Swallow, Three Hills, Wainwright, Winneduc.

British Columbia—Enderby, Glacier, Hazelton, Lillooet, Nansimo, New Hazelton, Newport, New Westminster, Prince George, End of Steel G.T.P., West, Prince Rupert, Smithers, Squamish, Telkwa, Vancouver, Vanderhoof, Vernon, Victoria.

This Bank, having over \$10 Branches in Canada, extending from Halifax to Prince Rupert, offers excellent facilities for the transaction of every description of banking business. It has correspondents in all cities of importance throughout Canada, the United States, the Continent of Europe, and the British Colonies.

Collections made in all parts of the Dominion, and returns promptly remitted at lowest rates of exchange.

Two Central Offices in Winnipeg—Main St. and William Ave., D. M. Neeve, Mgr. Portage Ave., cor. Garry St. (adjoining Post Office, F. J. Boulton, Mgr. Other Branches in Winnipeg as follows—Corydon Ave., Logan Ave., North End, Sargent Ave., Portage Ave. and Arlington St., Sargent Ave. and Arlington St., 490 Portage Ave.

## FARMERS!

You will get good satisfaction and the best possible cash results by employing our services to look after and dispose of your carlot shipments of Wheat, Oats, Barley and Flax. Liberal advances against shipping bills at 7 per cent interest.

**Thompson, Sons & Co.**

700 W Grain Exchange

Winnipeg

## HAVE YOU A BAD LEG

With Wounds that discharge or otherwise, perhaps surrounded with inflammation and swollen, that when you press your finger on the inflamed part it leaves the impression under the skin you which defies all the have tried. Perhaps swollen, the joints same with the the skin may be dis- may be wounds; allowed to con- you of the You may have hospitals and is hopeless, or to amputation, can cure you. I don't say perhaps, but I will. Send to the Drug Stores for a Box of

## GRASSHOPPER

ointment and PILLS, which is a certain cure for Bad Legs, Poisoned Hands, Ulcers and Joints, Housemaid's Knee, Carbuncles, Snake and Insect Bites, &c. English Prices, 1/11 and 2/9 each. See Trade Mark of a Grasshopper on a Green Label. Prepared by ALBERT, Albert House, 73 Farringdon Street, London, England.

When writing advertisers please mention The Western Home Monthly.

## Xmas Excursions

to the

## Old Country

Tickets on Sale

November 7th to December 31st

### BOOK NOW!

Limited number of sailings and you are therefore urged to arrange your reservations without any delay. Avoid being assigned undesirable accommodation or the possibility of not procuring passage on your favorite Steamer.

All Grand Trunk Pacific Agents have rates, sailings, accommodation and tickets. They will gladly place themselves at your service



**W. J. QUINLAN**  
 District Passenger Agent,  
 Union Station, Winnipeg,  
 Man.

## About the Farm

### Large v. Small Farms

Which is the best for the country, or for a state: that its valuable farm lands be divided into great landed estates, or worked into small farms? That makes a difference where you are—the nature of the land and the people. By small farms we do not mean especially the twenty or forty acre tracts, yet the average 160 acre farm might be classed in this sense as a small farm. In a semi-arid, or arid, section where it takes many acres to graze a steer, it is folly to speak of small farms at all, for none could live on such a farm. But in sections where the land is very fertile, as it is in most of the states of the Mississippi and Ohio valleys, a 160 acre farm will readily support a family and a much smaller tract properly farmed will do so.

In pioneer days when land was plentiful the great estates of the tobacco and cotton planter of Virginia, and the great sugar plantations of Louisiana and the great corn farms of southern Illinois and wheat fields of the Missouri valley states were a blessing to the country. They gave employment and furnished products to those of less means, but now that land is getting more scarce, and the population more dense, conditions have changed. A landed aristocracy has been a curse to England and likewise will be a curse to this country.

The people of Louisiana are awake to the situation and desire to see the great cane plantations broken up into smaller farms. The adverse tariff legislation seems to be the climax that will bring about this much needed change. In a way it will be too bad if the re-adjustment of conditions in that proud state should cause a loss of that splendid southern hospitality. Let us hope it will not happen. But one thing is certain, the great cane and cotton and rice plantations will be divided into smaller tracts and this will make homes for a great number of thrifty farmers from the north who desire a milder climate.

In due course of time we will awake to the necessity of sub-dividing our great corn and wheat farms, for one-crop farming, no matter where it is, creates intolerable conditions that have no place in this country. Let us take a lesson from Louisiana which is now going through the throes of an agricultural transformation. We must discourage one-crop farming on a large scale, and encourage the ownership of small farms where live stock and diversified farming may prevail. The Texans are seeking relief through a system of taxation that will break up landlordism on such stupendous scale as prevails there. Far better is small farm ownership.

### My, How They Eat!

By M. F. Greeley.

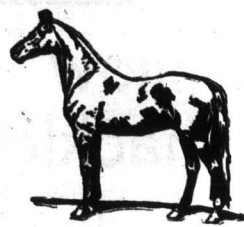
"I'm so glad I sold my old hens and roosters off early," said a successful poultry woman of Wadena, Minn., to the writer a few days ago. "I got more for them than I could now, or can later, and it has let up so on my feed bill. There are so many growing young chickens, roosters as well as pullets, around at this time of the year, and my, how they eat!"

This has been our experience, and one reason why many flocks of poultry are unprofitable and go far into cold weather before the old birds begin to molt or the young ones to mature is because they are underfed through the late summer and early fall months.

Few realize how young growing chickens eat, and so they only slightly increase the usual feed because of their being with the flock, when as a matter of fact, the average flock of a farm requires two or three times as much at this season as it does earlier in the spring and summer.

More than all this, there are not so many bugs, worms, flies, etc., as earlier in the season; and again the hen shedding her feathers requires especially nutritious feed. The better they are fed the sooner they will be through molting

## SAVE- THE-HORSE



### Scarcity of Horses

predicted as a result of the war, stirrs owners of cripples and lame ones to immediate activity. It's the opportunity when every horse should be made sound and brought to the highest value. If you have a lame horse write to-day; it costs nothing for advice and there will be no string to it.

SAVE-THE-HORSE is the humane treatment for sore, lame and blemished horses. It enjoys the distinction of having more imitators and followers than any veterinary remedy on the market.

### YOU FACE

No lingering, discouraging case of lameness to-day that we have not met, studied and CURED.

We are the Originators of this plan of treating horses—Under Signed Contract to Return Money if Remedy Fails on Ringbone—Thoropin—SPAVIN or ANY Shoulder, Knee, Ankle, Hoof and Tendon Disease.

Remember—No blistering or loss of hair. Horse works as usual—any season.

### BOOK FREE

BUT WRITE and we will send our BOOK—Sample Contract and ADVICE—ALL FREE to (Horse Owners and Managers—only). Address

TROY CHEMICAL CO., 148 Van Horn St., Toronto, Ont.

(Also Binghamton, N.Y.)

Druggists and Dealers everywhere sell Save-The-Horse WITH CONTRACT, or we send by Mail or Express paid.

## 20 Reasons Why You Should Investigate the SANDOW Kerosene Stationary ENGINE

It runs on kerosene (coal oil), gasoline, distillate and alcohol without change in equipment—starts without cranking—runs in either direction—throttle governed—hopper and tank-cooled—speed controlled while running—no cams—no valves—no gears—no sprockets—only three moving parts—light weight—easily portable—great power—starts easily at forty degrees below zero—complete ready to run—children operate them—low factory prices based on enormous output—30 day money-back trial—10 years ironclad guarantee. Size, 11-2 to 18 horsepower. Send a postal today for free catalog which tells how Sandow will be useful to you. No post-charge. Pocket agents' and middlemen's commissions by dealing direct with factory. (602) Detroit Motor Car Supply Co., 600 Canton Ave., Detroit, Mich.

## BLACK LEG

LOSSES SURELY PREVENTED by Cutter's Blackleg Pills. Low-priced, fresh, reliable; preferred by Western stockmen, because they protect where other vaccines fail. Write for booklet and testimonials. 10-dose pkg. Blackleg Pills \$1.00 50-dose pkg. Blackleg Pills 4.00 Cutter's Blackleg Pill Injector 1.50 Discounts: 250 doses, 10 p. ct.; 500 doses, 20 p. ct. Use any injector, but Cutter's simplest and strongest. Every package dated, unused pills exchangeable for fresh after date on package. Do not use old vaccine (ours or any other), as it affords less protection than fresh. Insist on Cutter's. If unavailable, order direct. Send check or M. O., we pay charges and ship promptly. Vaccine and injectors pass duty free. THE CUTTER LABORATORY, Berkeley, California.

## BUY YOUR HARNESS BY MAIL

AND SAVE MONEY

COMPLETE SADDLERY CATALOGUE FREE  
 Winnipeg Saddlery Co. : Winnipeg, Man.

Write for my Complete HARNESS CATALOGUE "SQUARE DEAL" Harness direct from MAKER TO USER THOS. MCKNIGHT WINNIPEG, MAN.

Don't Throw it Away Does Your Granite Dish or Hot Water Bag Leak? USE MENDETS A PATENT PATCH They mend all leaks in all utensils—tin, brass, copper, granite, hot water bags, etc. No solder, cement or rivet. Anyone can use them; fit any surface, two million in use. Send for sample pkg., 10c. COMPLETE PACKAGE ASSORTED SIZES, 7c. POSTPAID. Agents wanted. Collette Mfg. Co., Dept. B Collingwood, Ont.

When writing advertisers please mention The Western Home Monthly.