

LADIES' COSTUME, CONSISTING OF A WAIST HAVING A BLOUSE FRONT CLOSED ALONG THE LEFT SHOULDER AND UNDER-ARM SEAMS, AND A FIVE-GORED SKIRT, WITH FAN BACK. (KNOWN AS THE GUINEVERE GOWN.)

(For Illustrations see Page 373.)

No. 9401.—By referring to figure No. 164 B in this number of THE DELINEATOR this costume may be again seen.

This costume shows new and stylish features and is fashionably known as the Guinevere gown. It is here pictured made of brown *drap d'été* and silk and decorated with silk plaitings, a ribbon sash and insertion. The waist is provided with a fitted lining that is closed at the center of the front. A yoke of finely-tucked silk is revealed above the fronts and back of the waist, which are shaped low—the back in rounding outline and the front in fanciful V effect. The front is arranged on a dart-fitted lining and closed along the left shoulder and under-arm seams; it has a wide, downward-turning plait in each shoulder edge and gathered fulness at the waist, and droops in pouch style over a ribbon sash that falls in two long ends at the back, where it is bowed. The back is smooth across the shoulders and has a little fulness laid in plaits at the lower edge. The two-seam sleeves are arranged over coat-shaped linings and may be plain or in tabs at the wrists; they are gathered at the top to stand out moderately under epaulette tabs that are bordered with insertion. A knife-plaiting of silk rises from the standing collar, which is encircled by a stock of the silk.

The skirt consists of five gores—a front-gore, a narrow gore at each side and two wide back-gores that are laid in three backward-turning plaits at each side of the center seam, the plaits expanding in fan style to the lower edge, where the skirt measures about four yards round in the medium sizes. The front of the skirt is trimmed *en tablier* with plaitings and insertion. A small bustle or any style of skirt extender may be used.

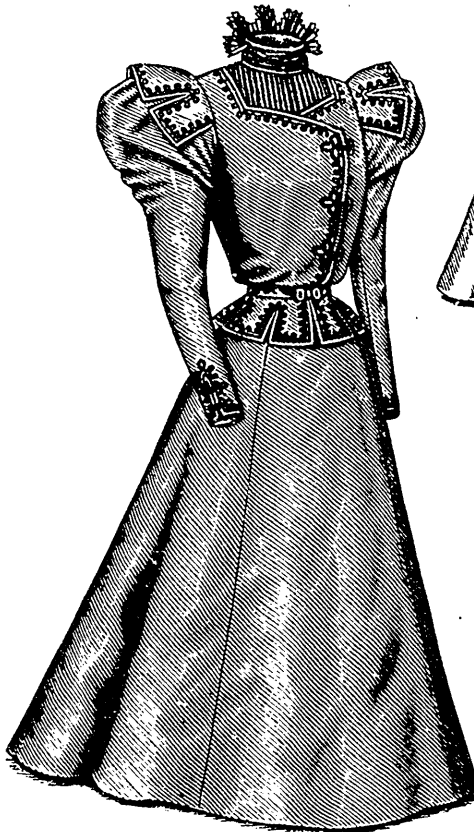
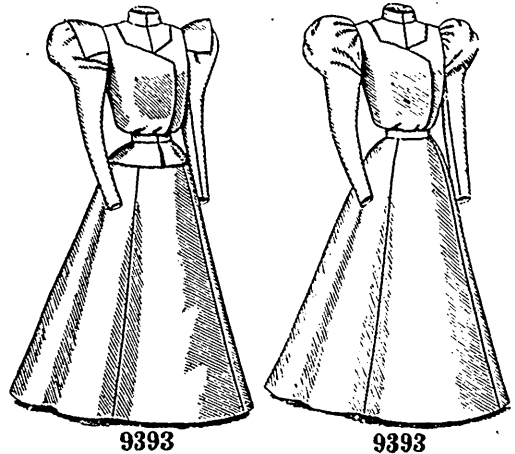
As even the tailor-made costume is now trimmed, many new ideas in the arrangement of decoration on skirts and waists are shown. This mode permits of lavish decoration and will be chosen for Venetian cloth, étamine and the fine, soft weaves.

We have pattern 9401 in ten sizes for ladies from thirty to forty-two inches, bust measure. For a lady of medium size, the costume needs four yards and three-fourths of goods fifty inches wide, with a yard and a fourth of silk twenty inches wide for the yoke and stock. Price of pattern, 1s. 8d. or 40 cents.

FIGURE NO. 160 B.—LADIES' AT HOME TOILETTE.

(For Illustrations see Page 274.)

FIGURE NO. 160 B.—This consists of a Ladies' basque-waist and skirt. The basque-waist pattern, which is No. 9389 and

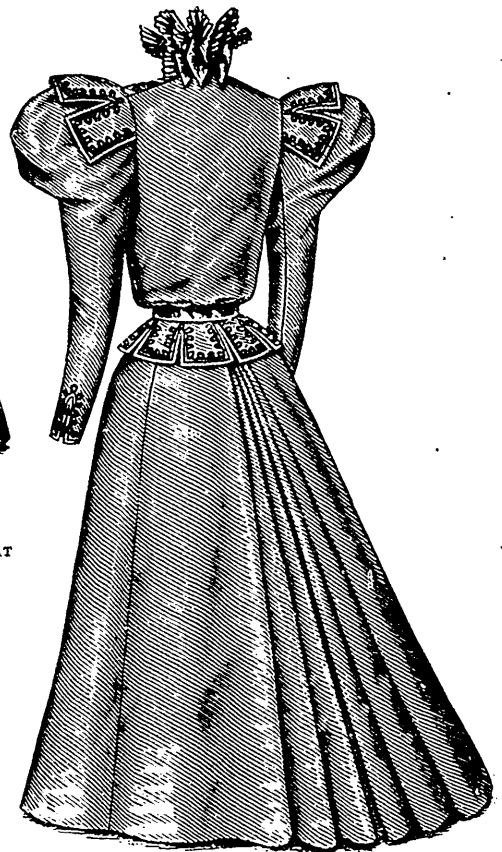


9393

Front View.

LADIES' COSTUME, CONSISTING OF A RUSSIAN BLOUSE (THAT MAY BE MADE WITH OR WITHOUT PLAIN OR TAB SLEEVE-CAPS AND PEPLUM) AND A FIVE-GORED SKIRT WITH FAN BACK.

(For Description see Page 369.)



9393

Side-Back View.

costs 1s. or 25 cents, is in six sizes for ladies from thirty to forty inches, bust measure, and is differently portrayed on page 393. The skirt pattern, which is No. 9398 and costs 1s. 3d. or 30 cents, is in nine sizes from twenty to thirty-six inches, waist measure, and is shown again on page 401.

(Descriptions Continued on Page 373.)