

KEW BEACH
\$1100 will buy an 8-roomed frame house. First-class investment. Only \$300 down.
H. H. WILLIAMS & CO.
Realty Brokers - 28 Victoria

Senate Reading Room
1849-1774
SENATE P O

GROUND FLOOR FOR RENT
In centre of wholesale district, 5300 square feet, immediate possession.
H. H. Williams & Co.
Realty Brokers - 28 Victoria St

ITS

PROBS—Strong easterly wind; milder, with occasional fall of snow and rain.
DEATH ROLL AT 161 ENQUIRY BEGUN INTO CAUSE OF FIRE

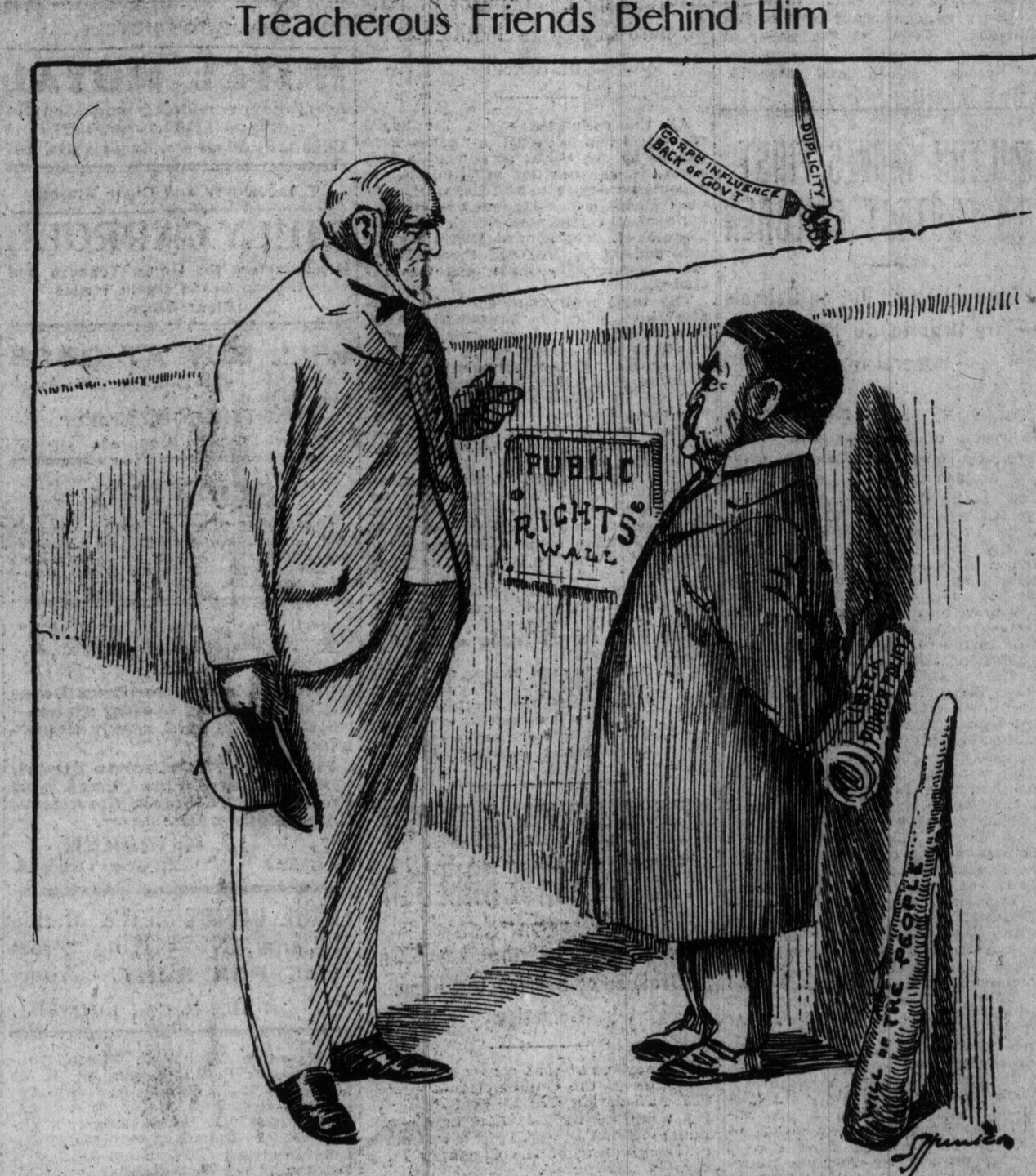
Three Little Girls Had Been Playing in Closet in the Basement in Which There Was a Quantity of Lime and Sawdust.
CITY SCHOOLS SAFE.
At last night's meeting of the board of education, Trustee Rawlinson stated that fire drill was held in Wellesley, Church-street and John-street Schools yesterday and that in each case the buildings were emptied in less than a minute—the latter two being cleared in 52 and 56 seconds respectively.

ROSS RIFLES MADE IN U. S.

That's What Canadian Detectives Are Alleged to Have Found to Be a Fact.
BOSTON, March 5.—(Special.)—Arthur Guérin, a prominent Boston Canadian, nephew of Yater, the well-known Canadian manufacturer of this city, and a man well informed on Canadian affairs, said to-night: "I am amazed to learn that the Ross Rifle Co. is having the greatest amount of its product made here. It is a subject that should interest every Canadian. In case of war or any national emergency requiring the immediate supply of arms, the Ross Rifle Co. of Quebec, reposing behind the big guns of Quebec's impregnable capitol, would be about as much use as a wooden spear factory in Texas."

TEACHEROUS FRIENDS BEHIND HIM

OLD MAN ONTARIO: Back closer to the wall, my friend, if you would avoid a knife in the back.
JOURNALISTS' BANQUET GRACED BY EARL GREY AND OTHER NOTABLES
BANK PERMEATED WITH IRREGULARITIES AND CRIME
RECEIVERS' REPORT ON AFFAIRS OF ORIGINAL BANK OF NEW YORK CHARGES GROSS MISCONDUCT.



OLD MAN ONTARIO: Back closer to the wall, my friend, if you would avoid a knife in the back.

PUBLIC FUNDS TO BURY UNIDENTIFIED VICTIMS.

CLEVELAND, March 5.—Twenty-four hours after the disaster which swept in to eternity approximately one-third of the school children of North Collinwood, the death roll numbered 161. Of these 131 had been identified, while 30 bodies remain there in a condition of mutilation probably forever beyond the chances of recognition. The work of digging in the ruins of the school-house in further search for remnants of children still missing, began with the break of day. Dawn found mothers and fathers waiting about to find their children's remains at the exterminated morgue. But little was brought forth during the day that would identify longings and it is believed to-night that all the bodies that can be removed from the ruins have been taken out.

FIREMAN IN EACH SCHOOL AND TRAIN CHILDREN ON LADDERS

Suggestions Which Are Made a Pittsburg to Prevent Holo-causts in Future.
PITTSBURG, Pa., March 5.—A. L. McKenzie, a former fire captain of Cleveland, who for 16 years taught Ohio school children fire drills, now a resident in this city, says the Cleveland disaster is likely to occur in any city unless the present method of training pupils to escape from fires is changed. Mr. McKenzie is considerably better known as an expert on escape in time of fire and has written several books on the subject. He said to-day: "The children of the North, Collinwood school, according to what I hear, lacked the proper training. It used to be that the captain of a fire district visited the firehouse schools once a week, to teach them how to climb down scaling ladders and ropes. At one time in that city this method was reduced to a science among the children. The idea of drilling the children up and down a hall, thru one door and out another, is absurd. When a fire breaks out the children immediately become panic-stricken and forget the drill. They should be taught how to scale ladders and ropes."

SHORT FOR RAILWAY BO. D

Queen's Professor Said to Be Needed at Ottawa.
KINGSTON, March 5.—(Special.)—It is learned from a reliable source in this city that Adam Shortt, professor of political science here, is to be appointed to the railway commission, and will shortly leave this university. Politics, on the Conservative side at least, are getting rather mixed in this city and Frontenac County. The J. H. Metcalfe, ex-M.P., has been adopted by the labor element, he intends to appeal also to his former Conservative supporters, and Dr. Spinkie, past President, Inspector for the county, announces his intention to run there as an independent Conservative.

WELLAND CANAL TRAFFIC

On the Welland Canal 31 millions of dollars had been expended to date. An elevator was being erected at Port Colborne which would be completed up to 300,000 bushels capacity this year. It was a question whether government ownership of elevators was a success. The present government elevators at Montreal, Halifax and St. John were not very active. Discussing the question of deepening the Welland Canal Mr. Graham said present proposals for the board and Buffalo was 1-1-30 a bushel; from Buffalo to New York 70 cents, by deepening the Erie Canal it would be carried from Buffalo to New York for 50 cents. Then by the deepening of the Welland Canal it was estimated that a rate of 2 cents could be given from Port Colborne to Montreal, Halifax and St. John. This would be an advantage of 1-8 of a cent over the deepened Erie Canal.

ELOPED AT AGE OF 74

Col. Ward Selects Young Toronto Maid.
PROVIDENCE, R.I., March 5.—(Special.)—Eloping from Toronto with Theresa Moquin, a 22-year old French maiden, Col. Victor Ward, 74 years old, the oldest living confederate army officer, former governor of Kentucky and in the staff of President Jefferson Davis of the confederacy, reached here to-day, believing they had outwitted the relatives of the girl, who they say are following them. Col. Ward is one of the best known of the south. He called on Gov. Higgins and introduced his wife. Considerable mystery was thrown around the party by two detectives who acted as a bodyguard.

WELLAND CANAL TRAFFIC

On the Welland Canal 31 millions of dollars had been expended to date. An elevator was being erected at Port Colborne which would be completed up to 300,000 bushels capacity this year. It was a question whether government ownership of elevators was a success. The present government elevators at Montreal, Halifax and St. John were not very active. Discussing the question of deepening the Welland Canal Mr. Graham said present proposals for the board and Buffalo was 1-1-30 a bushel; from Buffalo to New York 70 cents, by deepening the Erie Canal it would be carried from Buffalo to New York for 50 cents. Then by the deepening of the Welland Canal it was estimated that a rate of 2 cents could be given from Port Colborne to Montreal, Halifax and St. John. This would be an advantage of 1-8 of a cent over the deepened Erie Canal.

WELLAND CANAL TRAFFIC

On the Welland Canal 31 millions of dollars had been expended to date. An elevator was being erected at Port Colborne which would be completed up to 300,000 bushels capacity this year. It was a question whether government ownership of elevators was a success. The present government elevators at Montreal, Halifax and St. John were not very active. Discussing the question of deepening the Welland Canal Mr. Graham said present proposals for the board and Buffalo was 1-1-30 a bushel; from Buffalo to New York 70 cents, by deepening the Erie Canal it would be carried from Buffalo to New York for 50 cents. Then by the deepening of the Welland Canal it was estimated that a rate of 2 cents could be given from Port Colborne to Montreal, Halifax and St. John. This would be an advantage of 1-8 of a cent over the deepened Erie Canal.

WELLAND CANAL TRAFFIC

On the Welland Canal 31 millions of dollars had been expended to date. An elevator was being erected at Port Colborne which would be completed up to 300,000 bushels capacity this year. It was a question whether government ownership of elevators was a success. The present government elevators at Montreal, Halifax and St. John were not very active. Discussing the question of deepening the Welland Canal Mr. Graham said present proposals for the board and Buffalo was 1-1-30 a bushel; from Buffalo to New York 70 cents, by deepening the Erie Canal it would be carried from Buffalo to New York for 50 cents. Then by the deepening of the Welland Canal it was estimated that a rate of 2 cents could be given from Port Colborne to Montreal, Halifax and St. John. This would be an advantage of 1-8 of a cent over the deepened Erie Canal.

WELLAND CANAL TRAFFIC

On the Welland Canal 31 millions of dollars had been expended to date. An elevator was being erected at Port Colborne which would be completed up to 300,000 bushels capacity this year. It was a question whether government ownership of elevators was a success. The present government elevators at Montreal, Halifax and St. John were not very active. Discussing the question of deepening the Welland Canal Mr. Graham said present proposals for the board and Buffalo was 1-1-30 a bushel; from Buffalo to New York 70 cents, by deepening the Erie Canal it would be carried from Buffalo to New York for 50 cents. Then by the deepening of the Welland Canal it was estimated that a rate of 2 cents could be given from Port Colborne to Montreal, Halifax and St. John. This would be an advantage of 1-8 of a cent over the deepened Erie Canal.

WELLAND CANAL TRAFFIC

On the Welland Canal 31 millions of dollars had been expended to date. An elevator was being erected at Port Colborne which would be completed up to 300,000 bushels capacity this year. It was a question whether government ownership of elevators was a success. The present government elevators at Montreal, Halifax and St. John were not very active. Discussing the question of deepening the Welland Canal Mr. Graham said present proposals for the board and Buffalo was 1-1-30 a bushel; from Buffalo to New York 70 cents, by deepening the Erie Canal it would be carried from Buffalo to New York for 50 cents. Then by the deepening of the Welland Canal it was estimated that a rate of 2 cents could be given from Port Colborne to Montreal, Halifax and St. John. This would be an advantage of 1-8 of a cent over the deepened Erie Canal.

WELLAND CANAL TRAFFIC

On the Welland Canal 31 millions of dollars had been expended to date. An elevator was being erected at Port Colborne which would be completed up to 300,000 bushels capacity this year. It was a question whether government ownership of elevators was a success. The present government elevators at Montreal, Halifax and St. John were not very active. Discussing the question of deepening the Welland Canal Mr. Graham said present proposals for the board and Buffalo was 1-1-30 a bushel; from Buffalo to New York 70 cents, by deepening the Erie Canal it would be carried from Buffalo to New York for 50 cents. Then by the deepening of the Welland Canal it was estimated that a rate of 2 cents could be given from Port Colborne to Montreal, Halifax and St. John. This would be an advantage of 1-8 of a cent over the deepened Erie Canal.

WELLAND CANAL TRAFFIC

On the Welland Canal 31 millions of dollars had been expended to date. An elevator was being erected at Port Colborne which would be completed up to 300,000 bushels capacity this year. It was a question whether government ownership of elevators was a success. The present government elevators at Montreal, Halifax and St. John were not very active. Discussing the question of deepening the Welland Canal Mr. Graham said present proposals for the board and Buffalo was 1-1-30 a bushel; from Buffalo to New York 70 cents, by deepening the Erie Canal it would be carried from Buffalo to New York for 50 cents. Then by the deepening of the Welland Canal it was estimated that a rate of 2 cents could be given from Port Colborne to Montreal, Halifax and St. John. This would be an advantage of 1-8 of a cent over the deepened Erie Canal.

WELLAND CANAL TRAFFIC

On the Welland Canal 31 millions of dollars had been expended to date. An elevator was being erected at Port Colborne which would be completed up to 300,000 bushels capacity this year. It was a question whether government ownership of elevators was a success. The present government elevators at Montreal, Halifax and St. John were not very active. Discussing the question of deepening the Welland Canal Mr. Graham said present proposals for the board and Buffalo was 1-1-30 a bushel; from Buffalo to New York 70 cents, by deepening the Erie Canal it would be carried from Buffalo to New York for 50 cents. Then by the deepening of the Welland Canal it was estimated that a rate of 2 cents could be given from Port Colborne to Montreal, Halifax and St. John. This would be an advantage of 1-8 of a cent over the deepened Erie Canal.

WELLAND CANAL TRAFFIC

On the Welland Canal 31 millions of dollars had been expended to date. An elevator was being erected at Port Colborne which would be completed up to 300,000 bushels capacity this year. It was a question whether government ownership of elevators was a success. The present government elevators at Montreal, Halifax and St. John were not very active. Discussing the question of deepening the Welland Canal Mr. Graham said present proposals for the board and Buffalo was 1-1-30 a bushel; from Buffalo to New York 70 cents, by deepening the Erie Canal it would be carried from Buffalo to New York for 50 cents. Then by the deepening of the Welland Canal it was estimated that a rate of 2 cents could be given from Port Colborne to Montreal, Halifax and St. John. This would be an advantage of 1-8 of a cent over the deepened Erie Canal.

WELLAND CANAL TRAFFIC

On the Welland Canal 31 millions of dollars had been expended to date. An elevator was being erected at Port Colborne which would be completed up to 300,000 bushels capacity this year. It was a question whether government ownership of elevators was a success. The present government elevators at Montreal, Halifax and St. John were not very active. Discussing the question of deepening the Welland Canal Mr. Graham said present proposals for the board and Buffalo was 1-1-30 a bushel; from Buffalo to New York 70 cents, by deepening the Erie Canal it would be carried from Buffalo to New York for 50 cents. Then by the deepening of the Welland Canal it was estimated that a rate of 2 cents could be given from Port Colborne to Montreal, Halifax and St. John. This would be an advantage of 1-8 of a cent over the deepened Erie Canal.

WELLAND CANAL TRAFFIC

On the Welland Canal 31 millions of dollars had been expended to date. An elevator was being erected at Port Colborne which would be completed up to 300,000 bushels capacity this year. It was a question whether government ownership of elevators was a success. The present government elevators at Montreal, Halifax and St. John were not very active. Discussing the question of deepening the Welland Canal Mr. Graham said present proposals for the board and Buffalo was 1-1-30 a bushel; from Buffalo to New York 70 cents, by deepening the Erie Canal it would be carried from Buffalo to New York for 50 cents. Then by the deepening of the Welland Canal it was estimated that a rate of 2 cents could be given from Port Colborne to Montreal, Halifax and St. John. This would be an advantage of 1-8 of a cent over the deepened Erie Canal.

WELLAND CANAL TRAFFIC

On the Welland Canal 31 millions of dollars had been expended to date. An elevator was being erected at Port Colborne which would be completed up to 300,000 bushels capacity this year. It was a question whether government ownership of elevators was a success. The present government elevators at Montreal, Halifax and St. John were not very active. Discussing the question of deepening the Welland Canal Mr. Graham said present proposals for the board and Buffalo was 1-1-30 a bushel; from Buffalo to New York 70 cents, by deepening the Erie Canal it would be carried from Buffalo to New York for 50 cents. Then by the deepening of the Welland Canal it was estimated that a rate of 2 cents could be given from Port Colborne to Montreal, Halifax and St. John. This would be an advantage of 1-8 of a cent over the deepened Erie Canal.

WELLAND CANAL TRAFFIC

On the Welland Canal 31 millions of dollars had been expended to date. An elevator was being erected at Port Colborne which would be completed up to 300,000 bushels capacity this year. It was a question whether government ownership of elevators was a success. The present government elevators at Montreal, Halifax and St. John were not very active. Discussing the question of deepening the Welland Canal Mr. Graham said present proposals for the board and Buffalo was 1-1-30 a bushel; from Buffalo to New York 70 cents, by deepening the Erie Canal it would be carried from Buffalo to New York for 50 cents. Then by the deepening of the Welland Canal it was estimated that a rate of 2 cents could be given from Port Colborne to Montreal, Halifax and St. John. This would be an advantage of 1-8 of a cent over the deepened Erie Canal.

WELLAND CANAL TRAFFIC

On the Welland Canal 31 millions of dollars had been expended to date. An elevator was being erected at Port Colborne which would be completed up to 300,000 bushels capacity this year. It was a question whether government ownership of elevators was a success. The present government elevators at Montreal, Halifax and St. John were not very active. Discussing the question of deepening the Welland Canal Mr. Graham said present proposals for the board and Buffalo was 1-1-30 a bushel; from Buffalo to New York 70 cents, by deepening the Erie Canal it would be carried from Buffalo to New York for 50 cents. Then by the deepening of the Welland Canal it was estimated that a rate of 2 cents could be given from Port Colborne to Montreal, Halifax and St. John. This would be an advantage of 1-8 of a cent over the deepened Erie Canal.

WELLAND CANAL TRAFFIC

On the Welland Canal 31 millions of dollars had been expended to date. An elevator was being erected at Port Colborne which would be completed up to 300,000 bushels capacity this year. It was a question whether government ownership of elevators was a success. The present government elevators at Montreal, Halifax and St. John were not very active. Discussing the question of deepening the Welland Canal Mr. Graham said present proposals for the board and Buffalo was 1-1-30 a bushel; from Buffalo to New York 70 cents, by deepening the Erie Canal it would be carried from Buffalo to New York for 50 cents. Then by the deepening of the Welland Canal it was estimated that a rate of 2 cents could be given from Port Colborne to Montreal, Halifax and St. John. This would be an advantage of 1-8 of a cent over the deepened Erie Canal.

WELLAND CANAL TRAFFIC

On the Welland Canal 31 millions of dollars had been expended to date. An elevator was being erected at Port Colborne which would be completed up to 300,000 bushels capacity this year. It was a question whether government ownership of elevators was a success. The present government elevators at Montreal, Halifax and St. John were not very active. Discussing the question of deepening the Welland Canal Mr. Graham said present proposals for the board and Buffalo was 1-1-30 a bushel; from Buffalo to New York 70 cents, by deepening the Erie Canal it would be carried from Buffalo to New York for 50 cents. Then by the deepening of the Welland Canal it was estimated that a rate of 2 cents could be given from Port Colborne to Montreal, Halifax and St. John. This would be an advantage of 1-8 of a cent over the deepened Erie Canal.

WELLAND CANAL TRAFFIC

On the Welland Canal 31 millions of dollars had been expended to date. An elevator was being erected at Port Colborne which would be completed up to 300,000 bushels capacity this year. It was a question whether government ownership of elevators was a success. The present government elevators at Montreal, Halifax and St. John were not very active. Discussing the question of deepening the Welland Canal Mr. Graham said present proposals for the board and Buffalo was 1-1-30 a bushel; from Buffalo to New York 70 cents, by deepening the Erie Canal it would be carried from Buffalo to New York for 50 cents. Then by the deepening of the Welland Canal it was estimated that a rate of 2 cents could be given from Port Colborne to Montreal, Halifax and St. John. This would be an advantage of 1-8 of a cent over the deepened Erie Canal.

WELLAND CANAL TRAFFIC

On the Welland Canal 31 millions of dollars had been expended to date. An elevator was being erected at Port Colborne which would be completed up to 300,000 bushels capacity this year. It was a question whether government ownership of elevators was a success. The present government elevators at Montreal, Halifax and St. John were not very active. Discussing the question of deepening the Welland Canal Mr. Graham said present proposals for the board and Buffalo was 1-1-30 a bushel; from Buffalo to New York 70 cents, by deepening the Erie Canal it would be carried from Buffalo to New York for 50 cents. Then by the deepening of the Welland Canal it was estimated that a rate of 2 cents could be given from Port Colborne to Montreal, Halifax and St. John. This would be an advantage of 1-8 of a cent over the deepened Erie Canal.

WELLAND CANAL TRAFFIC

On the Welland Canal 31 millions of dollars had been expended to date. An elevator was being erected at Port Colborne which would be completed up to 300,000 bushels capacity this year. It was a question whether government ownership of elevators was a success. The present government elevators at Montreal, Halifax and St. John were not very active. Discussing the question of deepening the Welland Canal Mr. Graham said present proposals for the board and Buffalo was 1-1-30 a bushel; from Buffalo to New York 70 cents, by deepening the Erie Canal it would be carried from Buffalo to New York for 50 cents. Then by the deepening of the Welland Canal it was estimated that a rate of 2 cents could be given from Port Colborne to Montreal, Halifax and St. John. This would be an advantage of 1-8 of a cent over the deepened Erie Canal.

WELLAND CANAL TRAFFIC

On the Welland Canal 31 millions of dollars had been expended to date. An elevator was being erected at Port Colborne which would be completed up to 300,000 bushels capacity this year. It was a question whether government ownership of elevators was a success. The present government elevators at Montreal, Halifax and St. John were not very active. Discussing the question of deepening the Welland Canal Mr. Graham said present proposals for the board and Buffalo was 1-1-30 a bushel; from Buffalo to New York 70 cents, by deepening the Erie Canal it would be carried from Buffalo to New York for 50 cents. Then by the deepening of the Welland Canal it was estimated that a rate of 2 cents could be given from Port Colborne to Montreal, Halifax and St. John. This would be an advantage of 1-8 of a cent over the deepened Erie Canal.

WELLAND CANAL TRAFFIC

On the Welland Canal 31 millions of dollars had been expended to date. An elevator was being erected at Port Colborne which would be completed up to 300,000 bushels capacity this year. It was a question whether government ownership of elevators was a success. The present government elevators at Montreal, Halifax and St. John were not very active. Discussing the question of deepening the Welland Canal Mr. Graham said present proposals for the board and Buffalo was 1-1-30 a bushel; from Buffalo to New York 70 cents, by deepening the Erie Canal it would be carried from Buffalo to New York for 50 cents. Then by the deepening of the Welland Canal it was estimated that a rate of 2 cents could be given from Port Colborne to Montreal, Halifax and St. John. This would be an advantage of 1-8 of a cent over the deepened Erie Canal.

WELLAND CANAL TRAFFIC

On the Welland Canal 31 millions of dollars had been expended to date. An elevator was being erected at Port Colborne which would be completed up to 300,000 bushels capacity this year. It was a question whether government ownership of elevators was a success. The present government elevators at Montreal, Halifax and St. John were not very active. Discussing the question of deepening the Welland Canal Mr. Graham said present proposals for the board and Buffalo was 1-1-30 a bushel; from Buffalo to New York 70 cents, by deepening the Erie Canal it would be carried from Buffalo to New York for 50 cents. Then by the deepening of the Welland Canal it was estimated that a rate of 2 cents could be given from Port Colborne to Montreal, Halifax and St. John. This would be an advantage of 1-8 of a cent over the deepened Erie Canal.

WELLAND CANAL TRAFFIC

On the Welland Canal 31 millions of dollars had been expended to date. An elevator was being erected at Port Colborne which would be completed up to 300,000 bushels capacity this year. It was a question whether government ownership of elevators was a success. The present government elevators at Montreal, Halifax and St. John were not very active. Discussing the question of deepening the Welland Canal Mr. Graham said present proposals for the board and Buffalo was 1-1-30 a bushel; from Buffalo to New York 70 cents, by deepening the Erie Canal it would be carried from Buffalo to New York for 50 cents. Then by the deepening of the Welland Canal it was estimated that a rate of 2 cents could be given from Port Colborne to Montreal, Halifax and St. John. This would be an advantage of 1-8 of a cent over the deepened Erie Canal.

WELLAND CANAL TRAFFIC

On the Welland Canal 31 millions of dollars had been expended to date. An elevator was being erected at Port Colborne which would be completed up to 300,000 bushels capacity this year. It was a question whether government ownership of elevators was a success. The present government elevators at Montreal, Halifax and St. John were not very active. Discussing the question of deepening the Welland Canal Mr. Graham said present proposals for the board and Buffalo was 1-1-30 a bushel; from Buffalo to New York 70 cents, by deepening the Erie Canal it would be carried from Buffalo to New York for 50 cents. Then by the deepening of the Welland Canal it was estimated that a rate of 2 cents could be given from Port Colborne to Montreal, Halifax and St. John. This would be an advantage of 1-8 of a cent over the deepened Erie Canal.

WELLAND CANAL TRAFFIC

On the Welland Canal 31 millions of dollars had been expended to date. An elevator was being erected at Port Colborne which would be completed up to 300,000 bushels capacity this year. It was a question whether government ownership of elevators was a success. The present government elevators at Montreal, Halifax and St. John were not very active. Discussing the question of deepening the Welland Canal Mr. Graham said present proposals for the board and Buffalo was 1-1-30 a bushel; from Buffalo to New York 70 cents, by deepening the Erie Canal it would be carried from Buffalo to New York for 50 cents. Then by the deepening of the Welland Canal it was estimated that a rate of 2 cents could be given from Port Colborne to Montreal, Halifax and St. John. This would be an advantage of 1-8 of a cent over the deepened Erie Canal.

WELLAND CANAL TRAFFIC

On the Welland Canal 31 millions of dollars had been expended to date. An elevator was being erected at Port Colborne which would be completed up to 300,000 bushels capacity this year. It was a question whether government ownership of elevators was a success. The present government elevators at Montreal, Halifax and St. John were not very active. Discussing the question of deepening the Welland Canal Mr. Graham said present proposals for the board and Buffalo was 1-1-30 a bushel; from Buffalo to New York 70 cents, by deepening the Erie Canal it would be carried from Buffalo to New York for 50 cents. Then by the deepening of the Welland Canal it was estimated that a rate of 2 cents could be given from Port Colborne to Montreal, Halifax and St. John. This would be an advantage of 1-8 of a cent over the deepened Erie Canal.

WELLAND CANAL TRAFFIC

On the Welland Canal 31 millions of dollars had been expended to date. An elevator was being erected at Port Colborne which would be completed up to 300,000 bushels capacity this year. It was a question whether government ownership of elevators was a success. The present government elevators at Montreal, Halifax and St. John were not very active. Discussing the question of deepening the Welland Canal Mr. Graham said present proposals for the board and Buffalo was 1-1-30 a bushel; from Buffalo to New York 70 cents, by deepening the Erie Canal it would be carried from Buffalo to New York for 50 cents. Then by the deepening of the Welland Canal it was estimated that a rate of 2 cents could be given from Port Colborne to Montreal, Halifax and St. John. This would be an advantage of 1-8 of a cent over the deepened Erie Canal.

WELLAND CANAL TRAFFIC

On the Welland Canal 31 millions of dollars had been expended to date. An elevator was being erected at Port Colborne which would be completed up to 300,000 bushels capacity this year. It was a question whether government ownership of elevators was a success. The present government elevators at Montreal, Halifax and St. John were not very active. Discussing the question of deepening the Welland Canal Mr. Graham said present proposals for the board and Buffalo was 1-1-30 a bushel; from Buffalo to New York 70 cents, by deepening the Erie Canal it would be carried from Buffalo to New York for 50 cents. Then by the deepening of the Welland Canal it was estimated that a rate of 2 cents could be given from Port Colborne to Montreal, Halifax and St. John. This would be an advantage of 1-8 of a cent over the deepened Erie Canal.

WELLAND CANAL TRAFFIC

On the Welland Canal 31 millions of dollars had been expended to date. An elevator was being erected at Port Colborne which would be completed up to 300,000 bushels capacity this year. It was a question whether government ownership of elevators was a success. The present government elevators at Montreal, Halifax and St. John were not very active. Discussing the question of deepening the Welland Canal Mr. Graham said present proposals for the board and Buffalo was 1-1-30 a bushel; from Buffalo to New York 70 cents, by deepening the Erie Canal it would be carried from Buffalo to New York for 50 cents. Then by the deepening of the Welland Canal it was estimated that a rate of 2 cents could be given from Port Colborne to Montreal, Halifax and St. John. This would be an advantage of 1-8 of a cent over the deepened Erie Canal.

WELLAND CANAL TRAFFIC

On the Welland Canal 31 millions of dollars had been expended to date. An elevator was being erected at Port Colborne which would be completed up to 300,000 bushels capacity this year. It was a question whether government ownership of elevators was a success. The present government elevators at Montreal, Halifax and St. John were not very active. Discussing the question of deepening the Welland Canal Mr. Graham said present proposals for the board and Buffalo was 1-1-30 a bushel; from Buffalo to New York 70 cents, by deepening the Erie Canal it would be carried from Buffalo to New York for 50 cents. Then by the deepening of the Welland Canal it was estimated that a rate of 2 cents could be given from Port Colborne to Montreal, Halifax and St. John. This would be an advantage of 1-8 of a cent over the deepened Erie Canal.

WELLAND CANAL TRAFFIC

On the Welland Canal 31 millions of dollars had been expended to date. An elevator was being erected at Port Colborne which would be completed up to 300,000 bushels capacity this year. It was a question whether government ownership of elevators was a success. The present government elevators at Montreal, Halifax and St. John were not very active. Discussing the question of deepening the Welland Canal Mr. Graham said present proposals for the board and Buffalo was 1-1-30 a bushel; from Buffalo to New York 70 cents, by deepening the Erie Canal it would be carried from Buffalo to New York for 50 cents. Then by the deepening of the Welland Canal it was estimated that a rate of 2 cents could be given from Port Colborne to Montreal, Halifax and St. John. This would be an advantage of 1-8 of a cent over the deepened Erie Canal.

EXTEND I.C.R. TO THE PACIFIC

Member for South York Advocates Creation of Great State System.
OTTAWA, March 5.—(Special.)—The annual railway budget was presented by Hon. G. P. Graham this afternoon. It was Mr. Graham's first speech of importance in this house, and he dealt with the subject in an able manner. Going exhaustively into several phases of the transportation question, Mr. Graham said he had not made up his mind that the road should be placed under a commission. If under a commission, it should be a commission of one man responsible directly to the government. For the nine months ending March 31 last, the surplus of receipts over expenses amounted to \$397,000, but up to the end of the next calendar year he did not anticipate that the surplus would be so large. It might become necessary in the future in order to handle the traffic of the G. T. P., terminating at Montreal, to build short lines from Montreal to Halifax.

WELLAND CANAL TRAFFIC

On the Welland Canal 31 millions of dollars had been expended to date. An elevator was being erected at Port Colborne which would be completed up to 300,000 bushels capacity this year. It was a question whether government ownership of elevators was a success. The present government elevators at Montreal, Halifax and St. John were not very active. Discussing the question of deepening the Welland Canal Mr. Graham said present proposals for the board and Buffalo was 1-1-30 a bushel; from Buffalo to New York 70 cents, by deepening the Erie Canal it would be carried from Buffalo to New York for 50 cents. Then by the deepening of the Welland Canal it was estimated that a rate of 2 cents could be given from Port Colborne to Montreal, Halifax and St. John. This would be an advantage of 1-8 of a cent over the deepened Erie Canal.

WELLAND CANAL TRAFFIC

On the Welland Canal 31 millions of dollars had been expended to date. An elevator was being erected at Port Colborne which would be completed up to 300,000 bushels capacity this year. It was a question whether government ownership of elevators was a success. The present government elevators at Montreal, Halifax and St. John were not very active. Discussing the question of deepening the Welland Canal Mr. Graham said present proposals for the board and Buffalo was 1-1-30 a bushel; from Buffalo to New York 70 cents, by deepening the Erie Canal it would be carried from Buffalo to New York for 50 cents. Then by the deepening of the Welland Canal it was estimated that a rate of 2 cents could be given from Port Colborne to Montreal, Halifax and St. John. This would be an advantage of 1-8 of a cent over the deepened Erie Canal.

WELLAND CANAL TRAFFIC

On the Welland Canal 31 millions of dollars had been expended to date. An elevator was being erected at Port Colborne which would be completed up to 300,000 bushels capacity this year. It was a question whether government ownership of elevators was a success. The present government elevators at Montreal, Halifax and St. John were not very active. Discussing the question of deepening the Welland Canal Mr. Graham said present proposals for the board and Buffalo was 1-1-30 a bushel; from Buffalo to New York 70 cents, by deepening the Erie Canal it would be carried from Buffalo to New York for 50 cents. Then by the deepening of the Welland Canal it was estimated that a rate of 2 cents could be given from Port Colborne to Montreal, Halifax and St. John. This would be an advantage of 1-8 of a cent over the deepened Erie Canal.

WELLAND CANAL TRAFFIC

On the Welland Canal 31 millions of dollars had been expended to date. An elevator was being erected at Port Colborne which would be completed up to 300,000 bushels capacity this year. It was a question whether government ownership of elevators was a success. The present government elevators at Montreal, Halifax and St. John were not very active. Discussing the question of deepening the Welland Canal Mr. Graham said present proposals for the board and Buffalo was 1-1-30 a bushel; from Buffalo to New York 70 cents, by deepening the Erie Canal it would be carried from Buffalo to New York for 50 cents. Then by the deepening of the Welland Canal it was estimated that a rate of 2 cents could be given from Port Colborne to Montreal, Halifax and St. John. This would be an advantage of 1-8 of