

# Gravenhurst Foundry and Machine Works

GRAVENHURST, ONT.

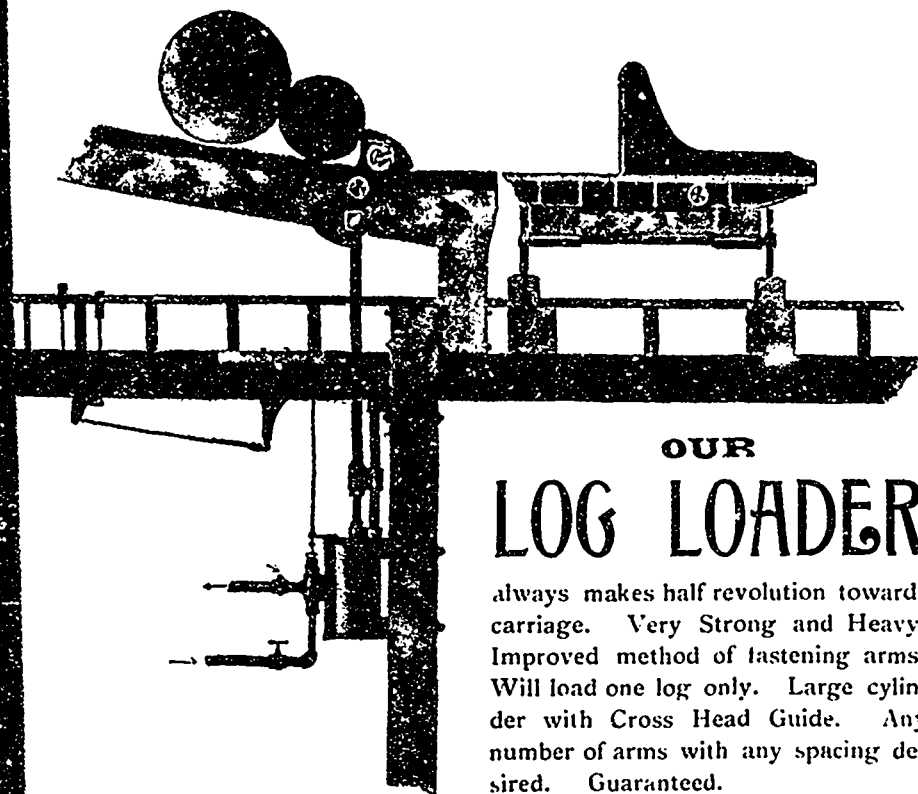
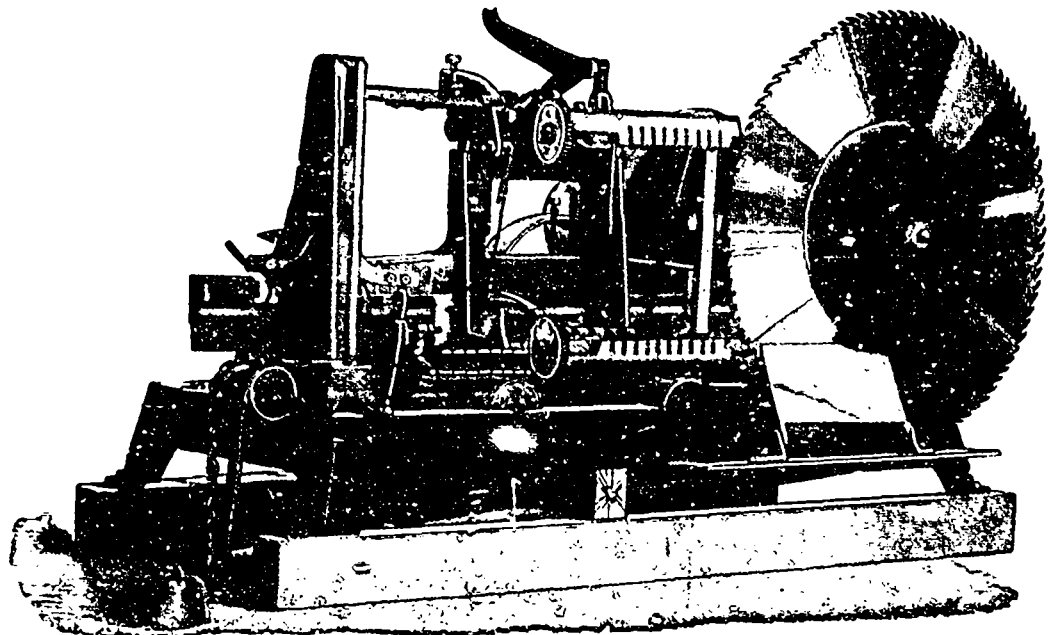
MANUFACTURERS OF

## SAW MILL AND SHINGLE MILL MACHINERY

We Manufacture the celebrated

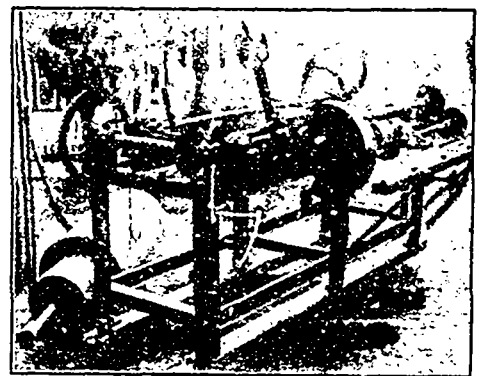
**Gravenhurst  
Boss  
Shingle  
Machine**

being used from Coast to Coast



### OUR LOG LOADER

always makes half revolution towards carriage. Very Strong and Heavy. Improved method of fastening arms. Will load one log only. Large cylinder with Cross Head Guide. Any number of arms with any spacing desired. Guaranteed.



### REGRINDING MACHINE

The above cut shows our Improved Automatic Regrinding Machine, for regrinding saws that are too heavy to a lighter gauge. It is so constructed that it must grind them to a perfectly true taper from the collar to the teeth, which is not always done with the old style of regrinding machines.

We also make six different styles of Automatic and Semi-Automatic Saw Sharpeners, Steam Niggers, Steam Kickers, Log Loaders, Automatic Saw Grinders, Saw Jointers, Knife Jointers, Saw Carriages of several different styles, Sappers, Trimmers, Rollers, etc. We are headquarters for Mill Repairs and Yacht Repairs. Charges moderate. It will pay you to deal with us. Send for catalogue.

**B. R. MOWRY & SONS**

GRAVENHURST,  
ONTARIO