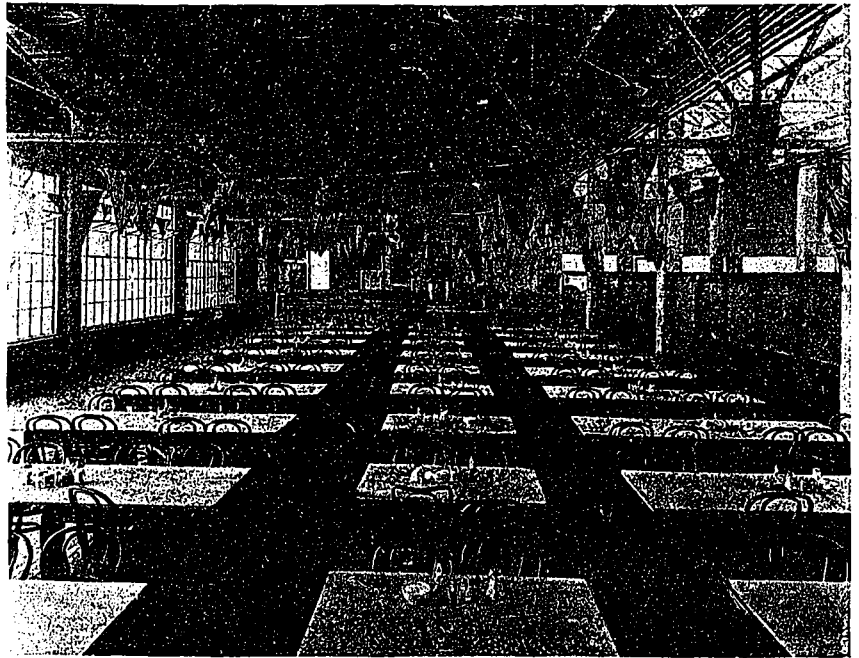


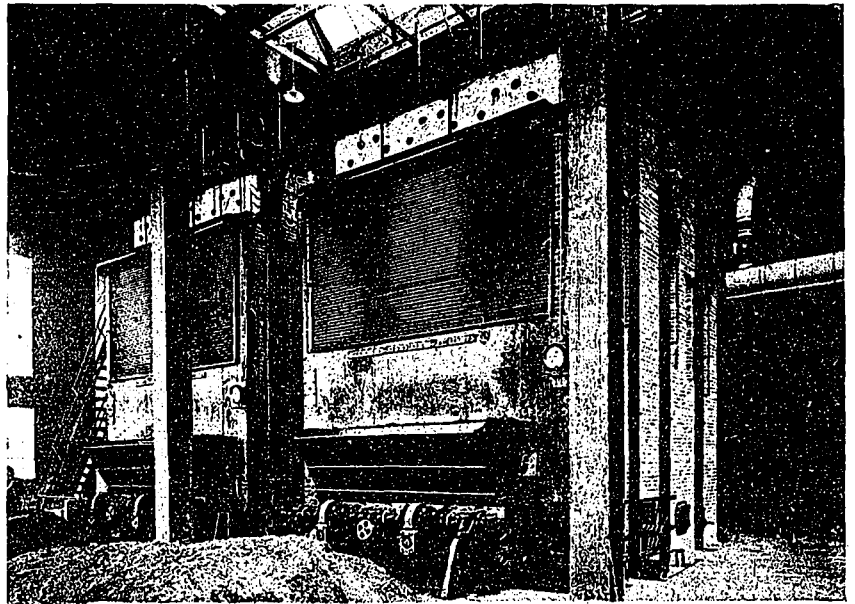
design to the main monitor, but somewhat smaller, is built the entire length of the lower projecting twenty-by-eighty-foot strips. These monitors serve as ventilators for this part of the second floor, and are designed to relieve the departments located here of excessive heat and steam from vulcanizers which are installed in this section.

The plant is at present equipped with three elevators, and provisions have been made for the installation of two others in the wells at the centre and east end of the building. Each elevator has a platform of approximately eight by eleven feet, and a capacity of six thousand pounds. These elevators are installed in towers which are built outside the main walls, and are placed to conveniently serve all parts of the factory; one being situated on the north side one hundred feet from the west end of the building, another on the same side at a position of what will eventually be one hundred feet from the east end wall; while the third is installed at the south side in the centre. These towers form twenty-foot projections on the north side, each forty feet across; and one on the south elevation of the same depth extending sixty feet across. A section twenty feet square in each of these towers is devoted to stairways and lavatories, thus affording three fire-proof stairways, as well as three lavatories on each floor. The south tower being sixty feet in length, will also allow for a twenty-foot passage way to the next building when same is erected. The lavatories are supplied with hot and cold water, with liquid soap to each bowl from a small overhead tank; and two very complete shower bathrooms are also provided for the working staff.

In addition to the factory working space, a well-equipped machine shop, wood shop, pipe shop, and tin shop, occupy the west end of the first floor; while the west end of the basement is devoted to a complete electrical shop and store room. An interesting



CAFETERIA, GOODYEAR TIRE AND RUBBER COMPANY'S NEW FACTORY.



BOILER ROOM, GOODYEAR TIRE AND RUBBER COMPANY'S NEW FACTORY.



EMPLOYEES' ENTRANCE, GOODYEAR TIRE AND RUBBER COMPANY'S NEW FACTORY.