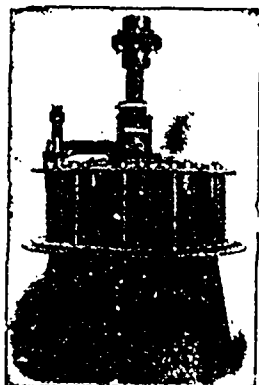


The Samson Turbine



Can be adapted to all water power requirements, and will give the very best results under all conditions.

It is a very strong and durable wheel, and is unequalled for ease of regulation.

Develops more power per inch of diameter than any other wheel, and costs less to install per horse power developed.

Our catalogue tells all about it—send for a copy.

THE WM. HAMILTON MFG. CO., Limited

350 Reid St.

Peterborough, Ont.

JAS. H. MILNES & CO.

WHOLESALE DEALERS IN

Best Grades of **STEAM COALS.**
Best Grades of **BLACKSMITHS' COALS.**
Best Grades of **FOUNDRY COKES.**

Shipments made direct from Mines to any point in Canada. Write for quotations.

Head Office: 79 KING STREET EAST
Docks: Esplanade, Foot of Yonge
TORONTO.

STANDARD TELEPHONES

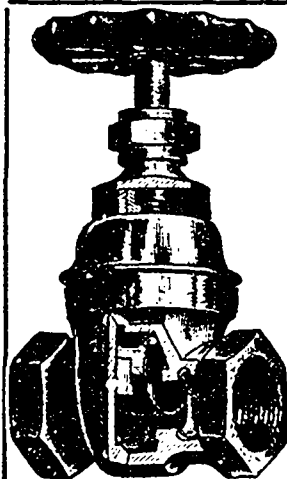
For Sale—\$5.00 each
Slightly used, but in good order.

Apply to

SALES DEPARTMENT

178 Mountain St. Montreal, Que.

Or to any Local Manager of the
BELL TELEPHONE COMPANY OF CANADA.



IF YOU WOULD SAVE MONEY

Pay a few cents more for a good Valve, and save Dollars in Steam-Fitter's bills.

Buy "KERR" Valves

and you will find a big saving during the year.

QUALITY COUNTS

THE KERR ENGINE CO., LIMITED
Manufacturers
WALKERVILLE, - ONT.

EXPANDED

The highest type of modern fireproof construction is Concrete reinforced with **EXPANDED METAL.**

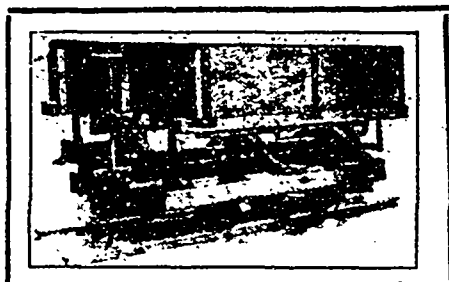
FLOORS - - ROOFS - - WALLS

Write for Catalogue and Prices.

EXPANDED METAL AND FIREPROOFING CO., LIMITED

100 King Street West, TORONTO.

METAL



Cars! Cars! Cars!

of all descriptions for
ORE, BRICK, COAL, TRAM, MINE, COKE, FOUNDRY, RAILWAY
PUSH AND HAND CARS

SPECIAL CARS CONSTRUCTED UPON RECEIPT OF SPECIFICATION
LIGHT RAILS AND SWITCHES

F. H. HOPKINS & CO., MONTREAL