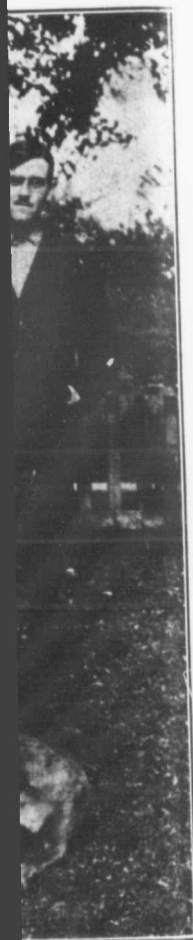


ns, an operation
ribes as follows:

swarms I collect
of brood from the
has been three
nd after I put the



s in the centre of
hatching brood, I
lony and lift it off
e the hive of super
atching eggs on the

stand where the strong hive of bees stood. I then shake about a quart of bees in front of this hive of brood, being careful not to shake the queen off. I then move the hive of bees and queen to a new stand. The field bees will return to the old stand where the eight combs full of hatching brood and one comb of hatching eggs are. This makes one of the most powerful nuclei ever made, and the bees having only one comb of larvæ to be fed,

By this system I boom both stands of bees into powerful colonies and secure a big crop at the same time."

We have presented in these pages several photographs of Mr. McEvoy and his family, and we are sure our readers will be glad to learn that the veteran is as hale and hearty as he was in the days when he travelled so much amongst them helping and encouraging by his cheerful and good natured words.



Mr. McEvoy and His Sons Amid the Bee Hives.

will feed it the best that has ever been fed and thus with hundreds of bees hatching every hour, puts this colony in the very best condition to put **abundance of royal jelly in every queen cell thus producing the best queens**, I put frames of hatching brood taken from supers on this one rearing the queens, and also frames of brood on the old colony that I moved away.

FOUL BROOD QUESTIONS ANSWERED.

William McEvoy.

1. How would you treat colonies found with foul brood at this season of the year?
Everything would depend upon the condition I found them in at this date. Where the colonies are strong in bees and