

flower form. They are shown repeated in Figs. 16 and 17. As to the use to which these designs could be put, Fig. 13 is

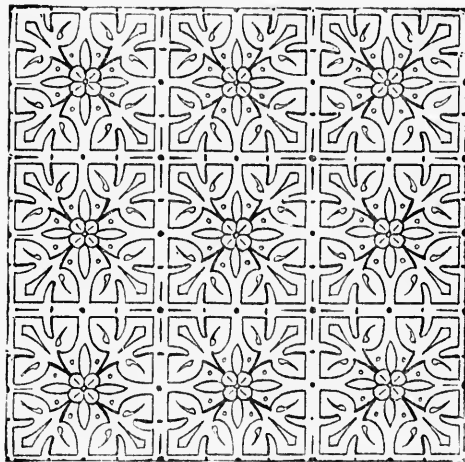


FIG. 14.

suitable for an oil-cloth or carpet; Fig. 14 for an oil-cloth or tiled floor; Fig. 16 for an oil-cloth, tiled floor or ceiling, and

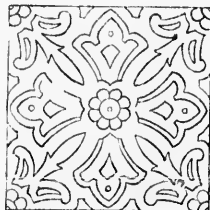
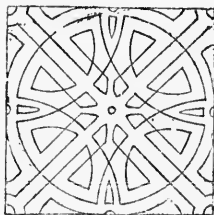


FIG. 15.

Fig. 17 for a carpet or oil-cloth. In Figs. 13 and 16 the
16

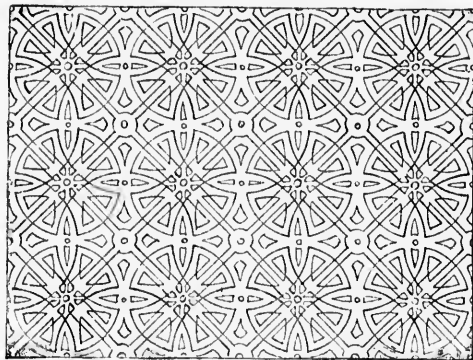


FIG. 16.

geometric plane used as a foundation is hidden so that it cannot be ascertained without a little investigation. This is

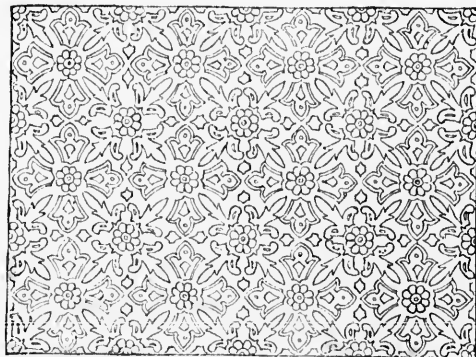


FIG. 17.

an advantage, as, in the repetition of geometric figures and