

The Kind of Coats We are Clearing at \$5.95

Four Examples Illustrated With Careful Regard for Style and Detail

We realize that the season for **selling** winter coats is rapidly passing and that these coats should be put into use at once unless their term of usefulness is to be considerably postponed. As you will readily understand we would prefer to sell them now even at a big reduction, than carry them over till fall, 1910. Nor can our customers fail to see the advantage such a course will prove to them.

It means that for the very modest sum of \$5.95, any women may purchase at this store a stylish new winter coat to save her good one and do her for a "knock-about" purposes—and yet be perfectly good for any and every particular occasion, too, if at such times she prefers to use it.

It means two good coats instead of one good coat.

A coat for best—and a coat just as good that you "don't need to care if it does get wet or splashed or rumped, it cost so little."

These illustrations show some of the styles of coats we refer to. Remember there are two months and more of rough, cold winter weather to come yet. A warm new coat will not come amiss one bit.

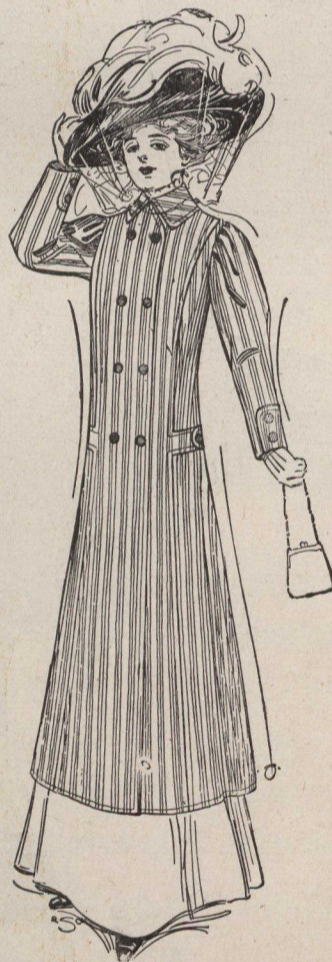
Examine these styles:—



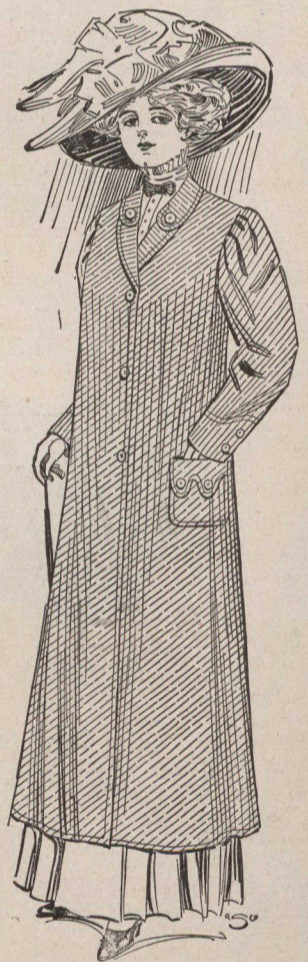
G100—A Smart Knockabout Coat, $\frac{7}{8}$ length, imported English tweed, nice soft finish, good weight, tailored pleat each side of coat on front, mannish collar, with square back, wrist with band and button, fastened with 3 buttons, and flaps to pockets. Colors of grey or green mixtures. Sizes 32 to 42..... **5.95**



G200—A good up-to-date Coat, on stylish and attractive lines, $\frac{7}{8}$ length, made of wide wale serge, semi-fitting style, strapped pockets, plain tailored collar, fastened with three buttons on front, color a good medium grey, sizes 32 to 42..... **5.95**



G300—A strictly tailored model Coat, lined to waist and sleeves, stitched band on hip, finished with button, new collar, almost college style, stitched cuffs, trimmed with buttons, $\frac{7}{8}$ length, colors grey or brown. Sizes..... **5.95**



G400—An elegant Street Coat, of new wide wale serge, novelty collar, with rounded tab effect on front, finished with bone button, stitched cuffs, with tailor-effect, two buttons on flap, that give a very stylish look to the coat, grey only. Sizes..... **5.95**

THE
ROBERT

SIMPSON

COMPANY
LIMITED

TORONTO