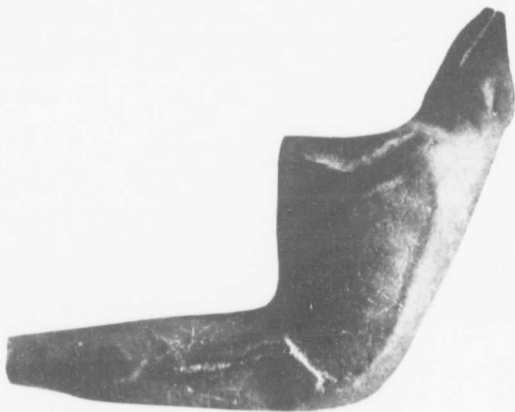


THE BEAVERTON STEMMED LIZARD PIPE.

This fine specimen was owned by Mr. George Proctor of Beaverton in 1902. Was found by him on the east shore of Lake Simcoe near Beaverton, Ontario, now known as Ethel Park. Length of stem from bowl to mouth-piece, 2 inches. Height of bowl, $1\frac{1}{2}$ inches. Height of projected head above bowl, $\frac{3}{4}$ inch. Thickness through top of bowl from side to side, 1 inch, from back to front, $\frac{3}{16}$ inches.

The broad, triangular, frog shaped head has projected eyes at the corners. The mouth is defined by a scratch. The forelegs are clasping the top of the bowl. The hind legs are extended along sides of stem and the tail extends underneath stem to nearly the mouth-piece. Length of lizard, about $3\frac{3}{4}$ inches. Cavity of



Beaverton Lizard Pipe.

bowl conical. There are some slight scratches on the surface. Material a limestone or lithographing stone (the latter material occurs as drift in this neighborhood). The extremities of forelegs expand into feet, but the hindlegs are cut off square at the ankles and no hind feet are represented. The tail extends straight as is the usual way, and is neatly worked. The surface of the pipe is smooth but not polished. I doubt if material would take a good polish. (From notes taken in 1902 by the author.) Mr. A. F. Hunter, of Barrie, in a letter of 26th March, 1902, remarks about this pipe: "In the picture (photo) of the lizard pipe the natural creases of the stone show pretty well. I am of the opinion this pipe is intended for an alligator. The granular markings on the stone are just like alligator scales, and the material was probably selected on this account. No other kind of lizard has a hide marked in this way. It is, in my opinion, another case of fitness in the choice of stone for the work intended." This pipe has not been brought to public notice before, and is the only one, so far, that has come to the author's notice, that shows projected eyes.