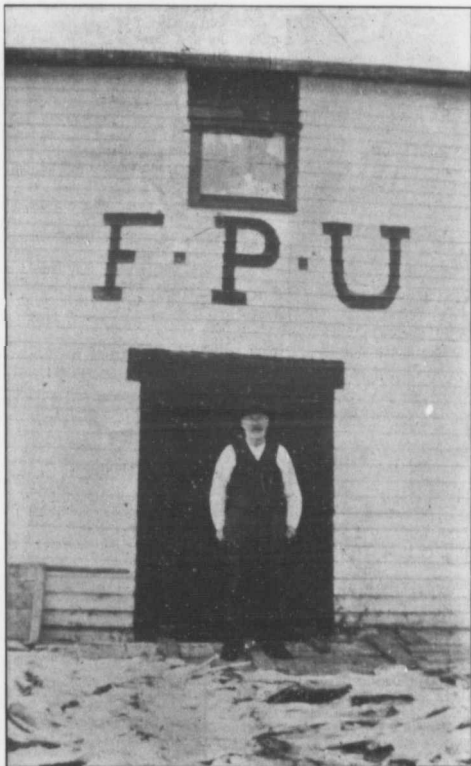


and Power Company has a paid up capital of \$50,000.00. The Union Shipbuilding Company has a paid up capital of \$25,000.00. The Trading Company has also sold Bonds to the value of \$100,000.00 and carries deposits of the members to the value of \$200,000.00.

The F. P. U. also operates a Publishing Company which publishes the Fishermen's Union organ—The Advocate—which represents another investment of \$60,000.00.

An investment of \$1,000,000.00 has subsequently

tice. The Reid Nfld. Company influences were arrayed against Port Union and our connection with their system was most unsatisfactory. A. B. Morine was given a free hand by the Executive to dislocate Port Union traffic and cut off coastal connection of the Trading Company by taking away the "Clyde" and "Dundee" from the Port Union route, which route gave Port Union connection with eighteen Union harbors operating a Union business. The "Dundee" was allowed to call at Bonavista, but prohibited



THOS. J. BURTON, BAY DE LEAU, P.B.

been made by the members of the F.P.U. in its business enterprises, and great success has resulted.

The advent to power of the Anti-Union Government, led by Sir M. P. Cashin but dominated by A. B. Morine, demonstrated to what extent some men were willing to go in order to wipe out the fishermen's investment of \$1,000,000.00 at Port Union. An attack of the most vile and unprincipled type was made upon the Trading Company in the House of Assembly by A. B. Morine, Minister of Jus-

from calling at Port Union, a distance of 20 miles from Bonavista. The "Prospero" was not permitted to call at Port Union, although Port Union had no direct connection with Green Bay or the Treaty Shore. The "Earl of Devon" was not allowed to make Port Union a port of call. The "Susu" was allowed to call once or twice; she was filled to the hatches with freight from St. John's and the Trading Company had to take piles of freight placed on the piers back to the stores, there being no space available.