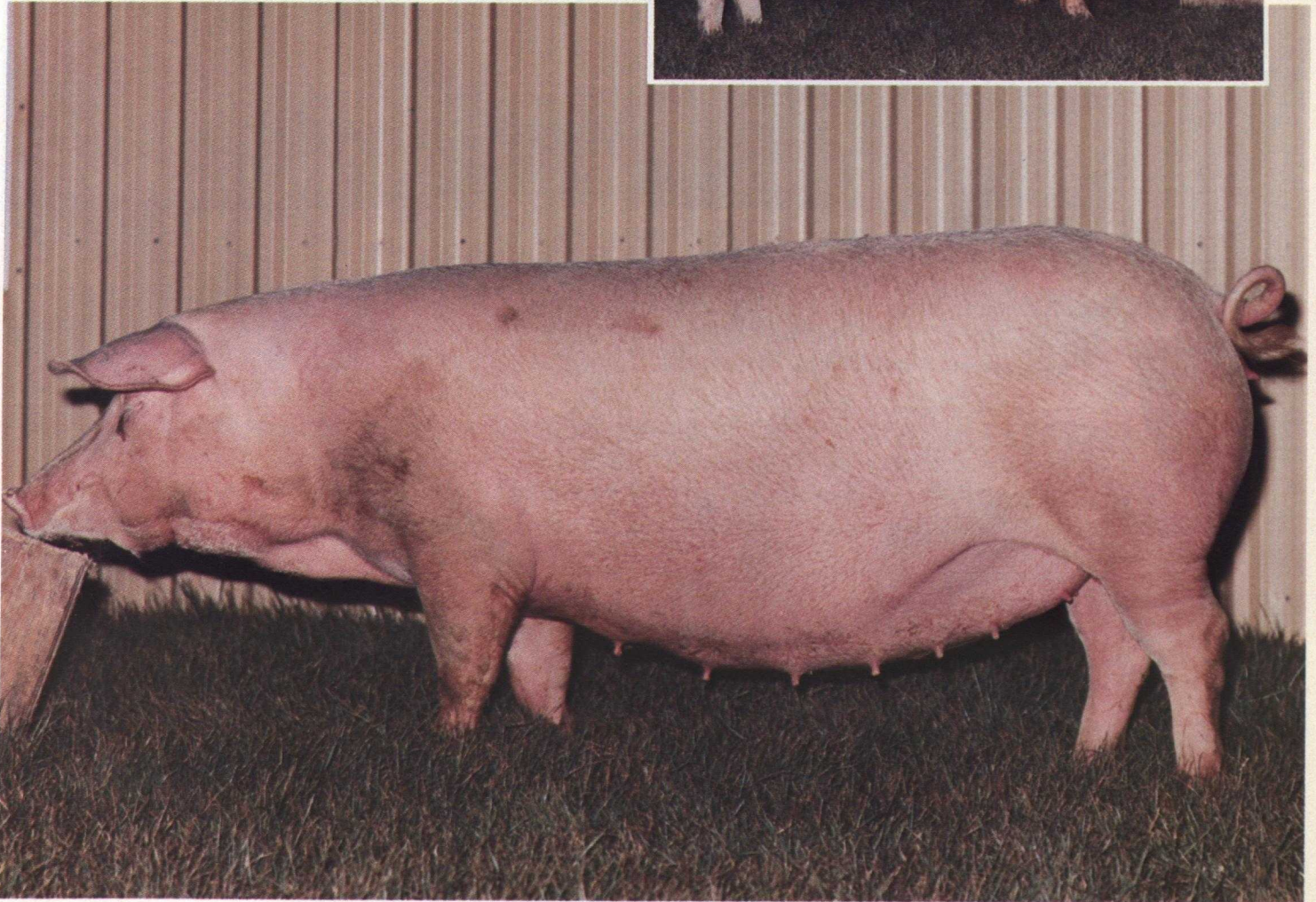
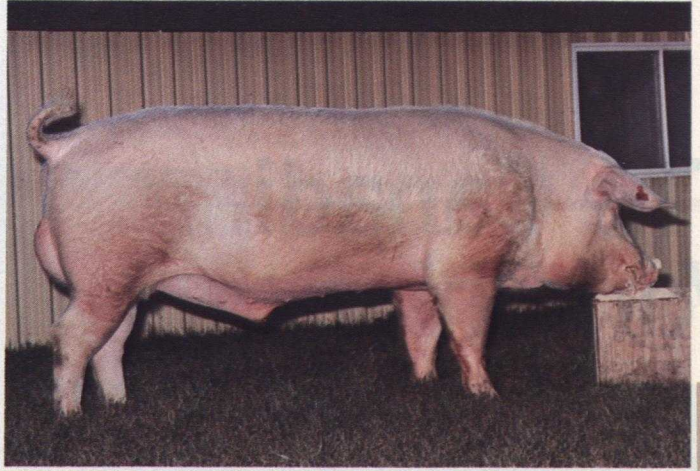


The Canadian Landrace

Landrace boar



Landrace sow

The Landrace breed originated in the Scandinavian countries, and has been further developed in Canada since its introduction in 1950. Registrations in 1984 were 7,393. The breed is noted for prolificacy and good mothering ability. The carcass is similar in merit to the Yorkshire, lean with a high proportion of ham.

The Landrace is a white breed with floppy ears, used extensively in Canada as a crossing breed and is noted as a bacon pig. The Yorkshire-Landrace crossbred female is a very popular pig among commercial swine producers.