

Inferior mortals by making it a holiday. On Wednesday the seventh game was contested, and M. Rosenthal, if we are not misinformed, obtained an undoubted advantage in the opening, which was a Ruy Lopez. Zukertort being first player. Again, however, there was a draw, making the score—Zukertort, 1; Rosenthal, 0; drawn, 6.”

The eighth game in the Rosenthal-Zukertort match was played yesterday. Rosenthal was first player, and he opened with the Ruy Lopez. At the stage reached shortly before we went to press Zukertort had the advantage.

Latest news of the great match between Rosenthal and Zukertort.

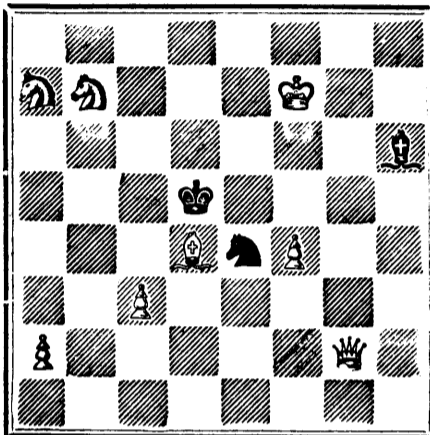
(From Land and Water.)

The eighth game in the Rosenthal-Zukertort contest, which we alluded to last week as being in favour of Zukertort, was won by him. The ninth game, fought last Monday terminated in a draw. On Wednesday the combatants abstained from playing in honour of Saint Derby. The tenth game between Zukertort and Rosenthal was played on Thursday last, and resulted in favour of the French champion—a fact which will cause a general feeling of pleasure in the chess world. The score now stands—Zukertort, 2; Rosenthal, 1; drawn, 7.

In the march number of the *Strategic* there is an obituary article upon the venerable Abbé Durand, Principal of the College of Lisieux. He was, it appears, a chessplayer, and also formerly a contributor of chess articles of much merit to the French periodicals of the day.

**PROBLEM No. 281.**

By F. Healey.  
BLACK.



WHITE

White to play and mate in three moves.

**GAME 410TH.**

**CHESS IN LONDON.**

Fourth game in the match between Dr. Zukertort and Mr. Rosenthal, played at the St. George's Chess Club, May 10, 1880.

(Ruy Lopez.)

White.—(Mr. Rosenthal.)	Black.—(Herr Zukertort.)
1. P to K 4	1. P to K 4
2. Kt to K B 3	2. Kt to Q B 3
3. B to Kt 5	3. Kt to B 3
4. P to Q 3	4. P to Q 3
5. P to B 3	5. P to Q R 3
6. B to R 4	6. P to K Kt 3
7. Q Kt to Q 2	7. B to Kt 2
8. K to B sq	8. Castles
9. Kt to Kt 3	9. P to Q Kt 4
10. B to B 2	10. P to Q 4
11. Castles	11. P to R 3
12. B to Q 2	12. B to K 3
13. P to Q R 4	13. Q to Q 3
14. Q to B sq	14. K to R 2
15. Kt takes P	15. Kt takes Kt
16. P to Q 4	16. P takes P
17. P takes Kt	17. Q takes P
18. B to B 4	18. Q to B 4
19. Kt takes P	19. Kt takes Kt
20. B takes Kt	20. Q R to Q sq
21. P takes P	21. P takes P
22. Q to K 3	22. Q takes Q
23. B takes Q	23. P to B 4
24. B to B 6	24. P to B 5
25. B to H 5	25. R to B 4
26. B to Kt 4	26. R to Q 7
27. K R to K sq	27. B to Q 2
28. B takes B	28. R takes B
29. R to R 7	29. K R to Q 4
30. P to R 3	30. B to K 4
31. R to Kt 7	31. K to Kt 2
32. P to Q Kt 3	32. K to B 3
33. K to B sq	33. K to B 4
34. P to B 4	34. P takes P

And the game was given up as drawn.

**SOLUTIONS.**

**Solution of Problem No. 279.**

White.	Black.
1. Q to Q R 3	1. K takes P
2. Q to K 7 (ch)	2. K moves
3. Q or P mates	

**Solution of Problem for Young Players No. 277.**

WHITE.	BLACK.
1. P to K Kt 5	1. P moves
2. Kt mates	

**PROBLEMS FOR YOUNG PLAYERS, No. 278.**

White.	Black.
K at K B 6	K at Q B 5
R at Q Kt 7	Pawns at Q 3 and 6
B at K Kt 2	and Q B 4
Kt at Q 8	
Pawn at Q 2	

White to play and mate in three moves.

**CARDS**—10 Lily of the Valley, 10 Scroll, 10 Engraved, 10 Transparent, 1 Model Love Letter, 1 Card Case. Name on all 15c. **WEST & CO.**, Westville, Conn.

**25** all Gold and Silver. Motto and Floral Cards 10c. **Stevens Card Co.**, Northford, Ct.

**THIS PAPER** MAY BE FOUND ON FILE AT GEO. P. ROWELL & CO'S Newspaper Advertising Bureau (10 SPRUCE STREET), WHERE ADVERTISING CONTRACTS may be made for it in **NEW YORK.**



**WELLAND CANAL.**

**NOTICE TO CONTRACTORS**

THE construction of Lock Gates advertised to be let on the 3rd of JUNE next, is unavoidably postponed to the following dates:—

Tenders will be received until

**Tuesday, the 22nd day of June next.**

Plans, specifications, &c., will be ready for examination on and after

**Tuesday, the 8th day of June.**

By Order,  
F. BRAUN,  
Secretary.

DEPT. OF RAILWAYS AND CANALS,  
Ottawa, 13th May, 1880.



**LACHINE CANAL.**

**NOTICE TO CONTRACTORS**

THE construction of Lock Gates advertised to be let on the 3rd of JUNE, next, is unavoidably postponed to the following dates:—

Tenders will be received until

**Tuesday, the 22nd day of June next.**

Plans, specifications, &c., will be ready for examination on and after

**Tuesday, the 8th day of June.**

By Order,  
F. BRAUN,  
Secretary.

Department of Railways and Canals,  
Ottawa, 13th May, 1880.



**CANADIAN PACIFIC RAILWAY.**

**Tenders for Rolling Stock.**

TENDERS are invited for furnishing the Rolling Stock required to be delivered on the Canadian Pacific Railway, within the next four years, comprising the delivery in each year of about the following, viz:—

- 20 Locomotive Engines.
- 16 First-class cars (a proportion being sleepers).
- 20 Second-class Cars, do.
- 3 Express and Baggage Cars.
- 3 Postal and Smoking Cars.
- 240 Box Freight Cars.
- 100 Flat Cars.
- 2 Wing Ploughs.
- 2 Snow Ploughs.
- 2 Flangers.
- 40 Hand Cars.

The whole to be manufactured in the Dominion of Canada and delivered on the Canadian Pacific Railway, at Fort William, or in the Province of Manitoba. Drawings, specifications and other information may be had on application at the office of the Engineer-in-Chief, at Ottawa, on and after the 15th day of MARCH next. Tenders will be received by the undersigned up to noon of THURSDAY, the 1st day of JULY next.

By Order,  
F. BRAUN,  
Secretary.

Department of Railways and Canals,  
Ottawa, 7th February, 1880.



**WELLAND CANAL.**

**Notice to Bridge-Builders.**

SEALED TENDERS, addressed to the undersigned (Secretary of Railways and Canals), and endorsed "Tender for Bridges, Welland Canal," will be received at this office until the arrival of the Western mails on TUESDAY, the 15th day of JUNE, next, for the construction of swing and stationary bridges at various places on the line of the Welland Canal. Those for highways are to be a combination of iron and wood, and those for railways purposes are to be of iron.

Plans, specifications and general conditions can be seen at this office on and after MONDAY, the 31st DAY OF MAY, next, where Forms of Tender can also be obtained. Parties tendering are expected to have a practical knowledge of works of this class, and are requested to bear in mind that tenders will not be considered unless made strictly in accordance with the printed forms, and, in the case of firms—except there are attached the actual signatures, the nature of the occupation, and residence of each member of the same; and, further, an accepted bank cheque for a sum equal to \$250 for each bridge, for which an offer is made, must accompany each Tender, which sum shall be forfeited if the party tendering declines entering into contract for the work at the rates and on the terms stated in the offer submitted. The cheque thus sent in will be returned to the respective parties whose tenders are not accepted. For the due fulfilment of the contract, the party or parties whose tender is proposed to accept will be notified that their tender is accepted subject to a deposit of five per cent. of the bulk sum of the contract—of which the sum sent in with the tender will be considered a part—to be deposited to the credit of the Receiver-General within eight days after the date of the notice. Ninety per cent. only of the progress estimates will be paid until the completion of the work.

This Department does not, however, bind itself to accept the lowest or any tender.

By Order,  
F. BRAUN,  
Secretary.

DEPT. OF RAILWAYS AND CANALS,  
Ottawa, 29th March, 1880.



**Q. M. O. AND O. RAILWAY.**

**Change of Time.**

**COMMENCING ON**

**Monday, May 3rd, 1880.**

Trains will run as follows:

	MAIL.	EXPRESS.
Leave Hochelaga for Hull.....	8.30 a.m.	5.15 p.m.
Arrive at Hull.....	12.40 p.m.	9.25 p.m.
Leave Hull for Hochelaga.....	8.20 a.m.	5.05 p.m.
Arrive at Hochelaga.....	12.30 p.m.	9.15 p.m.
	Night.	Passenger.
Leave Hochelaga for Quebec.....	3.00 p.m.	10.00 p.m.
Arrive at Quebec.....	9.00 p.m.	6.30 a.m.
Leave Quebec for Hochelaga.....	10.40 a.m.	9.30 a.m.
Arrive at Hochelaga.....	4.45 p.m.	6.30 a.m.
	Mixed.	Mixed.
Leave Hochelaga for St. Jerome..	5.30 p.m.	—
Arrive at St. Jerome.....	7.15 p.m.	—
Leave St. Jerome for Hochelaga..	—	6.45 a.m.
Arrive at Hochelaga.....	—	9.00 a.m.

(Local trains between Hull and Aylmer.)  
Trains leave Mile-End Station Seven Minutes Later.  
Magnificent Palace Cars on all Passenger Trains, and Elegant Sleeping Cars on Night Trains.  
Trains to and from Ottawa connect with Trains to and from Quebec.  
All Trains Run by Montreal Time.

GENERAL OFFICE, 13 Place d'Armes Square.  
TICKET OFFICE, 202 St. James Street.  
L. A. SENECAI,  
Gen'l Sup't.

**50** TORTOISE, Scroll, Wreath, Chromo, Motto and Floral Cards, 10c. U. S. Card Co., Northford, Ct.

**W. S. WALKER,**  
IMPORTER OF

**Diamonds, Fine Watches & Jewelry,**  
ENGLISH AND FRENCH CLOCKS,  
SILVER AND SILVER-PLATED WARE,  
No. 321 Notre Dame St., Montreal.

AN ELEGANT AUTOGRAPH ALBUM, containing About 50 finely engraved and tinted pages, bound in Gold, at 54 quotations, all postpaid, 15c. Popular Game of Authors, 15c. Clinton Bros. Clintonville, Ct.

**The Scientific Canadian**

**MECHANICS' MAGAZINE**

AND

**PATENT OFFICE RECORD,**  
A MONTHLY JOURNAL

Devoted to the advancement and diffusion of Practical Science, and the Education of Mechanics.

THE ONLY SCIENTIFIC AND MECHANICAL PAPER PUBLISHED IN THE DOMINION.

**THE BURLAND LITHOGRAPHIC CO.**

OFFICES OF PUBLICATION,

5 and 7 Bleury Street, Montreal.

G. B. BURLAND, General Manager.

F. N. BOXER, ARCHITECT & CIVIL ENGINEER, Editor

**TERMS:**

- One copy, one year, including postage.... \$2.00
- One copy, six months, including postage... 1.10

Subscriptions to be paid in ADVANCE.

The following are our advertising rates:—For one monthly insertion, 10 cts. per line; for three months, 9 cts. per line; for six months, 8 cts. per line; for one year, 7 cts. per line; one page of illustration, including one column description, \$30; half-page of illustration, including half column description, \$20; quarter-page of illustration, including quarter column description, \$10. 10 per cent. off on cash payments.

**INVENTIONS AND MACHINERY, &c.**, or other matter of an original, useful, and instructive character, and suitable for subject matter in the columns of the MAGAZINE, and not as an advertisement, will be illustrated at very reduced rates.

**REMITTING MONEY.**—All remittances of money should be in the form of postal-orders. When these are not available, send money by registered letters, checks or drafts, payable to our order. We can only undertake to become responsible for money when sent in either of the above ways.

This journal is the only Scientific and Mechanical Monthly published in Canada, and its value as an advertising medium for all matter connected with our Manufactories, Foundries, and Machine Shops, and particularly to Investors, is therefore apparent.

**MR. J. H. BATES,** Newspaper Advertising Agent, 41 PARK ROW (Times Building), NEW YORK, is authorised to contract for advertisements in the CANADIAN ILLUSTRATED NEWS at our **BEST RATES.**

**E. N. FRESHMAN & BROS.**

Advertising Agents,  
186 W. Fourth St., CINCINNATI, O.,

Are authorized to receive advertisements for this paper. Estimates furnished free upon application.  
Send two stamps for our Advertisers' Manual.

**CONTRACTS** FOR ADVERTISING IN THE **Canadian Illustrated News** MAY BE MADE AT OUR LOWEST RATES WITH **MR. E. DUNCAN SNIFFIN, ASTOR HOUSE OFFICES, NEW YORK.**

**50** Gold, Chromo, Marble, Snowflake, Wreath, Scroll, Motto, &c. Cards, with name on all, 10c. Agent's complete outfit, 60 samples, 10c. Heavy Gold plated Ring for club of 10 names. Globe Card Co., Northford Ct.

**THE COOK'S FRIEND**  
BAKING POWDER

Has become a HOUSEHOLD WORD in the land, and is a

**HOUSEHOLD NECESSITY**

in every family where Economy and Health are studied. It is used for raising all kinds of Bread, Rolls, Pastry, cakes, Griddle Cakes, &c., &c., and a small quantity used in Pie Crust, Puddings, or other Pastry, will save half the usual shortening, and make the food more digestible.



**THE COOK'S FRIEND**  
SAVES TIME,  
IT SAVES TEMPER,  
IT SAVES MONEY.  
For sale by storekeepers throughout the Dominion, and wholesale by the manufacturer.

**W. D. McLAREN, UNION MILLS,**  
17-19-52-362 55 College Street.

**British American**  
**BANK NOTE COMPANY,**  
**MONTREAL.**

Incorporated by Letters Patent.  
**Capital \$100,000.**

**General Engravers & Printers**

- Bank Notes, Bonds,
- Postage, Bill & Law Stamps,
- Revenue Stamps,
- Bills of Exchange,
- DRAFTS, DEPOSIT RECEIPTS,
- Promissory Notes, &c., &c.,
- Executed in the Best Style of Steel Plate Engraving.
- Portraits a Specialty.

G. B. BURLAND,  
President & Manager.

**THE BURLAND**  
**LITHOGRAPHIC COMPANY**

(LIMITED)

**CAPITAL \$200,000,**

GENERAL

Engravers, Lithographers, Printers

AND PUBLISHERS,

3, 5, 7, 9 & 11 ELEURY STREET,  
MONTREAL.

THIS ESTABLISHMENT has a capital equal to all the other Lithographic firms in the country, and is the largest and most complete Establishment of the kind in the Dominion of Canada, possessing all the latest improvements in machinery and appliances, comprising:—

- 12 POWER PRESSES
  - 1 PATENT LABEL GLOSSING MACHINE,
  - 1 STEAM POWER ELECTRIC MACHINE,
  - 4 PHOTOGRAPHING MACHINES,
  - 2 PHOTO-ENGRAVING MACHINES,
- Also CUTTING, PERFORATING, NUMBERING, EMBOSSING, COPPER PLATE PRINTING and all other Machinery required in a first class business.

All kinds of ENGRAVING, LITHOGRAPHING, ELECTROTYPING and TYPE PRINTING executed in the BEST STYLE

AND AT MODERATE PRICES

PHOTO-ENGRAVING and LITHOGRAPHING from pen and ink drawings A SPECIALTY.

The Company are also Proprietors and Publishers of the **CANADIAN ILLUSTRATED NEWS,**

**L'OPINION PUBLIQUE, and**

**SCIENTIFIC CANADIAN.**

A large staff of Artists, Engravers, and Skilled Workmen in every Department.

Orders by mail attended to with Punctuality; and prices the same as if given personally.

**G. B. BURLAND,**  
MANAGER.