



"MADE IN CANADA"

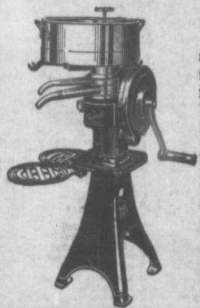
Ford Touring Car Price \$590

Your neighbor drives a Ford—why don't you? We are selling more Fords in Canada this year than ever before—because Canadians demand the best in motor car service at the lowest possible cost. The "Made in Canada" Ford is a necessity—not a luxury.

Rainabout \$440; Town Car price on application. All Ford cars are fully equipped, including electric headlights. No cars sold unequipped. Buyers of Ford cars will share in our profits if we sell 30,000 cars between August 1, 1914 and August 1, 1915. Write Ford Factory, Ford, Ontario, for catalogue F.



International Harvester Cream Separators



"AFTER you put in a cream separator and once experience the relief it gives and the work it saves, you will never go back to the old way of handling milk and cream." So says a farmer's wife who has managed a farm dairy for over twenty years, and who now has an IHC cream separator.

IHC cream separators—Dairymaid, Lily, or Primrose—fill the bill completely. They turn easily. They skim closely—leaving barely a drop of cream in a gallon of milk. They need few adjustments and none that a farmer or his wife

cannot easily make. They have the large, low supply can; the strong frame with open sanitary base; the quiet, easy-running gears oiled by an efficient splash system and the clean, classy appearance which make IHC separators such favorites wherever they are used.

IHC separators can be furnished with pulley equipment for the use of power. Belted to a small IHC engine, or to a line shaft, they give you the very best cream separating outfit it is possible to buy.

An IHC cream separator gives you the most cream, saves you the most work and lasts the longest time. See the IHC local agent who handles either Dairymaid, Lily or Primrose cream separators, or write to us for full information.

International Harvester Company of Canada, Ltd

Hamilton, Ont.
Ottawa, Ont.

London, Ont.
Quebec, P. Q.

Montreal, Que.
St. John, N. B.



Hard, Dry Soil Can't "Stick" You

This New PETER HAMILTON Stiff Tooth Cultivator works in any kind of soil, no matter how hard or dry. For weed killing and growing big crops, you need the help of a

New PETER HAMILTON Stiff Tooth Cultivator

Surpasses all other implements for Summer-fallow work. Built with extraordinary strength all through, to stand the heaviest work of deep cultivation. Has many special features of improvement, including new relief spring. Write to-day for illustrated circular.

The Peter Hamilton Co., Limited,
PETERBOROUGH,
ONT.



Sold by all
John Deere
Flow Co. dealers



Service and appearance cover every fence virtue

Into FROST FENCE is built service and appearance. These two qualities sum up every good feature of fence, because:

Service covers durability, which demands good hard wire of full size, Al extra heavy galvanizing, tight stays and laterals positively locked against all possible shift.

Appearance includes even spacing of laterals and stays, and no sign of that hall-mark of "cheap" fence—bowed stays. The fact that FROST FENCE is straight and flat when being unrolled is strong evidence of this point.

Judged by any standard, farmers and dealers alike are a unit in pronouncing solidly in favor of

Frost Fence First

WE MAKE OUR OWN WIRE—a fact that enables us to guarantee every rod of our output. There are no fence bargains except the fence that gives you permanent service at a fair price. Write for our catalogue. It goes to the heart of the fence question.

If you can't get FROST FENCE, write us direct. We may need an agent in your district.

Frost Wire Fence Co., Limited, Hamilton, Ont.