

Economy in Buying Spring Underwear

at J. N. Currie & Co's

You get "Better Quality" and "Better Fitting" Garments for same price as often asked for the lower cheap grades of sloppy makes.

Watson's Cumfy-cut Union Suits and Bloomers

are the best that's on the market. Every seam lock-stitched and perfectly finished. Compare our prices and you will see the advantage we offer.

Men's Union Suits in Light Natural Wool, Lisle and Cotton, all Watson's.

Zimmerknit and Penangle

Splendid assortment of athletic underwear for young men at 95c to \$1.50.

Men Can Buy Hats From Our Splendid Stock

and get just the block and color becoming his particular type. Our staff will advise you correctly and suggest when asked. A satisfied customer is a steady customer of this store.

Another Lot of Snappy Slippers for Ladies, Misses and Children, priced for quick sale.



Our Clothing Annex

is the busy spot in town. Drop in and you will see the reason. "Real Values" in Perfect Tailored Suits, \$18.50, \$22.50, to \$35.00.

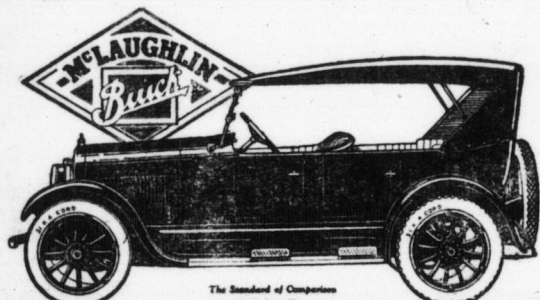
New Shirts and Ties for Dressy Young Men.

Glance At What You Can Get For 98c In Our Window This Week

Silk Camisoles beautifully trimmed with nice lace; Silk Hosiery, Plain and Fancy; Fancy Collars; Collar and Cuff Sets; Pure Thread Silk Gloves.

The Store That Serves You Well

J. N. CURRIE & CO. ||



Economical—Dependable Comfortable—Beautiful

The "Master-Four" Touring Model 23-35 Special

The McLaughlin-Buick "Master Four" Touring is its own best advertisement. Every car sold means a new friend made. Its all-round goodness commends it to everyone and its thorough dependability insures its staying sold with its owner.

A close inspection of its construction, finish and equipment and a comparison with other cars of its price will convince anyone of its unusual value. But its value does not end here, as it is continually making new records in operation cost and low cost of repairs.

It is a car that is always ready to start—and to keep going. It has proven its dependability under the hardest conditions in all parts of the world. It has the beautiful, graceful lines that grow on one and in comfort of riding and ease of operation it leaves nothing to be desired, as a ride in it will quickly prove.

Standard equipment includes massive crown fenders, drum type head and cowl lamps, bumper, combination tail and stop light, scuff plates, transmission lock, etc.

B1216

There Are 15 McLaughlin-Buick Models to Choose From

M. J. McALPINE, Dealer, Glencoe

McLAUGHLIN - BUICK

CLEARING OUT ENTIRE STOCK OF GROCERIES

FOR CASH - in 30 days

All Goods sold at Wholesale Prices and Less

Store will be vacated.

IMMEDIATE FREE DELIVERY

W. A. CURRIE
CENTRAL GROCER TELEPHONE 25

WORKING THE MOWER

Practical Instructions on Running This Useful Machine.

Give the Cutting Bar and Steel Plate Attention—Keep the Knife Sharp—Go Over the Machine Daily—Returns From Bees.

(Contributed by Ontario Department of Agriculture, Toronto.)

This machine has given splendid service to the farmers of the past and present generations. Fifty years ago the mower was a perfected machine, and the improvements since that date have not been of a revolutionary nature.

Watch the Cutting Bar.

This machine is subjected to a number of abuses, traceable to the carelessness of the average farmer. Lack of attention to dull ledger plates and knife operated over rough or stony ground. With the knife running close to the soil surface, injury from contact with gravel, sand and small stones is frequent. The watchfulness of the operator to avoid subjecting the cutter bar to injury is the best protection when the mower is in use on rough ground. The cutter bar with its numerous guards can be elevated or tilted quickly by an experienced operator and obstructions avoided. The guards should be kept tight and in perfect alignment.

Give the Steel Plate Attention.

The small steel plate that is riveted to the guard at the point where the knife edge performs the scissor movement should be kept sharp or at least not permitted to wear round. These plates, commonly known as ledger plates, become dull with use, a condition that greatly reduces the efficiency of the mower and increases the draft. A mower with dull or rounded ledger plates will stick in heavy cutting or damp grass. A sharp knife and sharp edged ledger plates means light draft for the team and clean, free cutting of the crop.

The Knife Must Be Kept Sharp.

Too much attention cannot be given to the cutter bar with its attached guards and quick moving knife. If the mower sticks at every house or at the end of the field, the look for the trouble is in the dull knife, the ledger plates, the worn guards, or the keepers that hold the knife down in place. With the new mower it will be noted that the cutting edges are sharp, that there is but little play for the knife other than as intended. In the past too little attention has been given to keeping the ledger plates sharp. With these dull, no matter how good the knife is, tough material will be drawn beneath the knife instead of being cut. In such a case the blade against the guard causing wear that gives a loose fitting knife, poor work and greatly increased draft.

Why the New Mower Cuts Best.

The experience of all is that the mower cuts better the first season than ever after. This experience is largely due to the fact that too little attention is paid to the parts that are responsible for the cutting. The wear of the section parts of the mower knife is greatest near the point. This wear, together with the grinding necessary to keep the knife sharp, changes the shape of the section considerably, and such a way as to reduce its efficiency as a cutting implement. The man doing the grinding should endeavor to keep the original shape of the section in so far as possible. Many of the emery grinders used in sharpening mower knives grind away the points of the section to a serious extent without being very much sharpened. A specially shaped emery or carborundum stone or file should be used and the work done in the farm shop. A spare knife should always be at hand in the field.

Go Over the Machine Daily.

The mower should be gone over carefully twice each day and all bolts tightened. The main bearings should be oiled at least once each hour, and the pitman bearings at least every half hour. When the mower is not in use the knife should be removed. The cutter bar should be elevated to the position in which it is used. The cutter bar should be brushed over all parts that are likely to rust. Don't use paint oils. The mower, like the binder, to give the best service, should be given good care.—L. Stevenson, Sec., Dept. of Agriculture.

Returns From Bees.

Good returns are obtained from keeping bees in Canada. The conditions in many parts of the country being particularly favorable for honey production. Yet much uncertainty exists, and misconceptions have arisen as to the returns to be expected. One sometimes hears that a colony of bees has produced in one season four or five hundred pounds of honey. Such yields, however, are exceptional, and are the result of a combination of fortunate circumstances, abundant flowers of alisk and white clover, fireweed, or other important honey plants, a particularly industrious colony, a well trained and experienced beekeeper, and, above all, favorable weather. They cannot be obtained from every hive, nor can they be repeated year after year. Sometimes a year of failure follows a year of plenty.

To get reliable figures it is necessary to average the returns from the colonies in the apiary for a number of years. The latest figures show that the average annual yield of honey has varied from 18 pounds per colony in the least profitable apiary to 133 pounds per colony in the most profitable apiary. The average annual production for all the apiaries was 82 pounds per colony, which is high enough to make a satisfactory profit. These figures indicate the importance of good management, the returns of only 18 pounds having been due to inexperience.



For Summer

at New Ladies' Wear and Millinery Store

New Summer Suits, Coats & Dresses. Blouses in Every Material. An assortment that will more than please you always on hand. We handle Northway Garments and Helena Dresses. Phone 55 r

Mrs. W. A. Currie

Main St. - Glencoe

COUNTER CHECK BOOKS

The Transcript is agent for the Appleford line—a better grade book and at the lowest price. Before you give your order to any travelling agent, phone 15. There is a tendency among some of the check book firms toward higher prices in the near future; however, we have been instructed to accept orders at present prices for delivery any time in the next three months. Look up your supply and if you will require more in the next six months, give your local agent the order.

J. A. RAEBURN

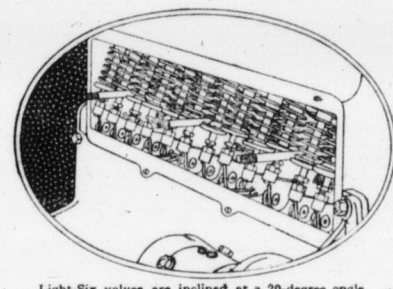
Contractor for

OIL, WATER AND GAS DRILLING

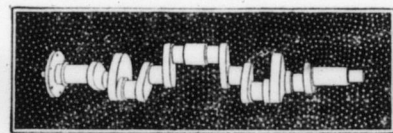
All kinds of Pumps and Pipe Supplies. Up-to-date Drilling Rig at your service.

GORE CONCESSION, EKFRID.

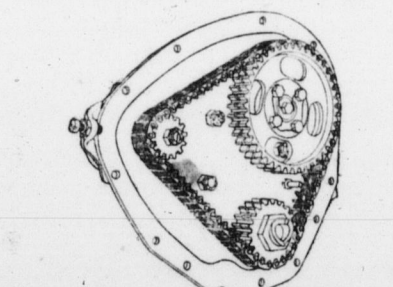
The mechanical refinements of a high-priced car—yet it sells for \$1375



Light-Six valves are inclined at a 20-degree angle, which position increases power and contributes unusual quietness of operation.

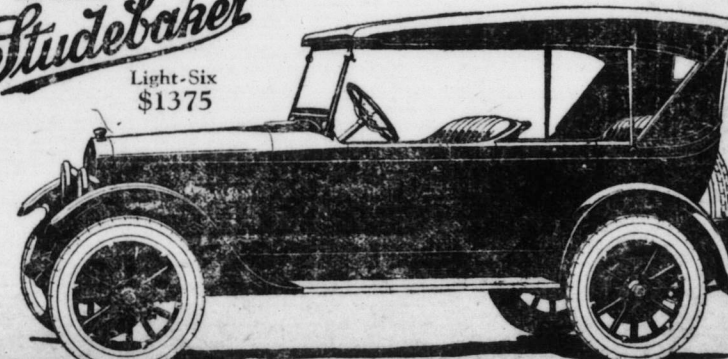


Vibration is practically eliminated in the Light-Six due to the perfect engine balance—achieved through machining the crankshaft and connecting rods on all surfaces. The next car in price to do this sells for nearly \$4000.



A silent chain, running in a constant spray of oil, takes the place of the usual timing gears, and thereby contributes to the quietness of the Light-Six motor.

"Built-in-Canada" **Studebaker** Light-Six \$1375



THIS IS A STUDEBAKER YEAR

MEAT OF QUALITY

(Fresh, Cured, and Salt)

At Reasonable Prices

We Invite Your Patronage Phone orders promptly delivered.

W. J. CORNFOT

Successor to J. D. Smith Phone 73

Massey-Harris CREAM SEPARATOR

Easy to fill. Easy to turn. Easy to clean. Easy Terms. Safe and Durable. See one before buying.

D. M. McKellar

J. B. COUGH & SON
Furniture Dealers
Funeral Directors
MAIN STREET - GLENCOE
Phone day 23, night 100

Chas. Dean
Funeral Director
Residence, Brick House,
Corner Main St. and Apple Road
Phone 76 - GLENCOE

J. A. ROBINSON & SON
Funeral Directors
HANDSOME MOTOR AND HORSE SERVICE

Hand-made Walnut, Oak and Chestnut Finished Caskets. We also keep the best Factory Caskets and Vaults in stock. Phone 155 - Newbury, Ont.

MODELS AND PRICES—(c.o.b. Walkerville, Ont.—Exclusive of taxes)			
LIGHT-SIX 5-Pass., 117" W. B. 40 H. P.	SPECIAL-SIX 5-Pass., 119" W. B. 50 H. P.	BIG-SIX 7-Pass., 124" W. B. 50 H. P.	
Touring.....\$1375	Touring.....\$1795	Touring.....\$2425	
Roadster (3-Pass.) 1375	Roadster (3-Pass.) 1760	Speedster (5-Pass.) 2550	
Coupe-Roadster (2-Pass.) 1775	Coupe (4-Pass.) 2750	Coupe (5-Pass.) 3475	
Sedan.....2225	Sedan.....3950	Sedan.....3750	

Terms to Meet Your Convenience

WM. McCALLUM
DEALER - GLENCOE