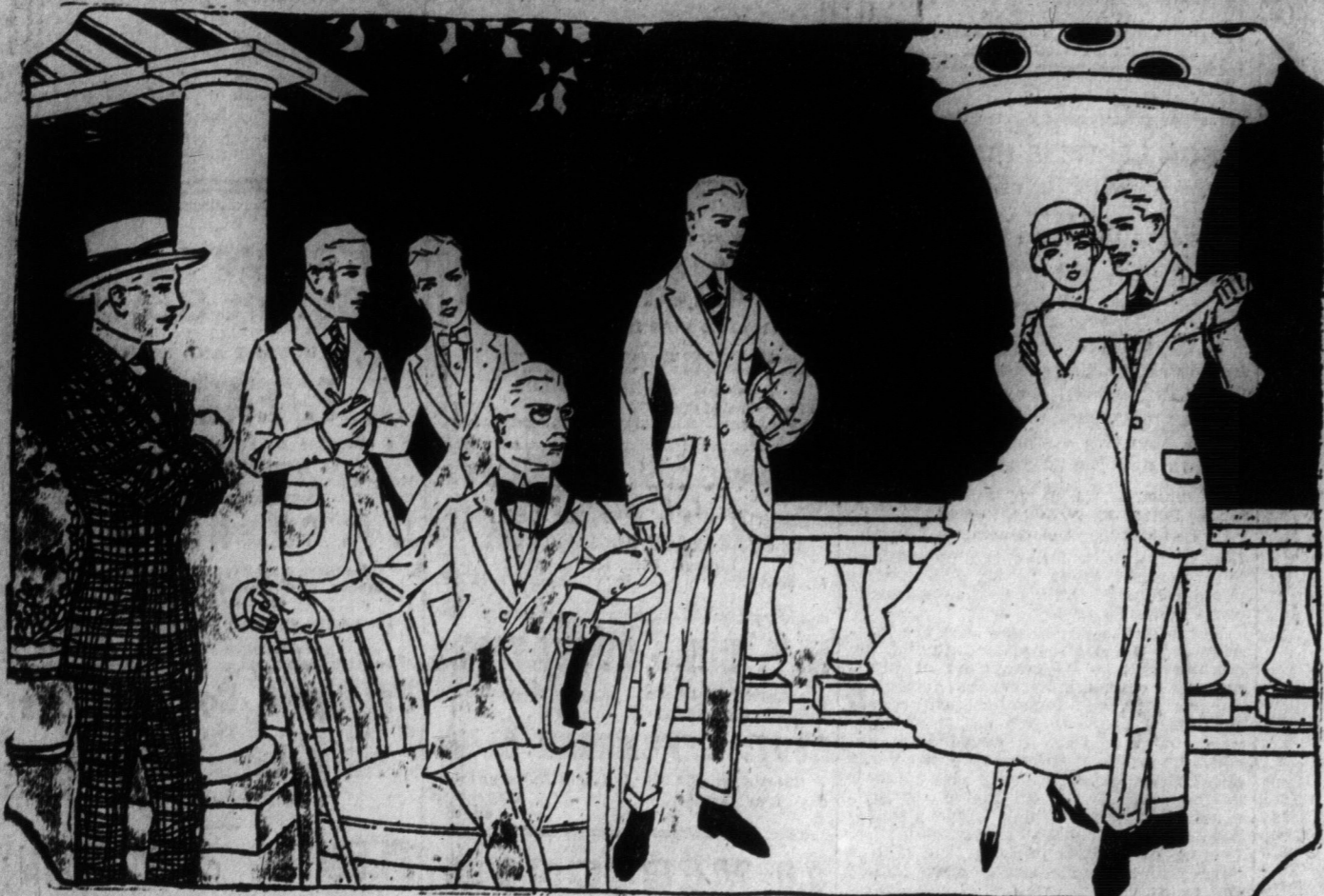


These Goods On Sale Today
Store Open From 8.30 a.m. to 5.30 p.m.

THE ROBERT SIMPSON COMPANY LIMITED

Smart Apparel for the Family at Interesting Prices Today



When Style, Comfort and Economy Are All Considered---Simpson's Men's Store is the Place at Which to Make Your Purchases.

Men's Dependable \$15 Suits

In a variety of English tweeds and worsteds, in the new shades and in attractive patterns, made in the season's new models for young men, and more conservative style for older men. Single-breasted vest, plain or cuff trousers. Sizes 34 to 44. At **15.00**

PATCH POCKET SUIT.

New single-breasted soft roll sacque style, with patch pocket, with three buttons, new style vest and correctly cut trousers, good quality English tweed, in brown, with small check pattern. Sizes 36 to 44. At **18.00**

SUIT AT \$22.00.

All wool English tweed, light gray pattern, single-breasted sacque style. Sizes 36 to 44. At **22.00**

Men's 50c and 65c Negligee Shirts for 35c

In the lot are blue, blacks, helio and tan, hairline and cluster stripes; laundered cuffs, coat style. Sizes 13 1/2 to 16 1/2. Regular 50c and 65c. Wednesday **35**

35c BALBRIGGAN UNDERWEAR AT 25c.

Men's Underwear, natural shade, shirts and drawers. Sizes 34 to 44. Special **25**

50c ATHLETIC UNDERWEAR AT 39c.

Men's Underwear in fine white nainsook, short sleeves, knee length drawers. Sizes 34 to 44. Regular 50c. Wednesday **39**

Men's Two-piece Cotton Bathing Suits, navy, trimmed with white or cardinal. Sizes 32 to 44. Special **75**

Pocket Periscopes

Three out of four of our soldiers add one of these Periscopes to their kits before going to France, with a considerable gain in safety and effectiveness. Every soldier should have one. Here is a present your soldier friend will value. Cased in leather **3.40**
 Optical Dep., 2nd Floor.

Boys' Yoke Norfolk Suits \$4.29

Single-breasted model, plain front, with side and breast pockets, yoked back with pleats to belt, pants full cut, English and Canadian tweeds, for summer wear, in light gray, herringbone and mixed weaves. Sizes 25 to 34. Wednesday **4.29**

BOYS' OUTING BLOOMERS

Khaki drill, strap and buckle at knee. Sizes 25 to 34. Price **1.00**
 Another grade. Sizes 25 to 35. Price **1.00**

BOYS' SPORT SHIRTWAISTS

Wide sport collar, that can be fastened up close under the chin. Wide range of stripes and plain cream, white and blue, tennis linens, Madras, zephyrs and chambrays, 6 to 15 years. Sizes 11 to 13 inches **1.00**

Handkerchiefs

Men's Pure Linen, 2 for 25c, 15c, 3 for 50c, each 25c, 35c and 50c.

Women's Pure Linen, 4 for 25c, 3 for 24c, each 10c, 12 1/2c, 15c, 20c, 25c and 35c.

Men's Mercerized, colored border, 4 for 25c and 3 for 25c.

Boys' Colored Border, 5 for 15c and 4 for 24c.

Boys' Irish Lawn, 6 for 25c and 3 for 29c.

Men's Mercerized Khaki, 4 for 25c, each 10c.

Men's Silk Khaki at, each, 65c and \$1.00.

Boys' and Girls' Colored Border, 6 for 13c, 3 for 10c and 6 for 25c.

Women's Colored Border, 3 for 25c, 2 for 25c, each 15c, 25c to 40c.

Women's Pure Irish Linen, corner embroidered, 25c to \$1.50.

Women's Pure Linen, hand-made Armenian lace edges, at \$1.00, \$1.25, \$1.35 to \$1.75 each.

Women's Pure Linen, with Madras hand work, each, 35c, 50c and \$1.35.

Women's Maltese Lace and Other Lace Handkerchiefs, each 75c, \$1.00 and \$1.35.

Pure Irish Linen Handkerchiefs. Regular 10c, Wednesday, 5c for **34**

Women's Long Silk Gloves, for summer wear; 14-button length; thread silk; double finger tips; black, white, tan, gray, pongee, champagne, navy, lavender, sage, pink, cream and white with black points or black with white points. Sizes 5 1/2 to 8. **1.00**

Women's Long Lisle Thread Gloves, mousquetaire style; black, white and tan **75**

Women's Long Silk Gloves, for summer wear; 14-button length; thread silk; double finger tips; black, white, tan, gray, pongee, champagne, navy, lavender, sage, pink, cream and white with black points or black with white points. Sizes 5 1/2 to 8. **1.00**

Women's Long Lisle Thread Gloves, mousquetaire style; black, white and tan **75**

Women's Long Silk Gloves, for summer wear; 14-button length; thread silk; double finger tips; black, white, tan, gray, pongee, champagne, navy, lavender, sage, pink, cream and white with black points or black with white points. Sizes 5 1/2 to 8. **1.00**

Women's Long Lisle Thread Gloves, mousquetaire style; black, white and tan **75**

Women's Long Silk Gloves, for summer wear; 14-button length; thread silk; double finger tips; black, white, tan, gray, pongee, champagne, navy, lavender, sage, pink, cream and white with black points or black with white points. Sizes 5 1/2 to 8. **1.00**

Women's Long Lisle Thread Gloves, mousquetaire style; black, white and tan **75**

Women's Long Silk Gloves, for summer wear; 14-button length; thread silk; double finger tips; black, white, tan, gray, pongee, champagne, navy, lavender, sage, pink, cream and white with black points or black with white points. Sizes 5 1/2 to 8. **1.00**

Women's Long Lisle Thread Gloves, mousquetaire style; black, white and tan **75**

Women's Long Silk Gloves, for summer wear; 14-button length; thread silk; double finger tips; black, white, tan, gray, pongee, champagne, navy, lavender, sage, pink, cream and white with black points or black with white points. Sizes 5 1/2 to 8. **1.00**

Women's Long Lisle Thread Gloves, mousquetaire style; black, white and tan **75**

Women's Long Silk Gloves, for summer wear; 14-button length; thread silk; double finger tips; black, white, tan, gray, pongee, champagne, navy, lavender, sage, pink, cream and white with black points or black with white points. Sizes 5 1/2 to 8. **1.00**

Women's Long Lisle Thread Gloves, mousquetaire style; black, white and tan **75**

Women's Long Silk Gloves, for summer wear; 14-button length; thread silk; double finger tips; black, white, tan, gray, pongee, champagne, navy, lavender, sage, pink, cream and white with black points or black with white points. Sizes 5 1/2 to 8. **1.00**

Women's Long Lisle Thread Gloves, mousquetaire style; black, white and tan **75**

Women's Long Silk Gloves, for summer wear; 14-button length; thread silk; double finger tips; black, white, tan, gray, pongee, champagne, navy, lavender, sage, pink, cream and white with black points or black with white points. Sizes 5 1/2 to 8. **1.00**

Women's Long Lisle Thread Gloves, mousquetaire style; black, white and tan **75**

Women's Long Silk Gloves, for summer wear; 14-button length; thread silk; double finger tips; black, white, tan, gray, pongee, champagne, navy, lavender, sage, pink, cream and white with black points or black with white points. Sizes 5 1/2 to 8. **1.00**

Women's Long Lisle Thread Gloves, mousquetaire style; black, white and tan **75**

Women's Long Silk Gloves, for summer wear; 14-button length; thread silk; double finger tips; black, white, tan, gray, pongee, champagne, navy, lavender, sage, pink, cream and white with black points or black with white points. Sizes 5 1/2 to 8. **1.00**

Women's Long Lisle Thread Gloves, mousquetaire style; black, white and tan **75**

Women's Long Silk Gloves, for summer wear; 14-button length; thread silk; double finger tips; black, white, tan, gray, pongee, champagne, navy, lavender, sage, pink, cream and white with black points or black with white points. Sizes 5 1/2 to 8. **1.00**

Women's Long Lisle Thread Gloves, mousquetaire style; black, white and tan **75**

Women's Long Silk Gloves, for summer wear; 14-button length; thread silk; double finger tips; black, white, tan, gray, pongee, champagne, navy, lavender, sage, pink, cream and white with black points or black with white points. Sizes 5 1/2 to 8. **1.00**

Women's Long Lisle Thread Gloves, mousquetaire style; black, white and tan **75**

Women's Long Silk Gloves, for summer wear; 14-button length; thread silk; double finger tips; black, white, tan, gray, pongee, champagne, navy, lavender, sage, pink, cream and white with black points or black with white points. Sizes 5 1/2 to 8. **1.00**

Women's Long Lisle Thread Gloves, mousquetaire style; black, white and tan **75**

Women's Long Silk Gloves, for summer wear; 14-button length; thread silk; double finger tips; black, white, tan, gray, pongee, champagne, navy, lavender, sage, pink, cream and white with black points or black with white points. Sizes 5 1/2 to 8. **1.00**

Today's Specials in Gloves and Hosiery

50c Silk Boot Hose at 29c

Women's Hose, manufacturers' "seconds"; white and a variety of wanted colors. Regular 50c. Cannot fill phone orders. Wednesday **29**

Women's Black Lisle Hose, barbriggan sole. Wednesday, 39c, 3 pairs \$1.10.

Girls' 1-1 Ribbed Cotton Stockings, white and black. Sizes 5 1/2 to 10. Wednesday **25**

Women's Long Silk Gloves, for summer wear; 14-button length; thread silk; double finger tips; black, white, tan, gray, pongee, champagne, navy, lavender, sage, pink, cream and white with black points or black with white points. Sizes 5 1/2 to 8. **1.00**

Women's Long Lisle Thread Gloves, mousquetaire style; black, white and tan **75**

Women's Long Silk Gloves, for summer wear; 14-button length; thread silk; double finger tips; black, white, tan, gray, pongee, champagne, navy, lavender, sage, pink, cream and white with black points or black with white points. Sizes 5 1/2 to 8. **1.00**

Women's Long Lisle Thread Gloves, mousquetaire style; black, white and tan **75**

Women's Long Silk Gloves, for summer wear; 14-button length; thread silk; double finger tips; black, white, tan, gray, pongee, champagne, navy, lavender, sage, pink, cream and white with black points or black with white points. Sizes 5 1/2 to 8. **1.00**

Women's Long Lisle Thread Gloves, mousquetaire style; black, white and tan **75**

Women's Long Silk Gloves, for summer wear; 14-button length; thread silk; double finger tips; black, white, tan, gray, pongee, champagne, navy, lavender, sage, pink, cream and white with black points or black with white points. Sizes 5 1/2 to 8. **1.00**

Women's Long Lisle Thread Gloves, mousquetaire style; black, white and tan **75**

Women's Long Silk Gloves, for summer wear; 14-button length; thread silk; double finger tips; black, white, tan, gray, pongee, champagne, navy, lavender, sage, pink, cream and white with black points or black with white points. Sizes 5 1/2 to 8. **1.00**

Women's Long Lisle Thread Gloves, mousquetaire style; black, white and tan **75**

Women's Long Silk Gloves, for summer wear; 14-button length; thread silk; double finger tips; black, white, tan, gray, pongee, champagne, navy, lavender, sage, pink, cream and white with black points or black with white points. Sizes 5 1/2 to 8. **1.00**

Women's Long Lisle Thread Gloves, mousquetaire style; black, white and tan **75**

Women's Long Silk Gloves, for summer wear; 14-button length; thread silk; double finger tips; black, white, tan, gray, pongee, champagne, navy, lavender, sage, pink, cream and white with black points or black with white points. Sizes 5 1/2 to 8. **1.00**

Women's Long Lisle Thread Gloves, mousquetaire style; black, white and tan **75**

Women's Long Silk Gloves, for summer wear; 14-button length; thread silk; double finger tips; black, white, tan, gray, pongee, champagne, navy, lavender, sage, pink, cream and white with black points or black with white points. Sizes 5 1/2 to 8. **1.00**

Women's Long Lisle Thread Gloves, mousquetaire style; black, white and tan **75**

Women's Long Silk Gloves, for summer wear; 14-button length; thread silk; double finger tips; black, white, tan, gray, pongee, champagne, navy, lavender, sage, pink, cream and white with black points or black with white points. Sizes 5 1/2 to 8. **1.00**

Women's Long Lisle Thread Gloves, mousquetaire style; black, white and tan **75**

Women's Long Silk Gloves, for summer wear; 14-button length; thread silk; double finger tips; black, white, tan, gray, pongee, champagne, navy, lavender, sage, pink, cream and white with black points or black with white points. Sizes 5 1/2 to 8. **1.00**

Women's Long Lisle Thread Gloves, mousquetaire style; black, white and tan **75**

Women's Long Silk Gloves, for summer wear; 14-button length; thread silk; double finger tips; black, white, tan, gray, pongee, champagne, navy, lavender, sage, pink, cream and white with black points or black with white points. Sizes 5 1/2 to 8. **1.00**

Women's Long Lisle Thread Gloves, mousquetaire style; black, white and tan **75**

Women's Long Silk Gloves, for summer wear; 14-button length; thread silk; double finger tips; black, white, tan, gray, pongee, champagne, navy, lavender, sage, pink, cream and white with black points or black with white points. Sizes 5 1/2 to 8. **1.00**

Women's Long Lisle Thread Gloves, mousquetaire style; black, white and tan **75**

Women's Long Silk Gloves, for summer wear; 14-button length; thread silk; double finger tips; black, white, tan, gray, pongee, champagne, navy, lavender, sage, pink, cream and white with black points or black with white points. Sizes 5 1/2 to 8. **1.00**

Women's Long Lisle Thread Gloves, mousquetaire style; black, white and tan **75**

Women's Long Silk Gloves, for summer wear; 14-button length; thread silk; double finger tips; black, white, tan, gray, pongee, champagne, navy, lavender, sage, pink, cream and white with black points or black with white points. Sizes 5 1/2 to 8. **1.00**

Women's Long Lisle Thread Gloves, mousquetaire style; black, white and tan **75**

Women's Long Silk Gloves, for summer wear; 14-button length; thread silk; double finger tips; black, white, tan, gray, pongee, champagne, navy, lavender, sage, pink, cream and white with black points or black with white points. Sizes 5 1/2 to 8. **1.00**

Women's Long Lisle Thread Gloves, mousquetaire style; black, white and tan **75**

Women's Long Silk Gloves, for summer wear; 14-button length; thread silk; double finger tips; black, white, tan, gray, pongee, champagne, navy, lavender, sage, pink, cream and white with black points or black with white points. Sizes 5 1/2 to 8. **1.00**

Women's Long Lisle Thread Gloves, mousquetaire style; black, white and tan **75**

Women's Long Silk Gloves, for summer wear; 14-button length; thread silk; double finger tips; black, white, tan, gray, pongee, champagne, navy, lavender, sage, pink, cream and white with black points or black with white points. Sizes 5 1/2 to 8. **1.00**

Women's Long Lisle Thread Gloves, mousquetaire style; black, white and tan **75**

Women's Long Silk Gloves, for summer wear; 14-button length; thread silk; double finger tips; black, white, tan, gray, pongee, champagne, navy, lavender, sage, pink, cream and white with black points or black with white points. Sizes 5 1/2 to 8. **1.00**

Women's Long Lisle Thread Gloves, mousquetaire style; black, white and tan **75**

Women's Long Silk Gloves, for summer wear; 14-button length; thread silk; double finger tips; black, white, tan, gray, pongee, champagne, navy, lavender, sage, pink, cream and white with black points or black with white points. Sizes 5 1/2 to 8. **1.00**

Reduced Prices Today on Boots and Shoes From Our Regular Stock for Immediate Wear

200 PAIRS MEN'S CALF BUTTON BOOTS, \$3.35.
 Made on English recede toe; double weight, oak tanned soles; gunmetal calf, button boots, with calf upper; low flat heels. Sizes 6 to 11. Today's market value \$4.50. Wednesday **3.35**

MEN'S WHITE CANVAS OXFORDS.
 100 pairs, British made, straight lace style, made of heavy white duck, with black corrugated rubber soles. Sizes 7 to 11. Regular 90c. Wednesday **59**

WOMEN'S DOROTHY DODD COLONIALS, \$2.49.
 300 pairs Women's Patent Colt Colonial and Strap Slippers, with plain black cloth, and patent heel foxings. Goodyear welt soles, leather Spanish heels; made on this season's best shape; trimmed with neat black jet button ornament; widths C, D, E. Sizes 2 1/2 to 7. Regular \$4.50. Wednesday **2.49**

GIRLS' ROMAN SANDALS.
 Made of white duck; seven straps; on College Girl toe shape; flexible McKay sewn soles; low heels; neat tailored bows. Sizes 8 to 10 1/2, \$1.45; sizes 11 to 2, \$1.65.

BAREFOOT SANDALS.
 With welt and stitched down soles, in tan, black and white. From 59c to \$1.45.

NEW TAFFETA SUITS, \$22.95.
 Another lot of smartly tailored taffetas, in assorted styles; black and navy only. Special Wash Suits **22.95**

WOMEN'S COTTON SUMMER FROCKS
 Sports Frocks, \$2.95—Made in a fine cotton fabric, with white skirt and striped middie coat effect; belted or other styles, in plain pink, cadet, tan or white, in smartly tailored styles. Sizes 22 to 42. Special **2.95**

WOMEN'S IMPORTED SILK SKIRTS, \$12.50 AND \$15.00.
 The newest styles and pretty combinations of plaids, checks or stripes in black and white, rose, amethyst, green, navy or wine; also overlaid or striped; made with extra fullness and beautifully matched gored; wide belt. Were \$16.50 to \$18.50. Wednesday, \$12.50; were \$20.00 to \$25.00, Wednesday, \$15.00.

NEW TAFFETA SUITS, \$22.95.
 Another lot of smartly tailored taffetas, in assorted styles; black and navy only. Special Wash Suits **22.95**

WOMEN'S COTTON SUMMER FROCKS
 Sports Frocks, \$2.95—Made in a fine cotton fabric, with white skirt and striped middie coat effect; belted or other styles, in plain pink, cadet, tan or white, in smartly tailored styles. Sizes 22 to 42. Special **2.95**

WOMEN'S IMPORTED SILK SKIRTS, \$12.50 AND \$15.00.
 The newest styles and pretty combinations of plaids, checks or stripes in black and white, rose, amethyst, green, navy or wine; also overlaid or striped; made with extra fullness and beautifully matched gored; wide belt. Were \$16.50 to \$18.50. Wednesday, \$12.50; were \$20.00 to \$25.00, Wednesday, \$15.00.

NEW TAFFETA SUITS, \$22.95.
 Another lot of smartly tailored taffetas, in assorted styles; black and navy only. Special Wash Suits **22.95**

WOMEN'S COTTON SUMMER FROCKS
 Sports Frocks, \$2.95—Made in a fine cotton fabric, with white skirt and striped middie coat effect; belted or other styles, in plain pink, cadet, tan or white, in smartly tailored styles. Sizes 22 to 42. Special **2.95**

WOMEN'S IMPORTED SILK SKIRTS, \$12.50 AND \$15.00.
 The newest styles and pretty combinations of plaids, checks or stripes in black and white, rose, amethyst, green, navy or wine; also overlaid or striped; made with extra fullness and beautifully matched gored; wide belt. Were \$16.50 to \$18.50. Wednesday, \$12.50; were \$20.00 to \$25.00, Wednesday, \$15.00.

NEW TAFFETA SUITS, \$22.95.
 Another lot of smartly tailored taffetas, in assorted styles; black and navy only. Special Wash Suits **22.95**

WOMEN'S COTTON SUMMER FROCKS
 Sports Frocks, \$2.95—Made in a fine cotton fabric, with white skirt and striped middie coat effect; belted or other styles, in plain pink, cadet, tan or white, in smartly tailored styles. Sizes 22 to 42. Special **2.95**

WOMEN'S IMPORTED SILK SKIRTS, \$12.50 AND \$15.00.
 The newest styles and pretty combinations of plaids, checks or stripes in black and white, rose, amethyst, green, navy or wine; also overlaid or striped; made with extra fullness and beautifully matched gored; wide belt. Were \$16.50 to \$18.50. Wednesday, \$12.50; were \$20.00 to \$25.00, Wednesday, \$15.00.

NEW TAFFETA SUITS, \$22.95.
 Another lot of smartly tailored taffetas, in assorted styles; black and navy only. Special Wash Suits **22.95**

WOMEN'S COTTON SUMMER FROCKS
 Sports Frocks, \$2.95—Made in a fine cotton fabric, with white skirt and striped middie coat effect; belted or other styles, in plain pink, cadet, tan or white, in smartly tailored styles. Sizes 22 to 42. Special **2.95**

WOMEN'S IMPORTED SILK SKIRTS, \$12.50 AND \$15.00.
 The newest styles and pretty combinations of plaids, checks or stripes in black and white, rose, amethyst, green, navy or wine; also overlaid or striped; made with extra fullness and beautifully matched gored; wide belt. Were \$16.50 to \$18.50. Wednesday, \$12.50; were \$20.00 to \$25.00, Wednesday, \$15.00.

NEW TAFFETA SUITS, \$22.95.
 Another lot of smartly tailored taffetas, in assorted styles; black and navy only. Special Wash Suits **22.95**

WOMEN'S COTTON SUMMER FROCKS
 Sports Frocks, \$2.95—Made in a fine cotton fabric, with white skirt and striped middie coat effect; belted or other styles, in plain pink, cadet, tan or white, in smartly tailored styles. Sizes 22 to 42. Special **2.95**

WOMEN'S IMPORTED SILK SKIRTS, \$12.50 AND \$15.00.
 The newest styles and pretty combinations of plaids, checks or stripes in black and white, rose, amethyst, green, navy or wine; also overlaid or striped; made with extra fullness and beautifully matched gored; wide belt. Were \$16.50 to \$18.50. Wednesday, \$12.50; were \$20.00 to \$25.00, Wednesday, \$15.00.

NEW TAFFETA SUITS, \$22.95.
 Another lot of smartly tailored taffetas, in assorted styles; black and navy only. Special Wash Suits **22.95**

WOMEN'S COTTON SUMMER FROCKS
 Sports Frocks, \$2.95—Made in a fine cotton fabric, with white skirt and striped middie coat effect; belted or other styles, in plain pink, cadet, tan or white, in smartly tailored styles. Sizes 22 to 42. Special **2.95**