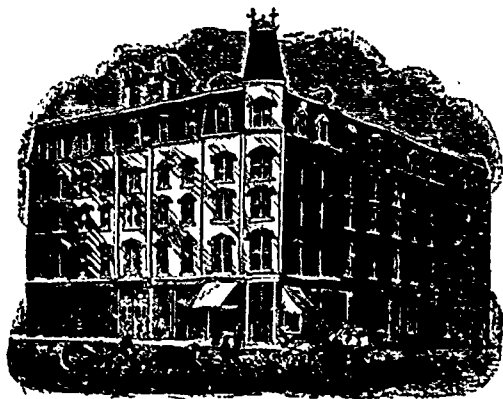


—THE—
Clarendon Hotel,



WINNIPEG

Opened April 1st, 1888.

(The proprietors have closed their New Douglass House business)

Strangers visiting Winnipeg
should see
The Clarendon Hotel.

RATES RANGING FROM

\$1.50 to \$3.50 PER DAY

Free Buss to and from all Trains,
and Porters in attendance.

Bennett & Co., Props

river and Chicago and the southwest; and further, that the long pending negotiations with the Imperial Government for the establishment of a first-class steamship line between Vancouver and Japan and China have at last been concluded." The resignation of Levi P. Morton, of New York, Republican candidate for Vice-president of the United States, which was sent in immediately after his nomination by the Chicago convention, was also accepted, and Senator Donald McInnes elected in his stead. It is understood Assistant General Manager T. G. Shaughnessy will be appointed general manager and vice-president.

C. P. R. at Duluth.

The following letter to the *Mississippi Valley Lumberman* shows the feeling at Duluth regarding the purchase by the C. P. R. of the Duluth, South Shore and Atlantic Railway: When it was announced a few weeks ago that the "Soo" road and the Minneapolis & Pacific had fallen into the hands of the big Canadian company,



TASSE, WOOD & CO

Manufacturers of

Fine Cigars,
MONTREAL.

Our Brands: { **Reliance Terrier,**
Mikado and General
Arthur.

Are unsurpassed by any in the Dominion

Ask your Wholesale Merchant
FOR THEM.

MONTREAL STENCIL & RUBBER STAMP WORKS

S. A. FERNEYHOUGH & CO.

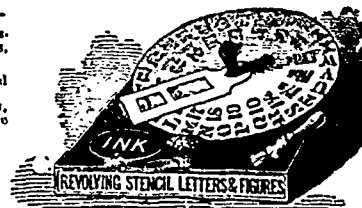
Stencil Mill and Bag Brands of every description. Steel Stamps, Soap Stamps, Burning Brands, etc., etc. Ribbon Stamps, Wax, Notary, and Corporation Seals, etc., etc. **RUBBER HAND STAMPS OF EVERY DESCRIPTION.**

Nickel Dating and Self-Inking stamps. Pocket and Pencil Stamps. Solid Rubber Type, etc., etc. Tabbox Patent Alphabet and Figures.

We employ experts and first-class hands, manufacturing on our own premises, where careful and constant supervision is given, thus being able to guarantee the **BEST WORK and CONSTANT SATISFACTION.** Sole Agents for the Dominion for

Reese's "New" Patent Adjustable Letters and Figures.

219 MCGILL STREET, MONTREAL.



JOHN OSBORN, SON AND CO.,
MONTREAL,

SOLE AGENTS IN CANADA FOR

BISQUIT, DEBOUCHE AND CO., COGNAC.

"PIPER-HEIDSIECK," SEC. CHAMPAONE.

SCHRODER AND SCHYLER AND CO., BORDEAUX.

OSBORN AND CO., OPORTO.

M. GAZTELU E YRIARTE, PORT ST. MARY.

SIR ROBERT BURNETT AND CO., LONDON.

KIRKER, GREER AND CO., (Ld), BELFAST-GLASGOW

"GLENROSA" PURE HIGHLAND SCOTCH WHISKY.

CAREY, HERMANOS AND CO., TARRAGONA.

C. MACHEN AND HUDSON, LIVERPOOL, Bottlers of
"Beaver" brand Bass's Ale and Guinness's Stout

WINNIPEG REPRESENTATIVE:

JOHN B. MATHER, McDermott Street.

Duluth looked upon the transfer with considerable indifference and a little satisfaction. But when the same men got hold of our South Shore road, to whose advent we have been looking forward to so hopefully and trustingly for over a year now, it had quite a different effect upon the Duluth mind. There is no doubt a feeling of disappointment here. Our people would much rather see the Grand Trunk in control of the South Shore than the Canadian Pacific. The former would have no great interest in any other Northwestern or Lake Superior city than Duluth and would naturally favor this city. We cannot expect that from the latter road. The natural eastern outlet for the Canadian Pacific's Manitoba trade will be by its North shore line, so long as it can take freight that way advantageously, and that controlling as it does the "Soo" line, there can never be any great competition between the route via Minneapolis and Sault St. Marie to the east and that via Duluth and St. Marie. Duluth wants one road, at least, that has no direct interest in St. Paul and Minneapolis, not because she is the enemy of those cities, but because she cannot have the advantages in rail freight rates to which her position entitles her

until there is such a road. If, however, the Canadian Pacific, to protect its new purchase will be compelled to build a direct line from Duluth to Winnipeg, Duluth will welcome the sale. The advantages of such a line to Duluth, were well set forth. In the last three days information has reached Duluth, or rather old information has been confirmed, which points to an early occupation of the undeveloped territory in northern Minnesota by at least one line from Duluth, by the building of the Duluth & Winnipeg road, which was started eight years ago, but has been dead or seemingly so for years. The road will not be in the interests of the Minneapolis & Manitoba, but whether it will represent the Canadian Pacific, or be independent of all other companies is not known.

One of the British Columbia Packing Co.'s boats on Saturday morning caught an immense spring salmon which weighed 64½ lbs. The fisherman had a terrible fight getting it landed as the fish struggled most bravely. When packed it made a little over a case of four dozen cans. This is the largest salmon caught on the Fraser this year, and ranks among the largest ever caught on the river.