

### IMPORT DUTIES OF JAMAICA ISLAND.

The Tariff Act of 1899 placed the duty on lumber imported to Jamaica, West Indies, as follows: Wood, 1,000 feet of pitch pine, white pine lumber, or other lumber, in rough or sawed, by superficial measurement of each thick, 9d; wood per 1,000 feet of pitch pine, white pine, or other lumber planed, smoothed, grooved and tongued, ceiling and flooring boards, but not otherwise manufactured, by superficial measurement of 1 inch thick, 1s; shingles, cypress, more than 12 inches in length, per 1,000, 6s; shingles, wallaba, per 1,000, 6s; shingles, Boston chips, and all shingles not otherwise enumerated or described, per 1,000, 4s.

### NEW TARIFF IN BRAZIL.

A new tariff is in preparation in Brazil, in which lumbermen of Canada are interested, inasmuch as Brazil is a heavy importer of pine lumber. There are two rates of duty, one the general tariff applicable to imports from the world generally, and the other a minimum tariff applied to articles imported from countries which admit Brazil products, notably coffee and rubber, at low duties or none, of which the United States is one. The duties on lumber will be assessed by the cubic meter, which is approximately 35½ cubic feet, and the proposed duties are on oak \$8.25 minimum and \$11.55 general, and on pine \$2.32 minimum and \$3.37 general. The above values are an interpretation into American money of the Brazilian milreis.

### PUBLICATIONS.

The World's Paper Trade Review, of London, Eng., has entered upon its twenty-first year. We are reminded of this by a special number just to hand, of which numerous illustrations form a most interesting feature.

Jack London writes in the Review of Reviews for January on "The Economics of the Klondike," forecasting, in a measure, the material progress of that wonderful region under natural conditions of development.

We are indebted to T. Sullivan & Co., of Buffalo, for one of the prettiest calendars which has reached our desk. This firm are wholesale dealers in hardwood lumber, with office and large yards at the corner of Niagara and Arthur streets.

Lumber Tool Catalogue A, 1899, has been received from Thos. Pink, manufacturer of lumber driving tools, boom chains, cant hooks, peavies, etc., Pembroke, Ont. Mr. Pink is represented in Quebec, New Brunswick and

Nova Scotia by Bacon Bros., 377 St. Paul street, Montreal; in Toronto by Rice, Lewis & Son, in northern Ontario by Purvis Bros., North Bay, Sudbury and Webbwood; and in British Columbia by J. R. Hunter, Nelson.

The Merchants Cotton Co. has placed an order for all the belting in its new extension, to contain 500 looms and 20,000 spindles, with D. K. McLaren, Montreal. The order includes 155 feet, 50 inch, 3 ply; 160 feet 14 inch, 3 ply; 500 feet 10 inch, 2 ply; 800 feet 6 inch, 2 ply.

The Board of Trustees of the National Wholesale Lumber Dealers' Association have decided to hold their next annual meeting in the city of Baltimore during the first week in March next. This point can be conveniently reached by a large number of the members, and it is hoped that the meeting will be the means of getting interested in the Association a large number of manufac-

turers and wholesale dealers. Mr. J. N. Scatterd, of Buffalo, is president of the Association, and Mr. E. C. Grant, of Ottawa, is a member of the Board of Trustees.

## CORDAGE

Manufacturers of . . .

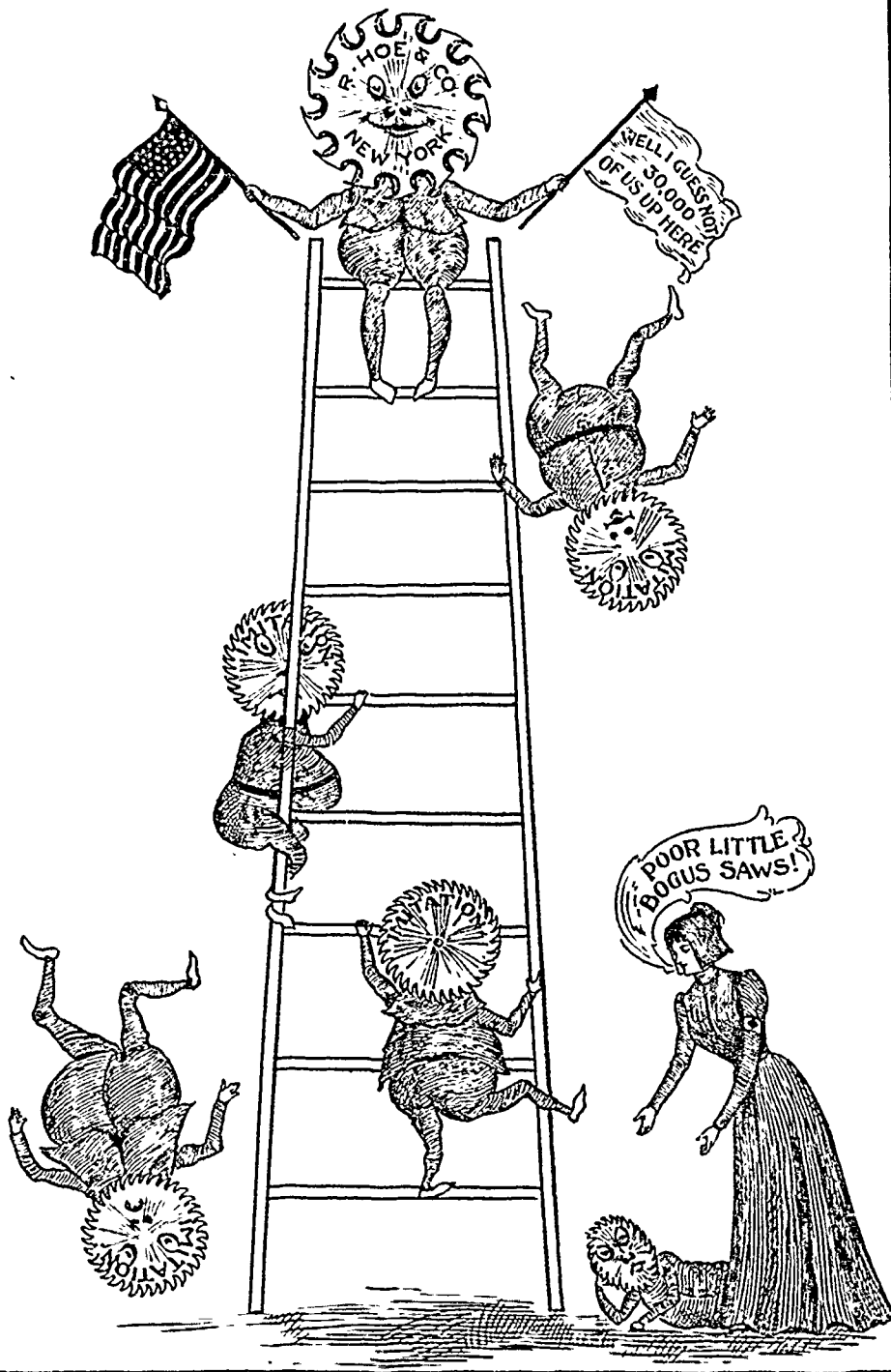
**MANILA ROPE**

**TRANSMISSION ROPE**  
Double and Single.

(Steam Dry Tarred) **LATH YARN**

**THE INDEPENDENT CORDAGE CO., LIMITED, TORONTO**

## NO ROOM AT THE TOP

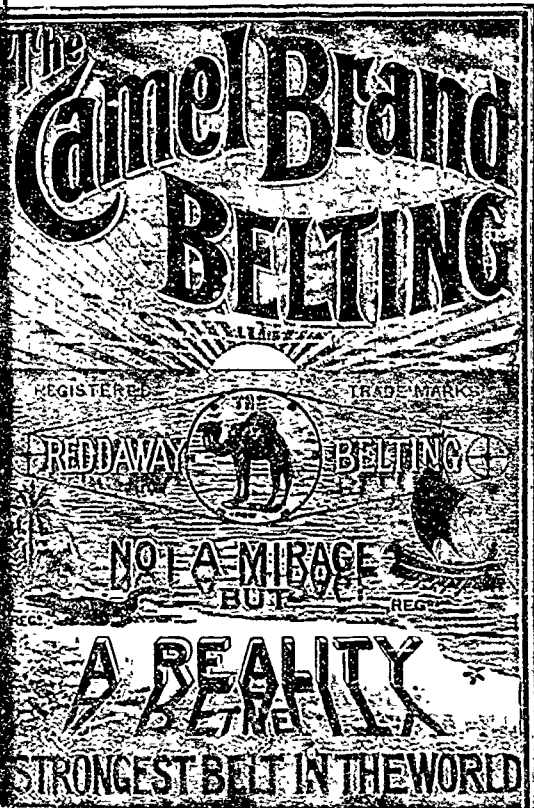


When in need of a Saw which will stand up and do good work in all kinds of timber, order one from R. HOE & CO., with their celebrated Patent Chisel Teeth, and so obtain perfect satisfaction.

**R. HOE & CO.**  
Manufacturers

504-520 Grand St.

NEW YORK, N. Y.



None Other Genuine

**W. A. Fleming & Co.** 57 St. Francois-Xavier Street  
MONTREAL  
.. SOLE AGENTS ..