

## MUNICIPAL ENGINEERS, CONTRACTORS AND MATERIALS

**WILLIS CHIPMAN**

Hon. Grad. McGill University.  
M. Can. Soc. C.E. M. Am. Soc. C.E.  
Mem. Am. W.W. Ass'n.

WATERWORKS, SEWERAGE WORKS, GAS  
WORKS, ELECTRIC LIGHT AND  
POWER PLANTS  
Reports, Surveys, Construction, Valuations  
103 BAY STREET - TORONTO

**R. E. SPEAKMAN, C.E.**

A. M. Inst. C. E., 1878.

**CONSULTING ENGINEER**

Waterworks, Sewerage and Sewage Disposal.  
Municipal Improvements.  
Granolithic Pavements.  
Electric Light Plants.  
Drainage and Irrigation of Land.  
Coal Handling Plant and Machinery.  
Plans, Specifications and Estimates.  
Construction and Valuations.

Canada Life Building - TORONTO

**Roderick J. Parke**

Am. Can. Soc. C.E., A.M. Amer. Inst. E.E.

**CONSULTING ENGINEER**

Hydraulic Power Development. Long Distance  
Power Transmission. Steam Plants, Electric  
Lighting and Power Systems. Tests  
Valuations. Reports.

59-410 Temple Building, TORONTO, CANADA

Telephones (Office—Long Distance Main 3047  
Residence—Long Distance North 2204  
Telegraphic address: "Rodparke."  
W. U. Code, Univ. Edition.

**Wm. Mahlon Davis**

Graduate R. M. College.  
M. Can. Soc. C. E. Ont. Land Surveyor.

**CONSULTING ENGINEER**

BERLIN, ONT.

Waterworks, Sewerage, Sewage Disposal.  
Drainage under The Municipal Act, Roadways.

**V. G. McNeill Thompson****CONSULTING ENGINEER**

M. Inst. C. E. M. Can. Soc. C. E.  
M. Am. Soc. C. E.

mination of Works, Reports, Water Power  
Development, &c., &c.

T. CATHARINES, ONTARIO

**ROSS & HOLGATE****Consulting and  
Supervising Engineers**

Waterworks, Electric Light and Power  
Plants, Structural Work, Reports,  
Estimates, Arbitrations.

ST. JOHN ST. - MONTREAL  
KINNON BLDG. - TORONTO

**Algival W. St. George**

Mem. Inst. C. E. London, England.  
Mem. Can. Soc. C. E.

**CONSULTING ENGINEER**

Railway, Sewerage, Water, Hydraulic,  
Expert and Arbitrations, &c.

ELL TELEPHONE BLDG. MONTREAL.  
Telephone, Main 4717.

**AMES C. KENNEDY**

MEM. CAN. SOC. C.E.

Reports, Supervision, Con-  
struction, Dams, Water-  
Power Development, Water  
Works, Sewerage, Founda-  
tions, &c.

O. Box 710, OWEN SOUND, ONT.

Please mention THE CONTRACT RECORD  
when corresponding with advertisers.

**THE PHOENIX BRIDGE & IRON WORKS,  
MONTREAL  
GENERAL STEEL CONTRACTORS**

Large Stock I BEAMS, CHANNELS, ANGLES, TEES, ZEEs and  
PLATES always on hand.

**Portland Cements...**

HIGH GRADE GERMAN BRANDS FOR GRANOLITHIC  
AND ARTIFICIAL STONE SIDEWALKS.

Sewer Pipes, Best English Cements. Best Belgian Cements  
Culvert Pipes, &c. W. McNALLY & CO., Montreal

**W. & F. P. CURRIE & CO.**

345 St. James St., Montreal

Importers of

SEWER PIPES.

CULVERT PIPES, ETC.

VENT LININGS,

FLUE COVERS,

FIRE BRICKS,

FIRE CLAY,

WHITING.



PORTLAND CEMENTS,

HIGH GRADE ENGLISH

" " GERMAN

" " BELGIAN

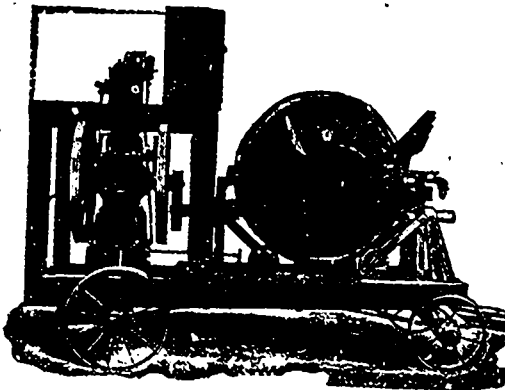
PLASTER OF PARIS

BORAX,

CHINA CLAY.

SMITH  
CONICAL  
CONCRETE  
MIXER  
11

Different  
Sizes and  
Styles



Mixes in Batches. Discharges by Tilting while  
Running. Mounted on Skids or Trucks.  
Catalogue on Application.

— SOLE CANADIAN AGENTS —

W. H. C. Mussen & Co., 763 Craig St.,  
MONTREAL

**CANADIAN  
CONTRACTORS'  
HAND-BOOK**

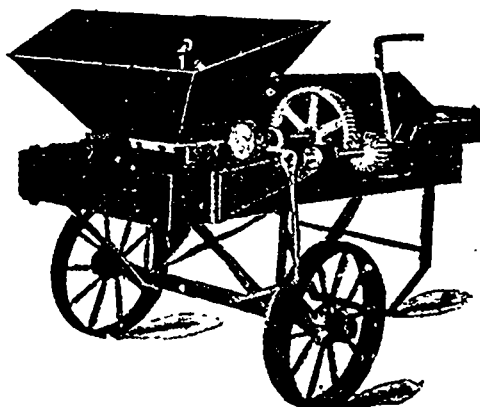
and  
Estimator

Third Edition

Price \$1.50; to  
subscribers of  
the Canadian  
Architect and  
Builder, \$1.00.

SEND FOR A COPY

C. H. Mortimer  
Publishing Co.  
Toronto.

**The Rotary Man Power Concrete Mixer**

Capacity five cubic yards  
per hour.

Continuous in Action.

Specially adapted for Sidewalk  
and Street Work, and all classes  
of concrete work where a thorough  
mixture with but small capacity  
is required.

**E. F. DARTNELL,**  
Sales Agent.

180 St. James Street,  
Montreal.