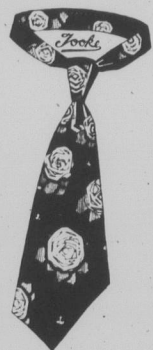


Christmas
Season
1921

Christmas Neckwear



Four in hand Ties
in fancy assorted
colors, including the
Newest thing in
black with white
stripes.

Also Polka Dots
and plain colors.

In Fancy Boxes

\$1.00, \$1.25 \$2.00

Hook on Ties and Bows
Jazz Bows

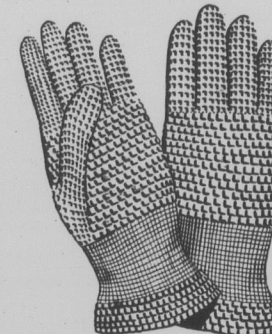


At This Christmas Season

the season of joy and gladness, what would
be more acceptable to a gentleman relative
or friend than something to wear? We feel sure that you will be
able to find just what you require in our stock,

Christmas
Season
1921

SCOTCH KNIT WOOL GLOVES
65c and \$2.00



Buckskin wool lined \$4.50
Grey or Tan Mocha, Wool lined
\$1.50 to \$3.50
Tan Mocha Mitts \$2.25 and \$3.50



Silk
Shirts

\$8.00

Superior Quality Negligee Shirts
\$2.25 to \$5.00

Handkerchiefs

Men's Initial 50c
" Plain Linen 60c
" Excelsa (fancy border) 25c
" Lawn in pkgs., one for 25c
and 3 for 50c
Also Bandana Hkfs. in Red and Blue.

Dark Grey Worsted

SUITS

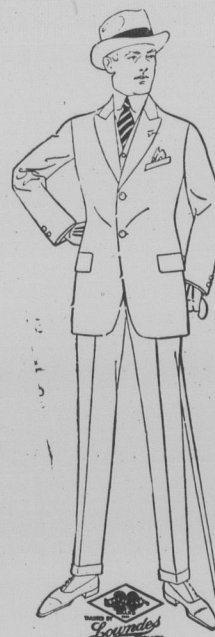
Excellent Value

\$40

NAVY BLUE SERGE

\$40

MIXED TWEEDS
AND BANNOCKBURN
\$25.00 and up



Men's Heavy
Storm Collar

OVERCOATS

Full Belted
Half Belted
and Plain Back

\$26

to

\$45



For The Children

Suits and Overcoats

KNITTED SUITS
including Caps and Mitts

Wool Gloves, Mocha Mitts,
Blouses, Caps and Braces.

Knitted House Coats
Knitted Vests

Curling Togs

Mackinaw Coats, Overshoes,
Jersey Cloth Rubbers, Sweaters.

Suit Cases, Arm Bands, Garters,
Belts, Spats, Collar Boxes,
Cuff Links, Hosiery, Walking
Canes, Umbrellas, Braces.

REGAL SHOES

In Broad, Medium, or Narrow Toe \$8.50

Silk Mufflers

In fancy stripes, and plain
black, white or grey

\$1.50 to \$3.50

Wool Mufflers

Brushed Wool and Mixed Colors \$1.25 to \$2.50
Plain Knitted, Colored Ends \$2.75

Andrew's Clothing Store

WE extend the Season's Greetings to all our friends and customers. May this coming
Christmas be a most pleasant one.

CHRISTMAS
EDITION

VOL. XXIV.—No. 23.

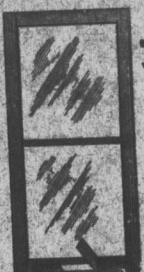
J. D. H. Hargreaves
CAMPBELL
NEW BRUNSWICK

Lumber Planing Mills

Storm Sash pay for themselves quickly in fire.
Storm sash does away with draughts and loss
Save your money and enjoy comfort and be
storm sash for your home now.

We can supply storm sash to suit your open
our stock alone will do—if not, send us the outside
sash you want and we will make them up for you
Our sash are made of sound white pine, grain
They are carefully machined and fitted so as
tight.

Windows are glazed with clear glass, applied
by glazier's points and best sash putty.
We recommend always the 4 light storm sash
are in 2 lights only. They are stronger, cost less
also glass used, and if a light of glass is broken
at less expense.



Sizes in stock ready for im-
shipment. Complete with gl-
ventilator in bottom rail.

2 lts.	24x24	\$3.35
2 lts.	28x28	4.10
2 lts.	30x30	4.45
4 lts.	12x24	3.15
4 lts.	14x28	3.35
4 lts.	16x30	4.15

DO NOT DELAY.
When ordering storm sash state outside size
of glass in your inside sash.

WE ADV



Re

range of wonder ful
patterns, in Swiss
and Italian Silks.

Silk Shirts
\$6.75

Wool Gloves
75c to \$2.00

Armlets and Garters

In Xmas Boxes

FERG