

EXHIBITS THAT INVITE YOUR ATTENTION AT THE FAIR

SEE THE MAGNIFICENT EXHIBIT OF

Reedcraft

Goderich

FURNITURE

In the Manufacturers' Building
At The Western FairGoderich Artcraft Furniture Co. Ltd.
GODERICH, ONTARIO

EVERY HOME SHOULD HAVE AT LEAST THREE

TIP TOP MILK BOTTLE

COVERS

FOR HOUSEHOLD USE.

Sanitary, rust and germ-proof.

Keeps out flies, dust and odors.

From a health standpoint it is worth \$25.00, and
only costs 25c.

SEE DEMONSTRATION.

Booth 323, Manufacturers' Building.

The Tip Top Bottle Top

30 Leopold Street, Toronto, Ontario.



SO MUCH DEPENDS ON DOORS and the WOODWORK

IF you are planning a home, or a building of any kind, you should know how important are doors that are "true," woodwork that is lasting. In the new Manufacturers' Building at the Fair, our representative will gladly explain the importance of specifying the best in woodwork and doors—and the display of finished work at our booth will prove very interesting.

Ask Your Contractor about the Quality of
"Gerry" Woodwork.

Wm. GERRY & SONS

21-23 York Street.

Phone 377

THE HIT OF THE FAIR!
DON'T MISS

KEENE BROS.

Furniture and Rug Exhibit

Taking Up the Entire End of the Crystal
Palace Upstairs.

See the complete Ivory Bedroom Suite for \$100.

See the Royal Blue Mothproof Mohair Living-Room
Suite.See the Chinese Rugs that are the highest quality rugs
made in the world.See the finest and largest exhibit of Rugs ever shown
in London.

MEET US AT THE FAIR.

KEENE BROS.

King Street, London.

EXHIBITS EXCEL IN AGRICULTURE

Crowds Throng Flower and
Fruit Display Building At
Fair Grounds.

ANNOUNCE PRIZE LIST

The Agricultural Hall is one of the outstanding buildings of the Fair, not only in the quality of the exhibits there, but in the arrangement of the various exhibits in such a way as to show them up to the best advantage.

The center of the great hall is taken up with a bench display of potatoes, beets, cabbage and in fact everything that the farm can produce. These exhibits have all been judged, and but for the fact that the prize tickets are still attached to the winning specimens, it would be extremely difficult to differentiate between the various specimens.

The farm crops proper are arranged on the wall, and the bright straw of the carefully prepared sheaves gives a cheerful and relieving contrast to the darker colors of the other exhibits. The quality of the produce is high, goes without saying. It is an established fact that the growers of this vicinity show only the very finest of their products.

Besides the individual class entries of the various vegetables, several institutions and associations have display exhibits. Among these, displays of the Middlesex Fruit Growers' Association, and the Ontario Hospital stand out as the best.

Fruit and Flowers Good.

The Horticultural Building is probably the most popular one, from the standpoint of the sightseer. It is a wonderland of beauty, and the fruit-growers and florists exhibiting there seem to have worked hard to outdo one another in the creation of miniature gardens.

Half of the building is given over to the bench display of the competition in tree fruits, and these show a lot of painstaking preparation, as they appear to be as nearly perfect as one can picture them in wonderful abundance. One particularly striking feature of the exhibit in this building is the section devoted to the display of box packed apples and pears. The clean fresh fruit arranged in neat rows, finished off with paper headers, makes an attractive offering.

The portion of the building set apart for the florists is a credit to the growers. The predominating flower of course, at this season is the gladiolus, and four displays of beautifully colored "Glads" fills the center floor space.

Prize-winners.

The horticulture awards are as follows:
Plants and Flowers—Plant in pot, J. S. Taylor, city; W. S. Gibson, London. Foliage plants, J. S. Taylor, Charles Mawson, city. Ferns, W. S. Gibson, J. S. Taylor. Greenhouse and store plants, J. S. Taylor, R. Fletcher, city; Mrs. Shipp, city. Flowering and ornamental begonias, J. S. Taylor, R. Fletcher. Geraniums, W. S. Gibson. Two hanging baskets, J. S. Taylor, Mrs. Shipp, H. Whiting, city. Greenhouse or stove plant, W. G. Hines, city; J. S. Taylor, J. S. Fletcher, city. Flowering begonia, R. Fletcher, W. S. Gibson, Mrs. O. Cooke, Broughdale. Begonias, rex, J. S. Taylor, Begonias, flowering, J. S. Taylor, R. Fletcher. Specimen fern, J. S. Taylor. Specimen palm, H. G. Hines. Double geraniums, R. Fletcher, J. S. Taylor, W. S. Gibson. Begonias, tuberous rooted, L. E. McGugan, city; R. Fletcher, H. Gramlich, city. Coleus, J. S. Taylor, R. Fletcher, H. J. Whiting. Display of annuals, perennials, etc., cut, A. Pearson, London Junction; T. H. Hill, city; J. Parry, city. Floral design for ruveria, Mrs. J. Benstead, Stratford; Bona Vista Gardens, Lambeth; J. S. Taylor. Asters, Mrs. Pittaway, Weston Grove; Benjamin Miller, city; Mrs. Burr, city. Asters, 12 varieties, Mrs. Pittaway, Benjamin Miller, A. Pearson. Pansies, George Cairncross, city; Mabel E. Smith, city; J. Parry. Dahlias, L. E. McGugan, R. Fletcher, Miss G. Smith, city. Gladiolus, 12 varieties, St. Thomas Horticultural Society, H. Attridge, city. Gladiolus, 12 varieties, three of each, Miss G. Smith, T. H. Hill, H. Attridge. Sweet peas, A. Pearson.

Bride's Bouquet.

Center arrangement for dinner table, Bona Vista Gardens, A. Pearson, J. S. Taylor. Basket of cut flowers, J. S. Taylor, A. Pearson, Mrs. Burr. Bride's bouquet, A. Pearson, Gordon Snook, Lambeth; H. Attridge. Presentation bouquet, Gordon Snook, A. Pearson, J. S. Taylor. Wreath of flowers, J. S. Taylor, A. Pearson, Mrs. Burr. Display of petunias, A. Pearson, Charles Mawson. Dianthus, single or double, A. Pearson, Mrs. W. Smith, Byron; W. S. Gibson. Marigold, T. H. Hill, H. O. Hunt, city; Mabel Smith, city. Zinnias, A. Pearson, H. G. Whiting, city. Gladiolus, Petunias, single, A. Pearson, R. Fletcher, Charles Mawson. Petunias, double, A. Pearson, R. Fletcher. Stocks, A. Pearson. Phlox, Mabel Smith. Phlox, perennial, H. Attridge, T. H. Hill, A. Pearson. Celosia, A. Pearson. Calendula, J. Parry, T. H. Hill, A. Pearson.

Amateur Awards.

Tuberous begonias, H. J. Gramlich, city; L. E. McGugan. Cannas, H. J. Gramlich. Geraniums, Mrs. Shipp, H. J. Gramlich. Begonias, ornamental, H. J. Gramlich. Begonias, flowering, J. Gold, city; H. J. Gramlich. Dahlias, L. E. McGugan. Charles Mawson, Mrs. Gladys Smith. Gladiolus, Miss G. Smith, H. O. Hunt, city; H. J. Gramlich. Sweet peas, O. Cooke, Miss Anguish, Wilton Grove. Pansies, Mabel Smith, H. O. Hunt. Charles Mawson. Asters, six varieties, Benjamin Miller, Mrs. Pittaway, H. R. Sharp, Clinton. Phlox, Mabel Smith, H. O. Hunt. O. Cooke. Petunias, H. J. Gramlich, Charles Mawson; Nasturtiums, Mabel Smith, Charles Mawson. Stocks, H. J. Gramlich, Mabel Smith, J. Gold. Center-piece for table, Miss Stringman, L. E. McGugan, Miss B. Kendrew, Wilton Grove. Horticultural Society special: A recommendation made to the board that two first prizes be given the St. Thomas Horticultural Society and the London Horticultural Society.

FAIR POULTRY AWARDS ANNOUNCED BY JUDGES

CONTINUED FROM PAGE EIGHT.

J. Bogue, 1 and 2.
Golden Poland—Hen, G. and J. Bogue, Cockerel, G. and J. Bogue, Pullet, G. and J. Bogue.
Silver Poland—G. and J. Bogue, David Bogue, Hen, G. and J. Bogue, 1 and 2; David Bogue, 2; Cockerel, G. and J. Bogue, Pullet, David Bogue, G. and J. Bogue.

SEBRIGHTS ON EXHIBITION.

Handon—Cock, J. Walker, Hen, J. Bogue, Cockerel, G. and J. Bogue, Pullet, G. and J. Bogue.
Herman Taylor, 1; Walker, Pullet, 1; Walker, Herman Taylor.

A. O. V. Fowls—Cock, Austin Brill, Hen, Austin Brill, Cockerel, A. George, 1 and 2; A. Miller, 3, Pullet, A. George, 1 and 2; A. Miller, 3.

Golden Sebright—Cock, Mrs. Tozer, G. Tozer, Morris Inwood, Hen, C. Tilt, 1 and 2; Morris Inwood, Cockerel, C. Tilt, O. Taylor, Morris Inwood, Pullet, C. Tilt, 1 and 2; O. Taylor, 3.

Silver Sebright—C. Tilt, 1 and 2; H. McKenney, 3. Hen, C. Tilt, 1 and 2; H. McKenney, 3. Cockerel, T. Wilcox, C. Tilt, Pullet, C. Tilt, 1; T. Wilcox, 2.

R. C. Black—Cock, R. Oke, C. Tilt, W. Wilkey, Hen, W. Wilkey, R. Oke, C. Tilt, Cockerel, W. H. Wilkey, 1 and 2; Pullet, W. H. Wilkey, 1 and 2.

MANY RABBITS ENTERED.

Black Sibeck—Buck, senior, Argyle Rabbity, 1 and 2; A. V. Green, 3. Doe, senior, Argyle Rabbity, 1 and 2; 3. Buck, junior, F. Nye, city; W. B. Clark, city; A. V. Green, Doe, junior, A. V. Green.

Dutch—Doe, Roy Cannon, city. Angora—Buck, L. A. Bull, city, 1 and 2; McCarty, 2. Doe, L. A. Bull, Angora Rabbity, Roy Cannon, 1 and 2; McCarty, 2.

New Zealand—Buck, senior, F. Nye, 1 and 3; B. Burgess, city, 2. Doe, senior, F. Nye, 1 and 2; B. Burgess, 3. Buck, junior, F. Nye, C. White, city; Argyle Rabbity, Doe, junior, F. Nye, 1 and 3; Argyle Rabbity, 2.

Steel Gray Flemish Giant—Buck, senior, Miss Palmer, 1 and 2; Argyle Rabbity, 3. Doe, senior, Miss Palmer, 1 and 2; Argyle Rabbity, 3. Buck, junior, Miss Palmer, Doe, junior, Miss Palmer, 1 and 2.

Natural Gray Flemish Giant—Buck, Miss Palmer, 1, 2 and 3. Doe, Miss Palmer, 1, 2 and 3.

Black Flemish Giant—Buck, Miss Palmer, 1 and 2. Doe, Miss Palmer, 1 and 2; S. Charlton, city, 3.

Belgian Hares—Female, senior, D. Graham, Male, junior, D. Graham, Guinea Pig—Male, Miss Palmer, Port Stanley, 1 and 2; Argyle Rabbity, city, 3. Female, G. Redder, 1; E. Henshaw, 2 and 3.

Ferrets—Male, D. Graham, city, 1 and 2. Female, D. Graham, city, 1 and 2.

MRS. V. A. BUTTS WILL JOIN HUSBAND IN SHANGHAI

Special to The Advertiser.

Paris, Sept. 11.—Mrs. Victor A. Butts has received word that her husband has been transferred from Shanghai, China, to Hankow, where he is stationed in the interests of a large business firm. Mrs. Butts and family will shortly join Mr. Butts. They will travel via Yokohama.

Victor Butts spent part of last winter on his father's homestead near Oak Park Farm, and one Sunday evening spoke on "A Businessman's Outlook on China," at the Methodist Church.

PAINT WALLS OF BRIDGE.

Special to The Advertiser.

Paris, Sept. 11.—A gang of men, under Michael Kelly, are painting the walls of the Nith River bridge to further strengthen them against the assaults of winter. It will be remembered that part of these abutments caved in last spring, being undermined by the floods.

CHOICE JERSEYS.

Special to The Advertiser.

The Maple View Stock Farm is showing choice Jerseys of all ages. This herd is headed by "Chief Maple View," a fine animal. Juno of this herd has tested over 7,000 lbs. milk and 450 lbs. of butter as a 3-year-old. Mr. Bert Lawson, R.R. No. 7, London, is the proprietor.—Adv.

51-0

CATTLE JUDGES RUSHING WORK

Several Classes of Horses Completed At Western Fair.

ANNOUNCE AWARDS

The judging of the livestock went on all day yesterday at the Fair and by tonight the stock will have been judged in every department. The large entries in each class make the judging difficult and all of the books of the classes judged have not been made up as yet.

The same thing applies to cattle, where although several breeds have been judged, the only awards available are for Shorthorns.

The following are the awards for the livestock and horses that have been judged and for which the results are at hand:

HORSES.

Class 2—Standard-bred horses—Section 1, stallion, 4 years: 1, John Decker, Zurich; 2, John Kent, Centralia; Section 5, stallion, any age: 1, John Decker, Zurich; Section 6, standard-bred mare: 1 and 2, John Decker, Zurich; 3, W. H. Shaw, Glanworth; Section 7, gelding or filly, 3 years: 1, Ratz & Roland, Tavistock; 2, D. Douglas & Son, Mitchell; Section 8, gelding or filly, 2 years: 1, John Decker, Zurich; Section 10, foal of 1923: 1 and 2, John Decker, Zurich; 3, W. H. Shaw, Glanworth.

CATTLE.

Class 16—Shorthorn cattle—Section 1, 3-year bulls: 1, Jas. Douglas, Caledonia; 2, Campbell & Amos, Moffat; Ont. Section 2, 2-year bulls: 1, Joseph White, St. Marys; 2, George Sparkman, St. Thomas; Section 3, senior yearling bulls: 1, Campbell & Amos, Moffat; 2, W. Walde, Stratford; Section 4, bulls, junior yearling: 1, Jas. Douglas, Caledonia; 2, Dan Brown & Sons, Shedden; 3, Colbeck Bros., Elora; Section 5, senior bull calf: 1, James Douglas, Caledonia; 2 and 3, Campbell & Amos, Moffat; 4, Dan Brown, Shedden; Section 6, junior bull calf: 1, James Douglas, Caledonia; 2 and 3, Campbell & Amos, Moffat; Section 7, bull, grand champion, won by Jas. Douglas, entry Brownside Hero, Section 11, cow in milk: 1, Alex Hall, Ayr, Ont. Section 12, heifer, 2 years: 1, Campbell

& Amos; 2, Jas. Douglas; 3, Campbell & Amos. Section 13, heifer, senior yearling: 1, 2 and 4, Jas. Douglas, Caledonia; 3, Campbell & Amos, Moffat.

Class 16—Section 14, heifer, junior yearling: 1 and 3, Campbell & Amos; 2, W. Walde, Stratford; Section 15, senior heifer calf: 1, Jas. Douglas, Caledonia; 2, Campbell & Amos; 3, O. Turnbull & Son, Brussels, Ont. Section 16, junior heifer calf: 1, Campbell & Amos; 2 and 3, Jas. Douglas, Caledonia; Section 17, female, senior champion: 1 and 2, Campbell & Amos, Moffat; Ont. Section 18, female, junior champion: 1 and 2, Jas. Douglas, Caledonia; Section 19, female, grand champion: 1, Jas. Douglas; 2, Campbell & Amos, Moffat; 3, Colbeck Bros., Elora.

THE QUEEN ANNE PIANO LEADS IN THE PIANO EXHIBIT AT LONDON, ONT.

Among the 1924 models shown by the Old Firm of Heintzman & Co. Limited in their splendid exhibit this year the Queen Anne, satin finish, stands out as one of the most beautiful pianos ever produced in Canada—beautiful and superior in tone, as in outward appearance. London branch, 242 Dundas street.

IMPROVE ARVA CHURCH.

Special to The Advertiser.

Arva, Sept. 11.—The Methodist Church is being redecorated and services will be held in the Town Hall in the meantime.

STOP THAT CHATTERING—USE TUXEDO CHATTERLESS OIL

in your Ford Car. Stops the jerks and jars.

For sale by

Star Oil Co.

LONDON.

See our Exhibit, Ground Floor, Manufacturers' Building.

51-

The "Autex" Extension Reel FOR Electric Lights

in the New Manufacturers' Building (at East Entrance), Exhibit 25.

Advantages: Safety, Economy and Convenience. Takes the light exactly where it is wanted; eliminates the necessity of dragging cord over the floor, breaking the insulation and thus increasing fire risks through short circuiting; and saves Cord, Lamps, Fuses, Guards, etc. This saving actually amounts to the price of the reel in a very short time.

The Autex Extension Reel has 25 feet of Reinforced Cord. Swivel Joint feature permits carrying light in any direction.

Jordan-Roberts Sales Limited

MANUFACTURERS.

LONDON. BRANTFORD. HAMILTON.

51u

THE "JACK FROST" ICE MACHINE CO. LIMITED

invites the people of London and Western Ontario to see its display of

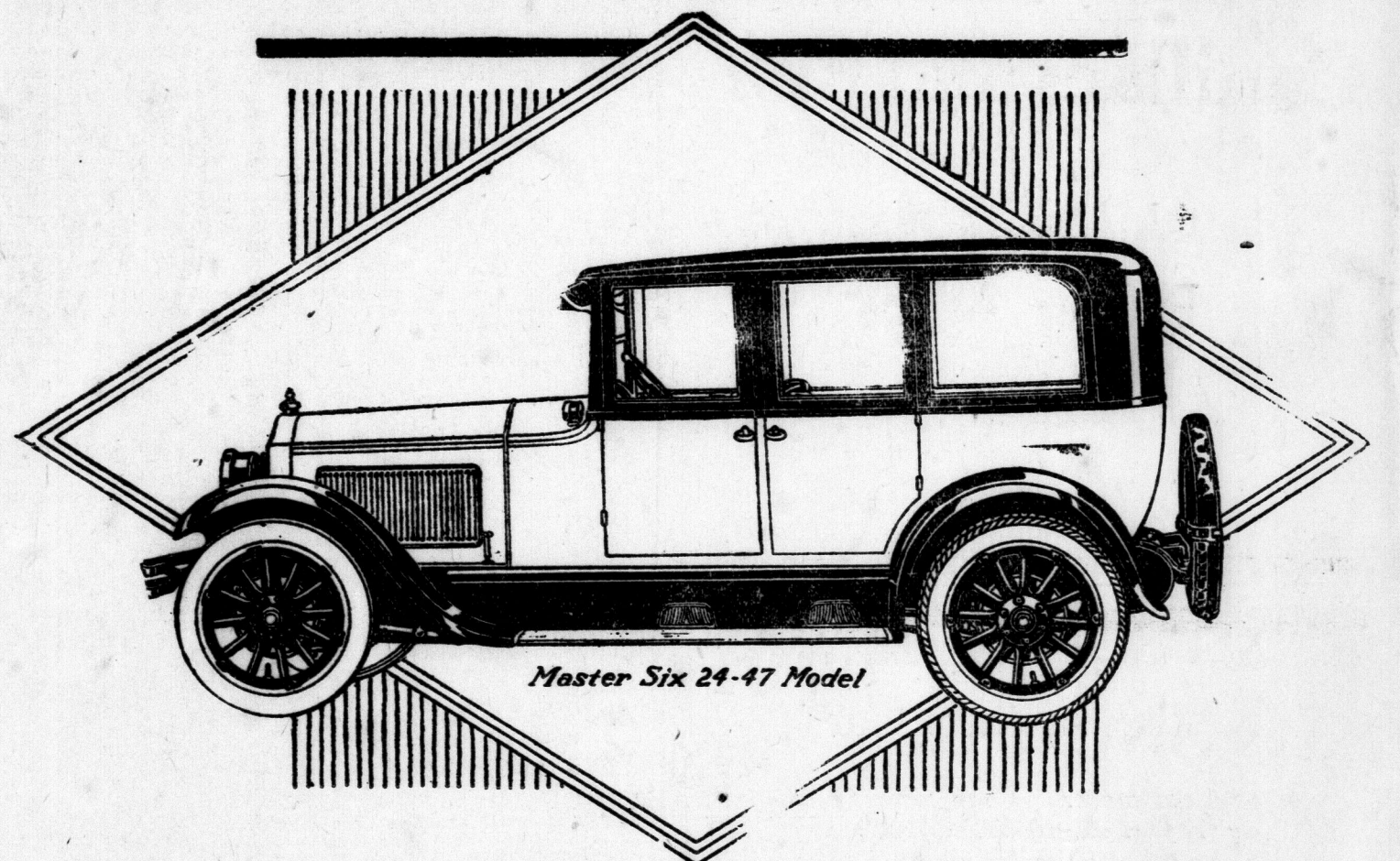
"JACK FROST" AUTOMATIC ELECTRIC REFRIGERATING SYSTEMS

in

BOOTH 120

in the new Manufacturers' Building at the Western Fair.

50k



Master Six 24-47 Model

Handsome and Better The New McLaughlin-Buick

IT'S a new and strikingly beautiful McLaughlin-Buick. Every line of its handsome body is designed for beauty in itself and to blend and harmonize with every other line so as to form a graceful, artistic whole. In color it is particularly attractive and pleasing and in refinements and appointments it meets the most exacting requirements of discriminating motorists. "Canada's Standard Car" has set a new high standard of artistic beauty in its 1924 models.

But back of this superb exterior are new and exclusive features of compelling interest. A more powerful engine—a longer chassis—four-wheel brakes—these are only a few of the more outstanding improvements. Yet the 1924 models are still McLaughlin-Buicks in principle—in construction—in reliability.

Come and see these wonderful new cars at the London Fair, or our Showrooms. Visit our special display. You will surely feel that the time was well spent.

McLAUGHLIN MOTOR CAR CO. Limited
Subsidiary of General Motors of Canada, Limited, OSHAWA, ONTARIO

BRANCH HOUSE: BATHURST AND RICHMOND STREETS

Have You Seen the New 1924 Cars?

McLAUGHLIN-BUICK



Motorists!

No more danger, fuss or trouble putting your arm outside to signal the man behind. Let him know which way you are going to turn by installing a

Bishop Direction Indicator

By simply pressing a button on the steering column, an illuminated arrow is projected from the side of your car AT THE FRONT, right or left according to the direction you are taking. It eliminates danger to yourself and the motorist following. Recommended by Police Chiefs all over the province. Be sure to see the exhibit in the Manufacturers' Building at the Fair, and have it demonstrated.

The
Bishop Direction Indicator Co.
Collingwood, Ontario.