

STEERS Ltd.

STEERS Ltd.

STEERS Ltd.

STEERS Ltd.

STEERS Ltd.



**Underwear**  
WOMEN'S FLEECE LINED UNDERWEAR—Blay and Cream Underwear—neatly finished with crocheted binding at neck and front. Reg. 75c. garment. Tuesday and Wednesday . . . 63c.

CHILDREN'S WHITE AND CREAM FLEECE UNDERWEAR—To fit from 1½ to 4 years. Cécily Little garments well made and finished. Reg. 35c. each. Tuesday and Wednesday . . . 32c.

**BARGAIN NEWS**

**A New Feature in This Store's System of Merchandising**

Commencing to-morrow, we will be offering, in addition to our regular Week-End Economy Sales

**TUESDAY & WEDNESDAY BARGAINS** in new merchandise that is in season, and which is necessary in every household. No value pretence, but the actual giving of **GOOD SEASONABLE GOODS** at prices lower than those quoted by any other store for the same grades.

**READ BELOW**

**Ribbons**

TAFFETA SILK—In Pink, Sage, Sky, Grey, Emerald, Rose, Brown, Navy, Black and White. 4 inches wide Reg. 27c. each. Tuesday and Wednesday . . . 22c.

MAVRE RIBBONS—With a bright Satiny finish. All the newest shades; 4 inches wide. Reg. 45c. yard. Tuesday and Wednesday . . . 40c.

Here we are with a Full Page of Bargains for

**TUESDAY AND WEDNESDAY**

Every Item Spells Economy in Blazing Letters of Gold

*Steers Limited*

**JUST READ OUR AD**

*Steers Limited*

**MAIL YOUR ORDERS**

*Steers Limited*

**NEW! ITEMS FOR BARGAIN HUNTERS**

*Steers Limited*

**Overcoats and Raglans at Sale Prices**



**Men's Wool Tweed Overcoats.**  
New Overcoats of Wool Tweed Overcoating, in Brown, light Grey and dark Grey shades. Well and stylishly made with inserted pleat at back, belt at waist and belted sleeve. A remarkable value at the low price of \$14.00. Special for Tuesday and Wednesday . . . \$12.50

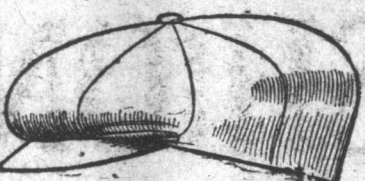
**Men's Navy Raglans.**  
Of showerproof raglan material in a very fine weave, stylishly cut and well finished throughout. Has a belt at waist and belted sleeve which can be conveniently closed in very wet weather; sizes 34 to 42 Reg. \$15.50 each. Tuesday and Wednesday . . . \$14.25

**Men's Black Kid Boots.**  
Blucher shape in wide-fitting style with low rubber heels; sizes 6 to 9½. Reg. \$5.75 pair. Tuesday and Wednesday . . . \$5.25

**Men's Sweater Coats**

All pure Wool, knit in a very desirable stitch for service. The collars are in long roll or polo style. Colors of Camel and Brown. Sizes 38, 40 and 42. Regular \$4.00 each. Tuesday and Wednesday . . . \$3.40

**Men's Wool Sweaters.**  
Pull-over, sleeveless style, in Camel trimmed Brown or Purple. Sizes 36, 38, 40 and 42. Regular \$2.80 each. Tuesday and Wednesday . . . \$2.35



**Men's Tweed Caps.**  
Up-to-date styles, fashioned from fine quality. English Tweeds in light and dark Greys, Browns and Fawns; sizes 6¾ to 7¾. Reg. 90c. each. Tuesday and Wednesday . . . 70c.

**Men's Fine Quality English Tweed Caps.**

In a host of different colors, including Browns, Fawns, Greys, etc. A full range of sizes. Reg. \$1.65 ea. Tuesday and Wednesday . . . \$1.35



**'Take Time by the Forelock'**

**Let Us have Your GROCERY ORDER Tuesday or Wednesday**

PETERS' BREAKFAST COCOA—An absolutely pure Cocoa, so carefully made that all the strength and delicious flavour of the Cocoa Beans have been brought out to the best advantage. ¼-lb. tins. Regular 25c. each. Tuesday and Wednesday . . . 20c.

"REX" BRAND LAMB'S TONGUE—A very delicious and nourishing article, 12 ounce tins. Regular 35c. each. Tuesday and Wednesday . . . 28c.

EVAPORATED PEACHES—Of a very good quality. Regular 20c. per tin. Tuesday and Wednesday . . . 17c.

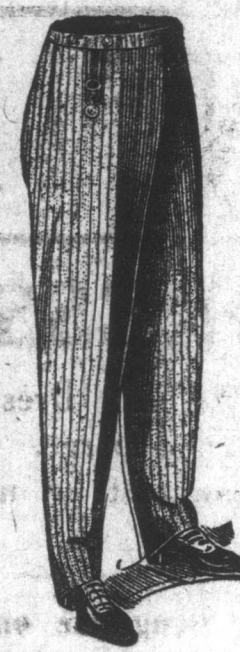
"SWANSDOWN" CAKE FLOUR—Specially prepared for home-made cakes. It makes them lighter and better. 3-lb. packages. Reg. 80c. pkg. Tuesday and Wednesday . . . 72c.

GOLD SEAL BAKING POWDER—Of a very high grade. Especially prepared for STEERS, LTD. 1-lb. tins. Reg. 35c. ea. Tues. & Wednesday . . . 25c.

SEEDS—RAISINS—Various favored brands that are in good demand; 1-lb. cartons. Reg. 20c. each. Tuesday and Wednesday . . . 16c.

HARTLEY'S MARMALADE—Made from fresh gathered Seville Oranges and finest sugar only. 1-lb. Crocks. Reg. 25c. Tues. & Wed. . . 22c.

LIBBY'S SLICED PEACHES—The choicest of the season's growth. They are tinned within a few hours from the time they are picked. This gives the fresh flavour and deliciousness of the fruit when opened; 2½ lb. tins. Reg. 50c. ea. Tuesday and Wednesday . . . 45c.



**Men's Medium Weight Wool Serge Pants.**

With belt straps, cuffs and good durable pockets; roomy sizes for comfort and durability; sizes 4, 5, 6 and 7. Reg. \$6.35 pair. Tuesday and Wednesday . . . \$5.95

**Men's Black Gun Metal Boots.**

Blucher shape with rubber heels. A very comfortable style that will give good service; all sizes. Reg. \$7.35 pair. Tuesday and Wednesday . . . \$6.65

**Good Serviceable Clothes**

when you can buy them at Sale Prices Tuesday and Wednesday.

**Men's Medium Weight Wool Serge Suits.**

In the very newest style. Well made and finished throughout; cut bottom pants and roomy coat and vest. Sizes 3, 4, 5, 6 and 7. Regular \$27.50. Tuesday and Wednesday . . . \$24.50

**Men's Wool Tweed Pants.**

In desirable Dark tints. Three pockets belted hip and cuff bottoms. Special Tuesday and Wednesday, the pair \$2.60

**English Kersey Pants.**

Warm Work Pants in Dark Grey shade with cuff bottoms and strong durable pockets. Sizes 6, 6 and 7. Regular \$4.00 pair. Tuesday and Wednesday . . . \$3.40

**Men's Wool Tweed Suits.**

Rich dark Grey of extra good quality tweed in a serviceable weight for Fall and Winter wear; sizes 4, 5, 6 and 7. Reg. \$22.50. Tuesday and Wednesday . . . \$20.00

**Men's Brown Calf Boots.**

Perfect fitting, blucher style with rubber heels and medium weight, wear-resisting soles. A real serviceable boot for Autumn wear. Reg. \$5.50 pair. Tuesday and Wednesday . . . \$4.96



**SPECIAL OFFER!**

Every customer purchasing goods to the value of \$5.00 and over in our Dry Goods and Showroom Departments, Tuesday and Wednesday, has the privilege of buying

**10 lbs. of Best Granulated Sugar for . . . 35c**

**WE ARE NAMING SPECIAL PRICES ON Serges and Costume Materials**



For Tuesday and Wednesday, it is a decided economy to buy while the prices are low.

**Black and Navy Wool Serge**  
High class English goods of a fine texture, made from the good quality long wool and dyed to hold its color; width 54 inches. Reg. \$1.95 . . . \$1.55 Tuesday & Wednesday

**Wool Skirting Material.**  
Fancy striped patterns suitable for making heavy Autumn Sports Skirts or one piece Dresses: Grey and Fawn effects; 46 inches wide. Special price per yard 75c. Extra Special for Tuesday and Wednesday . . . 69c.

**French Flannels.**  
Fancy striped patterns in big variety, on grounds of Blue, Grey and Fawn; 31 inches wide. Reg. 30c. yard. Tuesday and Wednesday . . . 27c.

**Brown Mixed Coat or Costume Tweeds.**

All wool, woven in fashionable checks of various sizes. Ideal for misses or children's coats or women's costumes; 56 inches wide. Special for Tuesday and Wednesday, per yard . . . \$1.40

**Cotton Dress Serge.**  
In Grey, Maroon, Brown, Navy, Cardinal, Fawn and Black; 26 inches wide, makes up very nicely in children's dresses. Very reasonably priced at 32c. yard. Tuesday and Wednesday . . . 29c.

**Curtain Materials**

Voiles, Marquisettes, Scrims and American Nets, in White, Cream and Ebru and fancy Spotted. The widths are 26, 30, 32 up to 38 inches. This is the balance of that big assortment of Mill Ends we opened a few weeks ago with several new patterns added from our regular stock. You will certainly be able to get just what you want here. Regular 25c. yard. Tuesday and Wednesday . . . 18c

**18c**

**Velvet and Duvelyn Hats**

Here is an assortment that any woman would be delighted to select from. They are mostly trimmed with corded silk ribbon. Some have fancy hat pins, others are made with silver foliage and velvet flowers across the front and some more with folded Duvelyn and effective Crepe de Chine streamers. We have never seen a better variety at so low a price. Reg. \$4.50 or Tuesday and Wednesday

**3.45**

**Women's Felt Hats**

Well made English Felt Hats, with binding, bow and band of Corded Silk Ribbon. Made in assorted sizes, to suit any style of hair. Colors: Orchid, Sky, Fawn, Jade, Manne, Flame, Brown, etc. Regular \$3.00 each. Tuesday and Wednesday . . . \$2.25

**Infants' Bonnets**

Cream Angora, trimmed with silk military braid and murre ribbon. Regular 55c. each. Tuesday and Wednesday . . . 45c.

**Women's Velour Hats**

Assorted sizes especially suitable to wear with bobbed hair. Made with stylish turned-up brim in front and finished with band and bow of corded silk ribbon. A very desirable up-to-the-minute style. Colors: Pansy, Cinnamon and Cherry. Reg. \$7.50 each. Tuesday and Wednesday

**5.90**

**Women's Canton Crepe Jumpers**

Very stylish models with round neck and short sleeves. Some are finished with embroidery and beading; others are trimmed with fancy silk braid. Colors: Copen, Sand, Brown, Navy, Rust, Black and Paisley. Reg. \$4.25 each. Tues. & Wednesday \$3.50



**Light Shirts**

Of striped cotton in various patterns. A very choice selection. All new and desirable; sizes 14½ to 16½. Reg. \$1.50 each. Tuesday and Wednesday . . . \$1.25

Reg. \$2.50 each. Tuesday and Wednesday . . . \$2.45

**Work Shirts**

Khaki Drill and Black with white stripes. An exceptionally good wearing quality. Reg. \$1.85 each. Tuesday and Wednesday . . . \$1.73

**GREY FLANNEL SHIRTS**—With collar buttoned down at points. Good wearing quality. Reg. \$1.30 each. Tuesday and Wednesday . . . \$1.40

**SMALLWARES**

CROWN EXERCISE BOOKS—Water marked "smooth Ivory" paper. These are always in demand. Reg. 7c. ea. Tuesday and Wednesday . . . 6c.

BOUDOIR CLOCKS—Inset in real marble in clouded White or Pink. A good timekeeper, very generously priced for Tuesday- . . . \$1.65

PILLOW TOYS—With dolls face and squeakers. Reg. 8c. each. Tuesday & Wednesday 6c.

BLUE BIRD BROOCHES—Of real enamel and gold finished metal; hinged fastening pin. Special for Tuesday and Wednesday . . . 10c.

TOILET SOAP—Various perfumes in regular size for visitors. Reg. 4c. cake. Tuesday 2 for 5c. and Wednesday . . . 2 for 5c.

ATHLETIC TALCUM POWDER—In medium tins. Reg. 17c. tin. Tuesday and Wednesday 14c.

**And what of BLANKETS?**

IT WILL PAY YOU TO SELECT A PAIR OR TWO TUESDAY AND WEDNESDAY.

ENGLISH WOOL BLANKETS—Of an exceptionally good quality. We positively guarantee these Blankets to be all pure Wool, warm, sanitary and elegant. They'll appeal to you at once as just the right kind of Blankets for warmth and comfort. Extra size, being 70 x 84 inches. Reg. \$10.65 pair. Tuesday and Wednesday . . . \$11.50



**Soft Flakey Cotton Blankets.**

Of real good quality with gay Pink or Blue striped borders; size 60 x 76 inches. Reg. \$3.95 pair. Tuesday and Wednesday . . . \$3.28

**Grey Blankets.**

Fairly heavy make of Fleecy Cotton, with assorted Striped borders, in Colours. Size 60 x 74 inches. Regular \$3.40 pair. Tuesday and Wednesday . . . \$2.85

**Wadded Quilts.**

With coverings of good quality quilt material, in floral and fancy patterns, on grounds of Crimson, Blue or Green; size 48 inches wide by 68 inches long. Reg. \$3.00 each. Tuesday . . . \$2.65 and Wednesday . . .

**2.50 Navy Coatings for 1.85**

The only thing we regret about this is that we have only thirty-four yards to offer, and we will sure this will be picked up quickly. It is ideal material for making heavy Winter Coats for Women and Misses or even for Boys' wear. In 64 inches wide and comes in a rich dark shade of Navy. Special for Tuesday and Wednesday, per yard . . . 1.85

**1.85**

STEERS Ltd.

STEERS Ltd.

STEERS Ltd.

STEERS Ltd.

Bank Messen  
Death at Cambridge  
asked Lobbers Gr  
\$10,000.  
BRIDGE, Mass.  
G. Ross, bank  
re death and  
ended by three  
held up the pair  
with a payroll of  
messenger, ac  
Johnson, of New  
the payroll s  
ral Trust Compan  
ing Company when  
up in a large to  
bank representa  
their delivery ca  
ed them, firing se  
as they came.  
ugh the heart. A  
ason's head.  
sizing the tin box  
roll, the three me  
and drove away in  
ion of Boston.

On the Air

WFG ATLANT

Length 299.8 Met  
1000.  
(Eastern Stand  
Tuesday, Oct. 3  
30 p.m.—Hotel Am  
on Music.  
45 p.m.—15-minute  
quest Selections).  
City Organist.  
30 p.m.—Hotel Mo  
Music. J. Leonard

30 p.m.—"World W  
Alfred J. A. McLu  
30 p.m.—Chalfont  
a Tric.  
30 p.m.—Organ  
ations, Jean Wien  
mor tenor.

STATION W

Bamberger & Co.  
405 Meters—740  
Eastern Daylight  
Tuesday, Oct. 3  
45 a.m.—Bernarr  
Gym Class.  
15 a.m.—Bernarr  
Vigor Gym Class.  
45 a.m.—Bernarr  
me: Folks Gym Class  
30 p.m.—Dorothy  
ite Collars—"The  
45 p.m.—Jack Smith  
30 p.m.—Fred Kome  
Orchestra.  
45 p.m.—Dr. George  
"The Collie."  
15 p.m.—"Words C  
nced."  
15 p.m.—Bill Wate  
ck Evening Telec  
arts.  
30 p.m.—"Man in  
for the children by J  
me and William F.  
wright Newark Stud  
55 p.m.—Talks by

30 p.m.—Hotel Sh  
ic.

RA (291 METRE)

N.B.  
Tuesday, Oct. 3  
p.m. (A.S.T.)—J  
under the directio  
Wright.  
3.30 p.m.—PROG  
Pianoforte Solo (P  
elling), (b) "Wed  
dget)—Miss Mary S  
Soprano Solo—  
Vivian G. McLe  
Violin Solos (a)  
man), (b) "Ball  
amonde" (Schu  
Vivian G. McLe  
Tenor Solos (a)  
ing Me" (Marsh  
y" (Bohm)—Mr  
c.

Readings (a)  
"The Complaint  
erty"—Mrs. Irvin  
Baritone Solos  
le), (b) "March  
"—Mr. Duncan  
Violin Solos  
niawski), (b) "V  
Vivian G. McLe  
Tenor Solos (a)  
er-Helmund), (b)  
ks" (Kountz)—M  
rick.  
Pianoforte (a)  
"Scherzo Waltz"  
J. W. Steves.  
Reading—"The T  
Malcolm.  
Soprano (a) Scler  
Mrs. Katherine D  
Baritone (a) "T  
Heather," (b) "A  
"—Mr. Duncan  
followed by CNR  
ed by Mrs. J. Chas  
e Malcolm, Accom

Radio Bate  
Charged by an E  
VILLARD AT  
SERVICE TA  
M. Seeliger  
HU's Core.  
\$22.21