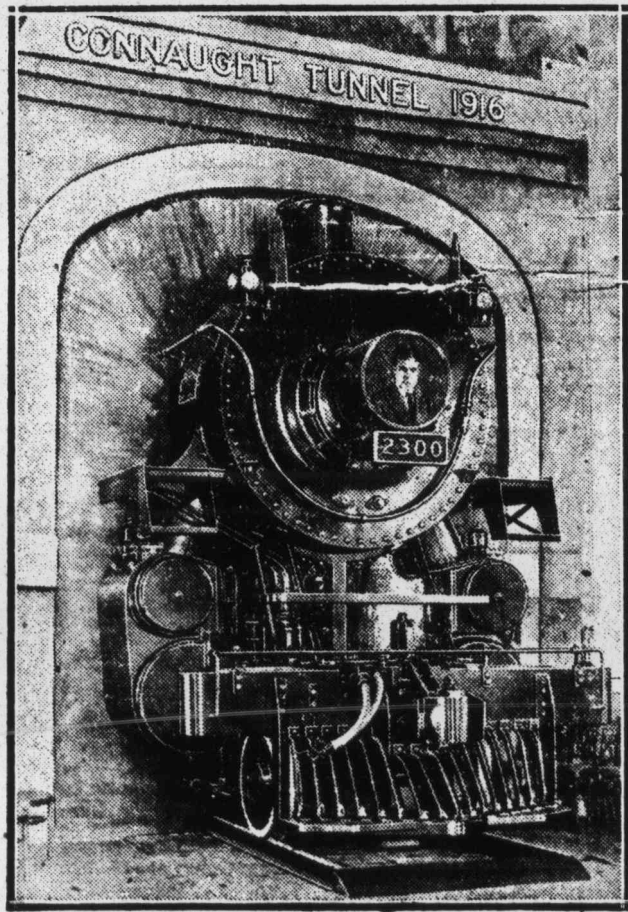


RED ROSE TEA "is good tea"

The ORANGE PEKOE QUALITY makes finer tea and more of it



Smokeless Locomotive

Built of wood at the Angus Shops, this full sized model of one of the latest type locomotives was designed originally as a feature of the dinner decorations at the Chateau Frontenac on the occasion of the Quebec conference of the Canadian Pacific Railway officers. Equipped with bell, whistle and electric lights, not a bolt or bar is lacking to mar the illusion which is that of a perfect engine coming through the wall against which it is placed. The headlight holds a portrait of E. W. Beatty, president of the Canadian Pacific. At the Toronto Exhibition, August 23rd to September 5th, the model will be given a prominent position in the Company's exhibit.

Always Use
Bairds' Super Flavoring Extract
Purest and Best

- Creamers 20 qts. \$1.50**
- White Cups & Saucers 10c**
- 5 Gal. Oil Can with pump 1.75**
- No. 2 Galvd. Tubs 1.60**
- Enam Tea Pots 1-2 price**

We are Getting Back to the Good Old Summer Time.
WHAT ABOUT

A Refrigerator Now?

to keep your Milk, Butter, Fruit and any other food that will spoil if not kept cold.

Our "FROST RIVER" all metal Refrigerator is a dandy We have it on all the way from \$15.00 to \$45

We Have Also A Large Stock of

Oil Cook Stoves from \$9.00 to \$50.00

Many other Lines too Numerous to Mention such as:

Ice Cream Freezers, Milk Pails, Creamers, Bath room Supplies, nice white enamelled Soap Dishes for 25c each.

PLUMBING RANGES FURNACES
B. F. MALTBY
Phone 121 Newcastle, N. B.

SCHWAB TO MAKE SIX-WHEEL MOTORS

New York, July 27—Charles M. Schwab, Chairman of the Board of Directors of the Bethlehem Steel Corporation, announced yesterday he had accepted the chairmanship of the Six Wheel Company of Philadelphia which will manufacture a new type of six-wheel motor bus and truck.

This is the steel man's second important venture in the automobile field. Some time ago he became largely interested in the expanded Stutz company, the stock of which had been given a sensational and later disastrous boost by his friend Allan Kyan in 1920.

The six-wheel idea has been supplied before to trucks designed to carry exceptionally heavy loads. Heretofore such trucks usually have been used with a two-wheel trailer, the front end of which rested on the truck's rear. In the new truck the rear four wheels will be assembled in one unit, and power and brakes will be applied to all four wheels.

In a statement explaining the purpose of the company, Mr. Schwab said in part:

I have entered the automotive industry in the field of large capacity coaches and freight trucks, with the idea of providing a solution of the two outstanding problems of efficient and economical use of the highways by heavy motor vehicles.

"The highway is the roadbed of the motor truck and bus. Conservation of that roadbed is the basic principle of truck and bus operation if such operation is to be of great public service. Herein is the greatest difficulty of highway transportation. Loads sufficiently large to permit of economical operation have presented a serious problem of highway maintenance.

"Having this condition in mind a six-wheel motor vehicle has been developed which requires road impact to about one-fourth that experienced by four-wheel vehicles of like capacity in general use. With 2,941,274 miles of highways in the United States as compared with only 251,176 miles of team railways and 47,159 miles of electric and street railways, the vast opportunity that has awaited the right type of highway vehicle is obvious.

"When railroads first used four wheel trucks under their cars, two wheel trucks became forever obsolete. The new type of six-wheel construction will, in my opinion accomplish the same thing for heavy duty highway motor vehicles."

Swat The Pessimist

There are certain members of the human family who are having their day now. The pessimistic business men go about titter-tattering:

"Business is already falling off this will be a bad year."

The gloom dispensers are having their inning and every forward-looking business man should nail this talk with sledge hammer arguments.

These gloom dispensers will put off the coming of prosperity.

Well, here is one sure fact that economics establish; the more people believe this talk, the greater the likelihood of industrial depression.

A public state of mind is often a great factor in bringing on depression as economic conditions.



"Swat the fly" with GILLETT'S LYE

A teaspoonful of Gillett's Lye sprinkled in the Garbage Can prevents flies breeding

Use Gillett's Lye for all Cleaning and Disinfecting



Costs little but always effective

Justice Department Prepares Reference

The reference to the Supreme Court of Canada of the question of the powers of the Dominion Parliament and the Provincial Legislatures to pass and administer legislation respecting the eight hour day in the industrial undertakings, is in the course of preparation by the Department of Justice. The reference will come before the Supreme court for advisory judgment, and can if appealed to, be carried to the Judicial Committee of the Privy Council.

At the conference held in Ottawa last September between representatives of the federal and Provincial Governments, doubt was expressed as to the jurisdiction of the Dominion under the British North America Act. The purpose of the reference is to ascertain definitely the powers of the Dominion and provinces, and is the result of a recommendation made to the House of Commons in the last days of the session by the Committee on Industrial and International Relations. The Committee made its recommendations after examination of the draft convention adopted by the International Labor Congress of the League of Nations in 1919, limiting the hours of work in industrial undertakings to eight in the day and forty eight in the week.

Before the Supreme Court reference will be dealt with as an ordinary appeal case. It is uncertain yet as to what stand the Provincial Governments will take or what representations they will make before the Supreme Court.

40,000 HARVESTERS WANTED FOR WEST

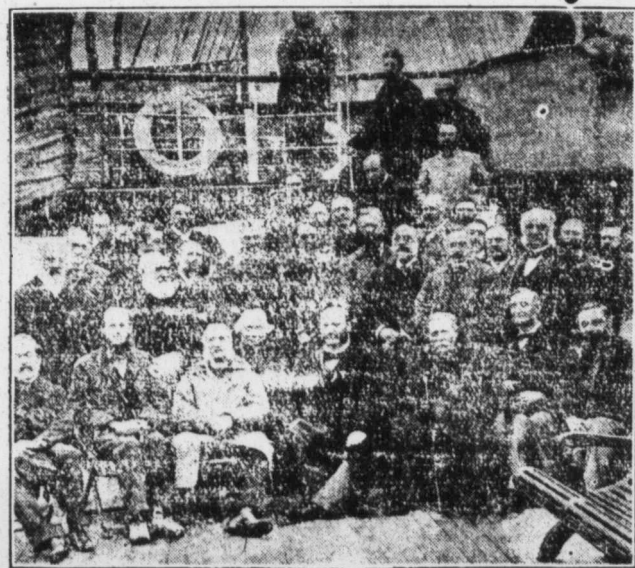
At least 40,000 harvesters will be required this year to gather in the wheat crop of Canada, according to information given out by the Canadian National Railway offices here today. Of this number, approximately 20,000 will have to be secured from Eastern Canada, it being thought that the remainder can be supplied by the Prairie Provinces and British Columbia. This information is the outcome of a conference held at Winnipeg Friday attended by representatives of the Canadian National Rys., the Provincial and Federal Governments, and the Labor Board. It was also brought out at this meeting that harvesting is expected to commence in Manitoba August 20th and in Saskatchewan and Alberta about August 5th.

A further meeting is to be held on August 2nd in Winnipeg to determine the dates when the special rail fares for harvesters will go into effect. This date will be governed by the time when the farmers are prepared to accept harvesters. The representatives of the Canadian National Railways have assured the Government representatives that they are fully prepared to handle this traffic, the National system have approximately four hundred tons of the very latest type of colonist equipment held in readiness for the handling of excursionists, and in addition there are ready for service on the harvest trains a number of specially designed lunch counter cars, all of them larger and better equipped than any other cars of this type in the country.



Free Recipe Book—Write the Borden Co. Limited, Montreal.

"Let the Maritime Provinces Flourish by Their Industries." BORDEN FACTORY-TRURO, N.S.



40 YEARS AGO

A picture of the delegates from the British Association for the Advancement of Science was taken in 1884 on board the Allan liner Parisian. This unique photograph is published through the courtesy of Sir George George Green Hill who forwarded it through the Cunard Steam Ship Company. Sir George arrives at Quebec on Friday August 1st on the Cunard Steamer Caronia with Sir Ernest Rutherford, President of the Association and most of the remaining delegates. He is seen at the top of the picture with arms folded on the rail. He is the oldest living member of the British Association to-day.



Here and There

Glass tubes filled with water are used as incubators for trout eggs at the Ontario Government Hatcheries.

Designed to prevent mildew, a Californian has invented a device which sprays wet or dry sulphur over grape vines.

More than 36 tons of food are required daily to feed hogs on a California ranch and it is distributed by means of an electric railway using side dump cars.

The light producing apparatus of the glow worm and firefly is said to be the most efficient in the world. The glow worm light is eighty times more efficient than a tungsten lamp.

Construction of a million and a half dollar factory building has commenced in Cornwall, Ont., which, when completed, will give employment to 500 hands. Artificial silk will be manufactured from pulpwood.

Crossing from Cnerbourg to Quebec in 5 days 19 hours, the Canadian Pacific S.S. Empress of France created a new record for the trans-Atlantic voyage. Her average speed on the record run was 20.155 knots.

Montreal officers of the Dominion Express Company state that the strawberry shipments this year have been much heavier than heretofore. The Ontario crop ripened quickly, but was easily disposed of.

Alberta Government wolf-hunters will this season again penetrate the barren land and wage war on the timber-wolves which prey on the caribou herds. Last season the hunters killed off several hundred of the predatory beasts in the country north-east of Great Slave Lake.

Beginning in the Autumn, German express trains will be equipped with combination radio and wireless telephones, enabling the sending of wireless messages, telephoning and the giving of radio concerts while the train is travelling at a high rate of speed.

A world's record for his senior two-year old Holstein Friesian Heifer, Williamsburg Pontiac, is claimed by Dr. M. W. Locke, Williamsburg, Ont., as a result of a 36 day test showing production of 2,788.5 pounds of milk and 113.82 lbs. butter fat, equivalent to 148.8 lbs. of butter.

The official Railway Guide, in commenting on the Air service which connects with the Canadian Pacific Railway at Argllers says:—"so far as we are aware this is the first instance on this continent where interchange of passenger traffic between railways and airplanes has been established.

In his address to the Associated Advertising Clubs of the World, at Wemoley, July 17th, E. W. Beatty, president of the Canadian Pacific Railway stated that the amounts spent on colonization by the Canadian Pacific Railway and the Canadian Government from the year 1881 totaled, respectively \$67,000,000 and \$35,000,000.

During the last four years the Canadian Pacific Railway has handled some 85,000 west-bound harvesters. Last year this company inaugurated the lunch-counter car, which afforded facilities hitherto unknown, and, although perhaps not as a direct result of this innovation, over 26,000 men travelled in special trains over Canadian Pacific lines.

The unveiling of a monument to Tom Wilson, earliest guide in the Canadian Rockies featured the first day's meeting of the two hundred and six members of the Trail Riders of the Canadian Rockies at Yoho Camp. Mr. Wilson, who was present at the ceremony and, now sixty-five years of age, resides at Enderby, B.C., discovered Lake Louise and the Yoho in 1882.

A. D. MacTier, vice-president of the Canadian Pacific eastern lines, who awarded to the McAdam team the First Aid Challenge Cup, which they won in competition with teams from North Bay, Toronto, Windsor Station and Angus, stated that since the Canadian Pacific Council of the St. John Ambulance Association was inaugurated in 1909, over twenty thousand employees of the Company have received instruction in First Aid. The last annual report of the St. John Ambulance Association referred to the Canadian Pacific as the "premier railway centre."

The Advocate \$2.00 Yr.