

Ad. for Bargains



Dollar Day Bargains

—in the—
Staple Dept.

7 Yards of Circular Pillow Cotton for \$1.00
Here's a great big bargain, 3 pieces of Circular Pillow Cotton in 42 in. width only; nice fine even thread, Dollar Day Price 7 yards for \$1.00

\$ Day Sheeting Bargain
5 Yards of White Sheeting for \$1.25.
Fine plain White Sheeting, 2 yards wide, selling now at 35c. Sale Price **\$1.25**

5 Yards of Sheeting
Unbleached Twilled Sheeting, 2 yards wide, selling now at 30c. Sale Price **\$1.25**

5 Yards of White Sheeting \$1.65.
Plain White Sheeting 2 1/4 yards wide, fine even thread and no filling, selling now at 45c. Sale Price **\$1.65**

Factory Cotton Bargains
32 in. Factory Cotton, fine even thread, Sale Price **\$1**
14 yards for
35 in. Factory Cotton, worth 11c. yard, Sale Price **\$1**
12 yards for

36 in. Factory Cotton, worth 14c. yard, Sale Price **\$1**
10 yards for
40 in. Factory Cotton, worth 16c. yard, Sale Price **\$1**
8 yards for

Circular Pillow Cotton, 4 Yards for \$1.
Best Canadian-made Circular Pillow Cotton, in widths, 40 in., 43 in., 44 in., worth 30c., 33c., and 35c. yard, Sale Price **\$1**
4 yards for

\$ Day Bargains in Flannelette
A great chance to save on your winter's supply.
Fine White Flannelette, selling now at 16c. yard, Sale Price **\$1**
14 yards for
36 in. Fine White Flannelette, nice soft finish, selling now at 15c. yard, Sale Price **\$1**
9 yards for

6 pieces only of heavy White Flannelette, 35 in. wide, selling now at 18c. yard, Sale Price **\$1**
7 yards for
Heavy colored striped Flannelette, 28 in. wide, in dark greys, blues and pinks, selling now at 11c. yard, Sale Price **\$1**
12 yards for

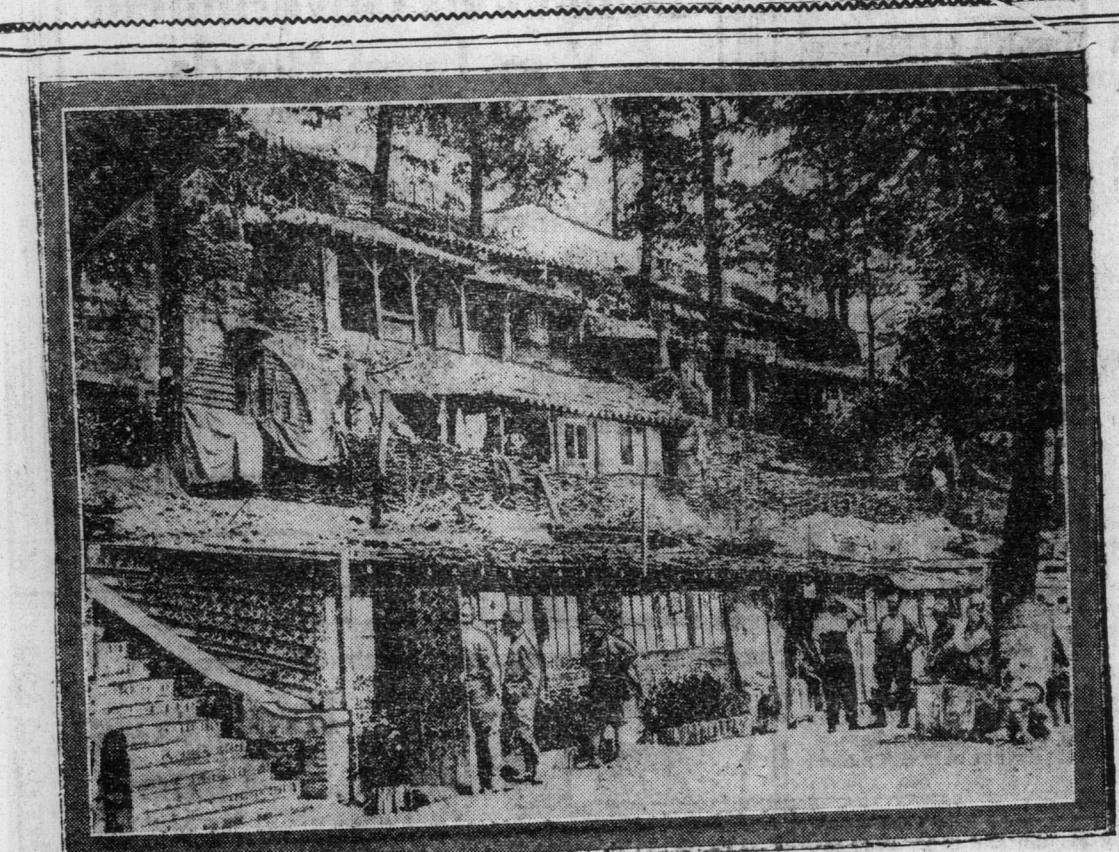
8 pieces only striped Flannelette, 35 in. wide, in grey, blues and pinks, selling now at 15c. yard, Sale Price **\$1**
10 yards for

White Cotton Bargains
180 yards only of Horrocks' English Cotton, selling now at 20c. yard, Sale Price **\$1**
6 1/2 yards for
Fine Long Cloth, 36 in. wide, free from dressing, worth 14c. yard, Sale Price **\$1**
10 yards for

36 in. Nainsook, very fine nice soft quality, selling now at 20c. yard, Sale Price **\$1**
7 yards for
6 1/2 yards for
A good heavy White Cotton, 36 in. wide, worth 16c. yard, Sale Price **\$1**
8 yards for

36 in. Nainsook, very fine nice soft quality, selling now at 20c. yard, Sale Price **\$1**
7 yards for
6 1/2 yards for
A good heavy White Cotton, 36 in. wide, worth 16c. yard, Sale Price **\$1**
8 yards for

Financial, Commercial and Real Estate



COMFORTABLE HOUSES IN WAR ZONE. Official picture shows some of the palatial abodes built by men during the past twenty months. Many hill-sides in present fighting zone are dotted with really comfortable houses. Steps lead to various elevated terraces.

TORONTO MARKETS	
By Special Wire to the Courier.	
Toronto, Ont., Aug. 8.—Hogs advanced 25 cents at the Union. Stock yards to-day, while cattle prices were unchanged. Receipts were 379 cattle, 174 calves, 627 hogs, 233 sheep. Export cattle, choice \$8.25 to \$8.75; medium \$7.50 to \$8.25; common \$6.75 to \$7.75; Butcher cows, choice \$6.75 to \$7.75; medium, \$6.25 to \$7.75; canners \$4 to \$4.50; bulls \$6 to \$7.75; feeding steers \$7 to \$7.50; stockers, choice \$6.75 to \$7.25; light \$6 to \$6.50; Milkers, choice, each, \$60 to \$90; springers \$60 to \$90; sheep, ewes, \$7 to \$8; bucks and culls \$4 to \$7; lambs \$10.50 to \$11.50; hogs, fed and watered \$12.50 to \$13.50; calves \$5 to \$12.	
BRANTFORD MARKETS.	
FRUIT	
Raspberries, box	0 15 to 0 00
Black Currants, box	0 15 to 0 00
Cherries, basket	0 05 to 0 00
Apples, basket	40 to 0 00
Apples, bag	1 00 to 0 00
Strawberries, 2 boxes	0 25 to 0 00
White Cherries, basket	1 50 to 0 00
Red Cherries, basket	1 00 to 0 00
Gooseberries, box	0 10 to 0 00
Red Currants, box	0 10 to 0 00
VEGETABLES	
Tomatoes, box	0 15 to 0 00
Corn, per dozen	0 15 to 0 00
Beans, 2 quarts	0 15 to 0 10
Cucumbers, 3 for	0 15 to 0 15
Beets, 3 bunches	0 15 to 0 10
Carrots, 3 bunches	0 15 to 0 10
Watercress, bunch	0 05 to 0 00
Cauliflower, bunch	0 25 to 0 00
Asparagus, 3 bunches	0 25 to 0 00
Radishes, 2 bunches	0 15 to 0 00
Horseradish, bottle	0 15 to 0 00
Potatoes, bushel	0 15 to 0 25
Parsnips, basket	0 05 to 0 00
Parsley, bunch	0 25 to 0 00
Celery, 2 bunches	0 05 to 0 00
Lettuce, bunch	0 05 to 0 00
Rhubarb, 2 bunches	0 20 to 0 00
Splach, per peck	0 20 to 0 00
DAIRY PRODUCTS	
Cheese, new, lb.	0 18 to 0 20
Do, old, lb.	0 22 to 0 00
Honey, sections, lb.	0 15 to 0 00
Butter, per lb.	0 22 to 0 00
Do, creamery, lb.	0 34 to 0 37
Eggs, dozen	0 30 to 0 00
MEATS	
Ducks, each	0 50 to 0 00
Chickens, pair	1 50 to 2 00
Turkeys, lb.	0 80 to 0 00
Geese	0 40 to 0 20
Beef, round, lb.	0 10 to 0 12
Do, sirloin, lb.	0 10 to 0 12
Do, boiling, lb.	0 10 to 0 12
Beef, round, lb.	0 10 to 0 12
Do, side, lb.	0 10 to 0 12
Bologna, lb.	0 10 to 0 12
Ham, smoked, lb.	0 10 to 0 12
Do, boiled, lb.	0 10 to 0 12
Lamb, hindquarter	1 00 to 0 00
Do, hind leg	1 00 to 0 00
Chops, lb.	0 25 to 0 00
Mutton, lb.	0 15 to 0 10
Beef hearts, each	0 12 to 0 00
Kidney, lb.	0 18 to 0 10
Pork, fresh loin, lb.	0 20 to 0 00
Dry chops, lb.	0 22 to 0 00
Dry salt pork, lb.	0 20 to 0 00
Spare ribs, lb.	0 18 to 0 00
Bacon, back, lb.	0 25 to 0 00
Sausage, lb.	0 18 to 0 00

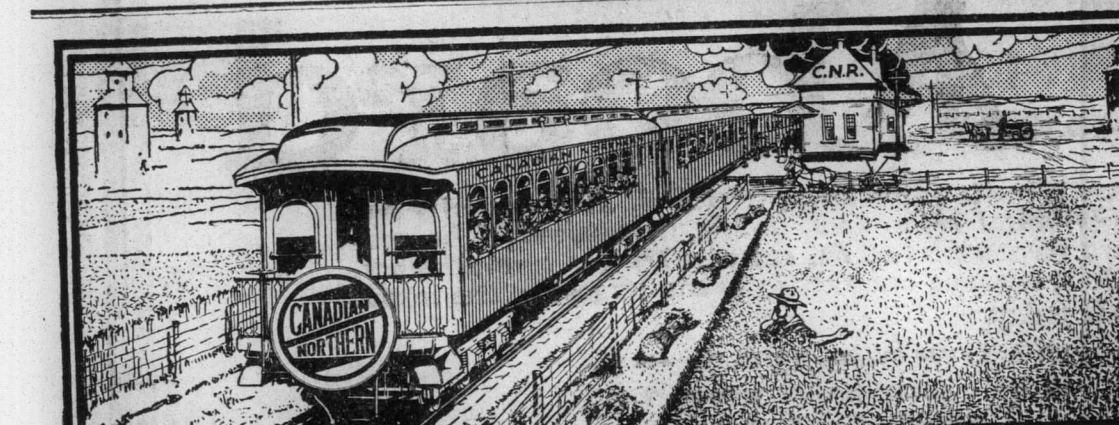
BANK OF HAMILTON

ESTABLISHED 1872

THE FOREHAND MAN
is the one who plans his own future with care and foresight. When his opportunity comes, he is ready for it. The possession of a Bank Account is of first importance. Our Savings Department will help you.

BRANTFORD BRANCH
C. L. LAING, Manager

Capital Authorized \$5,000,000
Capital Paid-up - \$3,000,000
Surplus - \$3,475,000



40,000 FARM LABORERS WANTED!

\$12.00 TO WINNIPEG

SPECIAL TRAIN SERVICE.

Leave Toronto Union Station 11:00 p.m.
August 17th, 19th, 31st and Sept. 2nd.

THROUGH TRAINS WITH LUNCH COUNTER CARS ATTACHED.

Excursion Tickets will be sold on the above dates. Tickets from Flag Stations may be purchased on special trains.

DESTINATION TERRITORY.—Tickets one-half cent per mile—minimum 50c.—to Winnipeg or on behalf of Winnipeg to any station east of Calgary, Edmonton and Tannis, Alta.

RETURN FARE AND LIMIT.—One-half cent per mile—minimum 50c.—to Winnipeg or on behalf of Winnipeg to any station east of Calgary, Edmonton and Tannis, Alta.

For tickets and information apply to JOHN. S. DOWLING & CO., Limited, Agents.

CANADIAN NORTHERN ALL THE WAY

GRAND TRUNK RAILWAY.

MAIN LINE—EAST.

Departures.

6.50 a.m.—For Dundas, Hamilton and East.

7.05 a.m.—For Toronto and Montreal.

4.51 a.m.—For Hamilton, Niagara Falls and East.

8.30 a.m.—For Hamilton, Niagara Falls and intermediate stations.

10.29 a.m.—For Hamilton, Toronto and East.

1.57 p.m.—Hamilton, Toronto, Niagara Falls and East.

1.56 a.m.—For Hamilton, Toronto, Niagara Falls and intermediate stations.

6.00 p.m.—For Hamilton, Toronto, Niagara Falls and East.

8.32 p.m.—For Hamilton, Toronto and East.

MAIN LINE—WEST.

Departures.

3.21 a.m.—For London, Detroit, Port Huron and Chicago.

8.36 a.m.—For Detroit, Port Huron and Chicago.

8.53 a.m.—For London, Detroit, Port Huron and intermediate stations.

9.37 a.m.—For London, Detroit, Port Huron and Chicago.

9.55 a.m.—For London, Detroit, Port Huron and intermediate stations.

6.52 p.m.—For London, Detroit, Port Huron and Chicago.

7.32 p.m.—For London, Detroit, Port Huron and Chicago.

8.34 p.m.—For London, Detroit and intermediate stations.

Buffalo & Goderich Line.

Leave Brantford 10.05 a.m.—For Buffalo and intermediate stations.

Leave Brantford 6.00 p.m.—For Buffalo and intermediate stations.

West.

Leave Brantford 10.05 a.m.—For Goderich and intermediate stations.

Leave Brantford 8.15 p.m.—For Goderich and intermediate stations.

Galt, Guelph and North

Leave Brantford 6.50 a.m.—For Galt, Guelph, Palmerston and all points north.

Leave Brantford 8.55 a.m.—For Galt, Guelph and Palmerston.

Leave Brantford 3.55 p.m.—For Galt, Guelph, Palmerston and all points north.

From Brantford 8.40 p.m.—For Galt and Guelph.

Brantford & Tillsonburg Line.

Leave Brantford 10.35 a.m.—For Tillsonburg, Port Dover and St. Thomas.

Leave Brantford 5.15 p.m.—For Tillsonburg, Port Dover and St. Thomas.

From South—Arrive Brantford, 8.45 a.m., 5.10 p.m.

G. T. R. Arrivals.

From West—Arrive Brantford, 1.56 a.m., 7.05 a.m., 9.30 a.m., 10.29 a.m., 1.56 p.m., 3.50 p.m., 6.00 p.m., 8.32 p.m.

From East—Arrive Brantford, 8.55 a.m., 9.15 a.m., 9.37 a.m., 3.52 p.m., 6.52 p.m., 7.32 p.m., 8.10 p.m.

Buffalo & Goderich.

From East—Arrive Brantford, 9.52 a.m., 8.05 p.m.

From West—Arrive Brantford, 10.00 a.m., 5.42 p.m.

W. G. & B.

From North—Arrive Brantford, 9.05 a.m., 12.30 p.m., 4.29 p.m., 8.53 p.m.

CHICAGO LIVE STOCK.

By Special Wire to the Courier.

Chicago, Aug. 8.—Cattle, receipts, 7,000; market weak; native beef cattle \$6.90 to \$10.45; stockers and heifers \$5.00 to \$7.85; cows and calves \$4 to \$7; feeding steers \$7 to \$7.75; springers \$6 to \$7.25; light \$6 to \$6.50; Milkers, choice, each, \$60 to \$90; sheep, ewes, \$7 to \$8; bucks and culls \$4 to \$7; lambs \$10.50 to \$11.50; hogs, fed and watered \$12.50 to \$13.50; calves \$5 to \$12.

EAST BUFFALO.

By Special Wire to the Courier.

East Buffalo, Aug. 8.—Cattle receipts 125; steady.

Veal receipts, 150; active; \$4.50 to \$12.25.

Hogs, receipts 5,000; active, heavy and mixed \$10.45 to \$10.50; yorkers \$10.15 to \$10.50; pigs, \$10.15 to \$10.25; roughs \$9 to \$9.10; stags \$6.50 to \$7.75.

Sheep and lambs, receipts 800; active; lambs \$7 to \$11.25; yearlings \$5.50 to \$9.50; wethers \$8 to \$8.25; ewes \$4 to \$7.75; sheep, mixed \$7.75 to \$8.

BRANTFORD MUNICIPAL RAILWAY.

For Paris—Five minutes after the hour.

T. H. & B. RAILWAY.

For Hamilton, etc.—7.32 a.m., 11.32 a.m., 2.27 p.m., and 6.47 p.m.

For Waterloo—6.46 a.m., 11.32 a.m., 4.36 p.m. and 9.22 p.m.

LAKE ERIE & NORTH-EASTERN RAILWAY.

EASTERN STANDARD TIME.

SHEMON TO GALT.

Northbound Trains.

Daily Except Sunday Dy. Dy. Dy. Dy. Dy. Dy. Dy. a.m. a.m. a.m. p.m. p.m. p.m. p.m. p.m.

S'coo 7.10 9.30 11.10 1.10 3.10 5.10 7.10 9.10

W'rd 7.25 9.45 11.25 1.25 3.25 5.25 7.25 9.25

Q'rd 7.38 9.58 11.38 1.38 3.38 5.38 7.38 9.38

M.P. 7.43 9.43 11.43 1.43 3.43 5.43 7.43 9.43

Br'rd 7.53 9.53 11.53 1.53 3.53 5.53 7.53 9.53

Lv. 8.00 10.00 12.00 2.00 4.00 6.00 8.00 10.00

Paris 8.20 10.20 12.20 2.20 4.20 6.20 8.20 10.20

G'ria 8.35 10.35 12.35 2.35 4.35 6.35 8.35 10.35

M'n St. 8.45 10.45 12.45 2.45 4.45 6.45 8.45 10.45

Galt 8.50 10.50 12.50 2.50 4.50 6.50 8.50 10.50

C.F.R. Galt

Galt to Simcoe.

Southbound Trains.

Daily Except Sunday Dy. Dy. Dy. Dy. Dy. Dy. Dy. a.m. a.m. a.m. p.m. p.m. p.m. p.m.

Galt 6.50

M'n St. 7.00

G'ria 7.10 9.10 11.10 1.10 3.10 5.10 7.10 9.10

Paris 7.30 9.30 11.30 1.30 3.30 5.30 7.30 9.30

Q'rd 7.35 9.35 11.35 1.35 3.35 5.35 7.35 9.35

W'rd 7.45 9.45 11.45 1.45 3.45 5.45 7.45 9.45

S'coo 7.55 9.55 11.55 1.55 3.55 5.55 7.55 9.55

Lv. 8.00 10.00 12.00 2.00 4.00 6.00 8.00 10.00

Paris 8.20 10.20 12.20 2.20 4.20 6.20 8.20 10.20

G'ria 8.35 10.35 12.35 2.35 4.35 6.35 8.35 10.35

M'n St. 8.45 10.45 12.45 2.45 4.45 6.45 8.45 10.45

Galt 8.50 10.50 12.50 2.50 4.50 6.50 8.50 10.50

C.F.R. Galt

BRANTFORD & HAMILTON ELECTRIC RY.

CITY TIME.

Leave Brantford—6.35 a.m.; 8.00 a.m.; 9.00 a.m.; 10.00 a.m.; 11.00 a.m.; 12.00 p.m.; 1.00 p.m.; 2.00 p.m.; 3.00 p.m.; 4.00 p.m.; 5.00 p.m.; 6.00 p.m.; 7.00 p.m.; 8.00 p.m.

Arrive Hamilton—7.40 a.m.; 8.40 a.m.; 9.40 a.m.; 10.40 a.m.; 11.40 a.m.; 12.40 p.m.; 1.40 p.m.; 2.40 p.m.; 3.40 p.m.; 4.40 p.m.; 5.40 p.m.; 6.40 p.m.; 7.40 p.m.; 8.40 p.m.

FOR IMMEDIATE SALE

One of the finest and most centrally located homes in this city in splendid residential district; large drawing rooms, library dining room, kitchen, pantries, 4 bedrooms, clothes closets, bath complete; splendid electric chandeliers, 3 compartment cellar, furnace, fine large verandahs. For price and terms apply at our office.

We also offer for sale or to rent 52 46-100 Acre Farm, 2nd Con. Township of Brantford, 1st range east of Mt. Pleasant Road, frame house, containing 6 rooms, nearly new, good barn, orchard of 30 or 40 cherry trees, peach trees and 100 apples. Possession at once. Easy terms for payment, or would rent at reasonable figure.

For Sale by Tender

We offer for sale by tender, tenders to be received at this office up to and including Tuesday, August 15th, at 12 o'clock noon, Residence 130 Peel street, being 2 storey frame residence, containing parlor, dining room, kitchen, 3 bedrooms, 3 piece bath, 2 clothes closets, city and soft water, gas, etc. Lot 49 ft. wide. The highest or any tender not necessarily accepted. Terms one-third cash, balance 6 per cent payable half yearly.

S. G. READ & SON, Limited
129 Colborne Street Brantford

"The Pillars of Society"

By A. G. Gardiner

This is a third book of the series, which include Prophets, Priests and King, and War Lords. There is no series of books more interesting at the present time. Bound in cloth.

Price 30c Each

STEDMAN'S BOOKSTORE

LIMITED
Both Phones 569 160 COLBORNE ST.

MOFFAT GAS RANGES

All Canada Ranges are fitted with spring adjustment valve, star one-piece burner, safety door catch, enamel dirt tray, enamel broiler pan.

All Canada Ranges are the best that can be produced in Canada, or elsewhere, and are guaranteed to give perfect satisfaction.

Prices \$9 to \$70

Clark Jewel Oil Stoves, Hot Plates, Ovens, Etc

S. STERNE

Bell Phone 1657 120 MARKET ST. Open Evenings

\$ DAY

Building Lots that will stand inspection in residential District. Only \$1 Down and \$1 a week, or more, payments can be made monthly, if wanted. On sale THURSDAY, AUG. 10, 1916, only on these terms. Enquire at office. We will take you to see these lots.

J. T. SLOAN

Auctioneer and Real Estate General Insurance Broker
10 Queen St. (next to Creighton's) Office Telephone 2043. Residence 2118

FOR SALE

Good house in East Ward, eight rooms, gas for cooking, electric lights, good decorations. Sold on payments.

Good cottage on Palace St. for sale at a bargain.

Good cottage in East Ward, fine location, in good condition.

Any kind of house desired for sale in every ward in the city. Also good farms in good locations.

S. P. Pitcher & Son
Auctioneers and Real Estate Brokers
—Issuers of Marriage Licenses—
45 MARKET ST.
Phones: Of. 951, Home 829, 818

FOR SALE

100-acre farm on main road. A choice, up-to-date home, beautiful red brick house in A1 condition. Good bank barn and other outbuildings. One mile to school. Soil sand loam and clay loam. See this if you want something good. Price \$7,000.

50 acres, comfortable frame house and barn, drive barn and hen house; 25 acres under cultivation, balance good bush. This is a good dairy farm. Price \$3,000. Will exchange for city property.

L. Brand

Real Estate Fire Insurance
7 South Market St.
Phone 1333; Open Evenings

OUR BIG Motor Truck

is for long distance moving and the rapid handling of Pianos, Furniture, etc.

We do all kinds of teaming and carting.

J. T. Burrows
CARTER and TEAMSTER
226-236 West Street
Phone 354.

THE GIBSON COAL Co.

D. L. & W. Scranton Coal

OFFICES:
154 Clarence St.
150 Dalhousie St
52 Erie Ave.

Old Country Shipments

See us if you are sending large or small shipments to any part of Europe.

Our system effects a saving for you in most cases.

Jno. S. Dowling & Co.
LIMITED
BRANTFORD, ONT.

Wood's Peppermint Cure

The Great English Remedy. Tones and invigorates the whole nervous system, makes new blood in old veins. Cures Nervous Debility, Mental and Brain Worry, Depression, Loss of Memory, Flitting Memory, Heart, Failing Memory. Price \$1 per box, six for \$5. One will please, six will cure. Sold by all druggists or mailed in plain pkg. on receipt of price. New pamphlet mailed free. THE WOOD MEDICINE CO., TORONTO, ONT. (Incl. Study Notes.)