

FAIRBANKS-MORSE

Improved Skidded and Portable
Evaporator Tank

GASOLINE ENGINES

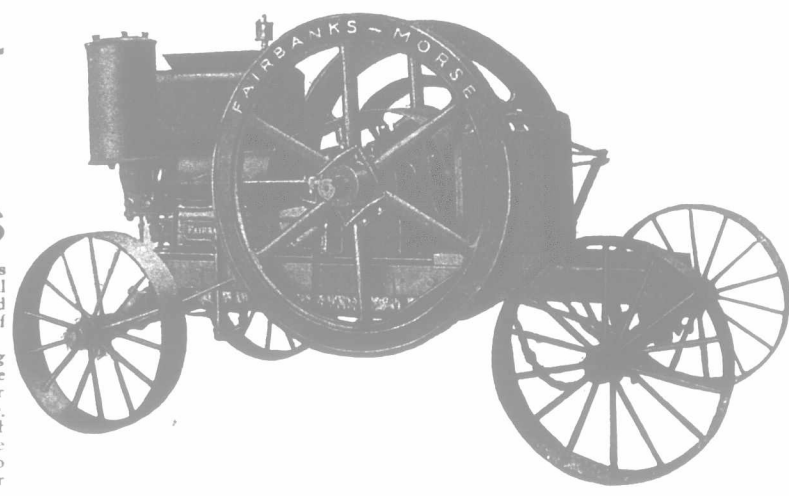
These engines are built along the same lines as our Fairbanks-Morse Standard Horizontal Engines, with the exception that our improved Cast Iron Evaporator Tank is cast on top of cylinder, as shown in illustration.

No cooling tank is required, thus overcoming the difficulty of carrying the usual great volume of water. The lubrication difficulties of Air Cooled Engines are overcome in the above. There is very little water in the tank to take off by drain in the cold weather, thus saving time and trouble, and there is no water pump to freeze up. We provide a shield to prevent water slashing out of the Hopper Jacket.

The skidded engine is a very desirable outfit where it is necessary to move the engine, providing a means whereby the engine can be drawn about on its iron-shod runners, or can be placed on a farm truck or a bob sled.

The engine itself is Fairbanks-Morse in every respect, and ensures to the customers the best there is in Gasoline Engine construction.

Send for our FREE CATALOGUE GE 102, showing our full line of Fairbanks-Morse Vertical and Horizontal Gasoline Engines and Machinery for farm work. It means money saved for you. Write to-day.



The Canadian Fairbanks Company

(LIMITED).

Montreal, St. John, N. B., Toronto, Winnipeg, Calgary, Vancouver.
FACTORY: TORONTO, ONT.

Make this 60-Day Test of Brantford Roofing—then Test Any Other Make

Write us, or your dealer, for sample of *Brantford Asphalt Roofing*. Place it in water for sixty days. When you remove it, rip open with heavy knife, and you'll find insides—the vital part—perfectly dry, life-like, solid—as *before* test. Just think of severeness of this test! The result is evidence you *cannot* overlook. Then make this test with *any other* Roofing. You'll find the wood pulp—jute or cotton-cloth insides soaked—softened—lifeless. It *cannot* withstand severe weather, which is, at its worst, *not one-twentieth* so severe as *Brantford's Test*. Wood pulp is like paper. It acts like paper, when soaked—wilts away. How could you expect such a foundation to fight off Roofing Enemies! For resistance, it *must* depend upon animal fat, grease, or other refuse coating, themselves veritable mines of danger. They evaporate—wear off—expose shameful foundation to awaiting enemies. This coating cannot *prevent* penetration—protect defenceless insides from harm. But *Brantford Asphalt Roofing* Foundation is one sheet of evenly-condensed, long-fibred *pure Wool*, with life and body of its own. A *secret* mixture of *Asphalt* is *forced* into it, soaking every fibre. After mixture dries, foundation possesses resisting-power *no amount* of soaking or bending can effect.



Brantford Roofing

after special Water-proof Coating, into which Silica Sand is rolled under pressure, is applied, becomes a solid mass of resistance. It is weather, acid, alkali, frost, water-proof. *Cannot* freeze, crack or melt. Wonderfully pliable. Brantford has but one cost—first. Write for free Book and Samples.

Brantford Asphalt Roofing, No. 1, 2, 3.
Brantford Rubber Roofing, No. 1, 2, 3.
Brantford Crystal Roofing, one grade only, (heavy).
Mohawk Roofing, one grade only.
BRANTFORD ROOFING CO., Ltd., BRANTFORD, CAN.

WINDMILLS

THE HAYWARD WINDMILL CO., LTD.,
LONDON, CANADA.

Manufacturers of the Hayward

Less Friction Windmill

A new improved design of windmill. Mechanically correct. A marvel of simplicity and strength. If interested at all in windmills, send name and address for free catalogue.

Factory: 663 Bathurst St., London, Ont.

PAINT WITHOUT OIL

AGENTS WANTED.

Remarkable Discovery That Cuts Down the Cost of Paint Seventy-five Per Cent.

A prominent manufacturer has discovered a process of making a new kind of paint without the use of oil. He calls it Powderpaint. It comes in the form of a dry Powder. All that is required is Cold Water to make a Paint, Weather-proof, Fire-proof, and as durable as any oil paint. It adheres to any surface—wood, stone or brick. Spreads and looks like oil paint, and costs about one-fourth as much.

A farmer can paint his House, Barns and Fences at very little outlay. One coat is equal to two coats of oil paint. Write the

POWDERPAINT COMPANY,
TORONTO.

for full information and catalogue, with color card and price list.

\$1,500 MADE ON CIDER
Write for Free Catalogue. Describes and illustrates our line of the
ORIGINAL MT. GILEAD HYDRAULIC CIDER PRESSES
Built in sizes 10 to 400 barrels per day. Presses for all purposes. Also Steam Evaporators, Apples-Butter Cookers, Vinegar Generators and everything for the Cider and Vinegar-maker. We can show you how \$1,500 clear profit can be made.

HYDRAULIC PRESS MFG. CO., 110 Lincoln Ave., Mt. Gilead, Ohio



A Foolish Question

SHALL IT BE A

De Laval Cream Separator

Or an Imitation?

1,000,000 De Laval Separators Sold

THE DE LAVAL SEPARATOR CO.

173-177 William Street, MONTREAL
VANCOUVER WINNIPEG



What was loss last year can be profit this year

Remember all the old-time loss of fruit and vegetables through windfalls, early ripenings and overcrowded markets? Well, all this loss of money can be avoided—turned into real profit. And the marvellous Modern Canner does it! It uses the same fine work as those great Canning Factories—but on a smaller scale. You have a regular Canning Factory in your own Home, on your own Farm, or in your Grocery Store. Just think! The Modern Canner Cans 1,000, 2,000 and 4,000 tins in 10 hours—easily, simply, without waste its work is profit. Three sizes: \$30, \$50 and \$75—but it honestly pays for itself the first season.

The Modern Canner Co.

Canadian Branch: 86 King St., St. James, Ont.



COLUMBIA

Double-Disc
Records

Fit Any Machine
85c

If you ever spent 75 cents for a disc record, it won't take you long to see the double value of a Columbia Double-Disc Record at 85 cents—a different selection on each side. Hear one! Get a catalog!

Toronto Phonograph Co.

LIMITED

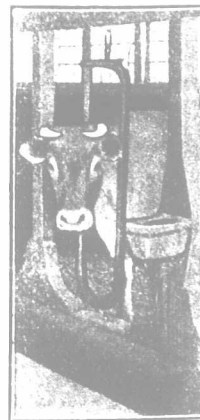
40 Melinda St., Toronto, Can.



RUSH'S U-BAR STEEL STANCHIONS

are swinging stanchions! See the comfort and freedom they give cattle. Are strongly made to stand roughest usage, and save lumber and labor in fitting up cow stables. Saves time in tying cattle, because the latch is easily operated and absolutely secure. Made in five sizes. Write for catalogue and prices.

A. M. RUSH,
King St.,
Preston, Ontario.



PLEASE MENTION THIS PAPER.