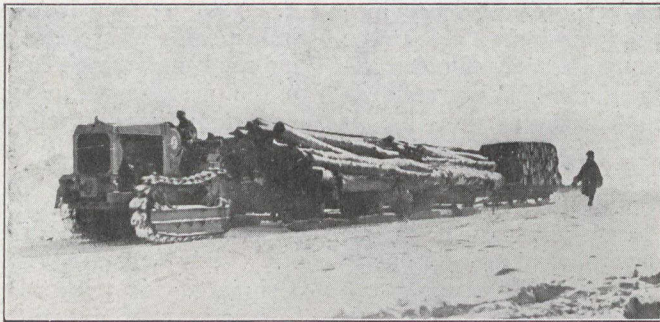


# The Tractor for Logging Lumbering and Hauling



## JT

TRACTOR HAULING LOAD OF 24 TONS  
AT 20° BELOW ZERO.

The **JT** is dimensioned for its ability to go ahead where there is no road—under trees and between them—its traction is sure in the underbrush, on solid, swampy or sandy ground—its control is sensitive and positive—it can be handled to the fraction of an inch in narrow passages.

It will snake logs when teams are out of the question.

The **JT** will turn in a radius of 6 ft., its width over all is 60 inches, and it has a caterpillar traction area of 1,628 sq. inches.

Write for Catalogue and full Particulars.

## The General Supply Co. of Canada Limited

OTTAWA, ONT.

MONTREAL,

TORONTO,

WINNIPEG,

VANCOUVER,

NORTH BAY,

MONCTON.