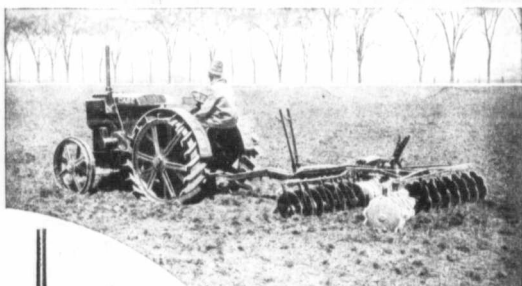




Plowing



Discing



The
HANDY
CASE 10-18
KEROSENE TRACTOR



A BETTER TRACTOR CAN'T BE BOUGHT

Compare different makes of tractors and you will find the Case 10-18 far in advance of today's offerings. For instance, it is the first to provide a one-piece main frame with a four-cylinder motor, mounted cross-wise. This is only one of the dozens of betterments. This one-piece frame casting constitutes a dustproof housing for the rear axle, bull pinion shaft, transmission and the bearings for these parts.

This construction also brings rigidity, reducing vibration, preventing disalignment. Power is conserved, while we multiply strength.

The belt pulley is mounted on engine crankshaft, doing away with bevel gears. It is part of the tractor—not an extra-cost accessory.

The Case Syphon Thermostat insures complete combustion of gasoline or kerosene, and prevents raw fuel from passing by the pistons and diluting oil in the crank case.

The Radiator has a cast frame. The Core is removable—in and tube non-clogging type.

A Case Air-Washer prevents grit or dust from getting into the cylinders. These are but a few of the greatest advancements in tractor history. Case offers you today, NOW what others are planning to adopt.

The Case 10-18 is rated according to conservative Case policy.

It actually develops nearly 14 horsepower on the drawbar and about 24 horsepower on the pulley. Thus we insure abundant reserve power.

Our booklet and specifications point out dozens of other advancements, all of which demand your consideration before you buy.

Write us today for a copy. Or Visit a Case dealer.

J. I. Case Threshing Machine Company, Inc.

Founded 1842.

RACINE, WISCONSIN, U. S. A.

Seeding

Harvesting

