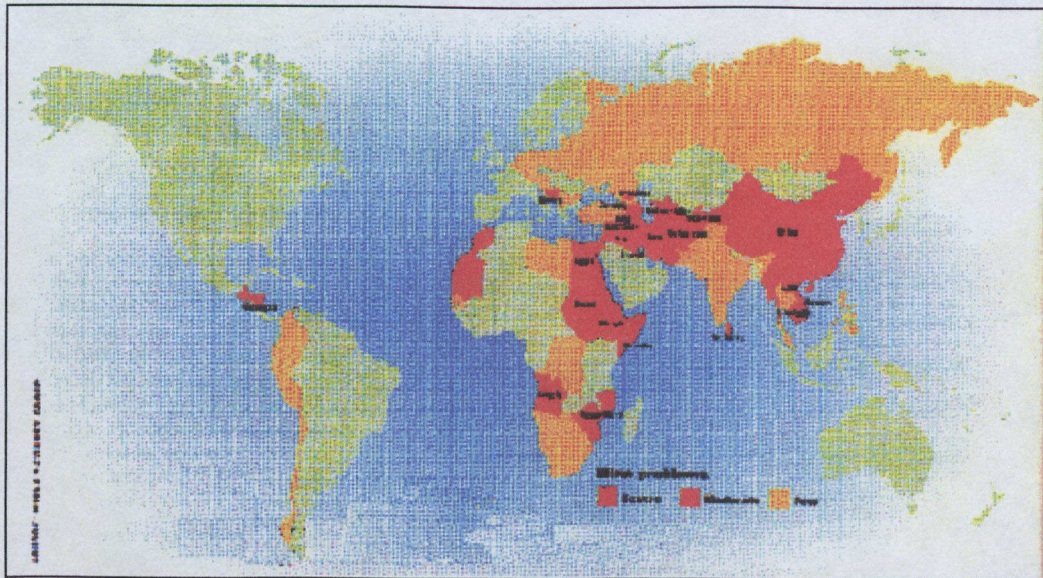
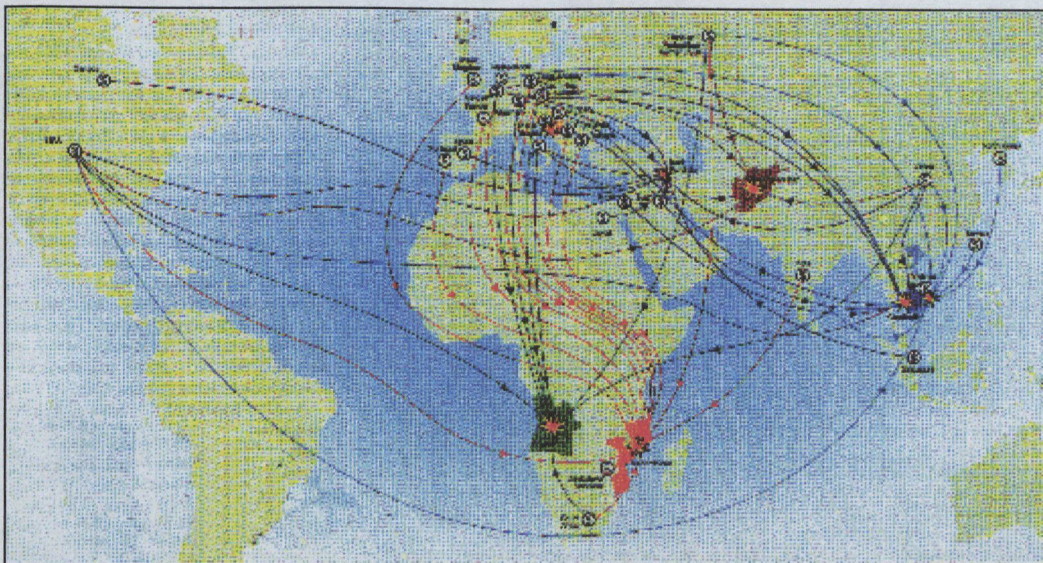


Where the Mines Are



This map shows the severity of land mine infestation (both antipersonnel and anti-tank) in the world. Some of the less affected countries (like Belgium and Netherlands) have land mines left over from the Second World War.

Where the Mines Came From



In most arenas of conflict, the mines used were not indigenously produced. This map illustrates the sources for the land mines in a handful of countries where the problem is particularly severe. In Bosnia the mines came mainly from the former Yugoslavia.