

NATIONAL CLUB BUILDING  
BAY STREET  
TORONTO, ONT.

SCALE 1/4 IN. = 1 FOOT.

*Sproatt & Rolph Architects*  
*S. G. Curry Consulting Architect*

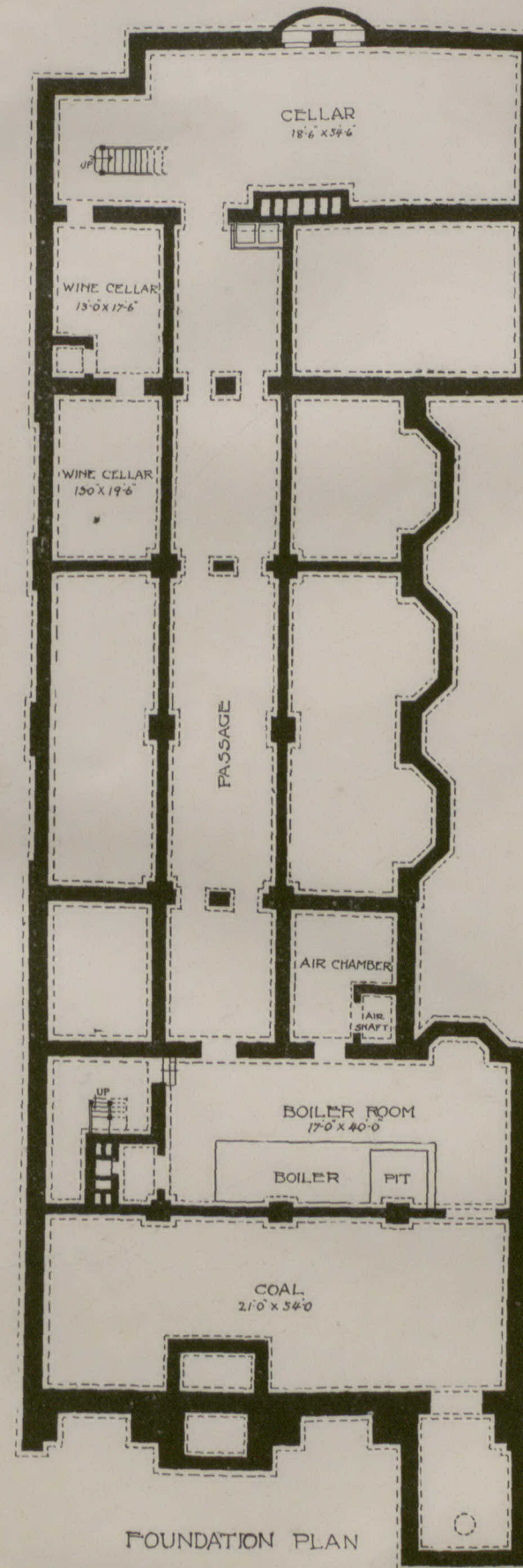


SECTION

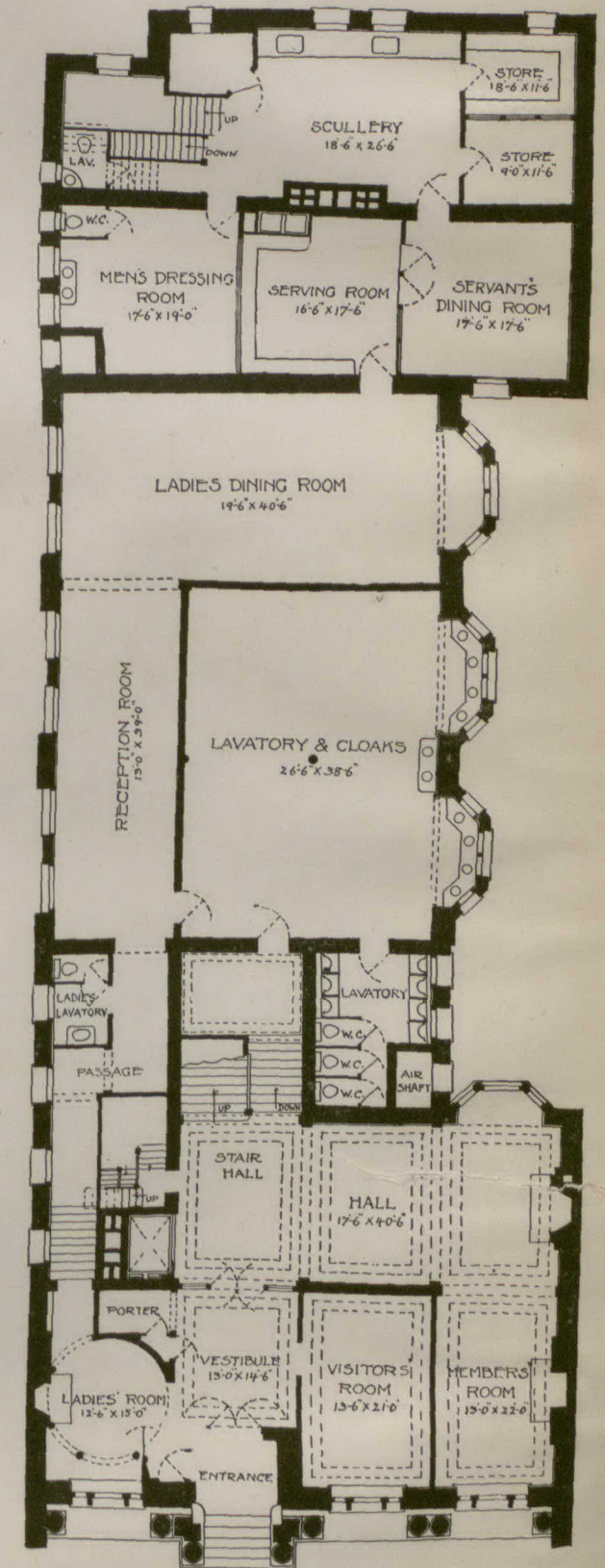
BAY STREET ELEVATION

NATIONAL CLUB BUILDING  
BAY STREET  
TORONTO, ONT.

SPROATT AND ROLPH ARCHITECTS  
S. G. CURRY CONSULTING ARCHITECT



FOUNDATION PLAN



GROUND FLOOR PLAN

NEW CLUB HOUSE FOR THE NATIONAL CLUB, BAY STREET, TORONTO.

MESSRS. SPROATT & ROLPH, ARCHITECTS.  
MR. S. G. CURRY, CONSULTING ARCHITECT.