

Miners Wanted

TO CHEW,

PAY ROLL

Plug Tobacco

WANTED.

At the several collieries of the Dominion coal co. Limited, skilled coal miners and mine laborers.

Apply on the works Or by letter

Dominion Coal Company, Ltd

Genuine Garlock Packings

FOR ALL PURPOSES.

**Pipe and Boiler Coverings,
ENGINEERS SUPPLIES.**

also

"Tauril" High Pressure Jointing
the Best Sheet Packing yet
Produced.

THE GARLOCK PACKING CO.
HAMILTON, ONTARIO.

Used by Collieries in Lancashire, Staffordshire
& Yorkshire

'XTERRA'

COLLIERY LAMP OIL

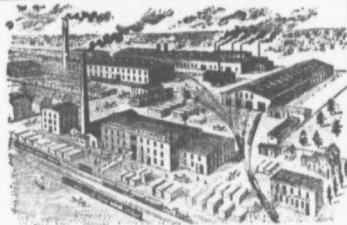
For Marsul, Murelet Deflector or Closed Lamp

PURE WHITE FLAME

LOW PRICE

E. WOLASTON, Partner in MANCHESTER

Sole Representatives for Canada, AUSTEN BROS.,
41 Jifax, N. S.



—MANUFACTURERS OF—

RAILWAY
STREET and
MINING

CARS,

CAR WHEELS
FORGINGS &
CASTINGS

Church Pews,
Fittings for Stores, Schools, &c
A SPECIALTY.

Large Stocks of Foreign and Domestic Lumber on Sale.

**Rhodes, BUILDING MATERIALS
Curry & co., Ltd. GENERAL**

Branch
ROBBIE STREET,
HALIFAX, N. S.

AMHERST, N. S.

INTERCOLONIAL RAILWAY

On and after MONDAY, April 10 1907 trains
run daily, Sunday excepted, as follows:—

—TRAINS LEAVE STELLARTON—

No 144 Mixed for Hopewell	5.55
No 79 Mixed for Trenton	6.05
78 Mixed for Hopewell	6.40
18 Express for Halifax, and St. John	7.40
21 Mixed for Pictou Landing	7.45
62 Mixed for Pictou	8.30
55 Mixed for Mulgrave	11.10
19 Express for Sydney	11.15
28 Mixed for Pictou	12.55
56 Mixed for Truro	13.40
129 Mixed for New Glasgow	13.45
20 Express for Halifax and Montreal	15.30
140 Mixed for Pictou	15.35
101 Mixed for Pictou Landing	16.50
22 Mixed for Hopewell	17.05
83 Express for the Sydneys	18.10
32 Mixed for New Glasgow	18.50
36 Express for Halifax and St. John	19.50
17 Express for New Glasgow	21.20
66 Express for Pictou	21.40

—TRAINS ARRIVE AT STELLARTON—

79 Mixed from Hopewell	6.30
78 Mixed from Trenton	5.55
61 Express from Pictou	7.35
18 Express from New Glasgow	7.35
21 Mixed from Hopewell	8.00
55 Mixed from Truro	9.20
100 Mixed from Pictou Landing	10.55
28 Mixed from New Glasgow	10.55
27 Mixed from Pictou	11.90
56 Mixed from Mulgrave	12.30
19 Express from Halifax and St. John	13.30
20 Express from Sydney	15.30
82 Mixed from Pictou	15.35
30 Express from Halifax and St. John	17.00
83 Express from Halifax and St. John	18.10
77 Mixed from Hopewell	18.45
62 Mixed from Pictou	19.35
36 Express from the Sydneys	21.25
17 Express from New Glasgow	21.55
67 Express from St. John and Halifax	21.55

All trains are run by Atlantic Standard Time. **Trains**

of clock to mid-night. **Monday, N. S. April 8th, 1907**

Parlor Cars between Halifax and Sydney. Dining Car
on No. 25 train between Halifax and Mulgrave, on No. 19 train
between South River and Mulgrave. On 25 train between
Mulgrave and Halifax.