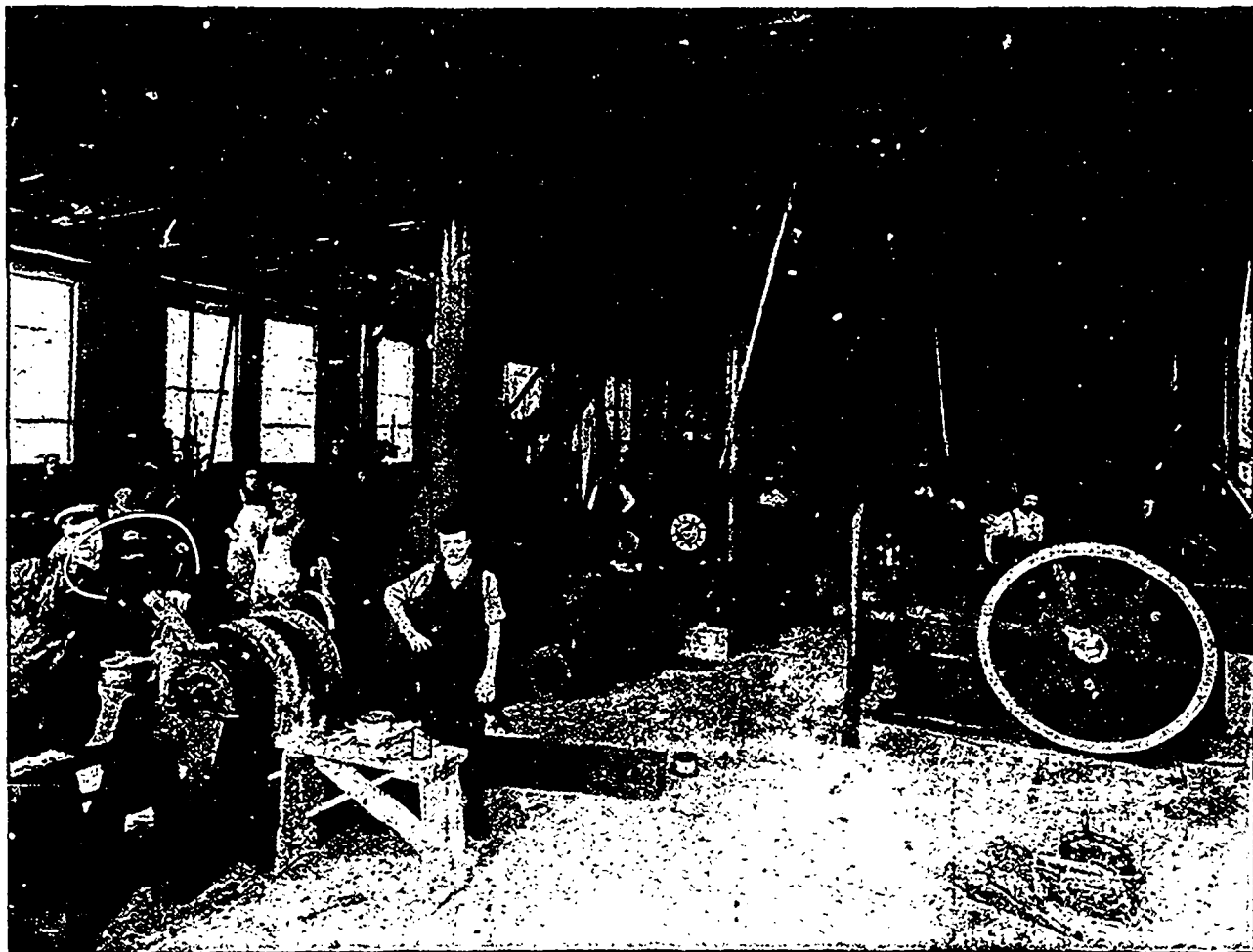


the winding room, which is also a separate department, and supplied with necessary lathes, forms, bucks and special appliances for this particular class of work. In the basement is situated the brass moulding department and steam plant, which operates a direct connected unit that supplies current for the power and lighting of the entire works.

The company is now working its factory overtime to meet the demand for its apparatus. Some of the principal orders now being turned out are: Direct connected generators for the T. Eaton Company; complete electric plant for the Verity Plow Company, Brantford, Ont., including a direct connected gen-

such statements can be taken for granted, at least one of the pests must be caught and produced. I have been engaged to try to give a reliable reason for the foul odors that seem to come, sometimes rather suddenly in the evenings at one of the hotels, and after about 30 minutes time (often less), it completely passes away. It seems only to come after sunset and seldom after the hours of midnight. This almost proves that the cause of the odor either moves in the atmosphere like a bird or the odor is in such large quantities that it moves through the atmosphere in a column, leaving the odor in any place or in any room that it may come in contact with during its passage.



TORONTO ELECTRIC MOTOR CO.'S MACHINE SHOP.

erator, two incandescent dynamos for the Parkhill Electric Light Company, two 60-light arc dynamos and 80 arc lamps for the Brantford Electric & Operating Company; electric power and lighting plant for the Rat Portage Lumber Company; two 40-h.p. motors for The Mail and Empire Company, 100 arc lamps for the Lachine Rapids Hydraulic & Land Company, Montreal, and numerous smaller orders. Owing to the pressure of business this company will not exhibit at the Toronto Industrial Exhibition this year. Any visitor that will favor the company with a call at the new works, 39 to 45 Pearl street, will be warmly welcomed.

AN UNSANITARY DISCOVERY.

BY W. M. WATSON.

Tourists spending their holidays in Muskoka and other Ontario summer resorts have been considerably exercised on account of offensive odors that have, during the present excursion season, pervaded those districts. We have it on unquestionable authority that large gatherings have abruptly dispersed on account of a sudden passage through the air of a disgusting odor, and which has been stated to be caused by a pest named a stink bug. In the early days of my residence in Canada I was a thorough unbeliever in the power of the animal called a skunk to create a nuisance, but in time proofs came to hand and I was convinced. But not so with the theory put forth to explain the odors that have occasionally contaminated the air, and entered the interior of several of the hotel rooms; before

From the information I have gathered I find that there are hotels in that district whose sanitary conditions could be improved, and others that have secured the city advantages of a plentiful supply of good water and almost every modern sanitary appliance necessary for the cleanliness and comfort of their patrons, erected with great care, and high class workmanship. It is one of the last named kind that I was called upon to inspect and try to locate the cause of the occasional unpleasant odors. I was the third party that had been called in for the purpose. Each of the previous firms had thoroughly examined and tested the plumbing appliances and drains, and I believe found them smoke-proof and perfect. This hotel had a private sewage disposal works, that seemed to get all the blame, from the managers and attendants. The settling tank was 100 yards from the house, and well covered up, with an airtight wooden cover, and sand. It had a breather pipe about one foot high and a 4 inch air discharging pipe, 20 feet high, and on account of a suspicion that the foul gases from the tank were discharged into the air through the two pipes, and traveled into the rooms of the house, they had been plugged tight up, but the smell still continued to come as usual. Then the irrigation gravel sewage filter was over another 100 yards away, situated behind a bend and cliff of land, which had also two tall air vent pipes, which would discharge foul air that might travel to the hotel, but it appeared to me rather improbable.

The boarding accommodation for tourists is erected on low grounds near the sheets of water, and this one had high hills on