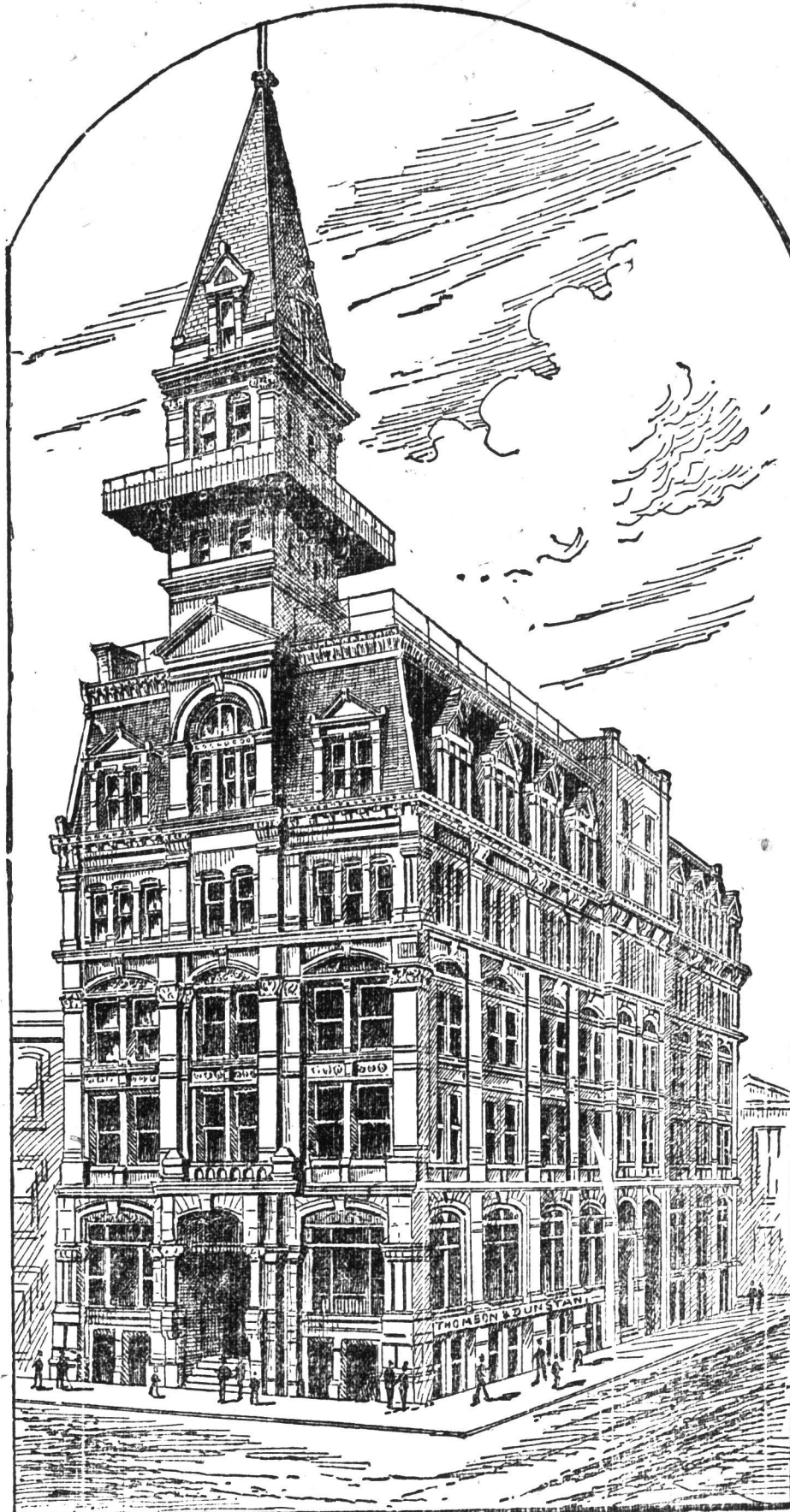
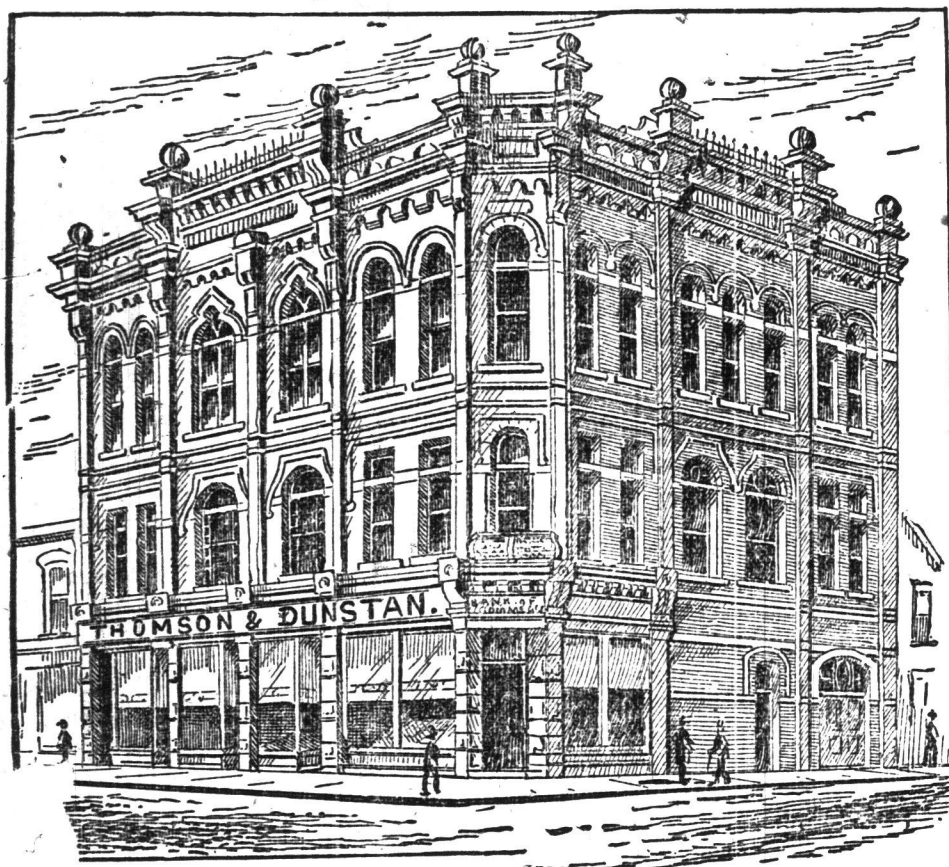
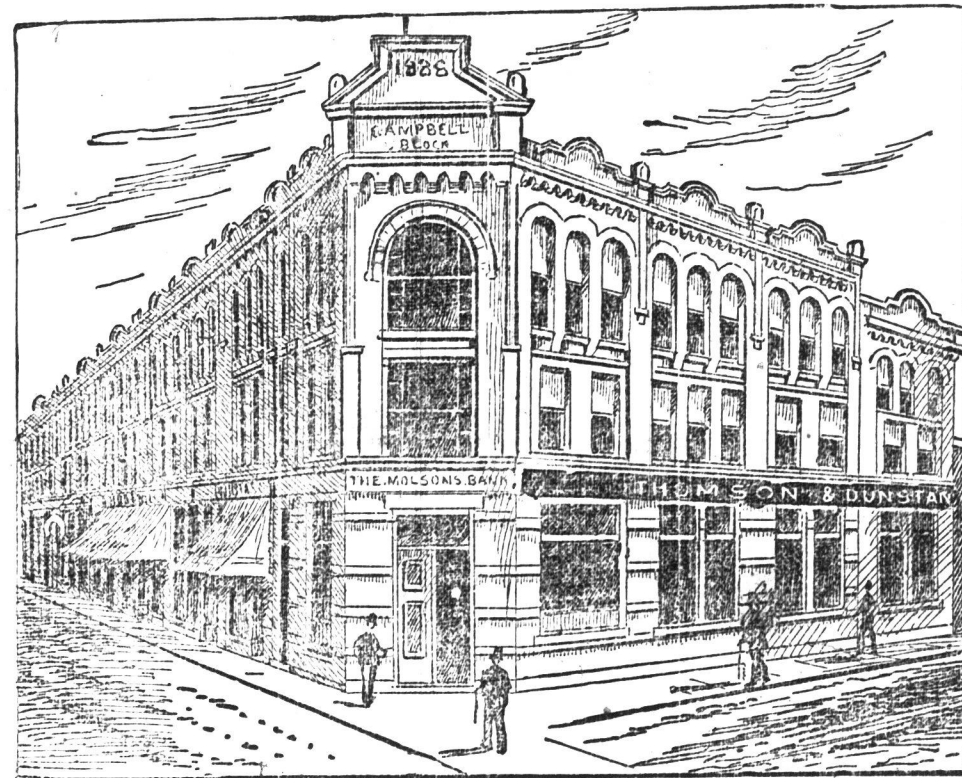


Established



Head Office--Mail Building.

1883



LIST

- ALBERTA-AVENUE--89.
- ALEXANDER-AVENUE, 100 feet--\$19.
- ALEXANDER-AVENUE--\$10.
- ANNETTE-STREET, 240 feet--\$25.
- ANNETTE-STREET, 70 feet--central--\$26.
- ANNETTE-STREET, store and dwelling--\$2500.
- ANNETTE-STREET--corner--\$24.
- ARDAGH-STREET--\$15.
- BLOOR-STREET--\$25.
- BLOOR-ST--\$15.
- CLENDENAN-AVE--\$18.
- CLENDENAN-AVE., 150 feet--\$20
- CLENDENAN-AVE. -- a beautiful lot--170 x 300.
- DURIE-ST--\$10.
- DURIE-ST--\$12.
- DUNDAS-ST., 50 feet--\$60.
- DUNDAS ST., 50 feet--\$105.
- DUNDAS-ST., 120 feet--\$110.
- DUNDAS-ST., 120 feet--\$135.
- DUNDAS-ST., 50 feet--\$150.
- ELIZABETH-ST--\$18.
- ELIZABETH-ST--\$19.
- ELIZABETH-ST--\$20.
- FLORENCE-AVE--\$8.
- FAIRVIEW AVE--\$18.
- FAIRVIEW AVE--\$19.
- GILMOUR AVE--17.
- GILMOUR AVE--\$18.
- HENRY ST--\$10.
- JANE ST--\$12.
- JOY ST--\$16.
- KEELE ST--\$15.
- LOUISA ST--\$15.
- LOUISA ST--\$20.
- LOUISA ST., corner, 50 feet--\$30.
- LINCOLN AVE--\$16.
- LAKEVIEW AVE--\$23.
- MARIA ST., 250 feet--\$15.
- MURRAY ST--\$10.
- MURRAY ST--\$12.
- PEELE ST--\$10.
- PEELE ST--\$12.
- QUEBEC AVE--\$18.
- ROWLAND ST--\$16.
- ST. CLAIR AVE., 390 feet--\$11.50.
- ST. CLAIR AVE., 100 feet--\$23.
- ST. CLAIR AVE., 50 feet--\$22.
- ST. CLAIR AVE., 200 feet--\$28.
- THOMAS ST--\$16.
- UNION ST., 120 feet--\$40.
- VINE ST., 100 feet--\$40.
- WILSON PLACE, 50 feet--\$30.
- WILSON PLACE, pair houses--\$4800.
- WOODBURN AVE--\$18.

J. F. THOMSON.

LIST

- \$9000--ADELAIDE ST., 56 x 100, good corner.
- \$3000--ADELAIDE ST., 20 x 100 feet.
- \$60 PER FOOT--Admiral road, 100 feet.
- \$25 PER FOOT--Campbell ave., 400 feet.
- \$40 PER FOOT--Cottingham street, 220 feet.
- \$25 PER FOOT--Dufferin street, 1 lot.
- \$32 PER FOOT--Delaware st., 75 feet.
- \$90 PER FOOT--Huron street, corner Lowther, 114 feet.
- \$20 PER FOOT--Hamburg st., 135 feet.
- \$200 PER FOOT--King street vacant; 200 feet.
- \$30,000--King street--fine block; 51 feet, corner.
- \$35 PER FOOT--Macpherson avenue, 100 feet.
- \$40 PER FOOT--Macpherson avenue, 200 feet.
- \$45 PER FOOT--Macpherson avenue, 200 feet.
- \$75 PER FOOT--Madison ave., 100 feet.
- \$15,000--OLIVE ST., near Don depot, well rented.
- \$20 PER FOOT--Oak street, corner St. Clair, 30 feet.
- \$60,000--QUEEN ST., corner of York street paying 4 per cent. net.
- \$400 PER FOOT--Queen st., near Victoria, 44 feet.
- \$16 PER FOOT--Radford street, 150 feet.
- \$45 PER FOOT--Roxborough st., 166 feet.
- \$48 PER FOOT--Roxborough st., 200 feet.
- \$50 PER FOOT--Roxborough st., 200 feet.
- \$53 PER FOOT--Roxborough street, 200 feet.
- \$56 PER FOOT--Roxborough street, 150 feet.
- \$60 PER FOOT--Roxborough street, 100 feet.
- \$40 PER FOOT--St. Clair ave., 50 feet.
- \$40 PER FOOT--St. Clair ave., 52 feet.
- \$35 PER FOOT--St. Clair ave., 132 feet.
- \$20,000--SIMCOE ST., with house, 148 feet.
- \$400 PER FOOT--Yonge street, corner Isabella, 52 feet.
- \$11,500--YONGE ST., corner Price.
- \$7000--Yonge street, above Price street.
- \$300 PER FOOT--Yonge street, corner Davenport road.
- \$150 PER FOOT--Yonge street, 252 feet.
- WE HAVE FINE Bay-street Warehouse that pays 5 per cent. net.
- OFFICE BUILDING on Victoria street paying 4 per cent. net.
- BLOCK QUEEN ST. Stores east of York street paying 4 per cent. net.
- BLOCK STORES, QUEEN-ST., near Bathurst, north side, paying 3 per cent. net. Best built stores in the city.

SOME MOST DESIRABLE acre blocks for sub-division, on easy terms.

ALLO SOME CENTRAL store properties, paying a very good interest. The land is rapidly increasing in value.

A chance of a lifetime. For full particulars apply to

LIST

- \$2500 PER ACRE--10 acres of sub-division; in direct line of proposed Gerrard-street extension, near Coxwell-avenue. Don't miss it.
- 47 ACRES at junction of C.P.R. Don branch and Ontario & Quebec R.R. The suburban depot of "Gudimora" is contracted for on this property. This property will give the purchaser a fortune. For particulars and maps apply to Thomson & Dunstan.
- 47 ACRES, running north from Queen-street to Danforth-avenue, known as the Platt estate. We can sell this at an average price of \$15.50 per foot and the Queen-street front is today worth \$50. Gerrard-street extension will run through this plot, giving it two important thoroughfares. Thomson & Dunstan.
- 10 ACRES for sub-division on Broadview-avenue, containing some of the most picturesque residential sites in Toronto. Call for full particulars.
- THE FUTURE business block, containing 1175 feet on Gerrard-street, Pape and Carlaw-avenues. Street car terminus, C.P.R. depot and central. Call for particulars.
- \$22 PER FOOT, about 500 feet high, level land, with commanding view of Lake Ontario and the city; nothing so cheap in the vicinity.
- \$800 PER ACRE--Salmon-ave., 10 acres; a sure investment.
- WE HAVE a few choice water frontages still for sale on Ashbridge's Bay, after a heavy run. First come, first served. In this grand field for speculation.
- WE OFFER in this list the most valuable business site east of the market, the northwest corner of Broadview-avenue and Queen-street--\$240 per foot. It will never be bought at this price again.
- BROADVIEW-AVE., cor. Sparkhill-avenue. Here is the chance to double your money, the speculators corner, Broadway \$50 (corner), and Sparkhill \$25; nothing better.
- BRIGHTON AVE., two brick-fronted houses--\$3000.
- BROOKLYN-AVE--\$23.
- BIRTLE AVE--\$16.
- BROOKE AVE., cheap--\$22.
- BOLTON AVE., corner Cummings street, 100 x 100 feet, and lot 1500. carries itself, a chance--\$22.
- CYPRESS AVE., near Broadview--\$22.
- CYPRESS AVE., corner Broadview-avenue, a beautiful spot for a residence--\$70.
- DANFORTH AVE., corner Ross--a bargain--\$16.
- DANFORTH AVE., near Logan-avenue, cheap--\$25.
- EASTERN AVE., corner Booth, a good location--\$35.
- EASTERN AVE., near Booth, a good investment--\$32.
- GERRARD ST., near Jones, very desirable--\$23.
- GERRARD ST., corner Broadview, a grand store site--\$30.
- GUELPH AVE., for residence--\$20.
- HAMPTON AVE., near street cars--\$25.
- HERBERT AVE., close to Woodbine, cheap--\$13.
- LOGAN AVE.--Look, near Gerrard--\$23.
- LANGLEY AVE., best residential street--\$35.
- LESLIE ST., corner Doel. Don't miss it--\$25.
- MORSE ST., two houses cheap--\$2800.
- PAPE AVE--\$15.
- PAPE AVE--\$28.
- QUEEN ST., near Pape, a chance \$30.
- QUEEN ST., corner Leslie, a bargain--\$60.
- SMITH ST., corner Logan--\$30.
- SMITH ST., very cheap--\$27.50.
- SPARKHALL AVE., cheapest property east--\$25.
- VICTOR AVE., corner Howland, rare--\$30.
- VICTOR AVE., near Broadview--the opportunity--\$30.
- WITHEROW AVE., corner Broadview; good--\$70.
- WITHEROW AVE., corner Logan, a capital investment--\$28.
- WITHEROW AVE., near Pape--\$24.
- WILSON ST., beautifully situated and low price--\$22.
- WHITNEY AVE., county taxes--\$16.
- WILSON ST., good value--\$30.
- BEE ST--\$9.
- CRONYN AVE--\$8.
- GAMBLE AVE--\$10.
- LESLIE ST--\$8.
- TORRENS AVE--\$7.

GEO. DUNSTAN.

THOMSON & DUNSTAN

Real Estate Brokers, Valuators, Renting and Loans

WEST BRANCH: West Toronto Junction,
CAMPBELL BLOCK,
ARTHUR MEREDITH, Manager.

HEAD OFFICE:
MAIL BUILDING,
TELEPHONE 1327.

EAST BRANCH: 796 Queen-street East.
TELEPHONE 2096.
EVELYN MACRAE, Manager.