

WARM WELCOME

Is Accorded to President Wilson.

When He Arrived on a Naval Yacht at Rhinecliff.

Rhinecliff, N.Y., Nov. 10.—The naval yacht Mayflower with President Wilson and Mrs. Wilson on board, on their way to Williamstown, Mass., to attend the christening of Mr. Wilson's grandchild, arrived off Rhinecliff early to-day after an uneventful trip up the Hudson River.

The Mayflower anchored off Rhinecliff before daylight, but the President did not come ashore until 9.50 o'clock, to take his train for Williamstown.

Throns lined the river bank, many carrying American flags and when the Mayflower's launch, carrying the President and Mrs. Wilson, was seen to put off from the yacht the crowd rushed excitedly toward the landing to greet them, amid enthusiastic cheers.

The President's face was wreathed in smiles. He looked completely happy. He had received by wireless the word that he had been re-elected. He raised his hat and waved it to the crowd as he and Mrs. Wilson set out on foot for the railroad station nearby.

"NOT YET" SAYS CHAS. E. HUGHES

Republicans Have Not Yet Given Up Hope of Victory.

UNOFFICIAL RESULTS

Have Been Base of Democrats' Calculations So Far.

By Courier Special Wire
New York, Nov. 10.—Lawrence Green, secretary to Charles E. Hughes said to-day in response to questions by newspapermen that Mr. Hughes would not to-day send congratulations to President Wilson. "Not yet," said Mr. Green.

Mr. Hughes himself declined to make any comment upon the election results. He rose about 8 o'clock, and after reading the newspapers went for an automobile ride. He was, apparently, in cheerful spirits.

It was expected at his hotel that he would receive a visit during the day from Republican National Chairman Wilcox, and one or two other party leaders, probably after the conference at Republican headquarters, set for the noon hour, on the question of a recount of the vote in close states. This matter, it is understood, Mr. Hughes was leaving entirely in the hands of his campaign managers, although before definite action they would consult him to learn his views.

New York, Nov. 10.—Chairman Wilcox refusing to concede the election of President Wilson, said to-night in a formal statement, issued after the conference with other Republican campaign managers, that the result still depends upon the vote of a few close states and that the returns thus far announced in most states are unofficial and may be changed by the official count.

WINDSOR STREET STATION
It has been said by officials of other roads that the Windsor street station is the best kept of any they have seen, and this is due to the efforts of Mr. Bell, who is the general superintendent of the building. Certainly, the station proper, the yards, the platform, the tracks, the concourse, the waiting rooms—all bear testimony to the scrupulous care with which they are treated. There is not a scrap of paper to be seen anywhere. The motor trucks have their entrances and exits; but they never trouble the passengers.

The concourse has latterly been entirely re-painted with a color which gives the light all the necessary encouragement. The whole administration of the station and offices is like clock work for precision and order and neatness. The higher officials are much interested in seeing that all is in apple pie order in a station which speaks the work or advance and provides for the future.

Social and Personal
The Courier is always pleased to use items of personal interest. Phone 276.

Mrs. Herb. Wright, of Brownville, Maine, accompanied by her son Henry, is spending a couple of weeks with her sister, Mrs. J. A. Powell, 187 Marlboro St.

Pte. Frank Mathers of the Lincoln Home Guard Battalion, is visiting at the parental home, in this city while on a short furlough.

EXCEPTIONAL OFFER!
Get 3 cakes Palm Olive Soap, value 45c absolutely FREE at Brander's Drug Store.

E.B. Crompton & Co. | The Candy Dept. is Well Worth a Visit | E.B. Crompton & Co. LIMITED

FLOWERS

So Natural Looking That They Would Fool a Bee

June Roses, in assorted colors5c each
stem, in red, pink, yellow and white5c each
June Roses, in assorted colors5c each
Linen Roses and Wax Leaves, in assorted colors15c each
Rubber Fibre Rose Buds, with wax leaves. Pink only25c each
Large Yellow, shaded to a pretty tan. Extra long stem, very natural, at 10c each\$1.00 doz.
Iris (or Flags), mauve only5c each
Golden Rod—long stems75c
Nasturtiums, 3 flowers and 2 birds, green with each spray; flowers made of linen35c each

Overseas Package for the Soldier

Package Containing Chocolate Bars of Quality Put Up in Tin Box, Then in White Box Bearing Label for Address

47c

CANDY DEPT.



Look at These SPECIALS

—FOR— SATURDAY

They Are Worth Studying

50 dozen white and colored Bath Towels, good size and quality, very absorbent, 25c pr
30 doz. Huck Towels, endire strong, 25c pair, 35c pair, 45c pair and50c pair
100 yards good strong Sheetting, 2 yards wide 25c yd
100 yds. good strong sheetting, 2 1-4 yds. wide, 30c yard
25 doz. H. S. Tray Clothes, 16x24, 18x27. Excellent quality,\$1.49 each
20 pcs. Striped Flannellette, good strong quality, 34 inches for12-12c, yard
50 pcs. White and Grey Flannellette Blankets, large size,\$1.02 pr
25 only, 72 in. x 72 inch Chintz Comforters, \$2.50 each covered with fast color Turkey Chintz.
Good fast color American Prints, to clear10c yard
50 White Honey Comb, large size Bedspreads,\$1.49 each
500 yards beautiful quality Wrapperette, fast colors, assorted shades, stripe and floral designs17c yard
10 pcs. Table Oilcloth, blue, green, tan and red, 60 inches wide22c yard
Special Table of Remnants of all kinds, also odd fancy linens at reduced prices.
—Main Floor

Take a Box of CANDY

HOME WITH YOU

Quality Comes First—Prices Next—and That Always the Lowest

Fine Chocolates, 40c value Saturday Morning

Maple and Chocolate Fudge25c lb.
Chocolate Drops, No. 120c lb.
Turkish Delight20c lb.
Special Mixed Creams and Chocolates18c lb.
Velvet Marshmallow20c lb.
Peppermint Humbugs18c lb.
Peanut Crisp18c lb.
Fresh Salted Peanuts18c lb.
Pink Peanuts10c lb.
Hard Nut Taffy30c lb.
Spearmint Gum, 2 for 5c
—Main Floor
Candy Department

Gift Suggestions For the Man in Khaki

Men's Heavy Wool Khaki Gloves. Per pair\$1.00
Men's Gloves, wool lined. Per pair \$1.50. One clasp
Men's Khaki Cotton Handkerchiefs, 2 for 25c
Men's Khaki Silk Handkerchiefs, 25c, 50c and \$1 and3 for 25c

Better Quality in Women's New Cashmere Hose

Women's Black Cashmere Hose, seamless feet, double toe and heel, full fashioned. "Pen-Angle" and English make. Fast dye.75c pair

Women's Black Cashmere Hose, seamless; double toe and heel full fashioned. Sizes 8 1-2 to 10.50c

BOYS' NEW CASHMERE HOSE.

Boy's 2-1 Ribbed Cashmere Hose, seamless feet, double toe and heel, good wearing line, fast dye, at 50c, 60c, and75c pair



—Main Floor

Helpful and Saving Hints For The Busy Housewife



Half Price Sale of Useful Enamelled Kitchenware

Some of these items are manufacturer's overmakes and seconds—all are of good quality and will return good service.

Oblong White Granite Pudding Dish, in large size, Reg. 25c, to clear at12 1-2c
Grey Enamel Saucepan, with straight handle. Large size. Sale Price18c
Grey Granite Stirring Spoons; splendid value at 8c
Grey Granite Tea Pots, worth up to \$1.00. All to go at20c
Good heavy quality, large size Aluminum Preserving Kettles, worth \$2.50. Sale Price\$1.49
Aluminum Sauce Pans in any size; Sale Price 18c to 80c
Grey Granite Pie Plate and Jelly Cake Pans; large size. Sale Price10c
Four Quart size, white granite Water Jugs. To clear at below cost. Prices25c to 47c
Long Granite Roast Pans or Drip Pans. Only a few left. Sale Price20c
Individual Granite Bowls in blue, white and grey. A very useful article; all to clear at4c
Large Round Granite Pans. A very handy article. Sale Price14c

We have a splendid line of Grey Enamel Tea-kettles. Just the thing for gas stoves. Regular Price 65c. Sale Price49c
—Basement.

New and Handsome English Dinner Set

This set comes in a most artistic decoration showing a border of trailing roses, in a half line in brown and gold edges. All shapes are new. Full 97 pieces to set. \$19.50

Small Dinner Set of Wedgewood Imperial Porcelain—76 Pieces—Sale . . . \$10.18

This well known make of English Porcelain Dinner Ware is sold the world over. The quality is of the best, while the decoration of pretty little rosebuds scattered over the field with gold border make it most desirable. A Wonderful Bargain. \$10.18

Most Remarkable Savings

Finest China Dinner Ware IN BROKEN STOCK

To be Cleared at One-Third of Before-the-War Prices

Christmas goods are clamoring for more room and more room—so something must go to make way. This offering consists of the finest grades of China Dinnerware—such as Haviland's and others. But read the list of articles and values, a few of which we give below.

	Reg. Value	Sale Price
Soup Plates	35c	12 1-2c
Ramekins on Stand	75c	29c
Bouillon Cups and Saucers	75c	29c
Reception Cups and Saucers	35c	15c
Salad Bowls	75c	29c
Oatmeal Dishes	35c	12 1-2c

A New Shipment of Artistic Vases
Now shown for the first time, and placed on introductory sale for a few days. Values up to 50c.
Special 29c
—Basement

E. B. CROMPTON & CO. LIMITED

Ireland and Switzerland and France Have Sent Their Prettiest Colored

Handkerchiefs

Soft delicate colorings, which only they know how to use in handkerchiefs; and we have never had a collection so lovely.

Women's Colored Handkerchiefs, 75c. to \$1.50 each, and this takes in the fine hand-spun things.

Children's Colored Handkerchiefs, at 2 1-2c. up, and there are many characters and quaint embroideries.

—Main Floor.

Art Needlework AT ITS HEIGHT

It isn't a minute too soon to start making your Christmas Gifts, so we offer a few suggestions.

Doiley Cases made up of Dutch blue finished inside with sheets of tissue paper to roll the doileys in. Price59c

Bath Towels, edge to be scalloped or ready for crocheted edge. Good quality towellings.59c each

Work or knitting bags made of white jean. Top of bag and handle finished with shell edge. Blue or pink. Design stamped on front of bag. Special Price89c

Laundry Bags, made of natural shade linen stamped with word "Linen" or dutch scene. Price65c

Fork and Spoon Cases, made up of embroidered with flannel linings. Price85c

Pillow Slips, Hemstitched ends. Stamped with new designs, 65c pr.
Second Floor

GROCERIES

Saturday Last Day of The Pure Food Show. COME!

To-morrow's Specials

Butter, Choice Creamery, per lb.47c
Sugar, Redpath's Granulated, 20 lbs for\$1.65
Sugar, Redpath's, Granulated, 10 lbs for85c
Rolled Oats, 6 lbs. for25c
Rice, choice, 3 lbs for25c
Soap, Surprise, 6 bars with order, for25c
Pork and Beans, large can, for15c
Peas, 2 cans for25c
Corn Flakes, 2 lbs for 16c
Corn Flakes, 3 pkgs. for 25c
Shredded Wheat, 2 pkgs. for23c
Ammonia, 10c. size, 2 packages for15c
Tea, very special, fine quality, per lb.38c
Corn Starch, 10c. package, 2 for23c
Swift's Smoked Ham, special per lb.28c
Swift's Back Bacon, per lb.32c
Prunes, 2 lbs. for25c

The Pure Food Store

Come to the Pure Food Show
We are in the Overseas Business

SEE WINDOW DISPLAYS

Fashion Favors Flat Hand Bags and Envelope Books

That is when the material used is leather. In fabrics it is different.

Of Flat Leather Handbags and Back Strap Books we have a splendid showing, with especially good assortment at low prices.

Fine Examples in Seal, Vachette and Morocco at \$1.50 to \$10.00
—Main Floor.

Women's TOPCOAT Styles Are Delightful This Season

Loose, Flaring Tweed Coats, with Deep Collars

Smart Swagger Style of all wool Scotch Tweed Coats, featuring the ripple raglan. 7-8 length, with the new mink collar of seal plush. Sale Price \$15.00
Sizes 16, 18 to 42.

Broadcloth Coats, Black or Navy, for elderly ladies, straight loose or semi-styles, with rich convertible collars of self or plush. Prettily trimmed with large buttons or pipings to match collars, set in sleeves, half set in lined. Sale Price \$19.50 and \$22.00

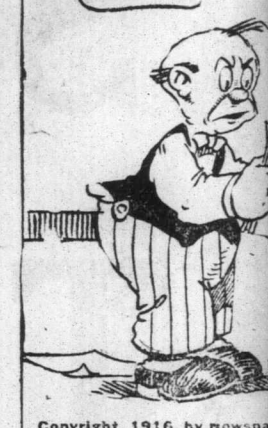
Novelty Tweed Coats, very full ripple styles, half Raglan sleeves. Finished with extra large self capelet. Collar, large bone buttons. Sale Price \$23.50, \$25 to \$28.50

Black Ocean Wave Plush Coats, loose belted or Raglan styles, convertible collars, 3-4 or full length. Sale Price \$16.50, \$18.50, \$22.00. Sizes, 16, 18 to 44.



What's a Fing

BY JINKS THEY AIN' USE O' TALKIN' THE HERE HOUSE-HOLD HAS GOT 'T BE CL DOWN!



Copyright, 1916, by news

Past Baseball Saw Tw

Feature and Freak Plays During 1916-17.

Two major and world records created during the 1916 season by the Yankees when they defeated the St. Louis Cardinals, 4-3, in a triple play against St. Louis, resulted from a grounder, for as triple plays are, they mostly on the drives. Pitcher Nabholz Philadelphia established the record by losing his last twenty pitches. The schedule saved from further losses.

Boston won the world's championship in five games.

Tris Speaker is the champion man with .385.

Eddie Foster and Derrill played in the most games, 158 each.

Bert Shotton went to bat times than any other player, carried his bat to the plate 613 times.

Ty Cobb scored the most runs. Tris Speaker batted out the hits, 210.

Ty Cobb leads the base-runners a gallon with 68 steals.

Walter Pipp hit the most runs, 12.

Joe Jackson leads in three hits, 20.

Eddie Graney smashed out most two-base hits, 42.

Tris Speaker is the leading base hitter with 161.

Joe Jackson has the biggest bases on hits, 283.

Tris Speaker leads in consecutive hitting, as he got 31 hits in 76 for 408, in 21 consecutive games.

Ty Cobb leads at getting 4 hits in a game, as he did this stunt times.

Ty Cobb with 4 hits for 40 leads in total bases on hits in a game, as he did this stunt times.

Buck Weaver is the leading sacrifice hitter, with 42.

Jacques Fournier, leads the base-men at fielding with .955.

Oscar Vitt leads the third-basemen at fielding with .950.

Donnie Bush leads the shortstops at fielding with .969.

Bob Roth leads the right-fielders with .972.

"Happy" Felsch leads the outfielders at fielding with .983.

Howard Shanks leads left-fielders at fielding with .976.

Ray Schalk is the leading catcher with .986.

Harry Covalleskie leads the



NEW

Men's Head All Wool Tiger B all sizes, double breasted

Men's Grey and Fawn value

Sox

See the best at 25c, 35c