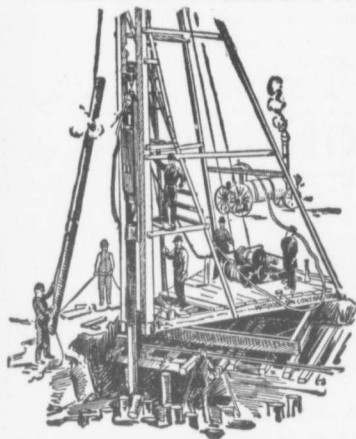


avenue, near Bloor street, cost \$6,000; John Armstrong, two storey rough-cast addition and alterations, Muir and Sheridan streets, cost \$2,000; John S. Lucas, alterations to dwelling, Alice and Downey's Lane, cost \$1,400; News Publishing Co., three-storey stone and brick printing office, Adelaide and Yonge streets, cost \$25,000; M. B. Vanderwort, two pair two-storey brick dwellings, 279 to 285 Logan avenue, cost \$6,400; T. Eaton Company, one-storey brick and iron warehouse, north side

Louisa street, near James street, cost \$30,000; M. Malone, pair rough-cast two-storey and attic buildings, 85 Sumach street, cost \$2,500; R. Lanskill, six two-storey dwellings, Gooderham avenue, near Cross street, cost \$6,500; H. E. Sheppard, four and one-half storey brick dwellings, Cottingham avenue and Poplar Plains road, cost \$6,100; H. E. Howard, two-storey brick house, 61 Waker avenue, cost \$2,800; H. Barker, two-storey dwelling, 56 Spadina road, cost \$7,000; A. F. Rogers, two-storey brick

dwelling, south side Maple avenue, near Glen road, cost \$6,000; Anthony Malone, two-storey brick dwelling, east side Huron street, near Dupont street, cost \$3,500; Charles Joffe, pair brick veneered dwellings, east side Albany avenue, near Wells street, cost \$2,000; Walter Rushbrock, pair two storey brick and stone dwellings, 305 and 307 Wallace avenue, cost \$2,000; Ellen D. Till, two and a half storey brick dwelling, Rushhome road, near Division

(Continued on page 8.)



PILE DRIVING

on land or water by Steam Pile Drivers or Drop Hammers.

**Portable Boilers
Hoisting Engines
Pumping Machinery
TO LET**

Bridge Building, Trestle Work, Wharves, Dams, Diving Submarine Work and General Contracting.

WM. HOOD & SON
10 Richmond Sq. - MONTREAL

DEBENTURES

Municipalities contemplating the issue of Debentures will find it to their advantage to communicate with

G. A. STIMSON & CO.

Investment Dealers

24 and 26 King St. W. - TORONTO

The DeLaroc-Casbon Engineering Co., Limited
506 Manning Chambers, Toronto.

CONSULTING AND DESIGNING ENGINEERS.

Consultations, Plans, Specifications and Superintendence for Bridgework, Steel Building Frames, Portland Cement Plants, Power and Miscellaneous Plants, Water Power Development, Electric Railways, etc.

Inspectors of Structural Material and of Railway Equipment.

**Pittsburgh Testing Laboratory,
LIMITED**

*Inspecting and Metallurgical
Engineers and Chemists*

SPECIALTIES: Inspection of RAILS and all material for BRIDGES, BUILDINGS, and other structures, cast iron pipe, wood and steel railroad cars.

MANUFACTURE AND ERECTION. Expert examination and reports, chemical analyses and physical tests of all kinds.

Cement Testing.

146 St. James Street, - Montreal, P.Q.

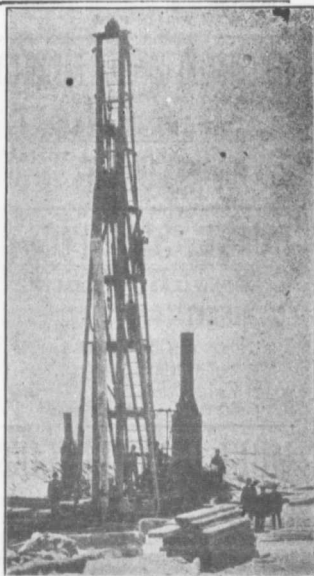
THE STEEL "CHAMPION" IS THE KING OF GRADERS

- "CHAMPION" Road Machines are now in use in every Province of Canada.



Address for 20th Century Catalogue

The Good Roads Machinery Co., Limited
(Late Killey-Beckett Engine Works)
144 YORK STREET - HAMILTON, ONT.



PILE DRIVING

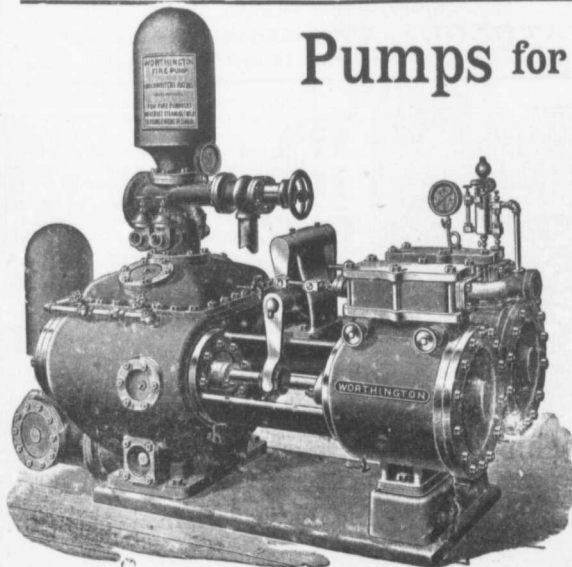
and Foundation Work.

By 5-ton Automatic Steam Pile Hammer, Water Jet or Drop Hammers, Dock Building, Submarine Work and Dredging.

BUILDING MOVER AND WRECKER

General Contracting.

JNO. E. RUSSELL, - Toronto
908 Queen St. E. - Phone M. 3007.



Pumps for Waterworks

**Waterworks Systems
Installed**

*Steam, Hydraulic, Electric,
Gasoline, Air Lift and
Automatic Rams.*

**Steam Boilers and
Filters**

Write for Prices and Particulars

The John McDougall

CALEDONIAN IRON WORKS CO., LIMITED

MONTREAL, P.Q.