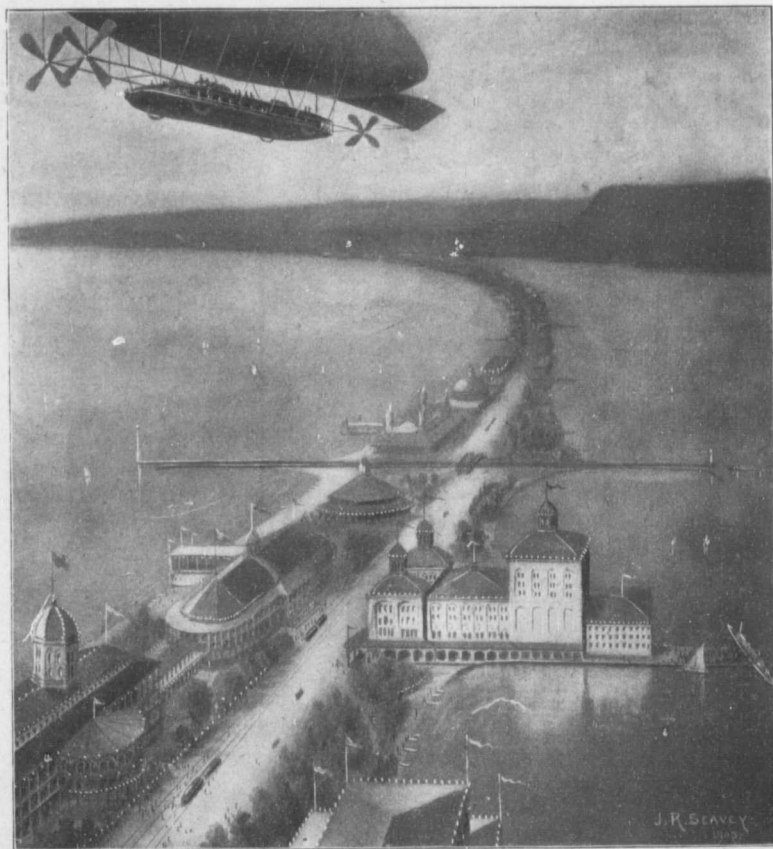


Hamilton Spectator Carnival Souvenir

Car tracks of any sort were prohibited on city streets in the year 1947, with the exception of freight lines in the factory district for shunting purposes to the freight yards outside the city limits, and in that year the city, through the commissioners, gave to all railways, electric and steam, the freedom, for a consideration of course, of the municipal right of way through the city along with joint use of the present mammoth union station quarters, which, of course, were at that time much more limited, and which will soon be again enlarged. Steam locomotives were prohibited from using the municipal right of way, motor engines

placed, taking its supply from the great Erie tunnel. The problem of mountain climbing was quickly solved by the commissioners again, they placing moving stairways at convenient points along the mountain side. These were a financial success from the day of their inception, and are to-day, as is well known, one of the corporation's best paying investments.

The mountain side was, so the commissioners decided, too beautiful a park location to be lost, and carrying out a plan inaugurated by a citizen named Beckett, more than a hundred years ago, the whole mountain side was terraced and made beautiful,



"It was made the common summer holiday resort for the masses."

running passenger trains to the union depot and to the city limits again.

Suburban electric roads reaching the city from the mountain, united in the construction of immense lifts to reach the city. The roads ran into a tunnel in the mountain on the city level, and at the end of this tunnel the cars were elevated to the table land above by the lifts.

As the city grew the mountain top became a favorite residence locality. Here an independent water pumping plant was

the drives there to-day being considered the most charming in the world. To the credit of our people be it said that within a short time a public memorial will be erected to Mr. Beckett, the father of the terrace scheme and a man who certainly lived before his time.

It seems to have been about the year 1940 that the better class citizens deserted Hamilton beach as a summer residence location and took to the north shore land of Hamilton bay. They did this immediately following the building of the electric