

Done for Canada

before the war, i. e., 1911 to

Canadian Northern enterprise, right about a reduction in rates character of the commodities carrying on the business of a ke boats at Port Arthur, the tion, and the result was the Canada, and to the people of

March 24, 1914, that as a

tions in Manitoba, Saskatche- R. in 1903 and followed by the of 1903 to 1913 both inclusive,

And this is not all. There and Fort William, not only erta, and the Canadian Pacific reductions in the rates on coal ca. There was a reduction of Saskatchewan and Alberta. It tions made by the C. N. R. ion of \$17,000,000 on grain to eastern Canada and the United incial points, would be twice, d. In over twenty years the made by the Canadian Pacific t in 1898 and 1899 (three cents C. N. R. in 1903.)

intended that it is entitled to in cereals, live-stock, mineral ommon with the other railways er railway system in the world should not be forgotten in any

eye high, anation, 180 h.p. it is used dding is rking and steam n by elec-

in the cut of the building. Our flour room occupies the top floor of the ell, and the flour is carried direct from the car to this room by an endless chain, driven by electric motors. Therefore instead of having to haul the flour as

the ovens, is carried to the lower floor by pan towers or conveyors, and are there packed in containers (such as you see in your grocery store), right off the pass, which are then carried back by the conveyor to the starting point. The breads after being packed are then conveyed to the shipping room, which occupies part of the same floor.

Our hand ovens occupy space on the second floor, which by the way is a new departure for us, we manufacturing in this department, fruit and pound cake, currant cake, cup-cake, cherry cake, cherry pie, apple pie, etc.

Our shoals are manufactured into boxes on part of the second floor, also our carcases and paper boxes, etc. We might add these are conveyed down to the lower floor by endless belts. The marshmallow and jellying department also occupy space on this floor.

The ell on this floor is used as a dining-room, also a rest room, where a hot lunch is served at the noon hour only and is furnished to the employees at the actual cost of production. In this rest room the help is supplied with the daily papers, also the latest journals and magazines.

There is one feature which I do not wish to overlook drawing your attention to, which is of all importance to me, and that is the sanitary condition of our factory. Our female help is supplied with two clean caps and two clean aprons each week, and one of the strict rules of the house is to see that the help is always kept neat and tidy.

It is only during the past few years that the White Lily Brand has become generally known, although those that have used same during these years have been our friends. To make this more explicit to you, I may state that our output has increased some ten-fold during the past ten years, and I think you will agree with me that the public in general must have been pleased with the quality of our goods.

As a suggestion, when you are again ordering biscuits from your grocer, do not forget to try some of our lines such as Soda, Fig Bars, Social Teas, Graham Wafers, White Lily Cream Bar, Arrow-root, etc., all of the White Lily Brand, and I might further state if you find the biscuits satisfactory and up to my recommendation, I would esteem it a favor if you would mention to your friends the good that you found in them.

J. A. MARVEN.

Moncton, N. B.



we formerly did, which would take two men and a team a day to unload a car, two men can now unload a car in about three hours, and the work is much easier than formerly.

OUR LOSSES.

Canadian fire losses for 1916 are estimated at fifty-nine per cent., as compared with 51.58 in 1915, and 57.58 in 1914.

Dominion Brand FERTILIZERS



**GIVE BEST RESULTS
SELL ON THEIR MERITS
SALES RAPIDLY INCREASING**

Thousands of tons of these fertilizers have gone into raising huge crops of potatoes and other produce, and are ready to do the same another season.

It is Safe to Put Your Dependence on Them.

Dominion Fertilizer Co., Limited
ST. STEPHEN, N. B.

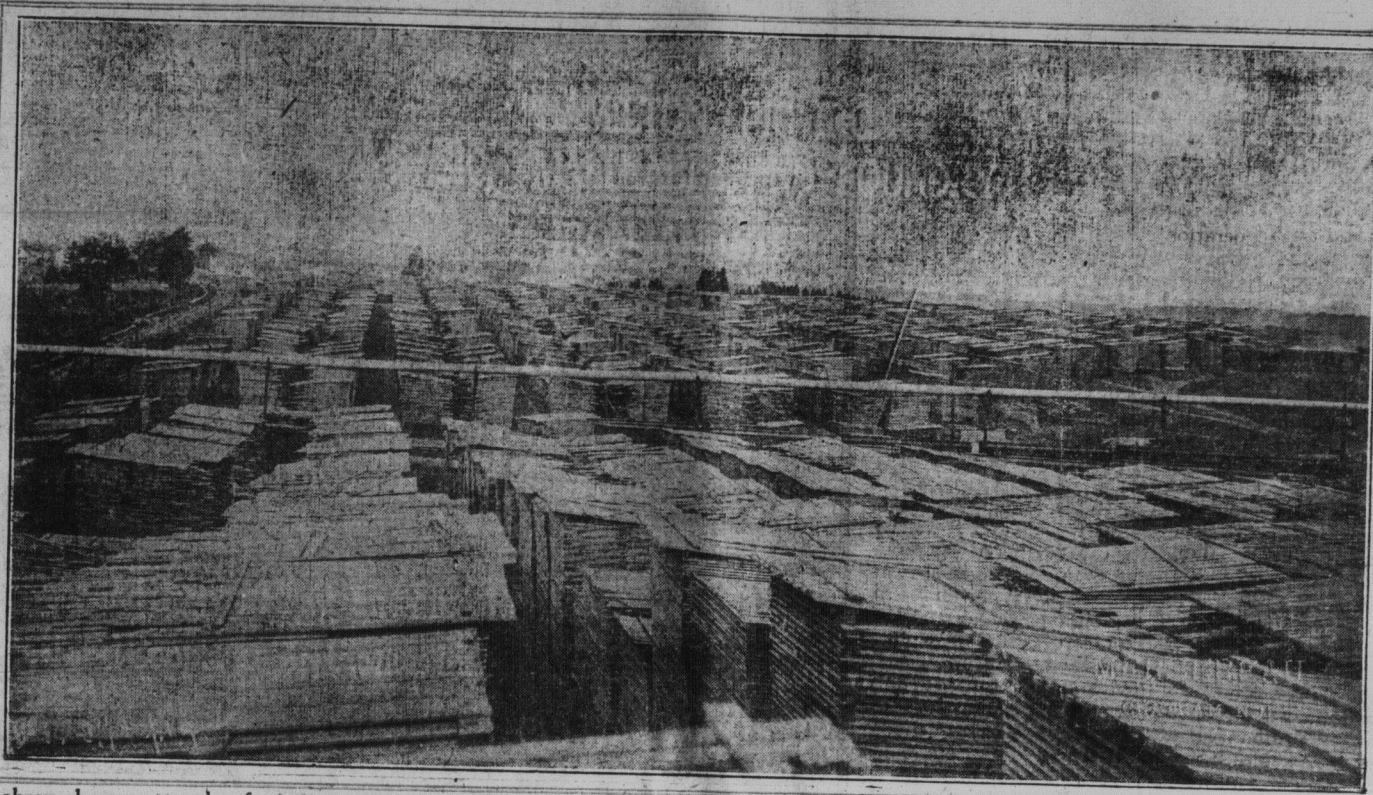
THE STANDARD ST. JOHN, N. B.

LUMBER and SHINGLES



SULPHITE and KRAFT PULP

Immense Piles of Lumber For Prompt Shipment

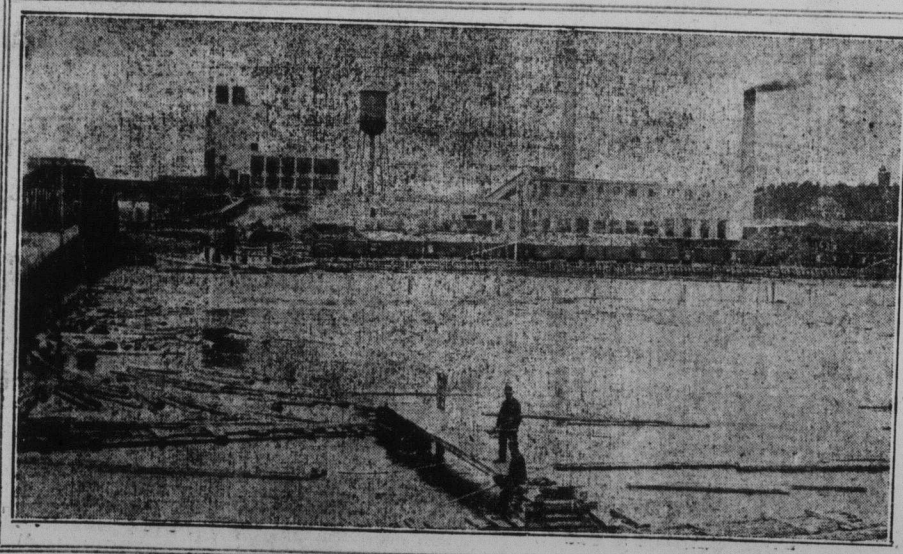


The above shows part only of our immense stock of lumber at Mill No. 1, Bathurst. Similar stocks at Mill No. 2, Bathurst, and at Bonaventure, Que.

Wood Pulp

Our Pulp Mill has a daily capacity of fifty tons each Sulphite and Kraft Pulp. The leading papermakers of the United States and Great Britain are demanding more and more of our BATHURST PULP, which is enjoying a steadily growing reputation.

A spur line from the Canadian Government Railway between Montreal and Halifax runs on to our Mill Wharf where large ocean-going steamers can be loaded and unloaded. We ship Pulp and Lumber direct into car and steamer. Samples and prices of Sulphite and Kraft Pulp gladly sent on request.



Part view of Pulp Mill—Showing Digesters and Boiler House.

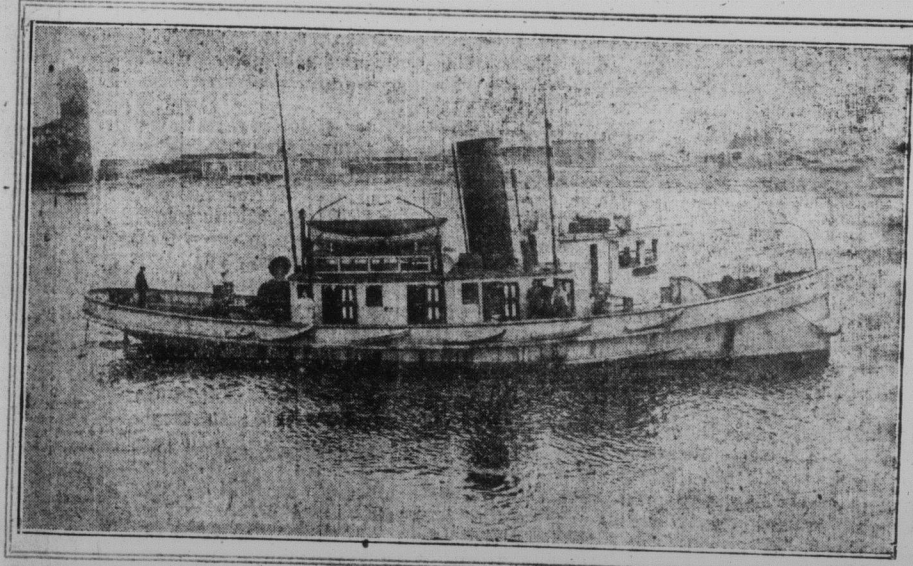
Cedar Shingles

The Cedar Shingle is rapidly coming into its own again; particularly the New Brunswick White Cedar Shingle.

Shingles cost less and last longer than any other roofing; they are wind and weather proof; repairs cost practically nothing.

No better Shingles are made than BATHURST BEAVER BRAND SHINGLES. Selected Cedar Logs, careful manufacture, correct grading and efficient and constant inspection guarantee BEAVER BRAND to be the right roofing.

BEAVER BRAND Shingles are still on the job on the roof when the other kinds have curled up and gone the way of all substitutes.



Tug "Betty D."—For towing logs from the Quebec side.

BATHURST LUMBER COMPANY
BATHURST, N. B. LIMITED

