

6569000

43000

ADVANCE PRINT

CANADA

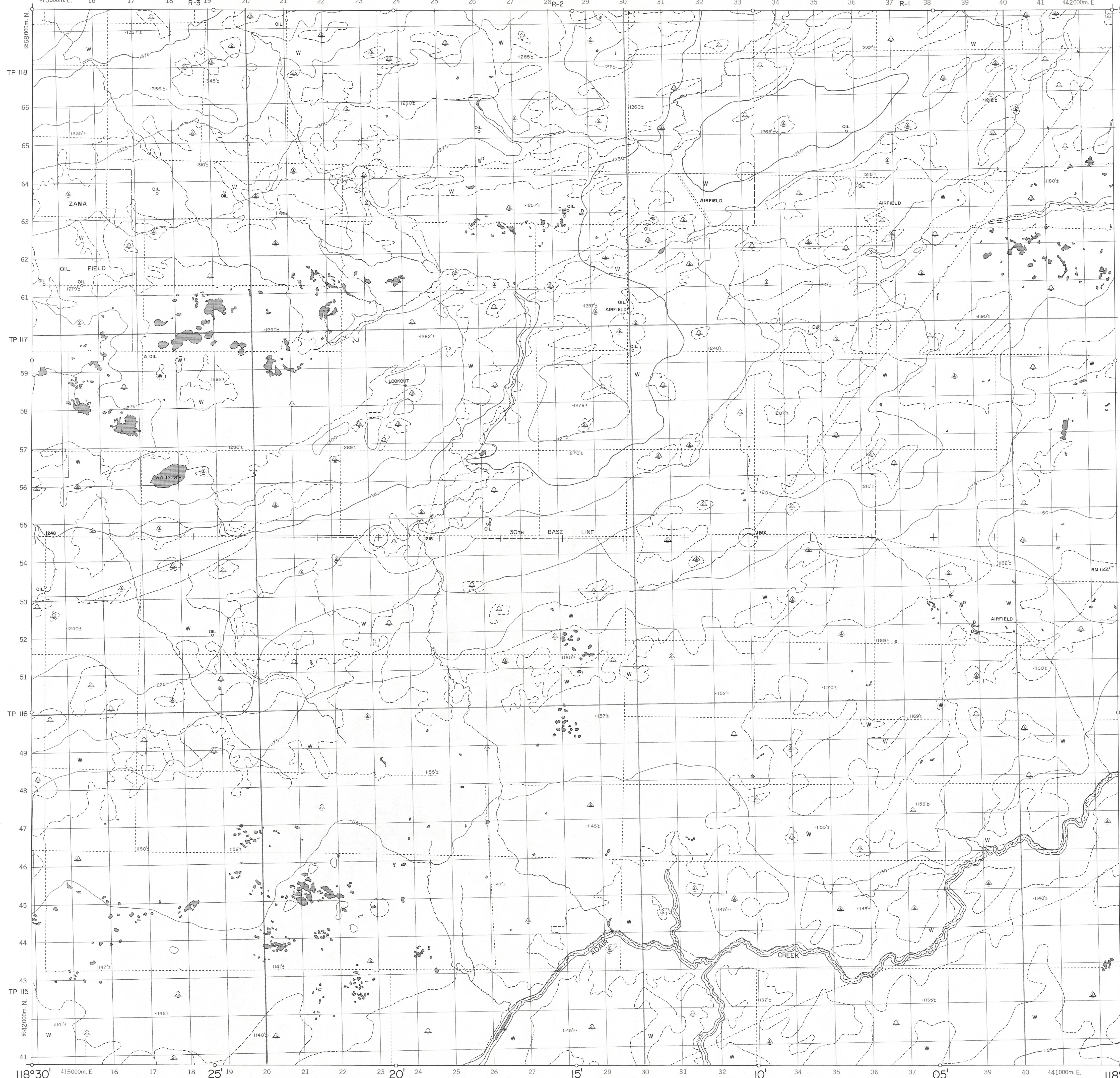
ÉPREUVE PRÉLIMINAIRE

84 M/1

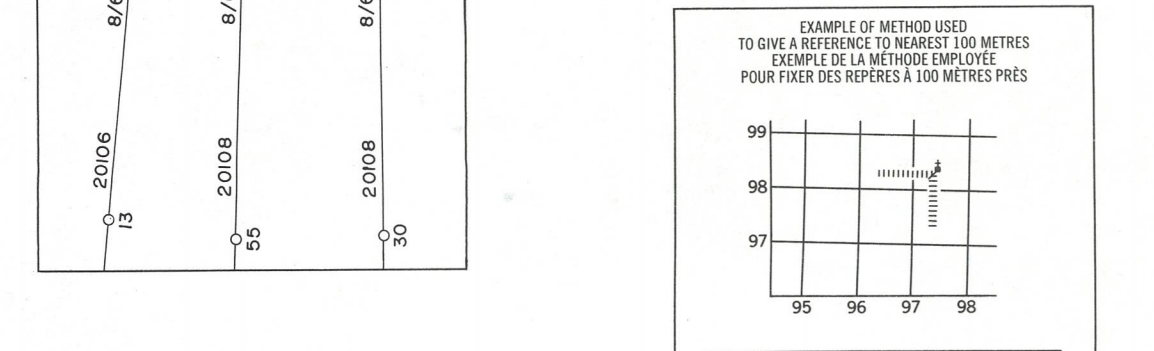
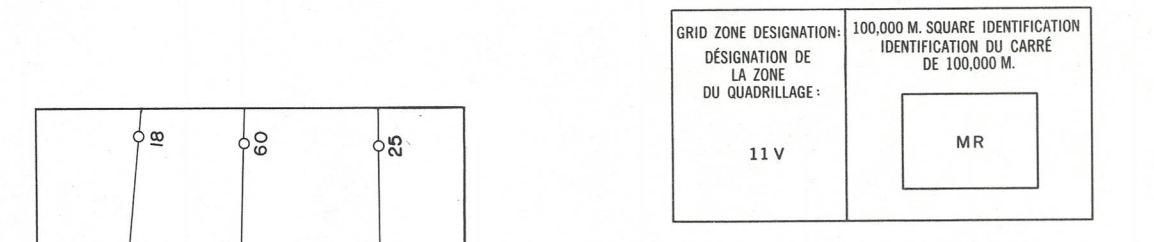
6569000

43000

59°15'

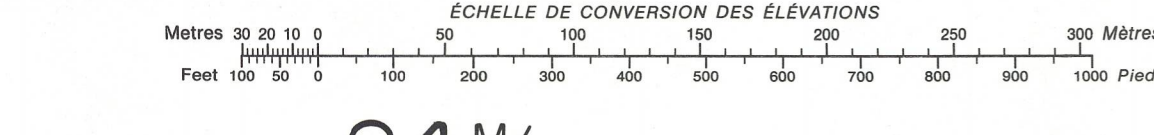


| LEGEND - LÉGENDE | |
|---------------------------------------|--|
| ROADS AND RELATED FEATURES | ROUTES ET OUVRAGES CONNEXES |
| HARD SURFACE, ALL WEATHER | SURFACE DURE, TOUTES SAISONS |
| LOOSE SURFACE | GRAVIER |
| CART TRACK, WINTER ROAD | CHEMIN DE TERRE, D'HIVER |
| TRAIL, CUTLINE, PORTAGE | SENTIER, PERCÉE, PORTAGE |
| BUILT UP AREA | AGGLOMÉRATION |
| RAILWAY, SIDING, STATION, STOP | CHEMIN DE FER, VOIE D'ÉVITEMENT, GARE, ARRÊT |
| BRIDGE | PONT |
| SEAPLANE BASE, ANCHORAGE | HYDROAÉROPORT, MOULAGE |
| LANDMARK FEATURES | POINTS DE REPÈRE |
| HOUSE, BARN | MAISON, GRANGE |
| CHURCH, SCHOOL | ÉGLISE, ÉCOLE |
| POST OFFICE | BUREAU DE POSTE |
| HISTORICAL SITE | LIEU HISTORIQUE |
| TOWERS: FIRE, RADIO | TOURS: FEU, RADIO |
| WELL, OIL, GAS | PUITS: PÉTROLE, GAZ |
| TANK: OIL, GASOLINE, WATER | RESERVOIR: PÉTROLE, ESSENCE, EAU |
| TELEPHONE LINE | LIGNE TÉLÉPHONIQUE |
| POWER TRANSMISSION LINE | LIGNE DE TRANSPORT D'ÉNERGIE |
| MINE | MINE |
| CUTTING, EMBANKMENT | TRANCHÉE, REMBLAI |
| GRAVEL PIT | FOSSÉ DE GRAVIER |
| BOUNDARIES AND CONTROL | FRONTIÈRES ET POINTS DE RÉFÉRENCES |
| INTERNATIONAL, PROVINCIAL | INTERNATIONALE, PROVINCIALE |
| BOUNDARY MONUMENT | BORNE FRONTIÈRE |
| COUNTY, DISTRICT | COMTE, DISTRICT |
| TOWNSHIP, PARISH - SURVEYED | CANTON, PAROISSE - ARPENTÉ |
| UNSURVEYED | NON ARPENTÉ |
| TOWNSHIP, DLS - SURVEYED | CANTON, DLS - ARPENTÉ |
| UNSURVEYED | NON ARPENTÉ |
| SECTION CORNERS | SECTION ANGULAIRE |
| MUNICIPALITY | MUNICIPALITÉ |
| INDIAN RESERVE, PARK, ETC. | RÉSERVE INDIENNE, PARC, ETC. |
| HORIZONTAL CONTROL POINT | REPÈRE PLANIMÉTRIQUE |
| BENCH MARK | REPÈRE DE NIVELLEMENT |
| SPOT ELEVATION, ELEVATION APPROXIMATE | POINT COTÉ, ÉLEVATION APPROXIMATIVE |
| DRAINAGE AND RELATED FEATURES | DRAINAGE ET OUVRAGES CONNEXES |
| STREAM, SHORELINE: INDEFINITE | COURS D'EAU, RIVE, IMPRÉCISE |
| DIRECTION OF FLOW | DIRECTION DU COURANT |
| LAKE, INTERMITTENT | LAC, INTERMITTENT |
| INUNDATED, FLOODED LAND | TERRAIN INONDÉ |
| MARSH OR SWAMP (WOODED) | MARAIS OU MARECAGE (BOISÉ) |
| DRY RIVER BED WITH CHANNELS | LIT DE COURS D'EAU TARI AVEC CHENAUX |
| SAND, ABOVE, IN WATER | SABLE, AU DESSUS, DANS L'EAU |
| STRING BOG | MARECAGES EN ENFILADE |
| TUNDRA PONDS, POLYGONS | TOUNDRA: ÉTANGS, SOLS POLYGAUX |
| RAPIDS | RAPIDES |
| FORESHORE FLATS | ESTRANS |
| ROCK | ROCHE |
| DAM | BARRAGE |
| WHARF | QUAI |
| DITCH | FOSSÉ |
| RELIEF FEATURES | RELIEF |
| CONTOURS | COURBE DE NIVEAU |
| APPROXIMATE CONTOUR | COURBE DE NIVEAU APPROXIMATIVE |
| DEPRESSION | COURBE DE CUVETTE |
| ESKER | ESKER |
| PINGO | PINGO |
| SAND, SAND DUNES | SABLE, DUNES |
| PALSA BOG | PALSE |
| WOODED AREA | RÉGION BOISÉE |



| | | |
|---------|---------|---------|
| 84 M/7 | 84 M/8 | 84 N/5 |
| 84 M/2 | 84 M/1 | 84 N/4 |
| 84 L/15 | 84 L/16 | 84 K/13 |

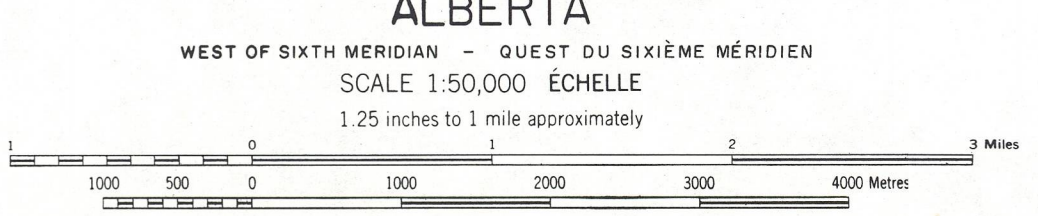
THE 1973 MAGNETIC BEARINGS (to 30°34'54.3" east) OF GRID NORTH.
 EST DU QUADRILLAGE EST DU QUADRILLAGE.
 GRID NORTH 1°04' (19 milles) WEST OF TRUE NORTH.
 NORD DU QUADRILLAGE 1°04' (19 milles) À L'OUEST DU NORD VRAI (19 milles) AU NORD VRAI.



6540000

43000

PRODUCED BY SURVEYS AND MAPPING BRANCH,
 DEPARTMENT OF ENERGY, MINES AND RESOURCES,
 OTTAWA, 1972, FROM PHOTOGRAPHS TAKEN IN 1967
 CONTOUR INTERVAL ----- 25 FEET



ADAIR CREEK
 ALBERTA
 WEST OF SIXTH MERIDIAN - OUEST DU SIXIÈME MÉRIDIEN
 SCALE 1:50,000 ÉCHELLE 1:50,000
 1.25 inches to 1 mile approximately

ÉTABLI PAR LA DIRECTION DES LEVÉS ET DE LA
 CARTOGRAPHIE, MINISTÈRE DE L'ÉNERGIE, DES
 MINES ET DES RESSOURCES, OTTAWA, EN 1972,
 D'APRÈS DES PHOTOGRAPHIES PRISES EN 1967
 ÉQUIDISTANCE DES COURBES ----- 25 PIEDS

84 M/1

EDITION 1

SUPERSEDED EDITION