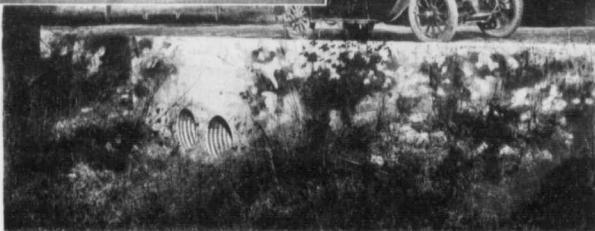
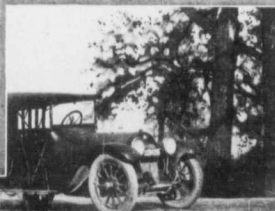


Twelve years ago these **ARMCO IRON Culverts** were installed on what is now a part of the Dixie Highway.

A dozen years of service, and two disastrous floods have failed to make any impression on them. The upper picture shows the roadway washed away, the culverts unaffected.

For the permanent road, **ARMCO IRON Culverts** are the ideal installation.

The ARMCO trade mark is a guarantee of quality—their record of service your assurance of permanence.



Made in Guelph by
Canada Ingot Iron Company, Ltd.