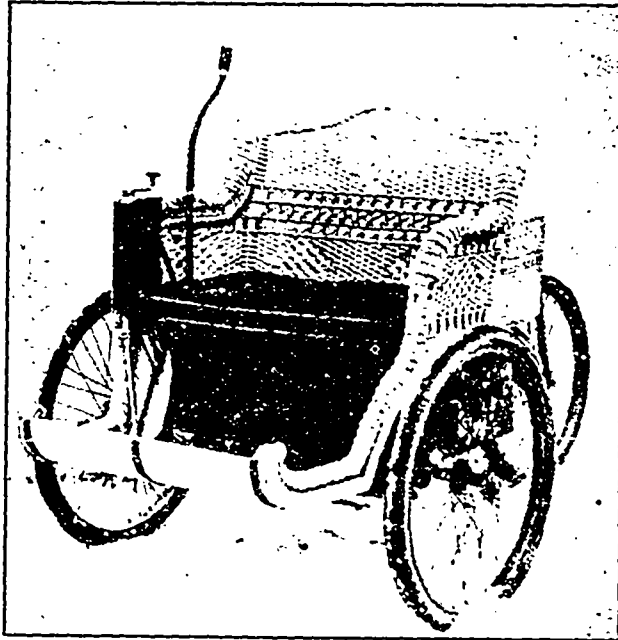


STILL'S ELECTRIC MOTET.

The accompanying illustration is of Still's Electric Motet, manufactured by the Canadian Motor Syndicate, Toronto. The machine is the design of Mr. W. J. Still, an electrical expert long and favorably known in Toronto and who is the mechanical and electrical engineer of the syndicate.



Canadian Electric Motet.

As will be seen by reference to the illustration, the motor is suspended above the front axle, the power being applied to the front wheels. The steering is done by means of a steering rod attached to the third or hind wheel. This rod is jointed and can be turned up and out of the way of persons entering or leaving the carriage, as shown in the illustration. When the driver is seated

the steering rod is turned down and is operated with the left hand, leaving the right hand for the management of the electrical device. In operating this device there is a key, the position of which indicates the direction in which the power will act, either forward or backward, or if shut off. This key is similar in size to an ordinary door key and may be carried in the pocket; and


without the insertion of it in its proper place the motor cannot be started. The small handle shown is to regulate the speed.

The company publish the following brief description of this motet:

Total weight, 400 lbs.; battery weight, 180 lbs. (Still Patent Battery); capacity, two persons and 50 lbs. of baggage, or, fitted for light delivery, 250 lbs. and driver; speed, 12 to 15 miles per hour; range (without recharging), 30 miles; steers by hind wheel, guided by left hand, steering handle lifted, as shown in photo, when occupant leaves seat; controller (in right hand) has four positions, reverse and brake; current used, 15 amperes on ordinary roads; power from special motor, designed by

W. J. Still, giving 3 1/2 h.p. for 70 lbs. weight; extreme length of wheel base, 4 feet; extreme width of wheel base, 4 feet; cost of running, 1c. per mile; turns in smaller space than a bicycle.

Further information regarding this unique and most convenient carriage can be had by application to the Canadian Motor Syndicate, 79 Adelaide street east, Toronto.



Mills, Factories, Warehouses

Are best protected against fire by being equipped with

Eddy's Indurated Fibreware FIRE PAILS


We are the only manufacturers in Canada of this celebrated ware.

The E. B. EDDY CO., Limited.
Hull, Montreal, Toronto

THE PETERBOROUGH CANOE CO. LTD.

PETERBOROUGH, Ont. Canada.

SEND FOR CATALOGUE!



For IRON FENCING, BANK and OFFICE RAILINGS and all kinds of IRONWORK

Address:
Toronto Fence & Ornamental Iron Works
73 Adelaide St. West, Toronto.

BROWN & CO.

Manufacturers of Square and Hexagon

HOT PRESSED NUTS.

PARIS, - ONT.

Paris Electro Plating Co.
PARIS STATION, ONT.

Manufacturers of Stove and Piano Trimmings and Novelties

Fine Grey Iron Castings a Specialty.
Nickel, Copper and Brass Electro Plating.
WRITE FOR PRICES.

FIRSTBROOK BROS.

Dovetail and Packing Boxes

Top-Pins, Side Blocks and Cross Arms, Wood Printers, Etc.

Cigar Boxes, Shipping Cases.

TORONTO, ONTARIO
Write for Prices.

PROGRESSIVE MANUFACTURERS

USE THE

BLACKWELL UP-TO-DATE VARNISHES

For Finishing Pianos, Carriages, and Railway Coaches.

BLACKWELL & CO., TORONTO

SPORTSMEN

The ABBEY IMPROVED CHILLED SHOT
NEWCASTLE-ON-TYNE, ENGLAND

Is made by a New Process, and is highly spoken of by sporting papers and sportsmen.

Kills at greater distance than soft shot.

Send to 317 Gunpowder for Sample.

A. KLIPSTEIN & Co.,

122 Pearl Street, New York.

Anilines, Dyestuffs
—and—
Chemicals

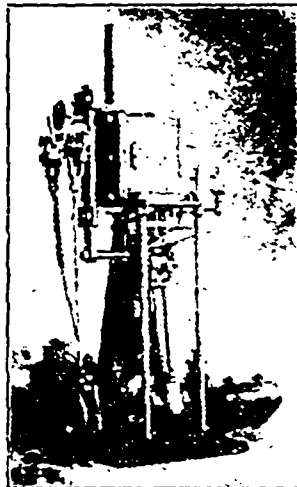
DELIVERY MADE AT NEW YORK, MONTREAL OR HAMILTON.

WRIGHT & DALLYN

AGENTS,
Hamilton, Ont.

ALBERT BELL ENGINE WORKS

DUNNVILLE, ONT. Makers of YACHT ENGINES, 1 H.P. to 50 H.P. Safety Water Tube BOILERS PROPELLER WHEELS Stationary Engines and Boilers



WRITE FOR CIRCULARS

When writing to Advertisers kindly mention THE CANADIAN MANUFACTURER.