

PLEASANT HOURS

A PAPER FOR OUR YOUNG FOLK.

Vol. XVII.]

TORONTO, AUGUST 7, 1897.

[No. 32.

The King of Lapland.

I know a tiny monarch who
has taken his command
Within a quiet region, where
a faithful little band
Of people do his bidding, or
yield him homage true,
And watch his faintest ges-
ture, as old vassals used
to do.

His territory's bordered by
two encircling arms,
And keeping in their shelter,
he is safe from all
alarms;
This land is sometimes
"rocky" if he feels in-
clined for jest,
Or lies at peace, a quiet
plain, when he would
stay at rest.

One mountain rises north-
ward, and is known as
Mother's Brow,
While east and west are
twin-grey lakes, reflect-
ing, I avow,
The prettiest bit of nature
that a human heart can
see,
Whene'er the little monarch
is alert for jubilee.

But when he's feeling weary
from the riding out in
state,

Or bowing to his subjects
and serfs importunate,
Retiring to the castle, his regal head
our king

Lays down in princely grandeur, while
loving minstrels sing.

If you would find his royal seat, you
need not sail the sea,
For—strange enough—his throne is set
in this home of the free,
Just find the nearest nursery, and bow
to the command
Of the loving little monarch, who is King
of all Lapland.



IN THE MARKET-PLACE, NEUCHÂTEL.

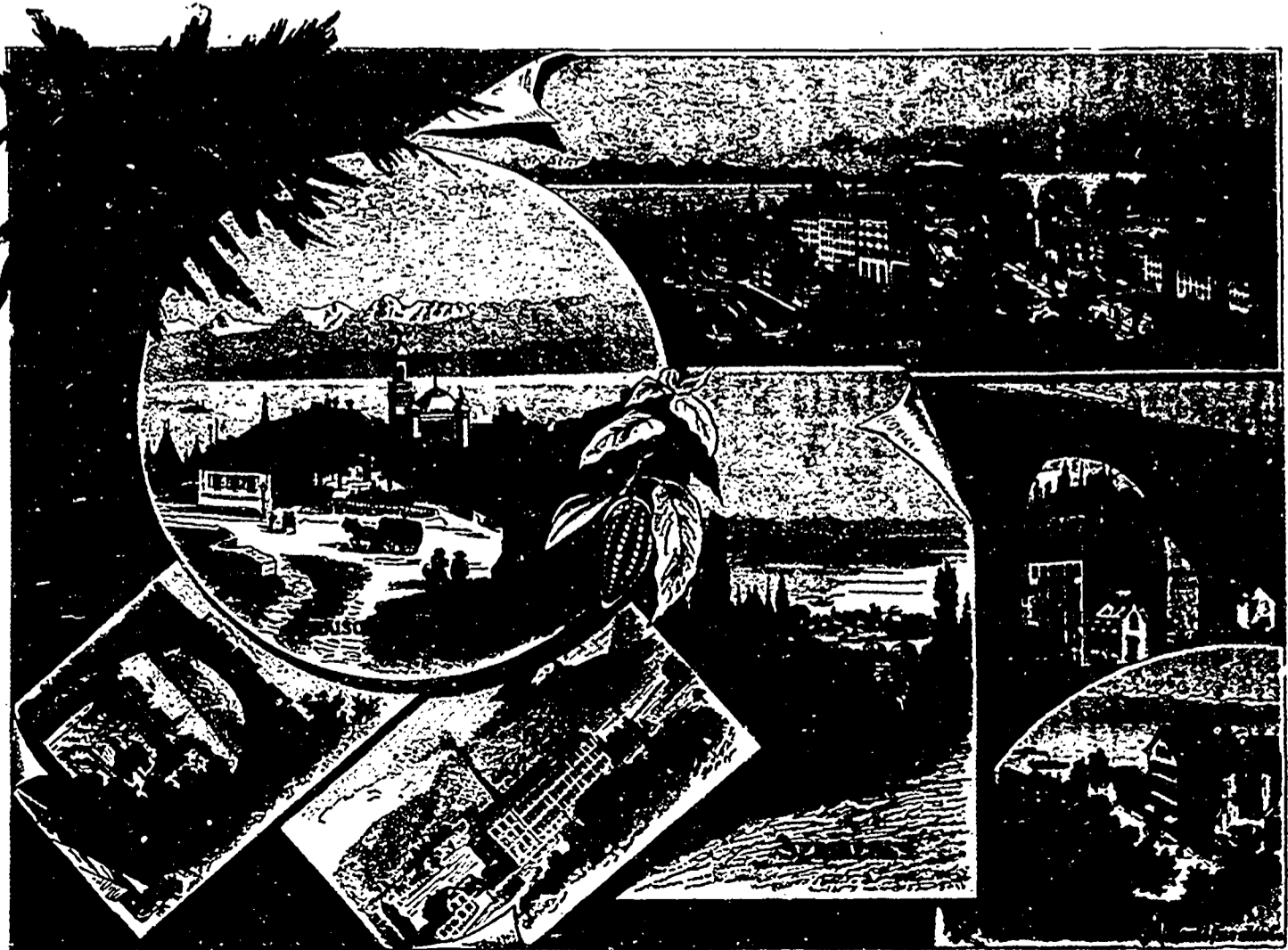
A FAMOUS CANDY FACTORY.

BY A. BLACKWOOD.

Between Neuchâtel and the little vil-
lage of Boudry, near Neuchâtel, Switzer-
land, the railway traverses a lofty viaduct
which spans the picturesque Gorge
de Serrière. This ravine cannot even
be seen from a few yards on either side
of the viaduct, and the traveller ap-
proaching it by the road for the first
time will be surprised to see it suddenly
open up before him with yawning

mouth. Still greater will be his surprise
to see that it contains houses, factories,
and machinery of various sorts. But
we think what will surprise him most
of all, is the faint aroma of fresh choco-
late which fills the air. As he passes
over the bridge he conjures up visions
of the most delicious cup of hot choco-
late that a weary traveller ever partook
of. Many a time, in the summer
months, when hot and weary, while pass-
ing over this bridge has this same odour,
sometimes very strong and almost nour-
ishing, greeted our nostrils and made us

deplorable in every respect to be men-
tioned as a model for the superiority of
its products as well as for the altogether
modern perfection of its organization.
It gives employment to quite a little
world of work-people, who are well cared
for by the firm. There is material for
a thorough study of the social conditions
under which the workman lives, and
after a visit to Serrière the tourist will
carry away with him the impression that
the "Suchard" house have fairly realized
their original and significant device
"utile dulci."



VIEW OF THE CHOCOLATE FACTORIES.