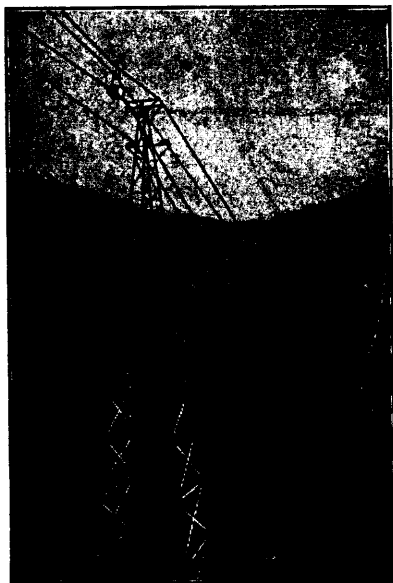


FRASER & CHALMERS

CHICAGO, ILL., U.S.A.

MANUFACTURERS OF



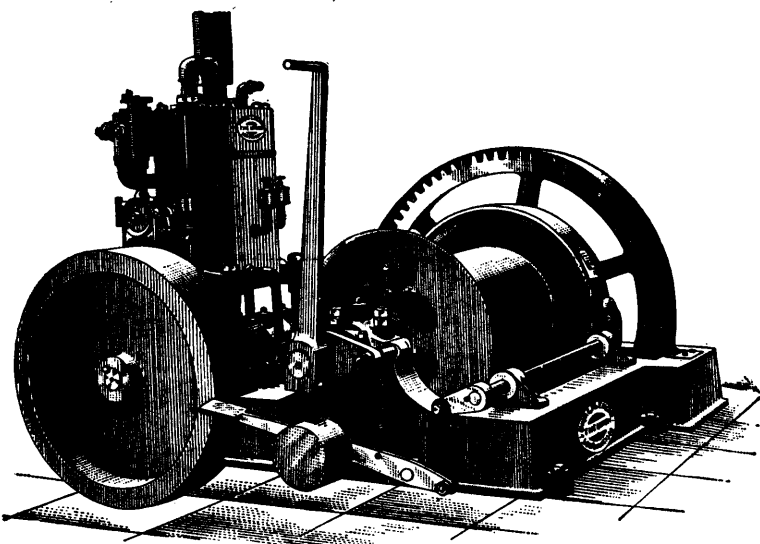
MINING MACHINERY
STAMP MILLS
SMELTERS, ENGINES
BOILERS
RIEDLER
AIR COMPRESSORS
and PUMPS
OTTO TRAMWAYS
a Specialty
PERFORATED METALS
RIVETED STEEL PIPE
Etc. Etc.

WRITE FOR PRICES AND PARTICULARS ON ANY CLASS OF MINING PLANT.

IT PAYS TO
ADVERTISE

IN THE **CANADIAN...**
MINING REVIEW

THE OLDEST AND ONLY OFFICIAL MINING PAPER IN CANADA

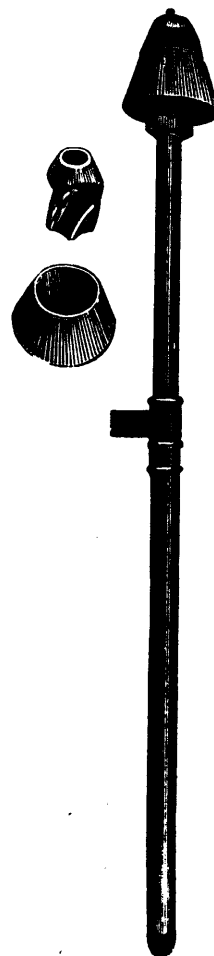
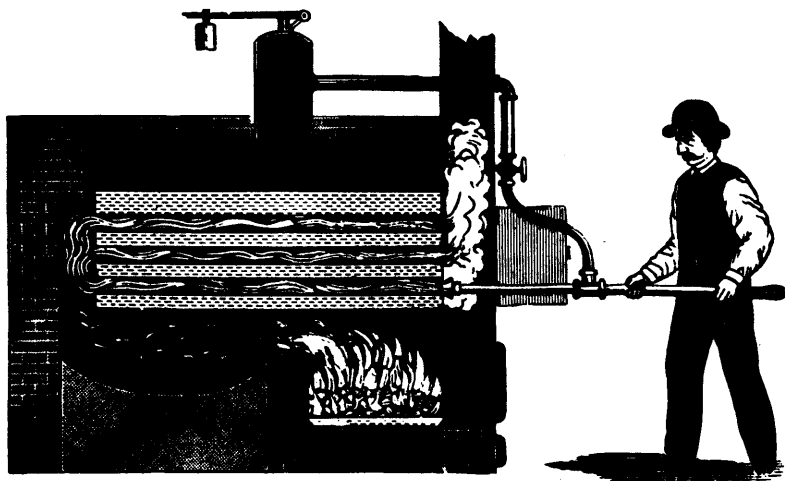
UNION GAS OR OIL ENGINE AND HOIST COMBINED ON STRONG IRON BASE**NO FIRE. NO STEAM. NO BOILER. NO DANGER.**

Ten years' experience. About two thousand Engines in use.
Started instantly. Compact, Strong, Simple, Efficient, Economical.
Perfectly governed, so that oil is used only in proportion to the work done.
No expense when idle.
Particularly adapted to Mining and Ship and Wharf use.
Built in sizes, 6 to 50 horse power.
Also builders of Marine and Stationary Gas and Naptha Engines.
Send for Catalogue and state horse power required.

UNION GAS ENGINE CO.

318 Howard St.

SAN FRANCISCO, CAL.

**STEAM TUBE CLEANER**

FIVE MINUTES TO THOROUGHLY CLEAN YOUR BOILER TUBES WITH THE
HAMILTON BRASS MFG. CO'S STEAM TUBE CLEANER

HAMILTON BRASS MANUFACTURING CO.

HAMILTON, ONT.