

LARGE PIPE FITTINGS.

Three special fittings of large size have just been made for the Crane Falls Power and Irrigation Company, of Caldwell, Idaho.

The three cast-iron bell-end fittings have a combined weight of 19,150 pounds, the larger one in the figure weighing 10,850 pounds, the smaller one 4,200 pounds, and the third 4,100 pounds.



View of Large Fitting.

The dimensions are, respectively: 5 feet with three 24-inch flanged outlets, 4 feet 4½ inches with two 24-inch flanged outlets, and 3 feet 10 inches with two 18-inch flanged outlets.

These are all discharge fittings for pumps and were ordered through the Portland branch of Crane Co. by Smith, Kerry & Chase, engineers for the power and irrigation company. The fittings connect at the bell-end to wood pipe and at the flanged ends to spiral steel pipe penstocks. The largest fitting will work under a static head of 159 feet, the next in size under a head of 89 feet, and the smallest under a head of 54 feet.

PERSONAL.

E. L. COUSINS, B.A.Sc., harbor engineer for the Toronto Harbor Commission, delivered an address to the Toronto branch of the Canadian Society of Civil Engineers on Thursday evening, November 28th, on the new plans for Toronto harbor. The meeting was very well attended, about one hundred and fifty being present.

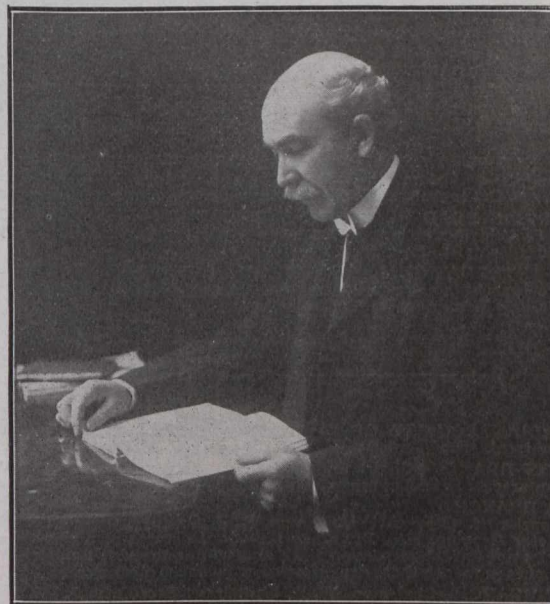
ARTHUR H. BLANCHARD, M. Can. Soc. C.E., professor of highway engineering in Columbia University, on November 25th delivered an address entitled "The Art and Science of Highway Engineering" at the celebration of Founders' Day at the Clarkson School of Technology.

STANLEY M. OBORN, who is in the main drainage department of the Department of Works, Toronto, has been elected an Assoc. M. Can. Soc. C.E. Mr. Oborn has had a varied experience in municipal engineering in England, and has been in Canada about six months.

JOSEPH OWEN, of London, England, has been appointed assistant to Mr. John Wilson, city engineer, of Fort William Ont.

JAMES WALKER, Assoc. M. Inst. C.E., M.I. Mech. E., we are informed, is about to join the staff of Messrs. Boving & Company, Limited, water power engineers, of 9½ Union Court, E.C., and will also join the board of directors. After a long and extensive experience with the contracting firm of Messrs. S. Pearson & Son, of Westminster, he was engaged by Messrs. J. G. White & Company, Limited, of 9 Cloak Lane, E.C., with whom he has been for the last nine years, acting as construction superintendent on large works abroad, and latterly as engineer in charge of construction in the head office in London. With his wide experience in hydro-electric undertakings and civil engineering work in general, he will undoubtedly be a great acquisition to the firm in its already large and rapidly increasing business. It will also interest our readers to learn that Mr. Reginald K. Morcom has also consented to act on the board of Messrs. Boving & Company.

VIRGIL G. BOGUE, a New York engineer, has been retained in a consulting capacity by the Canadian Pacific Railway in connection with double-tracking of the main line between Vancouver and Calgary.



Hon. Robert Rogers, Minister of Public Works.

MEETINGS.

Mr. C. C. Cariss, of E. Leonard & Sons, lectured on the "Clayton, Logarithmic Analysis of Cylinder Performance" before a large audience at London, Ont. Mr. Cariss showed how improved performance could be obtained from steam and other heat engines by improved methods of indicator diagram analysis.

OBITUARY.

JAMES M. SHANLEY, one of the best known civil engineers in Canada, died on November 28th, at Montreal. The deceased was born in Illinois 55 years ago, but came to Canada at an early age. He was educated at Galt Collegiate Institute and Toronto University. After graduating he started practising in Montreal. One of the first pieces of work done by the late Mr. Shanley was in connection with the Beauharnois Junction Railway, now a part of the New York Central's road into Montreal. He is survived by Mrs.