

A Pleasing Effect in the Gardens at Rideau Hall.

slipper (*Cypripedium spectabile*) in a distant bog. Neither heat nor mosquitoes daunted her, but pulling on a pair of rubber boots she entered the swamp and saw these lovely flowers in great abundance.

THE GARDEN AT RIDEAU HALL

A little has been said of Lady Grey's influence on horticulture in Canada, and of her knowledge and love of flowers. It remains to record some of the things she accomplished at Government House itself. When she came to Ottawa the conservatories at Rideau Hall were small and comparatively uninteresting, but through her influence a fine range of houses was built in which are grown practically all the cut flowers used at Rideau Hall, and many other ornamental plants. One of the illustrations shows a section of these.

There had been little done to make a good herbaceous border at Government House. Lady Grey took it in hand and after several years hard work she had the satisfaction this year of knowing that her work had not been in vain. In the past the plants suffered during dry weather, but she had the border subirrigated by means of tiles, which has been very effective in keeping the soil moist and the plants have made much more satisfactory growth since. Two years ago she planted grape vines between the two borders and made a pergola or archway of the vines. The illustration on the front cover shows how effective this is.

Many fine herbaceous perennials are now planted in this border, which will long bear the impress of Lady Grey. Much effective planting has been done in recent years on another border, the one with the palm house in the rear, and the smaller borders about the con-

servatories. The Hall itself has received more attention than ever before. It will be seen from the illustration that climbers have not been neglected.

THE PUBLIC WELCOME

One of the most satisfactory and pleasing bits of planting which Lady Grey planned was the planting of thousands of bulbs of narcissi and tulips, in the grass along the roadside and in the park belonging to Government House. Everyone was welcome to walk in and see these charming flowers when they were

in bloom in the spring. The great masses of them everywhere in abundance, their striking contrasts of color and their setting among the trees, was a delightful picture. The planting of bulbs was, however, not confined to Government House grounds for in Rockcliffe Park, near by, many children helped to plant the bulbs of tulips and narcissi, which for several seasons have been a striking feature of the park in spring.

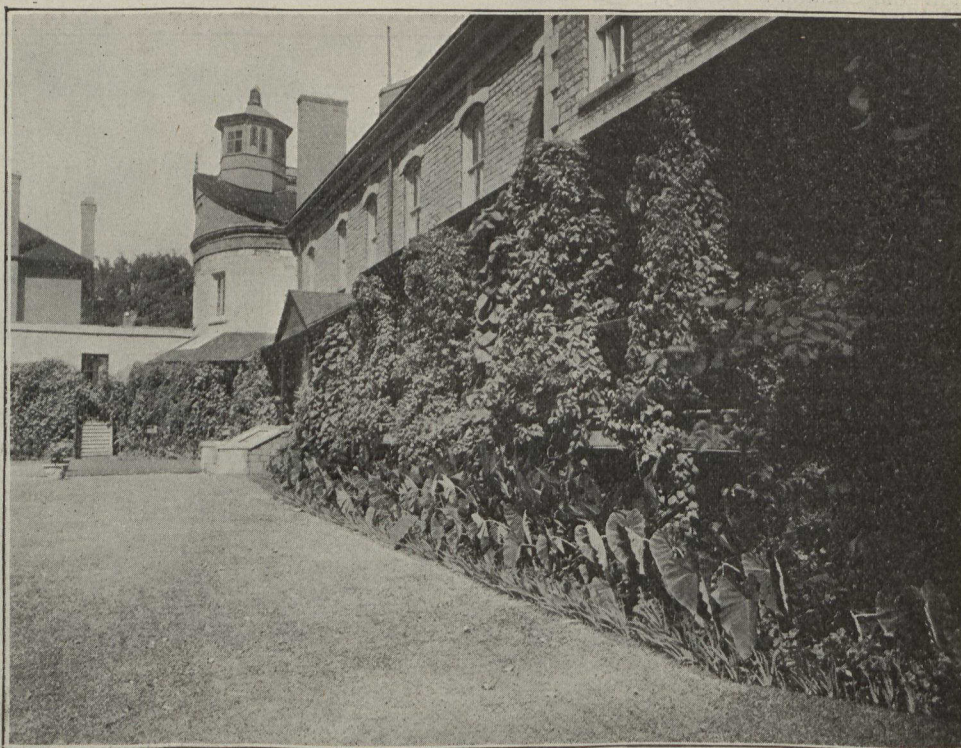
The last improvement which Lady Grey effected at Government House before she went away was the removal of an arbor-vitæ hedge which restricted the view on the west side of the grounds and hid the trunks of a fine row of hard maples, spoiling the effect. With the removal of the hedge there is a more extensive view and when the planting which was planned is completed there will be a pleasing vista with white pines in the distance. When the hedge was removed a terrace or parapet was made with steps leading down to the level of the maples, which is also a marked improvement.

The results of Lady Grey's work on the Government House grounds and gardens will be that those who follow her will endeavor to maintain the standard she has set and possibly cause still further improvements to be made.

The Care of Sword Ferns

A. V. Main, Ottawa

When ferns display a tinge of yellow it may be due to several errors of management. The most likely one is that the soil has been allowed to get into a sodden, pulpy mass. Lack of drainage at the bottom of the pot, and the presence of



The Planting of Climbers was Encouraged by Lady Grey.